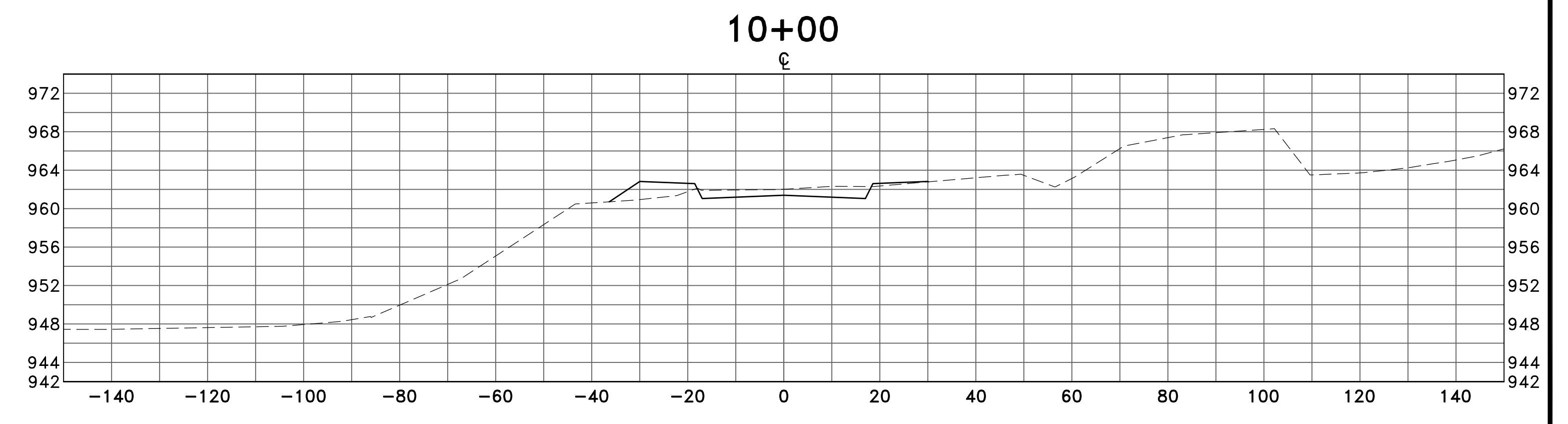
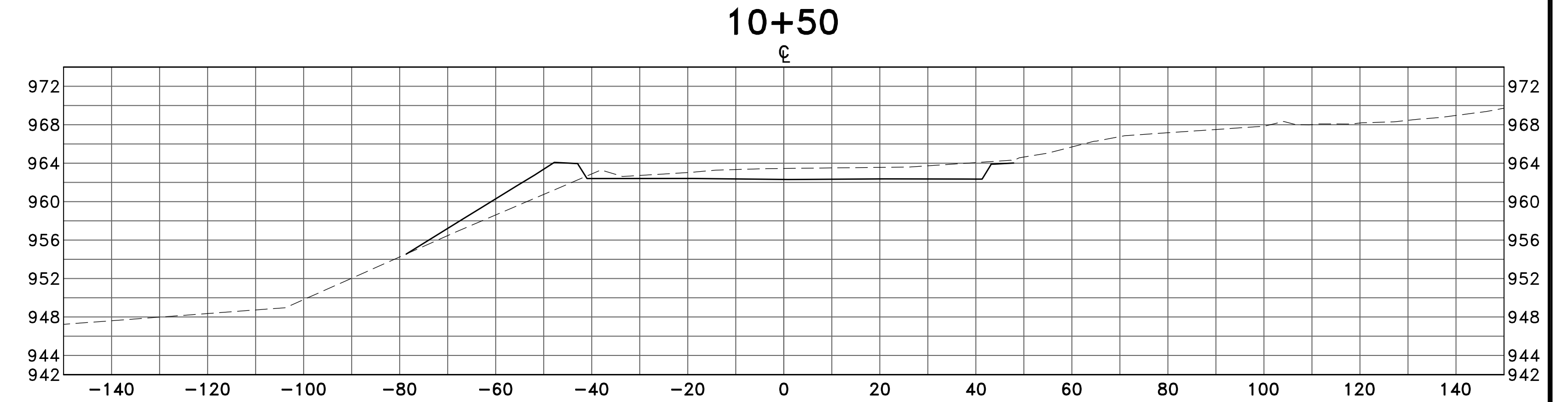
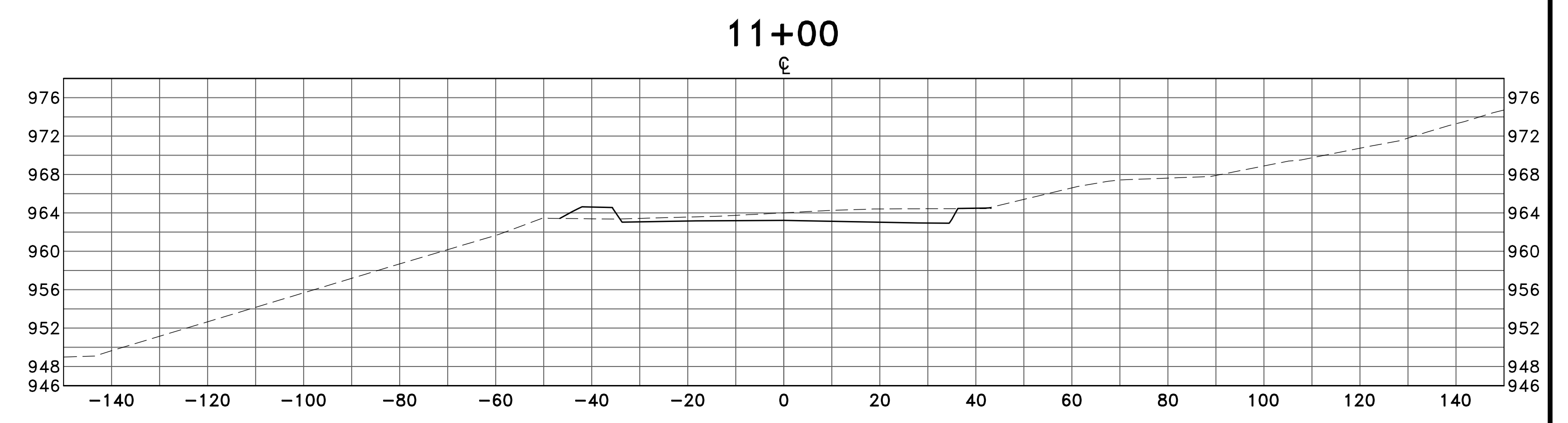
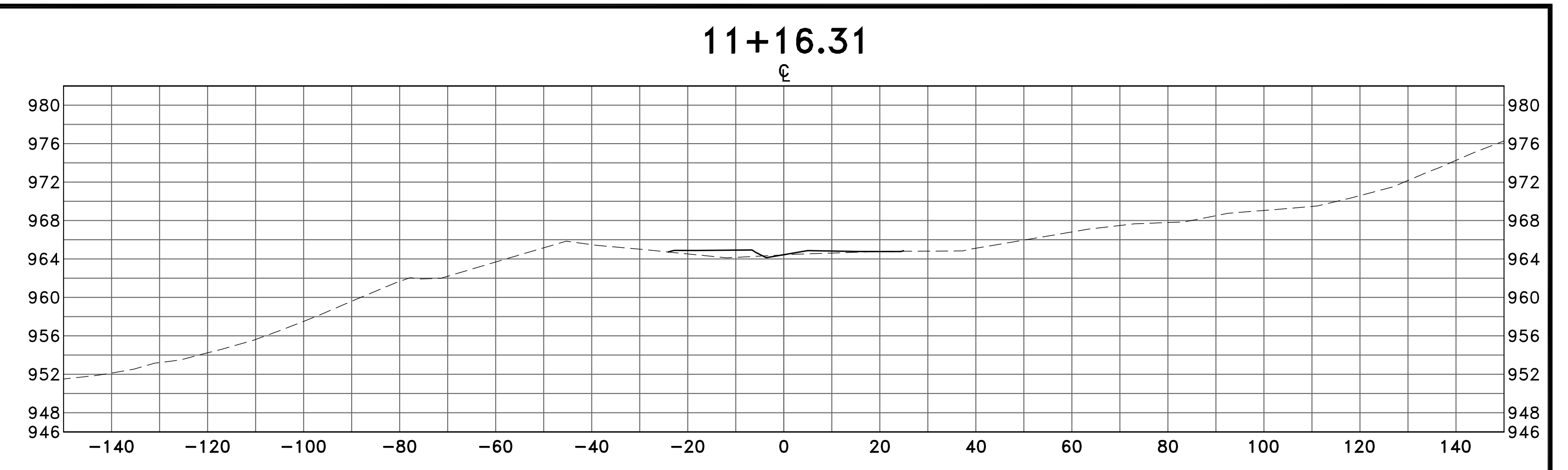
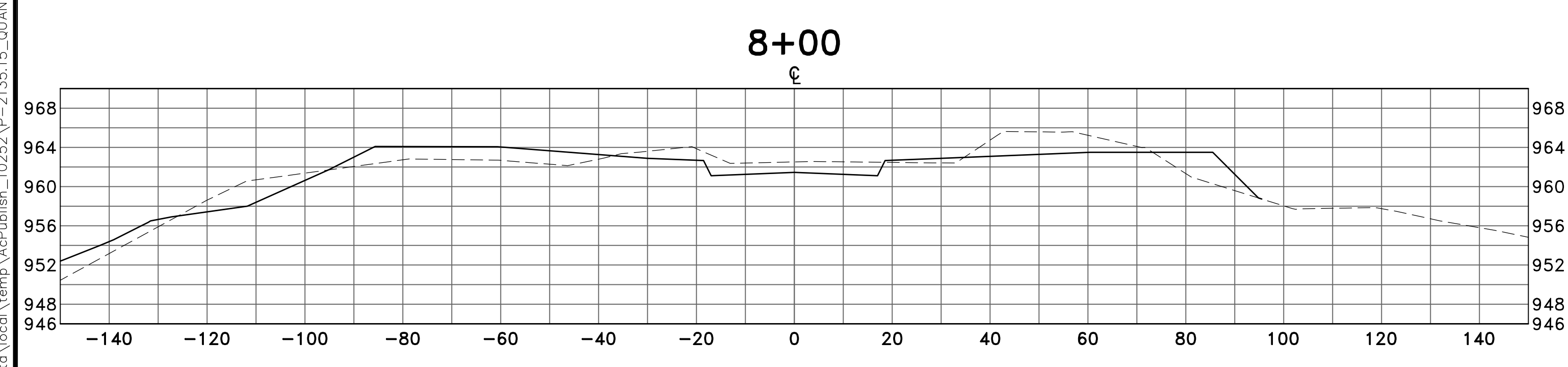
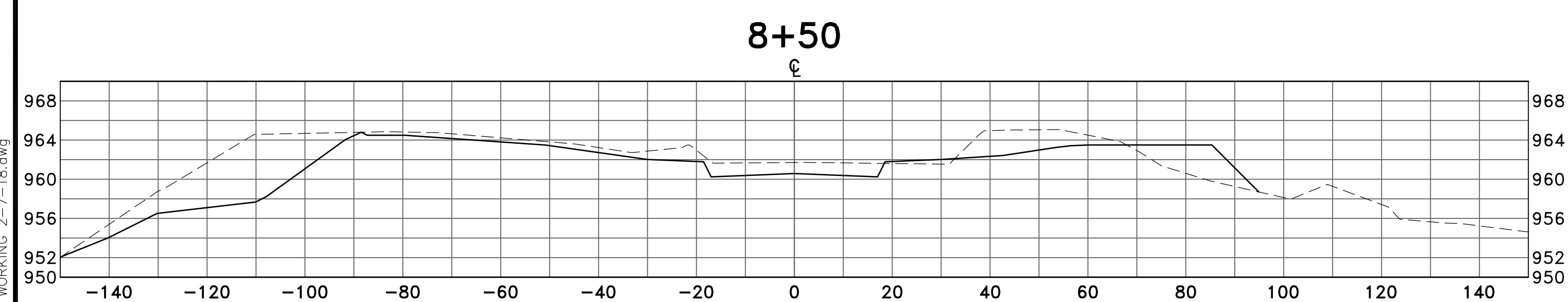
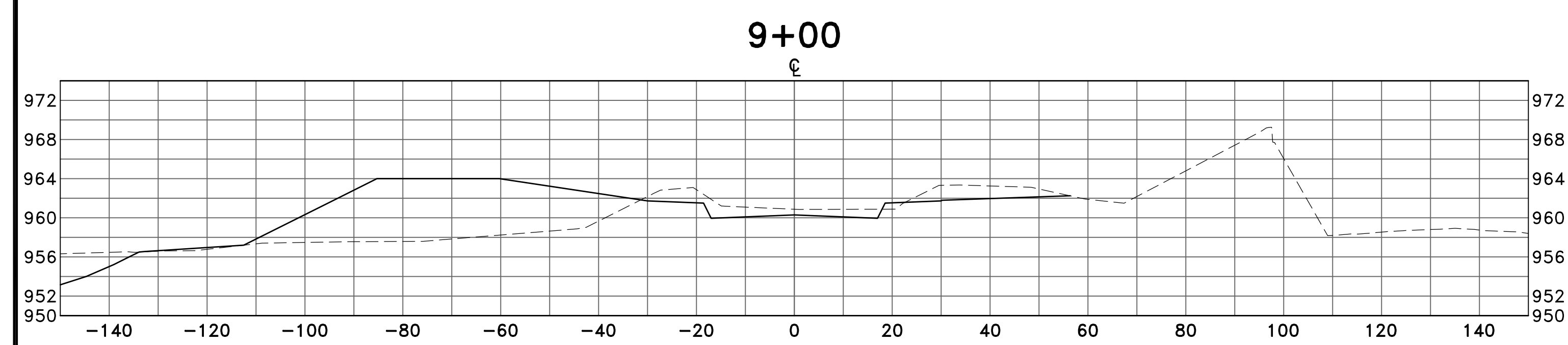
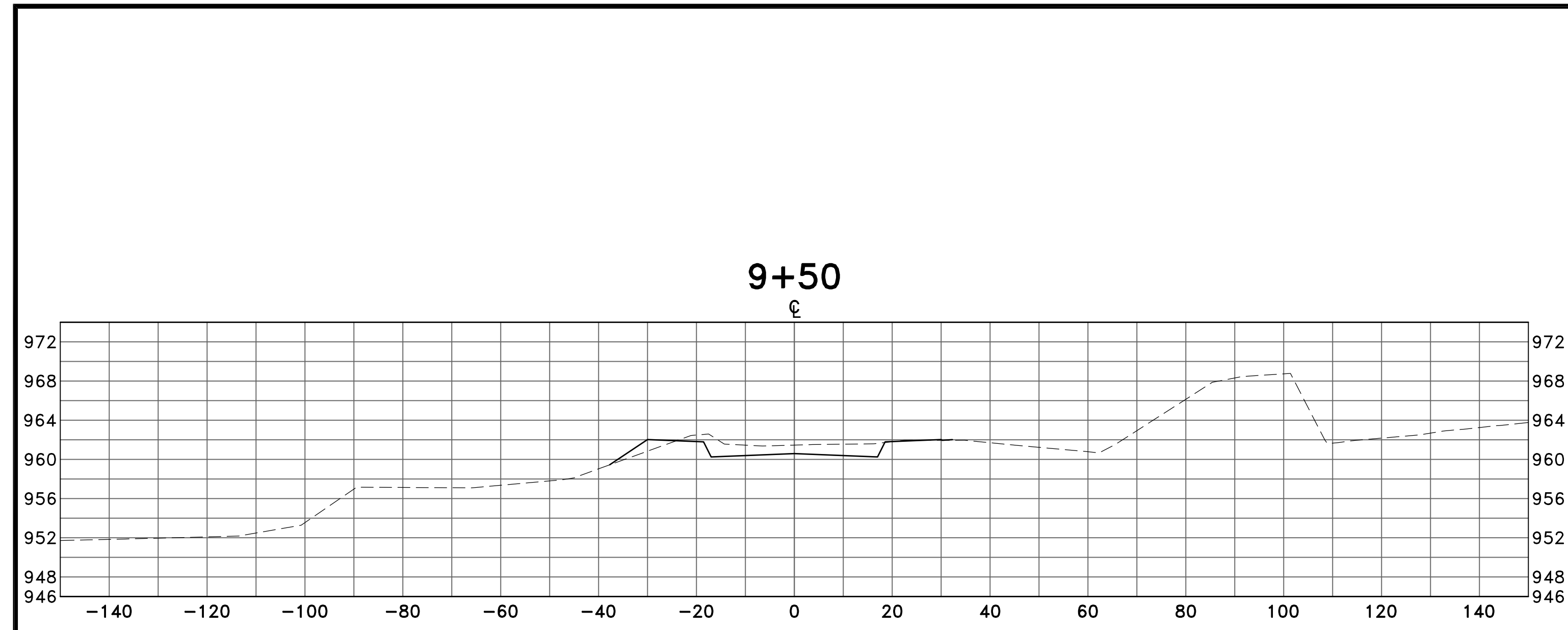
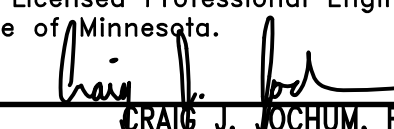


May 09, 2018 - 8:09am
 C:\Users\michael\AppData\Local\Temp\AcPublish_10252\P-2135.15_QUANTITIES WORKING 2-7-18.dwg



DATE	REVISION

I hereby certify that this plan, specification, or report was prepared by me or under my direct supervision and that I am a duly Licensed Professional Engineer under the laws of the State of Minnesota.

CRAIG J. JOCHUM, PE
 Date 7/31/17 Lic. No. 23461

DESIGNED BY: CJJ
 DRAWN BY: MSS
 CHECKED BY: TAE



HILLSIDE ESTATES ELEVENTH ADDITION

CROSS SECTIONS
195TH AVENUE NW
CITY OF ELK RIVER, MINNESOTA

SHEET **X2** OF **X5** SHEETS