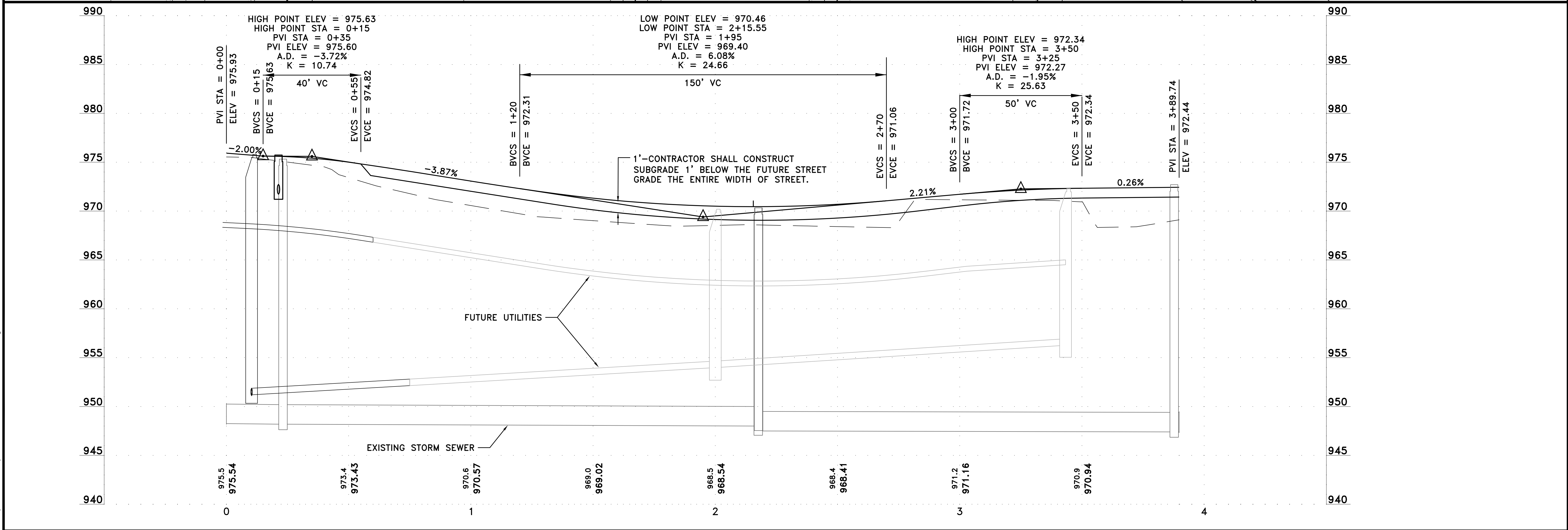


LEGEND

- | — WATERMAIN
- > — SANITARY SEWER
- >> — STORM SEWER



DATE	REVISION
11/28/17	PLAN REVISIONS PER CITY REVIEW
2/9/18	PLAN REVISIONS
3/8/18	ADD FUTURE PIPE
3/19/18	PLAN REVISIONS
4/6/18	PLAN REVISIONS

I hereby certify that this plan, specification, or report was prepared by me or under my direct supervision and that I am a duly Licensed Professional Engineer under the laws of the State of Minnesota.

Paul J. Jochum, PE
 Date 7/31/17 Lic. No. 23461

DESIGNED BY: CJJ
 DRAWN BY: MSS
 CHECKED BY: TAE

RUM RIVER
 LAND SURVEYORS & ENGINEERS
 PO Box 1044
 Princeton, MN 55371
 Telephone: (763) 389-4476
 Fax: (763) 631-0376

HILLSIDE ESTATES ELEVENTH ADDITION

FUTURE STREET PROFILE
 CARSON COURT
 CITY OF ELK RIVER, MINNESOTA

SHEET 22 OF 22 SHEETS

Apr 09, 2018 9:32am K:\PRIVATE\213515\ENGINEERING\2135.15_PP_CARLSON ROAD.dwg