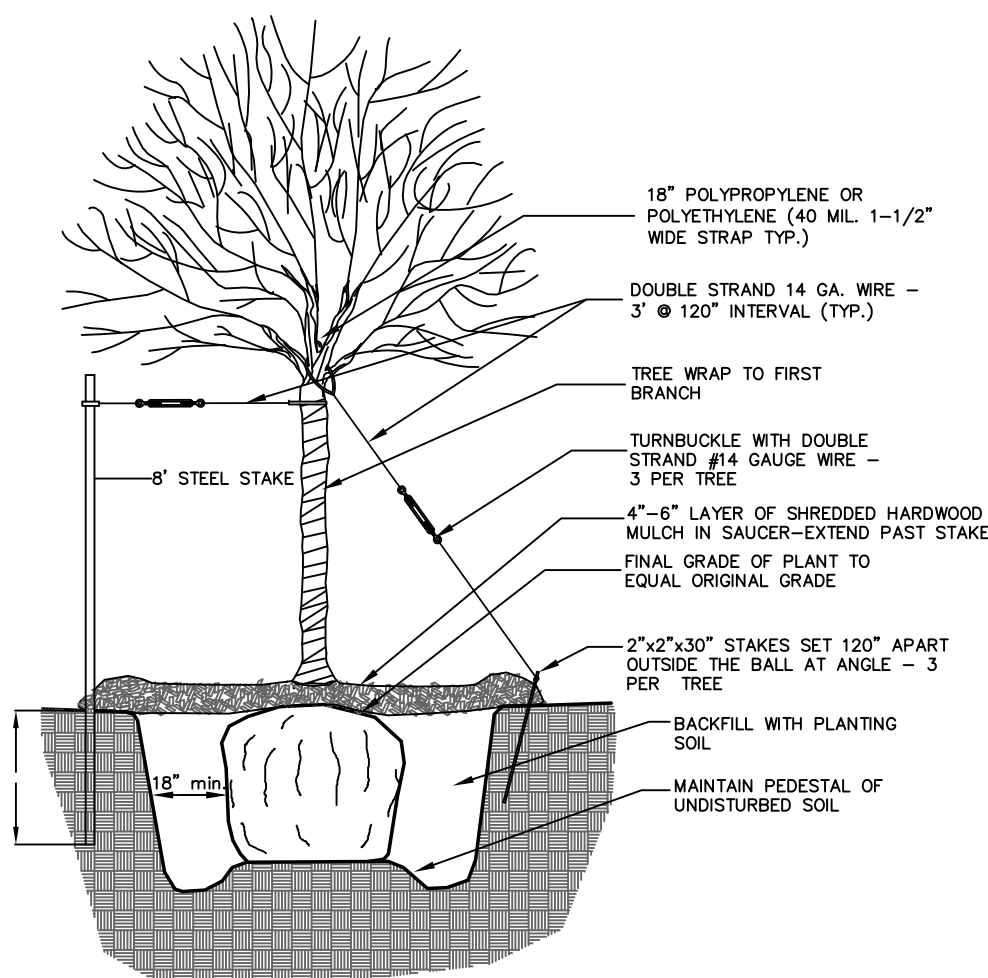


**GENERAL NOTES:**

1. THE DEVELOPER WILL ARRANGE TO HAVE TREES PLANTED IN THE APPROXIMATE LOCATIONS AS SHOWN. TO PREVENT DAMAGE TREES WILL BE PLANTED ON EACH LOT AS THE HOMES ARE CONSTRUCTED.

**LEGEND**

- SILT FENCE SEE SHEET 3
- PROPOSED TREE LOCATION - SEE DETAIL THIS SHEET
- PRESERVE TREE AREA



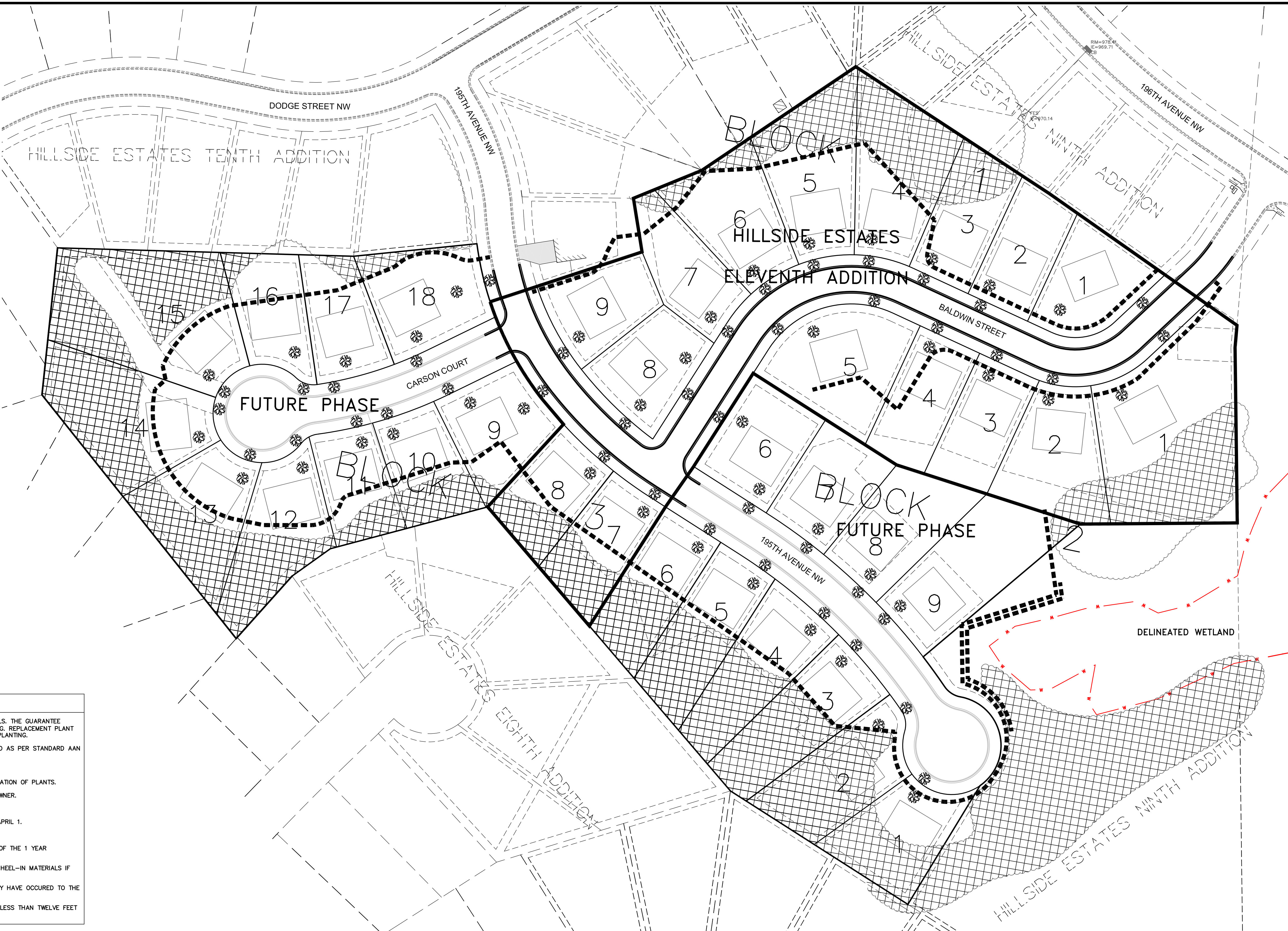
- 18" POLYPROPYLENE OR POLYETHYLENE (40 MIL. 1-1/2" WIDE STRAP TYP.)
- DOUBLE STRAND 14 GA. WIRE - 3' @ 120" INTERVAL (TYP.)
- TREE WRAP TO FIRST BRANCH
- TURNBUCKLE WITH DOUBLE STRAND #14 GAUGE WIRE - 3 PER TREE
- 4"-6" LAYER OF SHREDDED HARDWOOD MULCH IN SAUCER-EXTEND PAST STAKE
- FINAL GRADE OF PLANT TO EQUAL ORIGINAL GRADE
- 2"x2"x30" STAKES SET 120" APART OUTSIDE THE BALL AT ANGLE - 3 PER TREE
- BACKFILL WITH PLANTING SOIL
- MAINTAIN PEDESTAL OF UNDISTURBED SOIL

NOTES:  
TWO ALTERNATE METHODS OF TREE STAKING ARE SHOWN.  
IT IS THE CONTRACTOR'S OPTION TO STAKE TREES; HOWEVER, THE CONTRACTOR IS RESPONSIBLE FOR THE MAINTAINING TREES IN A PLUMB POSITION THROUGHOUT THE GUARANTEE PERIOD.  
SCARIFY BOTTOM AND SIDES OF HOLE PRIOR TO PLANTING.

DECIDUOUS TREE PLANTING DETAIL

**PLANTING NOTES:**

1. CONTRACTOR SHALL PROVIDE ONE YEAR GUARANTEE OF ALL PLANT MATERIALS. THE GUARANTEE BEGINS ON THE DATE OF THE OWNER'S ACCEPTANCE OF THE INITIAL PLANTING. REPLACEMENT PLANT MATERIALS SHALL ALSO HAVE A ONE YEAR GUARANTEE COMMENCING UPON PLANTING.
2. ALL PLANTS TO BE NORTHERN-GROWN AND HARDY. PLANTS TO BE INSTALLED AS PER STANDARD AAN PLANTING PRACTICES.
3. USE MINIMUM 12" LOAM PLANTING SOIL ON TREES.
4. CONTRACTOR SHALL VERIFY LOCATIONS WITH ALL UTILITIES PRIOR TO INSTALLATION OF PLANTS.
5. CONTRACTOR SHALL WATER ALL NEW PLANTS UNTIL ACCEPTED BY THE OWNER.
6. STAKING OF TREES OPTIONAL; REPOSITION IF NOT PLUMB AFTER ONE YEAR.
7. WRAP ALL SMOOTH-BARKED TREES-FASTEN TOP AND BOTTOM. REMOVE BY APRIL 1.
8. PRUNE PLANTS AS NECESSARY - PER STANDARD NURSERY PRACTICE.
9. HOME OWNER SHALL BE RESPONSIBLE FOR MAINTENANCE AFTER EXPIRATION OF THE 1 YEAR WARRANTY.
10. PLANTS SHALL BE IMMEDIATELY PLANTED UPON ARRIVAL AT SITE. PROPERLY HEEL-IN MATERIALS IF NECESSARY.
11. FIELD ADJUST TREES TO FIT UTILITY LOCATIONS AND ANY CHANGES THAT MAY HAVE OCCURED TO THE GRADING PLAN.
12. BOULEVARD TREES SHALL BE PLANTED A DISTANCE AT LEAST SIX FEET BUT LESS THAN TWELVE FEET FROM BEHIND THE CURB.



May 10, 2018 9:48am K:\PRIVATE\2135.15\ENGINEERING\2135.15\_PLANTING.dwg

DATE	REVISION
11/28/17	PLAN REVISIONS PER CITY REVIEW
2/9/18	PLAN REVISIONS
4/6/18	PLAN REVISIONS
5/7/18	PLAN REVISIONS PER CITY REVIEW

I hereby certify that this plan, specification, or report was prepared by me or under my direct supervision and that I am a duly Licensed Professional Engineer under the laws of the State of Minnesota.

*Craig J. Ochum*  
**Craig J. Ochum, PE**  
 Lic. No. 23461

DESIGNED BY: CJJ  
 DRAWN BY: MSS  
 CHECKED BY: TAE

**RUM RIVER**  
 LAND SURVEYORS & ENGINEERS  
 PO Box 1044 Princeton, MN 55371  
 Telephone: (763) 389-4476 Fax: (763) 631-0376

HILLSIDE ESTATES ELEVENTH ADDITION

TREE PRESERVATION AND PLANTING PLAN  
 CITY OF ELK RIVER, MINNESOTA

SHEET 20 OF 22 SHEETS