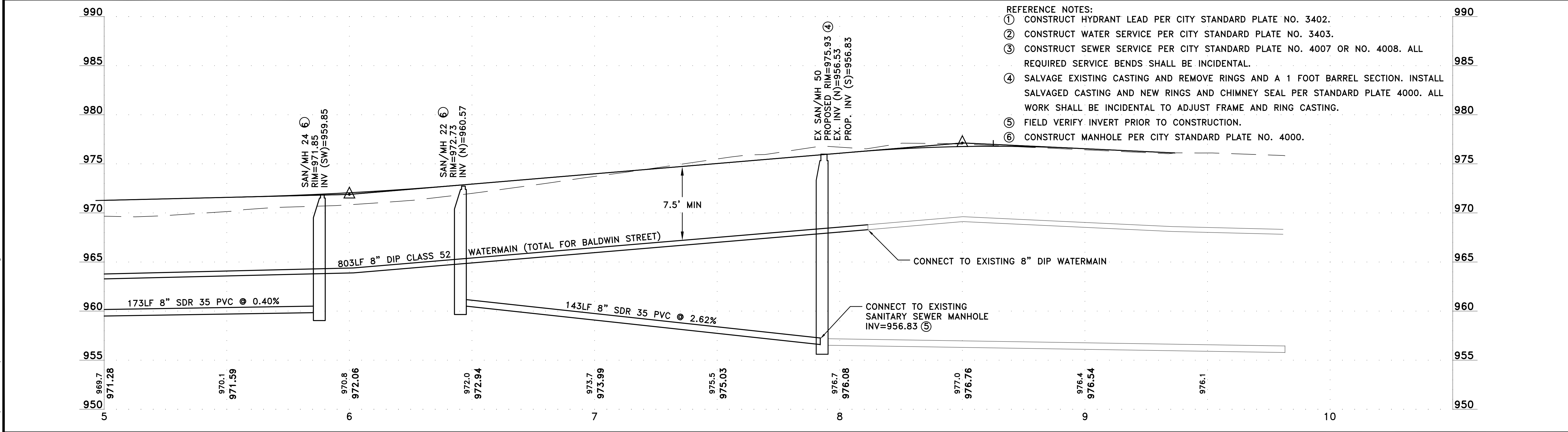
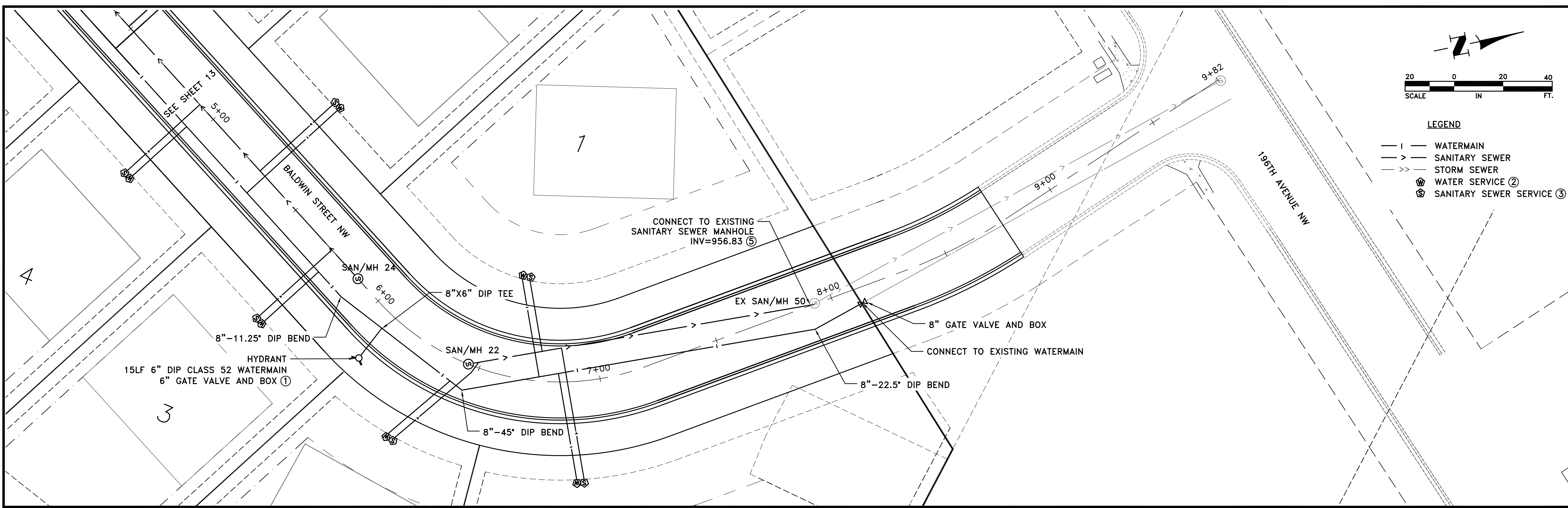


LEGEND

— —	WATERMAIN
—>—	SANITARY SEWER
—>>—	STORM SEWER
⊕	WATER SERVICE ②
⊕	SANITARY SEWER SERVICE ③



- REFERENCE NOTES:**
- ① CONSTRUCT HYDRANT LEAD PER CITY STANDARD PLATE NO. 3402.
 - ② CONSTRUCT WATER SERVICE PER CITY STANDARD PLATE NO. 3403.
 - ③ CONSTRUCT SEWER SERVICE PER CITY STANDARD PLATE NO. 4007 OR NO. 4008. ALL REQUIRED SERVICE BENDS SHALL BE INCIDENTAL.
 - ④ SALVAGE EXISTING CASTING AND REMOVE RINGS AND A 1 FOOT BARREL SECTION. INSTALL SALVAGED CASTING AND NEW RINGS AND CHIMNEY SEAL PER STANDARD PLATE 4000. ALL WORK SHALL BE INCIDENTAL TO ADJUST FRAME AND RING CASTING.
 - ⑤ FIELD VERIFY INVERT PRIOR TO CONSTRUCTION.
 - ⑥ CONSTRUCT MANHOLE PER CITY STANDARD PLATE NO. 4000.

Mar 19, 2018 - 11:36am K:\PRIVATE\213515\ENGINEERING\213515_PP_BALDWIN.dwg

DATE	REVISION
11/28/17	PLAN REVISIONS PER CITY REVIEW
2/9/18	PLAN REVISIONS

I hereby certify that this plan, specification, or report was prepared by me or under my direct supervision and that I am a duly Licensed Professional Engineer under the laws of the State of Minnesota.

Travis J. Jochum
TRAVIS J. JOCHUM, PE
 Date 7/31/17 Lic. No. 23461

DESIGNED BY: CJJ
DRAWN BY: MSS
CHECKED BY: TAE

RUM RIVER
 LAND SURVEYORS & ENGINEERS
 PO Box 1044 Princeton, MN 55371 Telephone: (763) 389-4476 Fax: (763) 631-0376

HILLSIDE ESTATES ELEVENTH ADDITION

SANITARY SEWER AND WATERMAIN
 BALDWIN STREET NW
 CITY OF ELK RIVER, MINNESOTA

SHEET	14
OF	22
SHEETS	