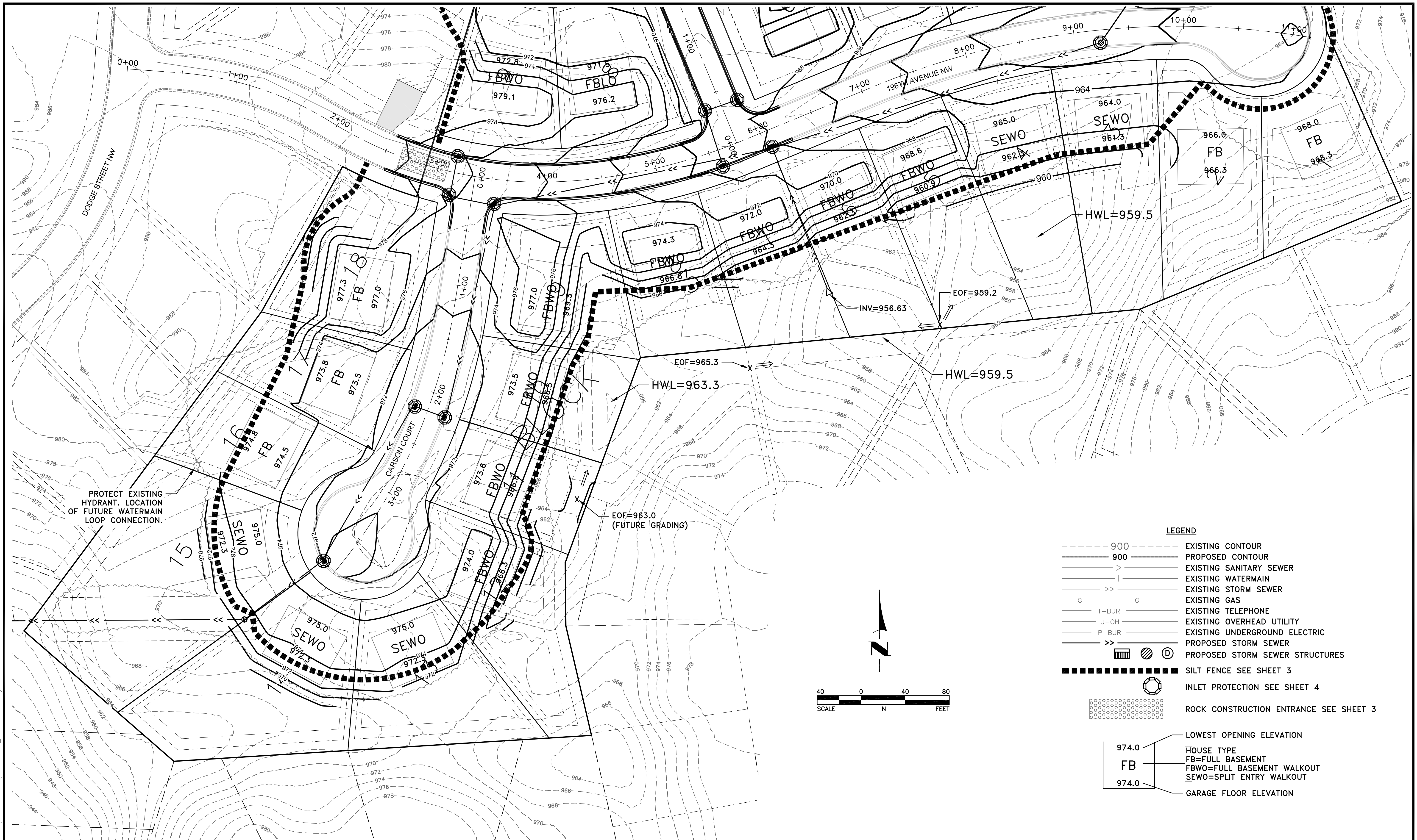
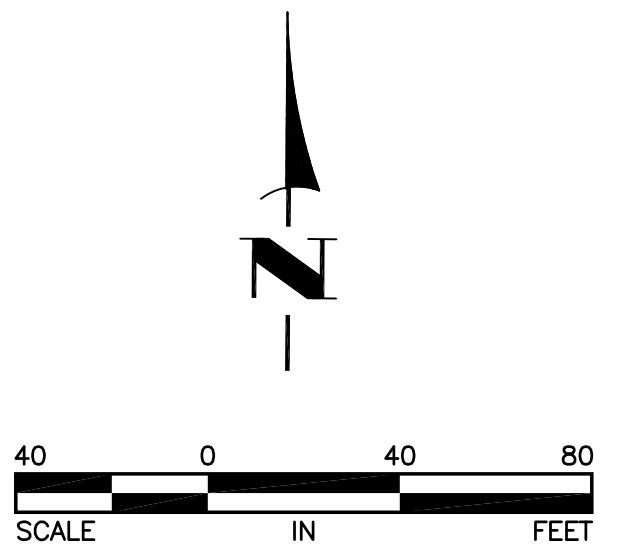


May 10, 2018 - 11:32am
 K:\PRIVATE\213515\ENGINEERING\213515_GRADING_2.dwg



LEGEND

- 900 --- EXISTING CONTOUR
- 900 — PROPOSED CONTOUR
- S — EXISTING SANITARY SEWER
- W — EXISTING WATERMAIN
- SS — EXISTING STORM SEWER
- G — EXISTING GAS
- T-BUR — EXISTING TELEPHONE
- U-OH — EXISTING OVERHEAD UTILITY
- P-BUR — EXISTING UNDERGROUND ELECTRIC
- - - - - PROPOSED STORM SEWER
- ⊙ PROPOSED STORM SEWER STRUCTURES
- — — — — SILT FENCE SEE SHEET 3
- ⊙ INLET PROTECTION SEE SHEET 4
- ⊙ ROCK CONSTRUCTION ENTRANCE SEE SHEET 3
- 974.0 — LOWEST OPENING ELEVATION
- FB — HOUSE TYPE
- FBWO — FULL BASEMENT WALKOUT
- SEWO — SPLIT ENTRY WALKOUT
- 974.0 — GARAGE FLOOR ELEVATION



DATE	REVISION
11/28/17	PLAN REVISIONS PER CITY REVIEW
2/9/18	PLAN REVISIONS
3/8/18	REVISE HOUSE PAD ELEVATIONS
3/19/18	PLAN REVISIONS
4/6/18	PLAN REVISIONS
5/7/18	PLAN REVISIONS PER CITY REVIEW

I hereby certify that this plan, specification, or report was prepared by me or under my direct supervision and that I am a duly Licensed Professional Engineer under the laws of the State of Minnesota.

CRAIG J. JOCHUM, PE
 Lic. No. 23461

Date 7/31/17

DESIGNED BY: CJJ
 DRAWN BY: MSS
 CHECKED BY: TAE

RUM RIVER
 LAND SURVEYORS & ENGINEERS
PO Box 1044 Telephone: (763) 389-4476
 Princeton, MN 55371 Fax: (763) 631-0376

HILLSIDE ESTATES ELEVENTH ADDITION

SOUTH HALF GRADING, DRAINAGE
 AND EROSION CONTROL PLAN
 CITY OF ELK RIVER, MINNESOTA

SHEET 10 OF 22 SHEETS
 P-2135.15