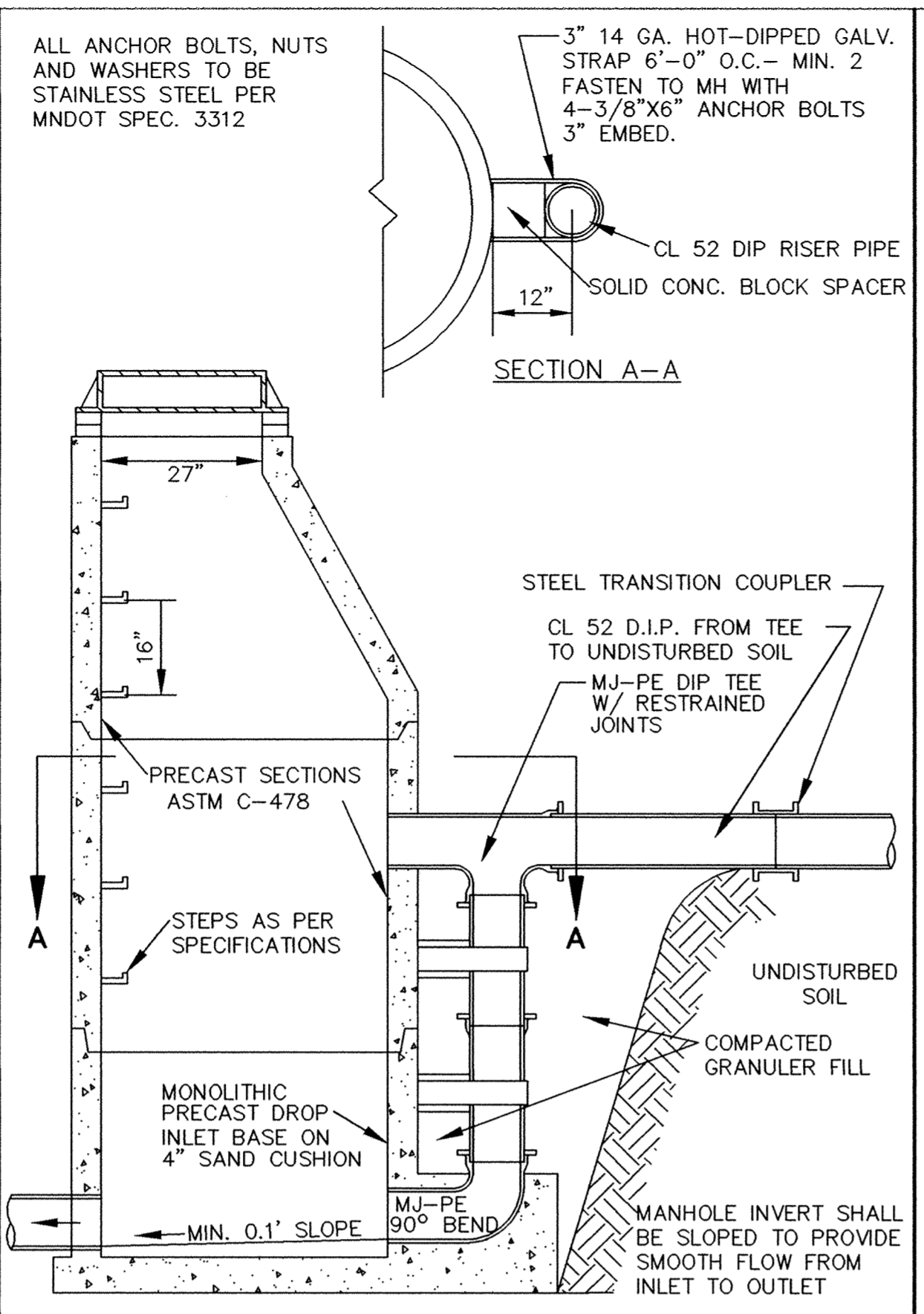
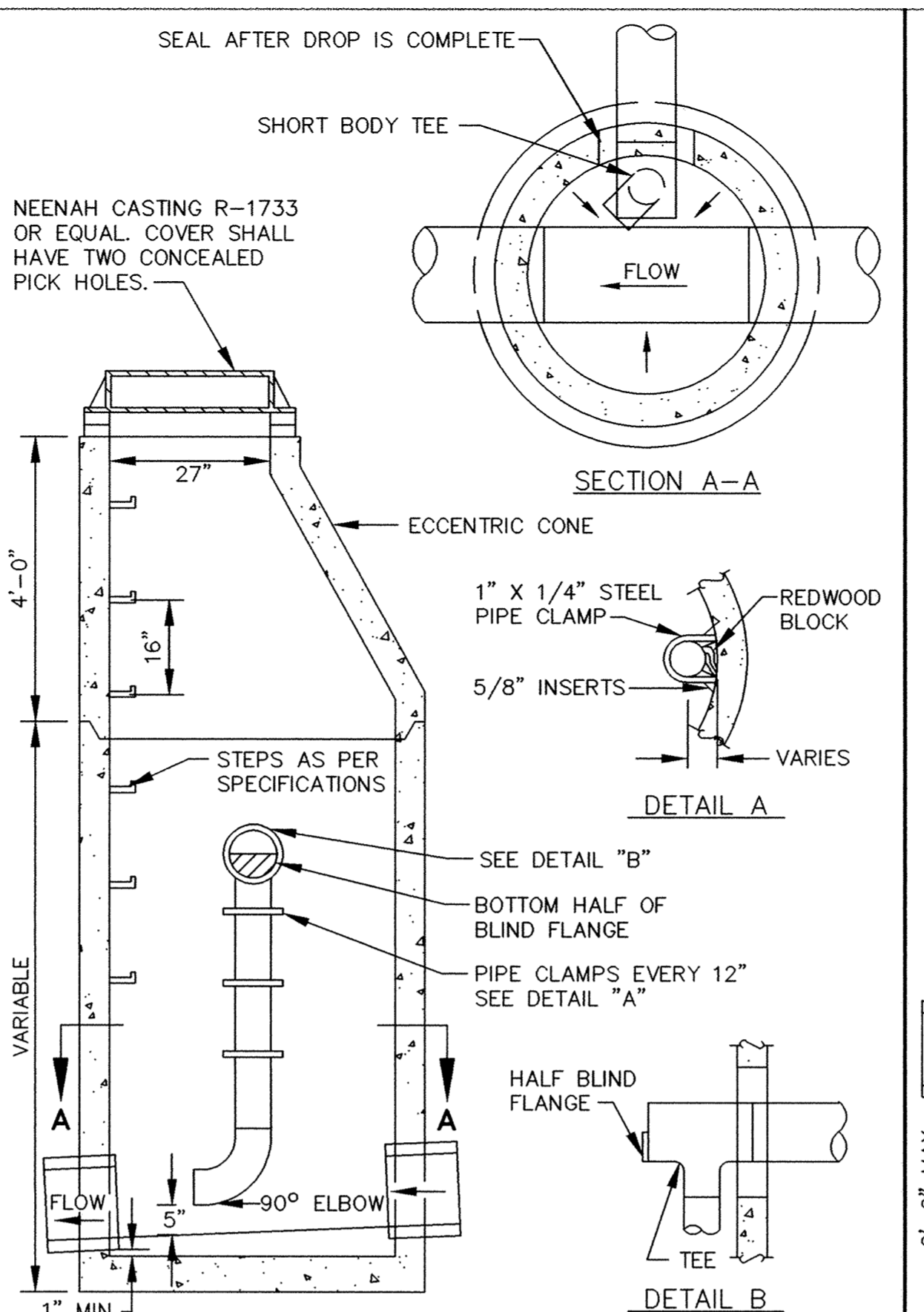


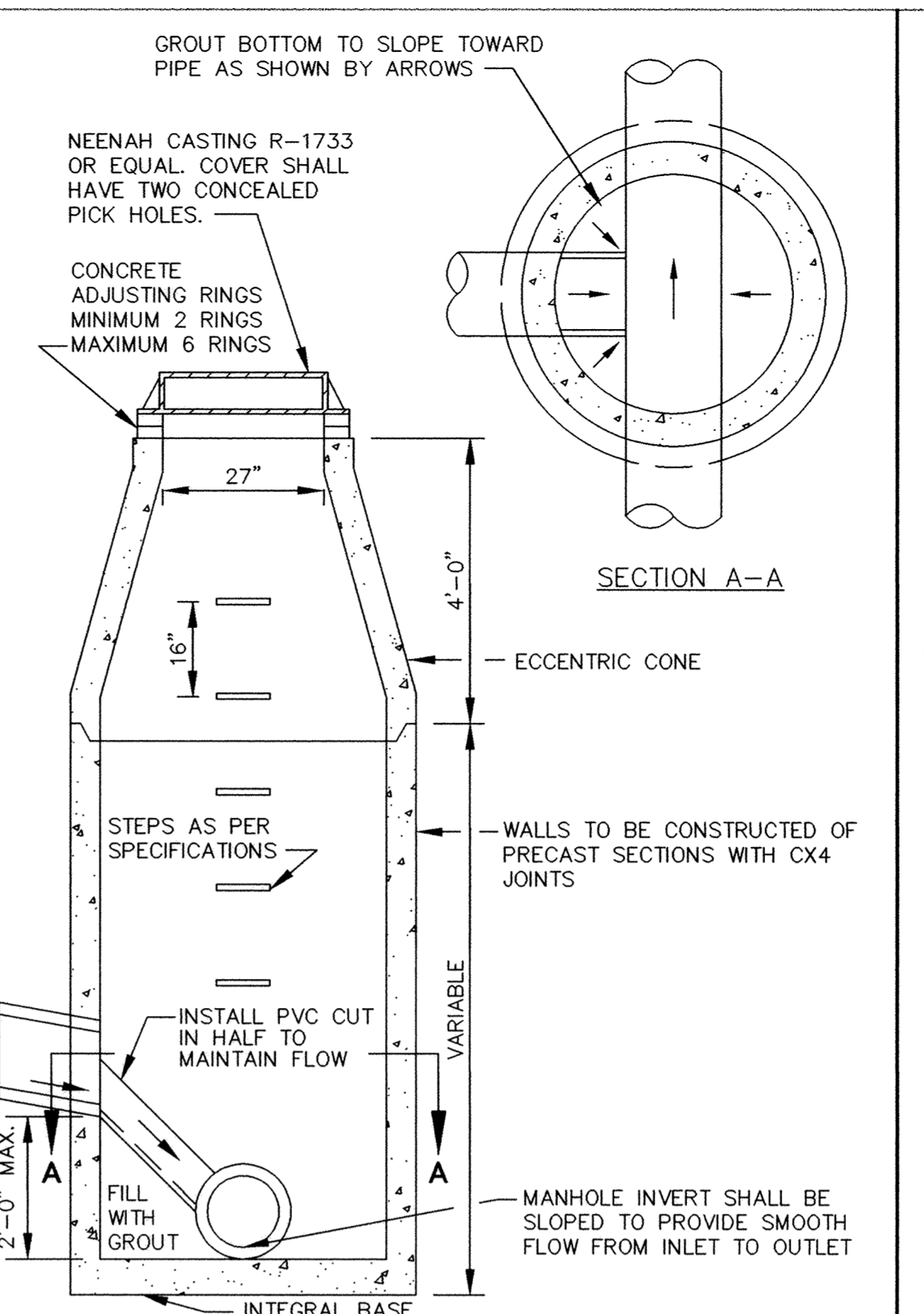
STANDARD AIR RELIEF MANHOLE



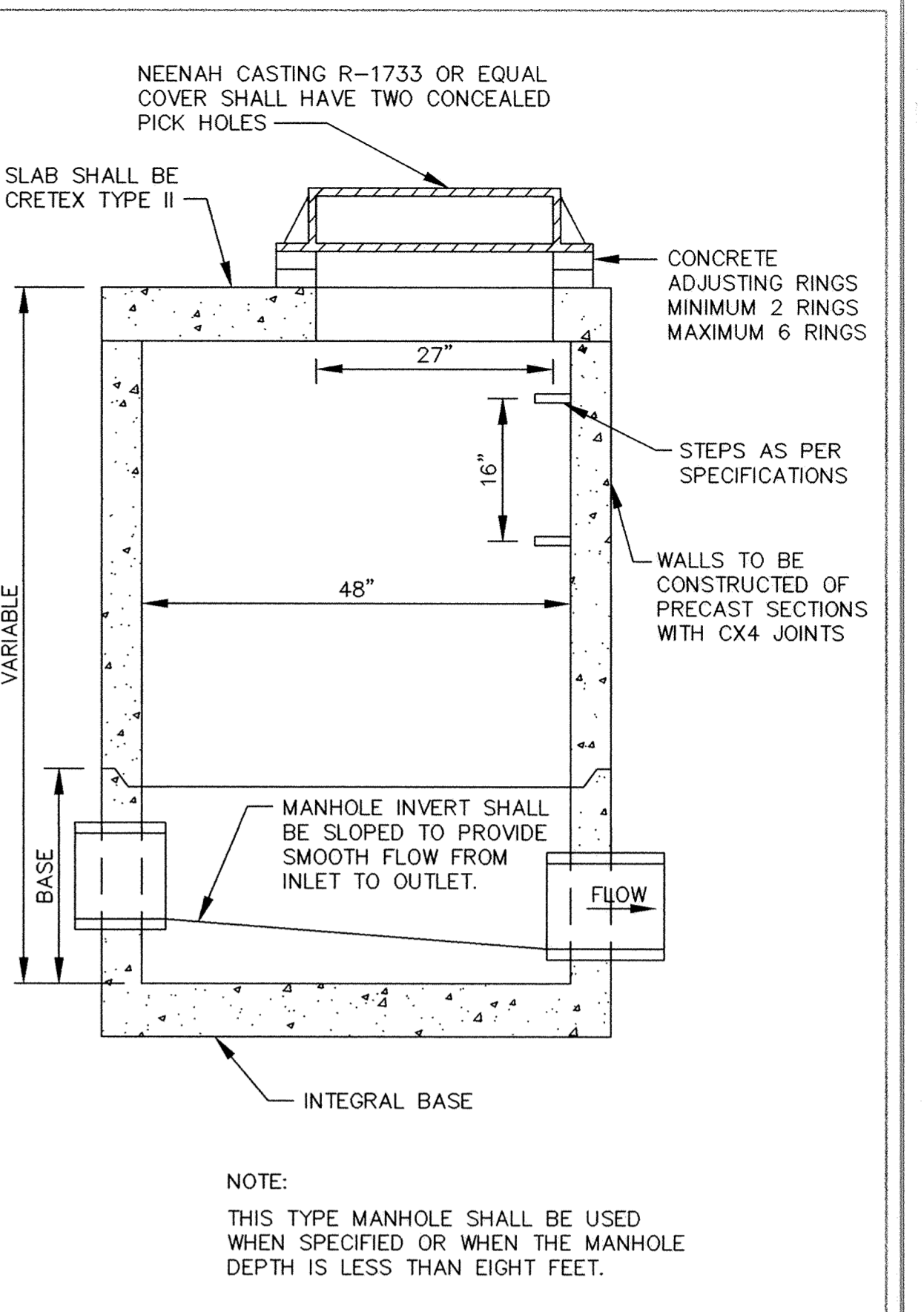
OUTSIDE DROP MANHOLE



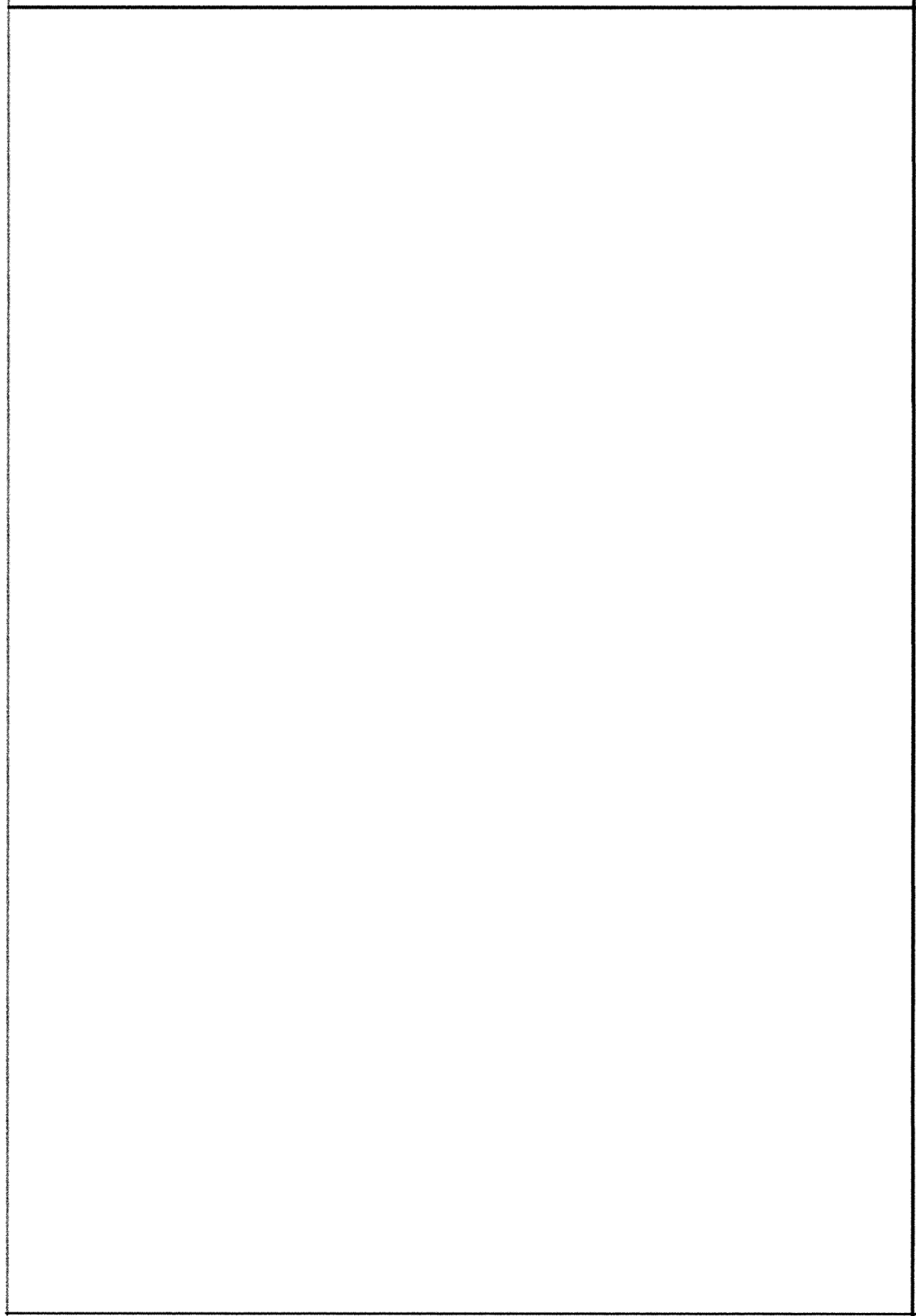
INSIDE DROP MANHOLE



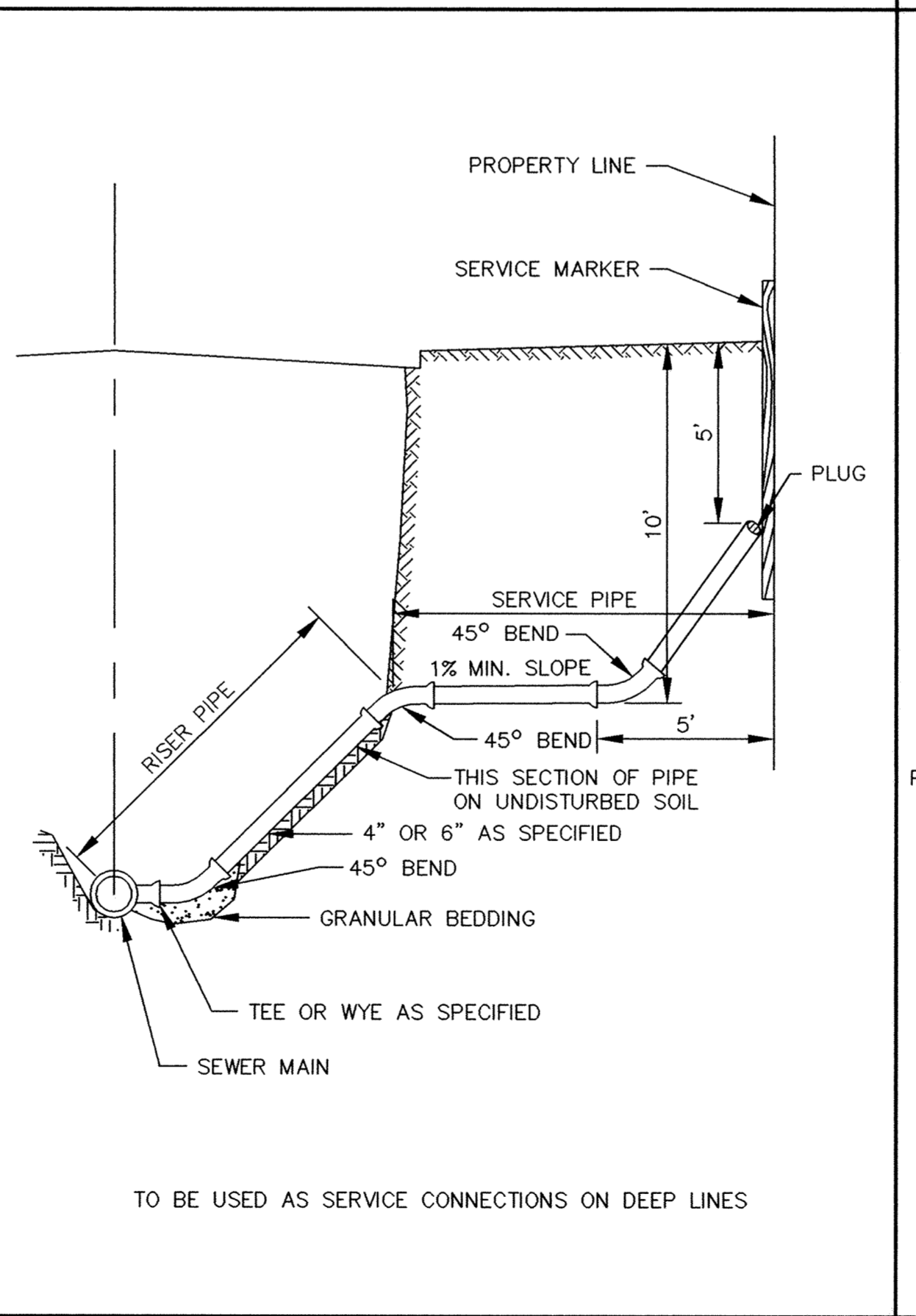
INSIDE DROP MANHOLE (TWO FEET OR LESS)



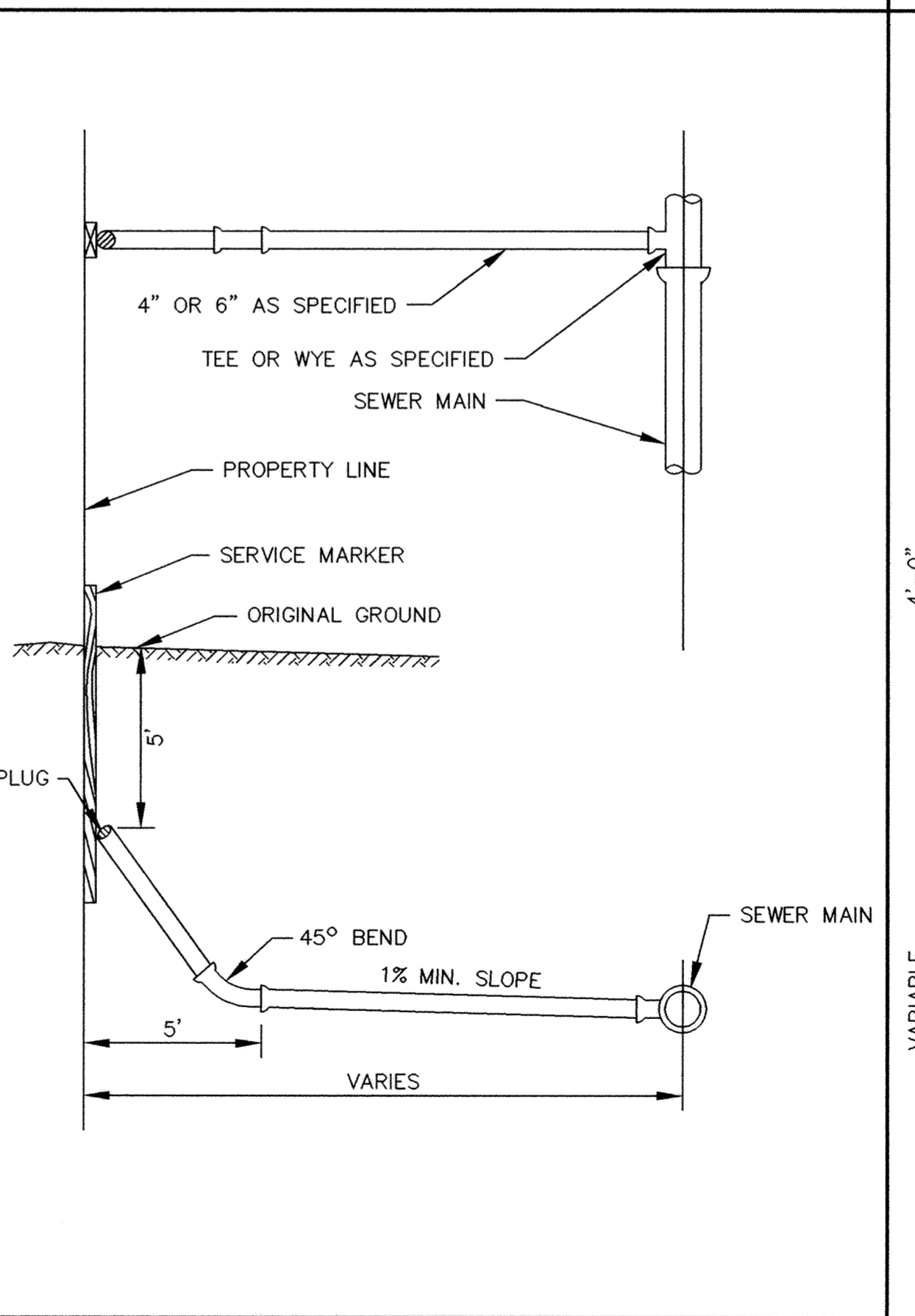
SLAB TOP MANHOLE



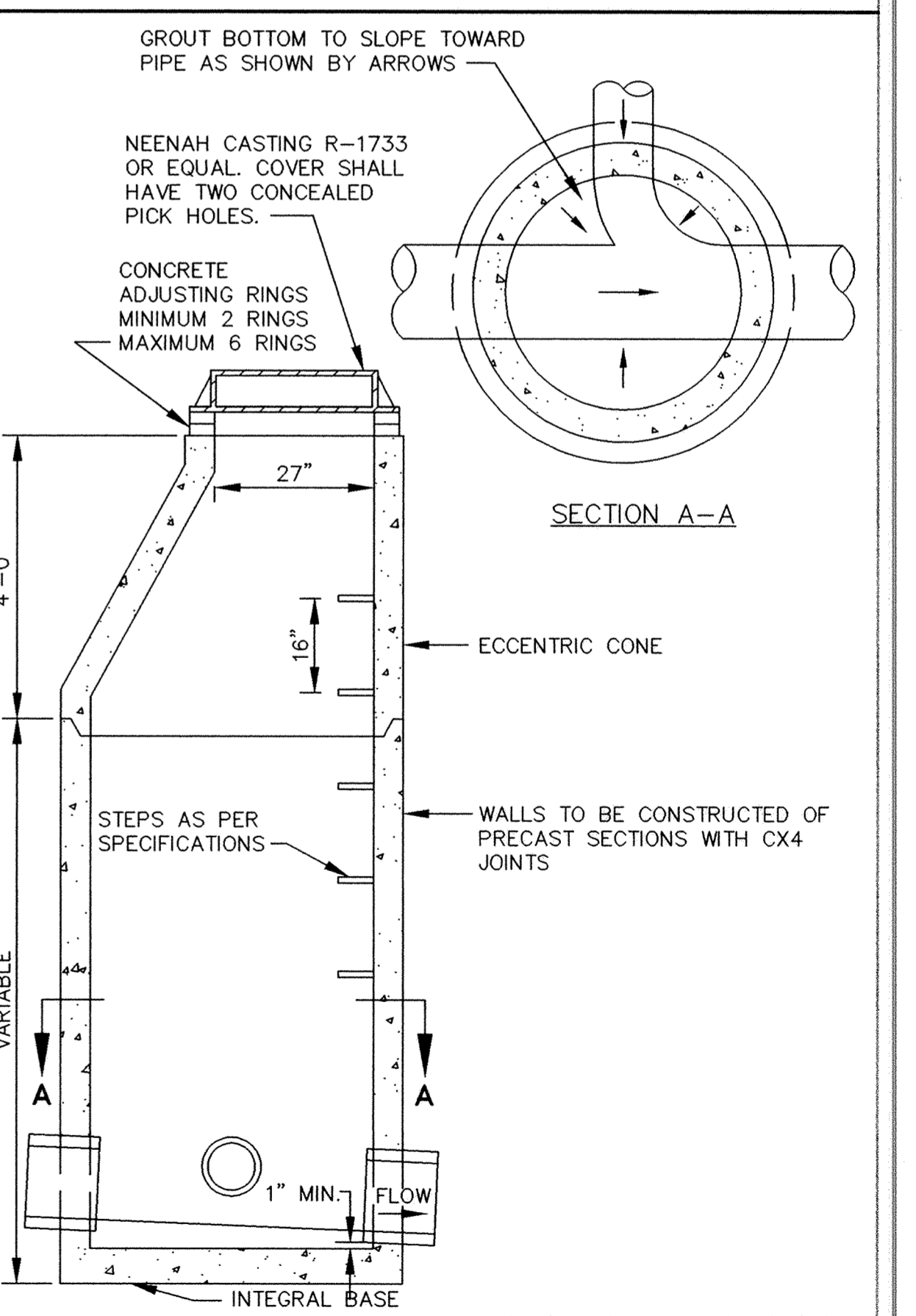
CLASS B PIPE BEDDING



SERVICE RISER SECTION



TYPICAL HOUSE SERVICE



STANDARD MANHOLE

DRAWN BY: LK JOB DATE: MAY 1998
 APPROVED: JOB NUMBER 803691J
 CAD DATE: MAY 1998
 CAD FILE: ER691-d3

I HEREBY CERTIFY THAT THIS PLAN, SPECIFICATION, OR REPORT WAS PREPARED BY ME OR UNDER MY DIRECT SUPERVISION AND THAT I AM A DULY REGISTERED PROFESSIONAL ENGINEER UNDER THE LAWS OF THE STATE OF MINNESOTA.
 DATE: 5-28-98 REG. NO. 18518

NO.	DATE	BY	REVISION DESCRIPTION

1326 ENERGY PARK DRIVE
 ST. PAUL, MINNESOTA 55108
 (612) 644-4389
Howard R. Green Company
 CONSULTING ENGINEERS

CITY OF ELK RIVER
 GUARDIAN ANGELS, BOSTON STREET, RAILROAD DRIVE AND JACKSON/HOLT
 SANITARY SEWER DETAILS

SHEET NO.
 20
 OF
 21

DRAWING NUMBER
 GUARD.98
 1300 1362