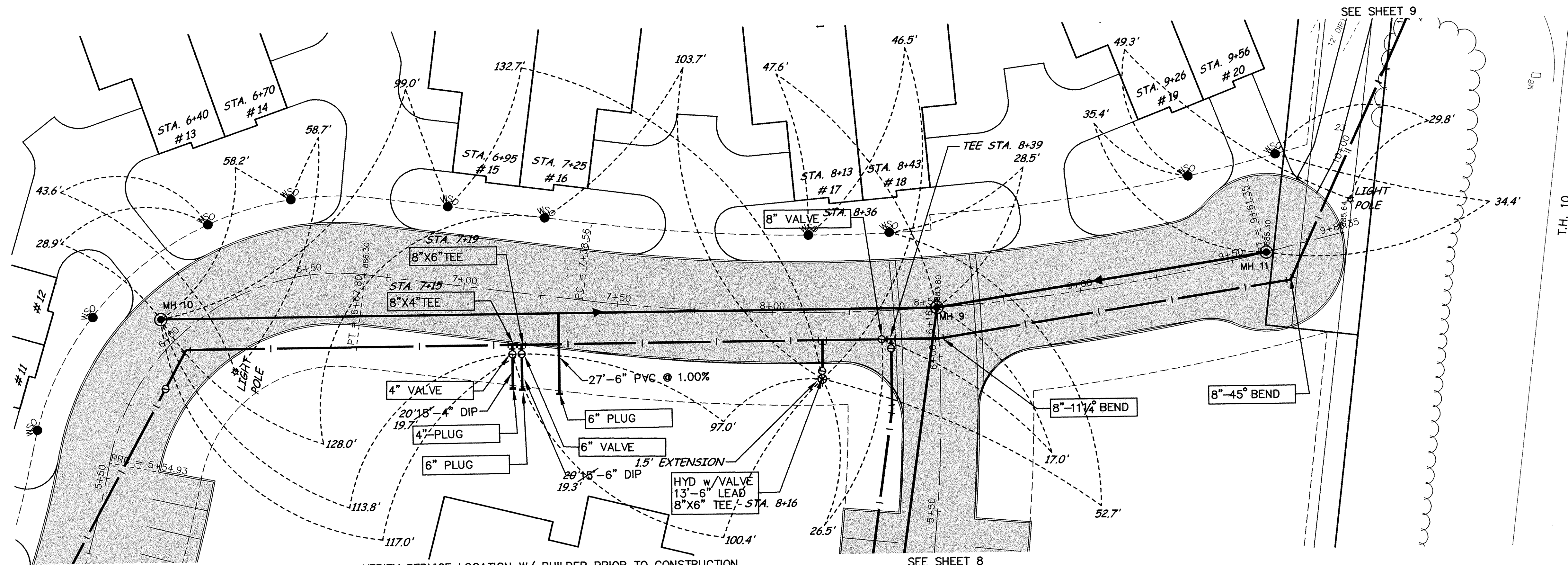


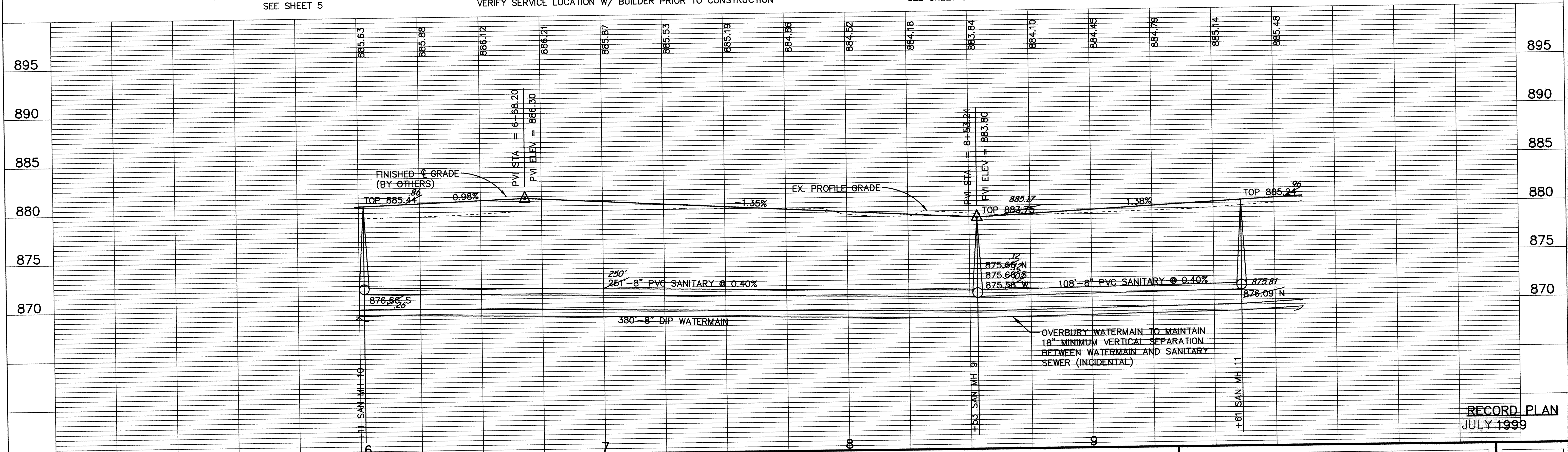
EAST ROAD



SEE SHEET 5

VERIFY SERVICE LOCATION W/ BUILDER PRIOR TO CONSTRUCTION

SEE SHEET 8



RECORD PLAN
JULY 1999

DESIGNED BY: PB JOB DATE: MAY 1998
 DRAWN BY: RKM JOB NUMBER: 803691J
 APPROVED: _____ CAD DATE: MAY 1998
 CAD FILE: 803691-3

I HEREBY CERTIFY THAT THIS PLAN, SPECIFICATION, OR REPORT WAS PREPARED BY ME OR UNDER MY DIRECT SUPERVISION AND THAT I AM A DULY REGISTERED PROFESSIONAL ENGINEER UNDER THE LAWS OF THE STATE OF MINNESOTA.
 DATE: 6-24-98 REG. NO. 18568

NO.	DATE	BY	REVISION DESCRIPTION
1.	6/22/98		VALVE LOCATION CHANGED PER CITY COMMENT

1326 ENERGY PARK DRIVE
ST. PAUL, MINNESOTA 55108
(612) 644-4389

Howard R. Green Company
CONSULTING ENGINEERS

CITY OF ELK RIVER
GUARDIAN ANGELS
UTILITY IMPROVEMENTS

SANITARY SEWER AND WATERMAIN
EAST ROAD
STA. 6+00 TO STA. 9+86.35

SHEET NO.
6
OF
21

1396 1370