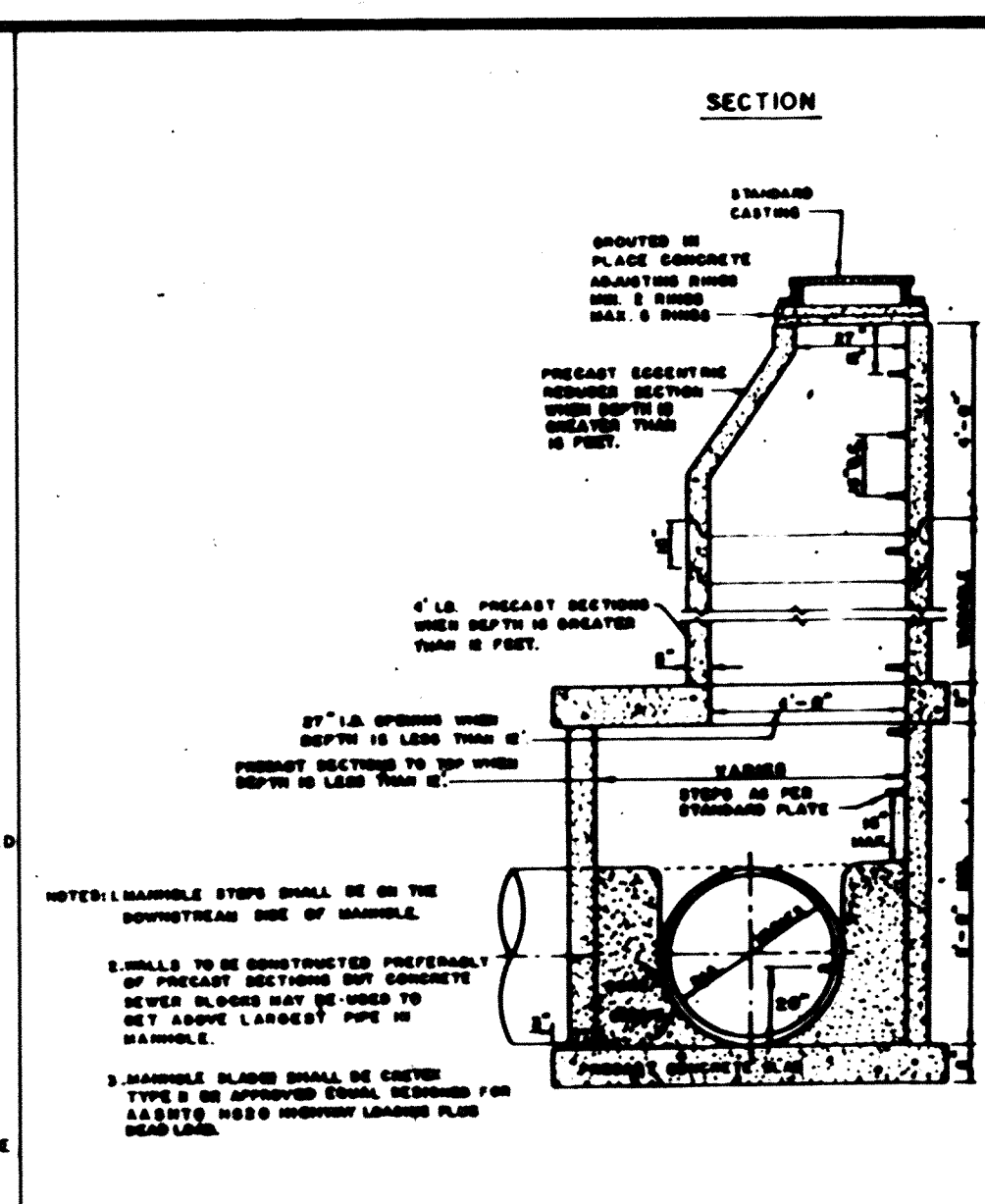
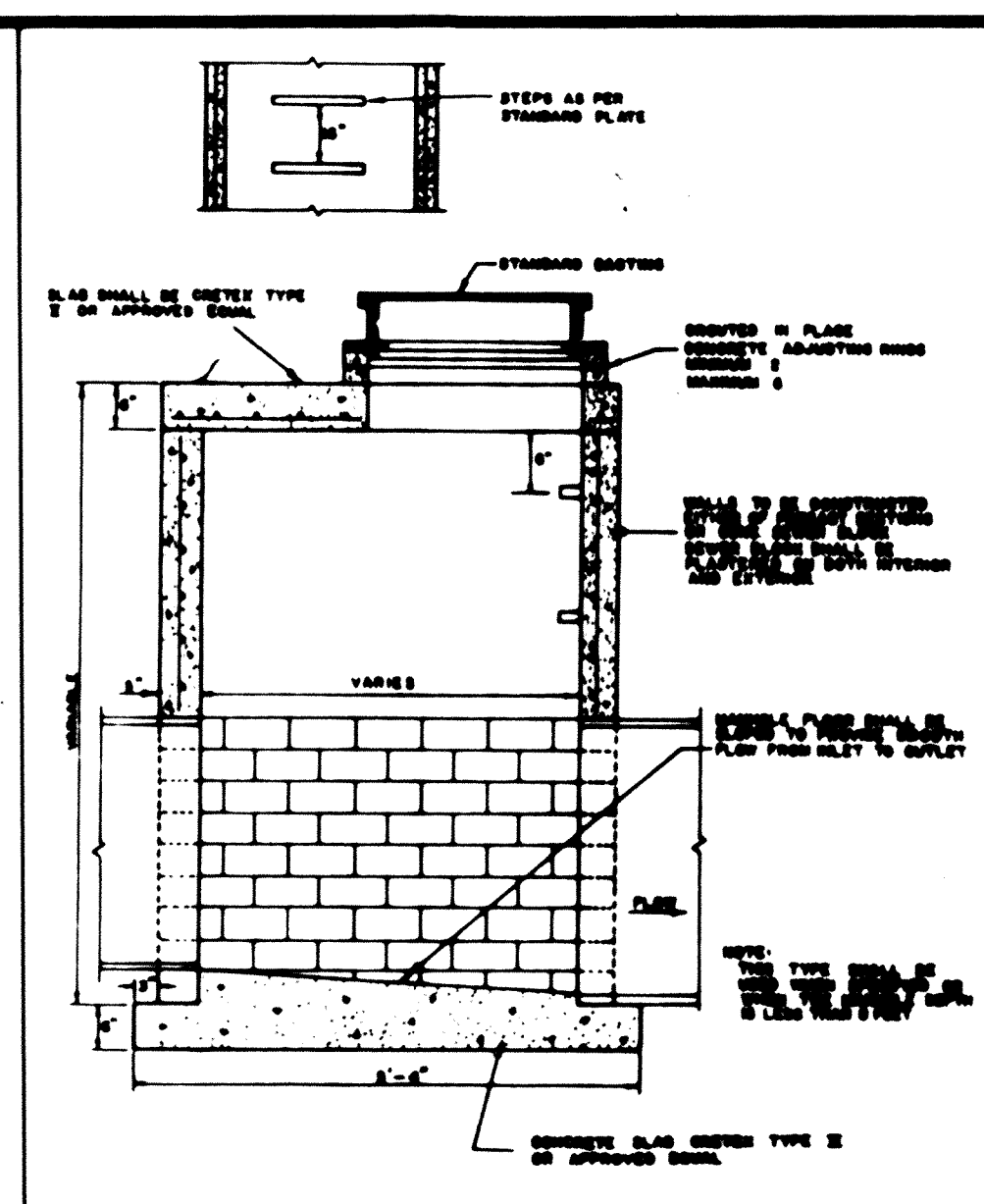


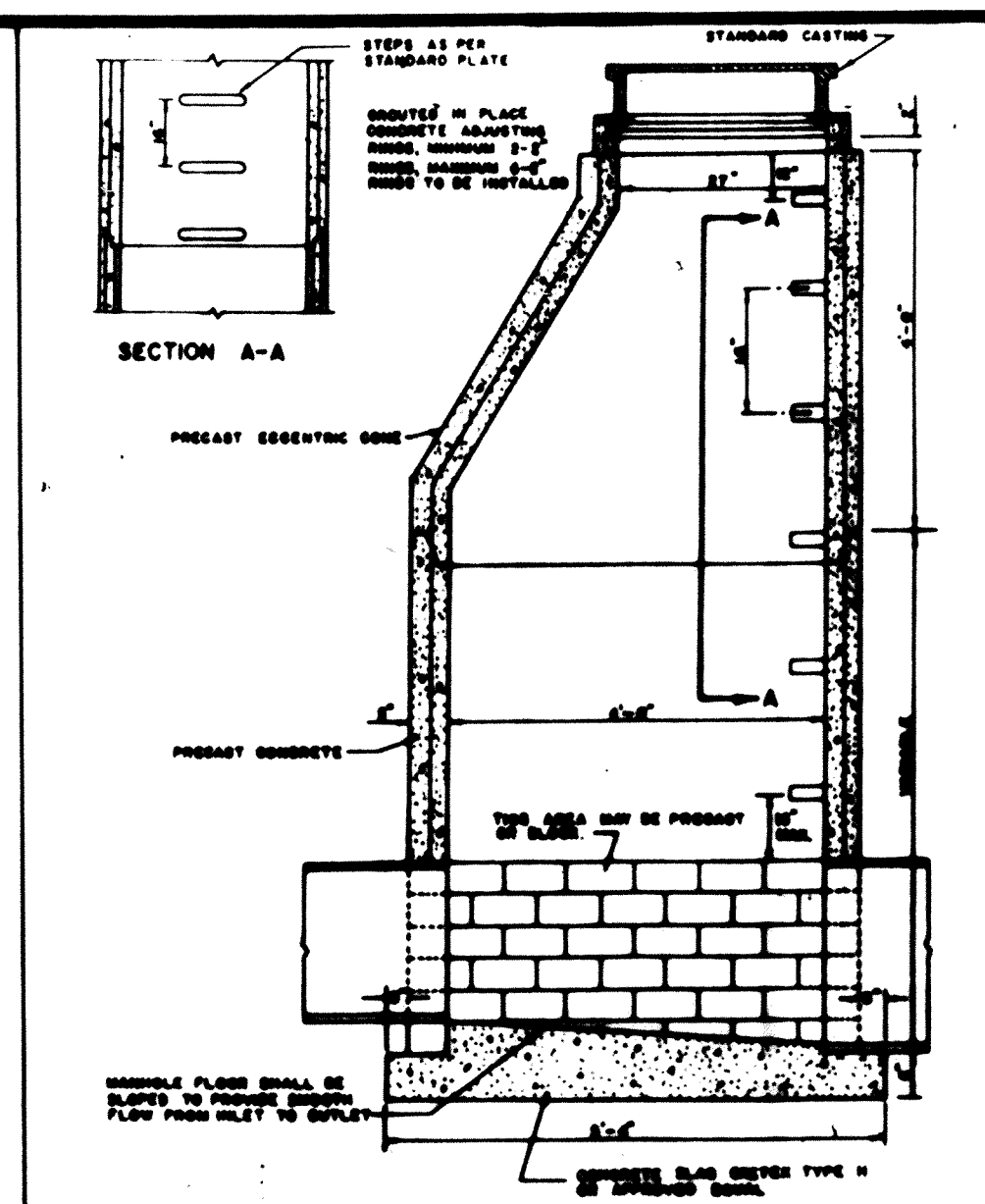
Shallow Catch Basin



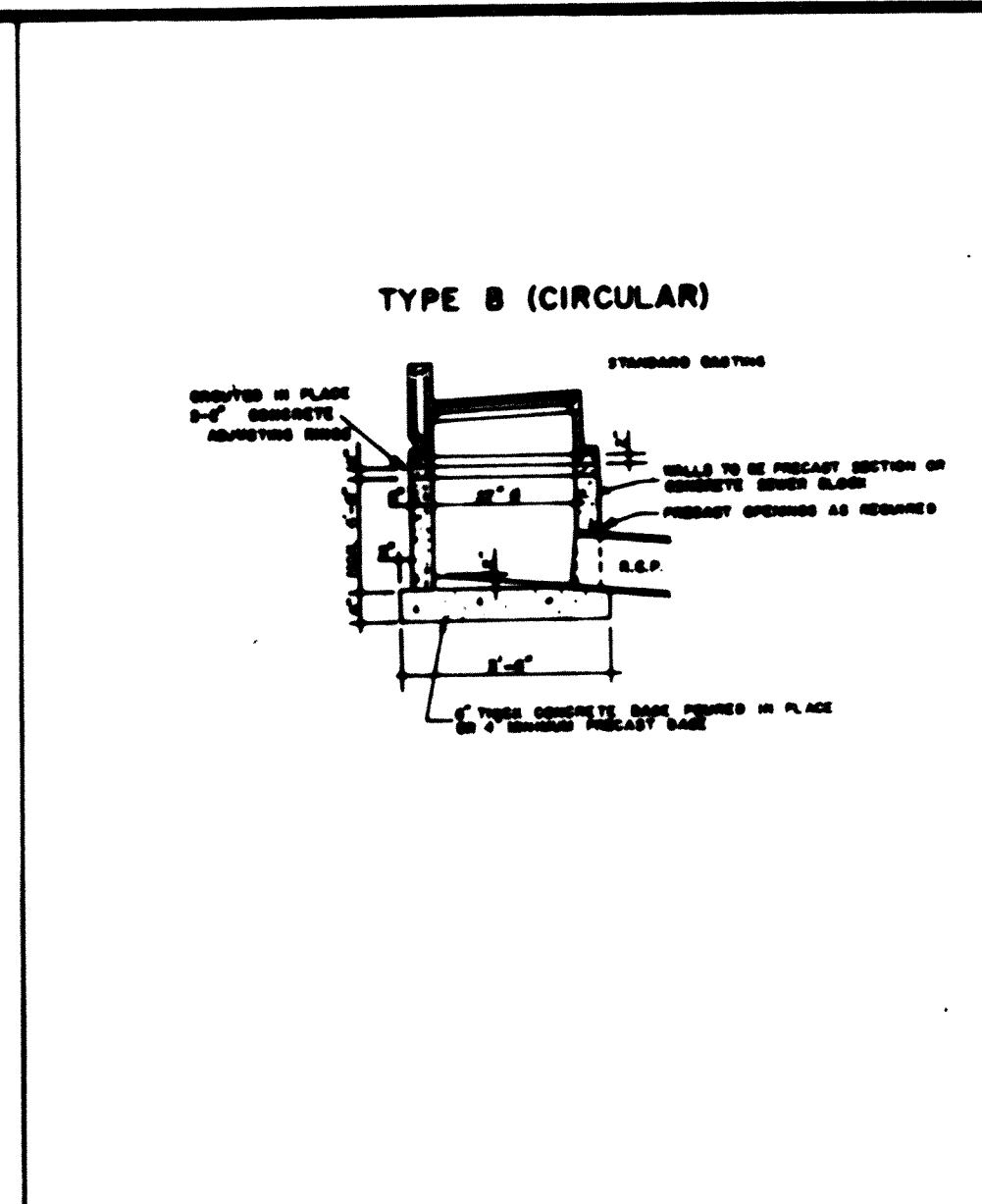
Large Diameter Manhole



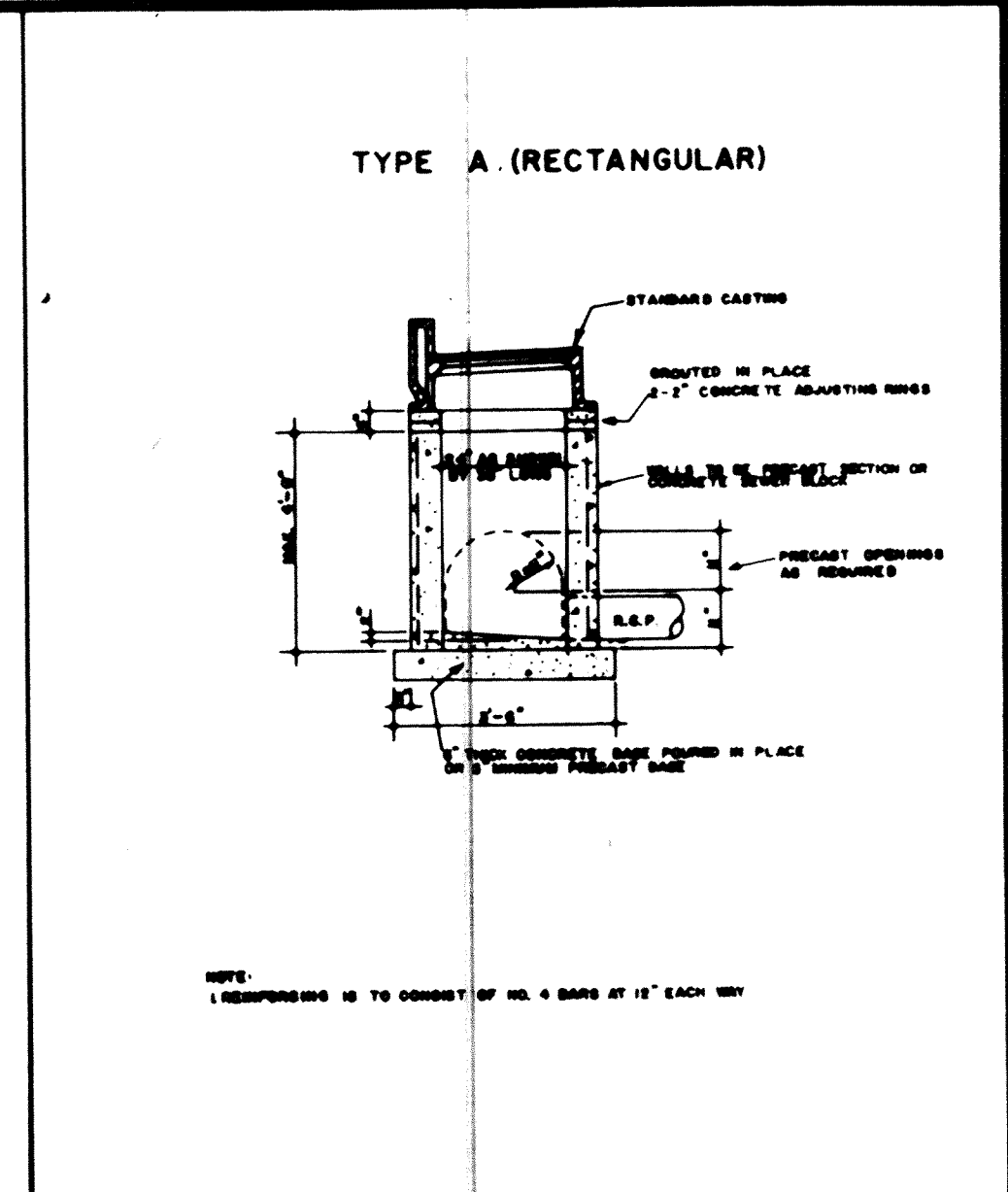
Slab-Top Manhole



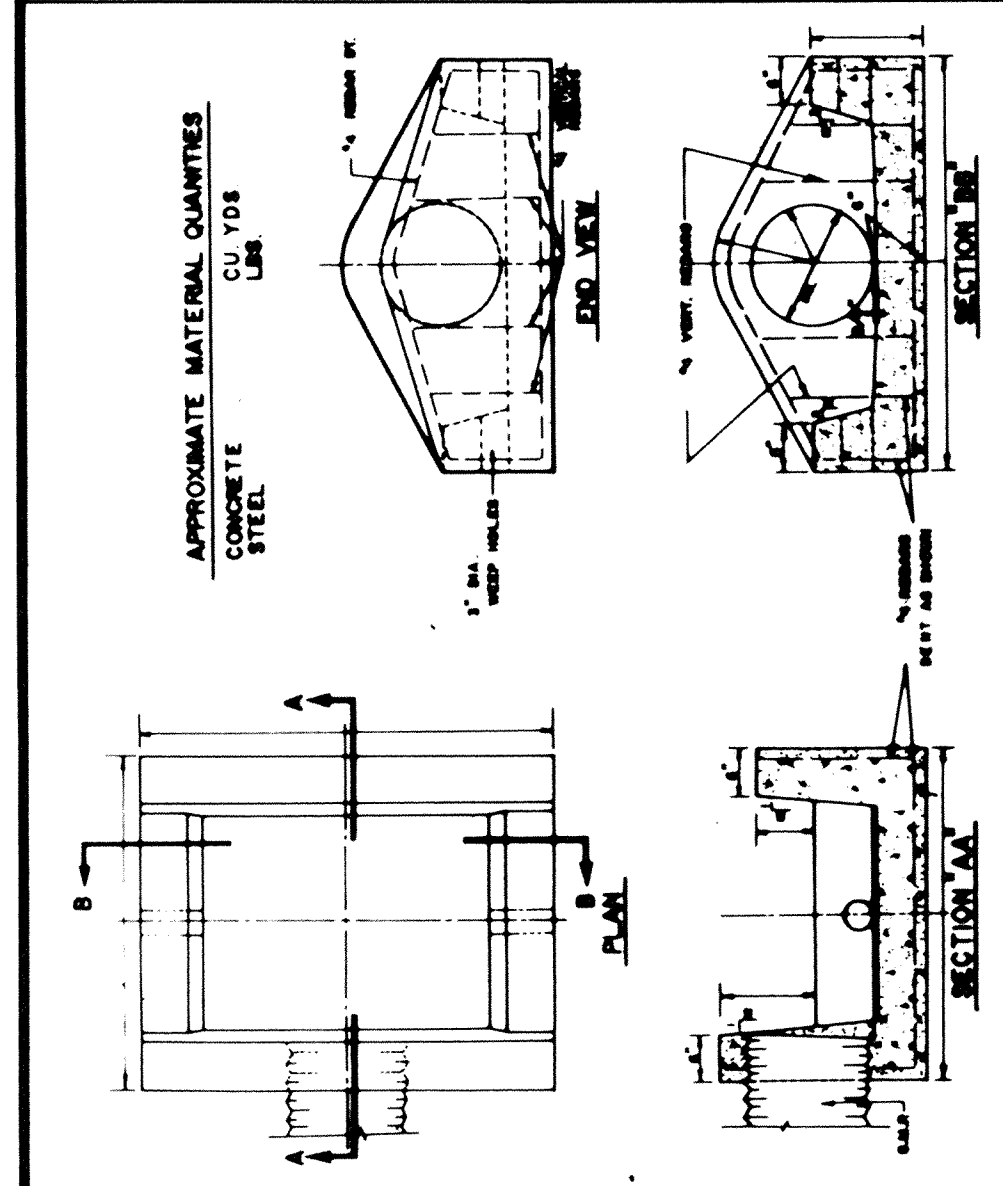
Standard Manhole



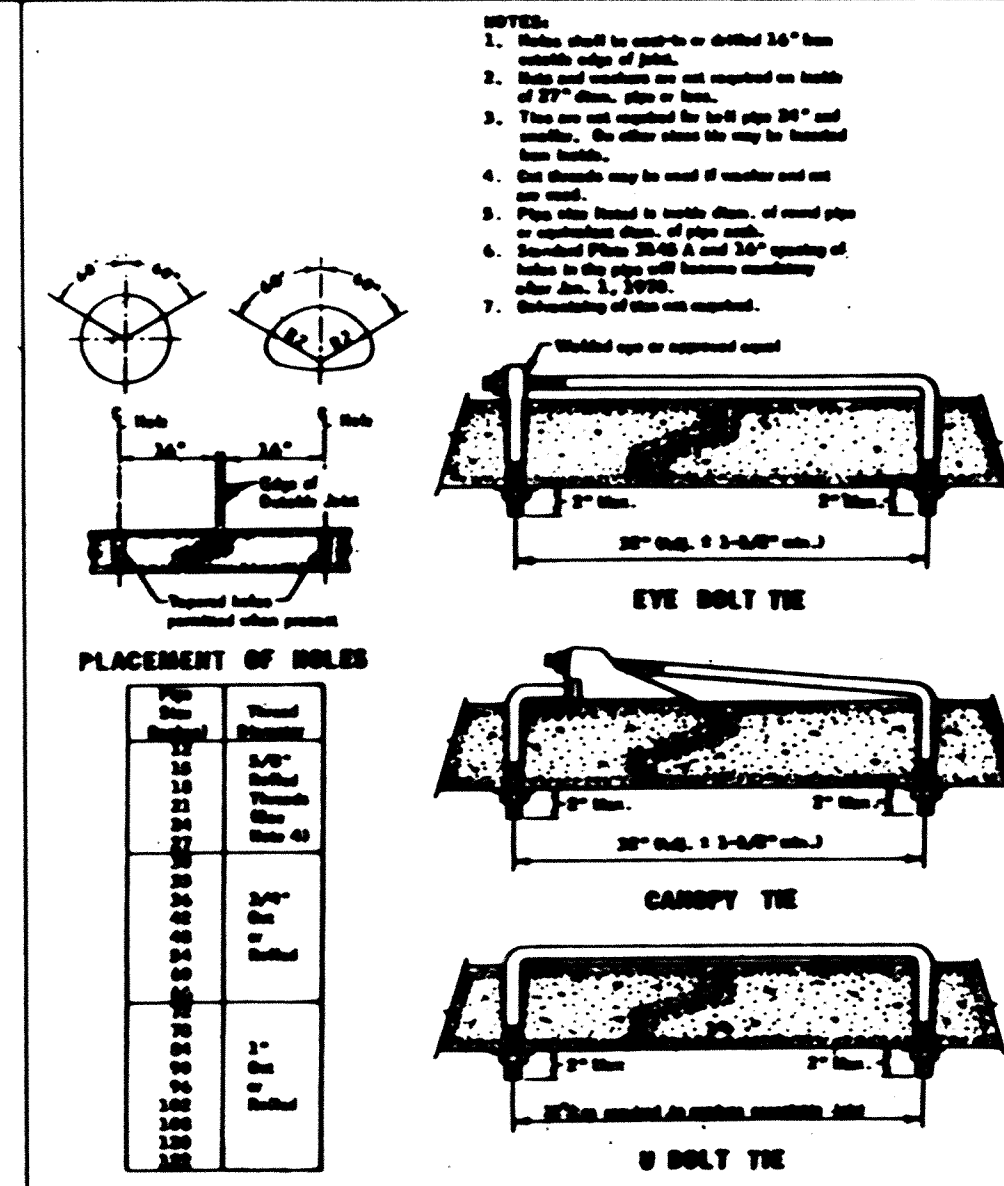
Shallow Manhole Or Catch Basin



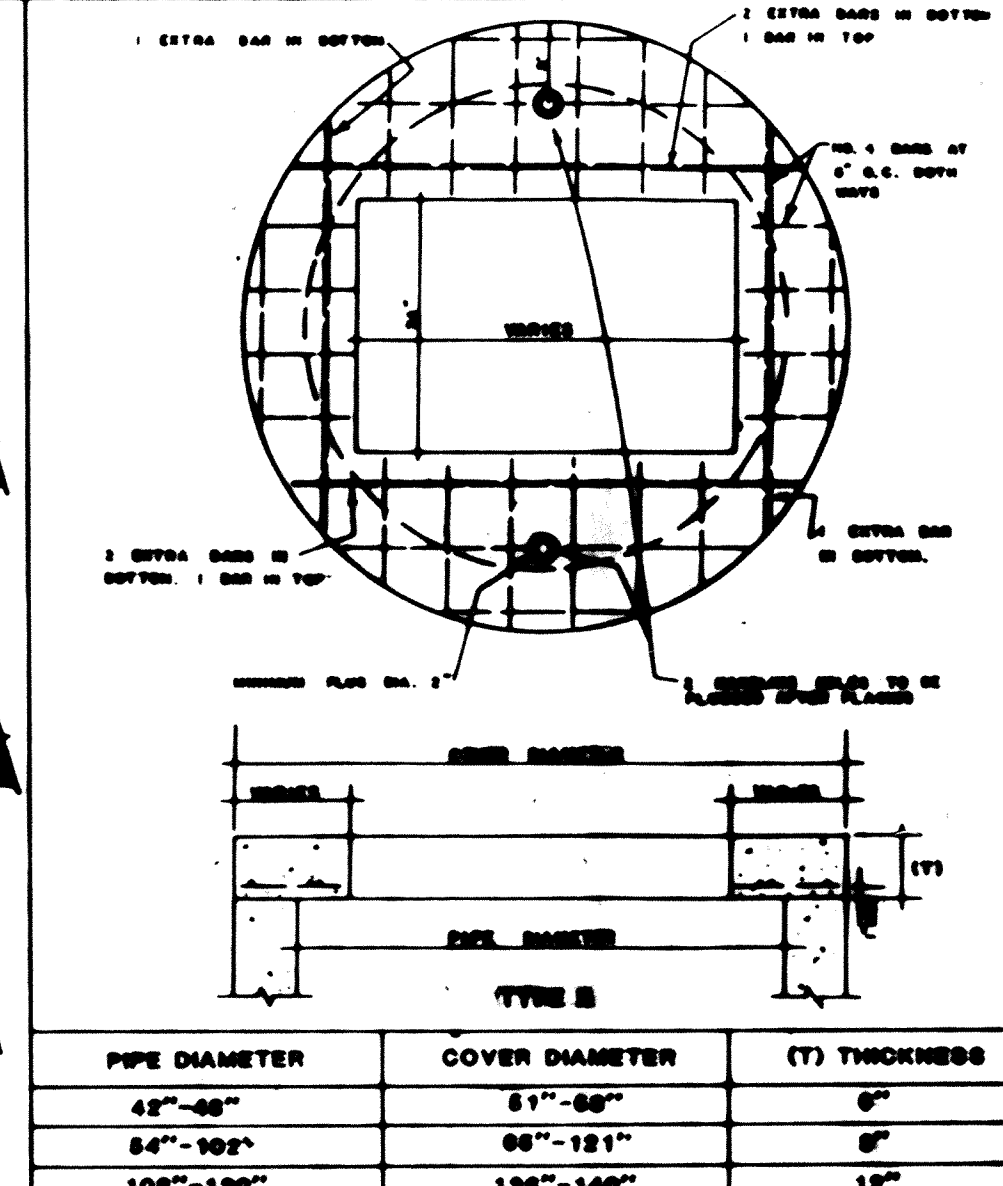
Shallow Manhole Or Catch Basin



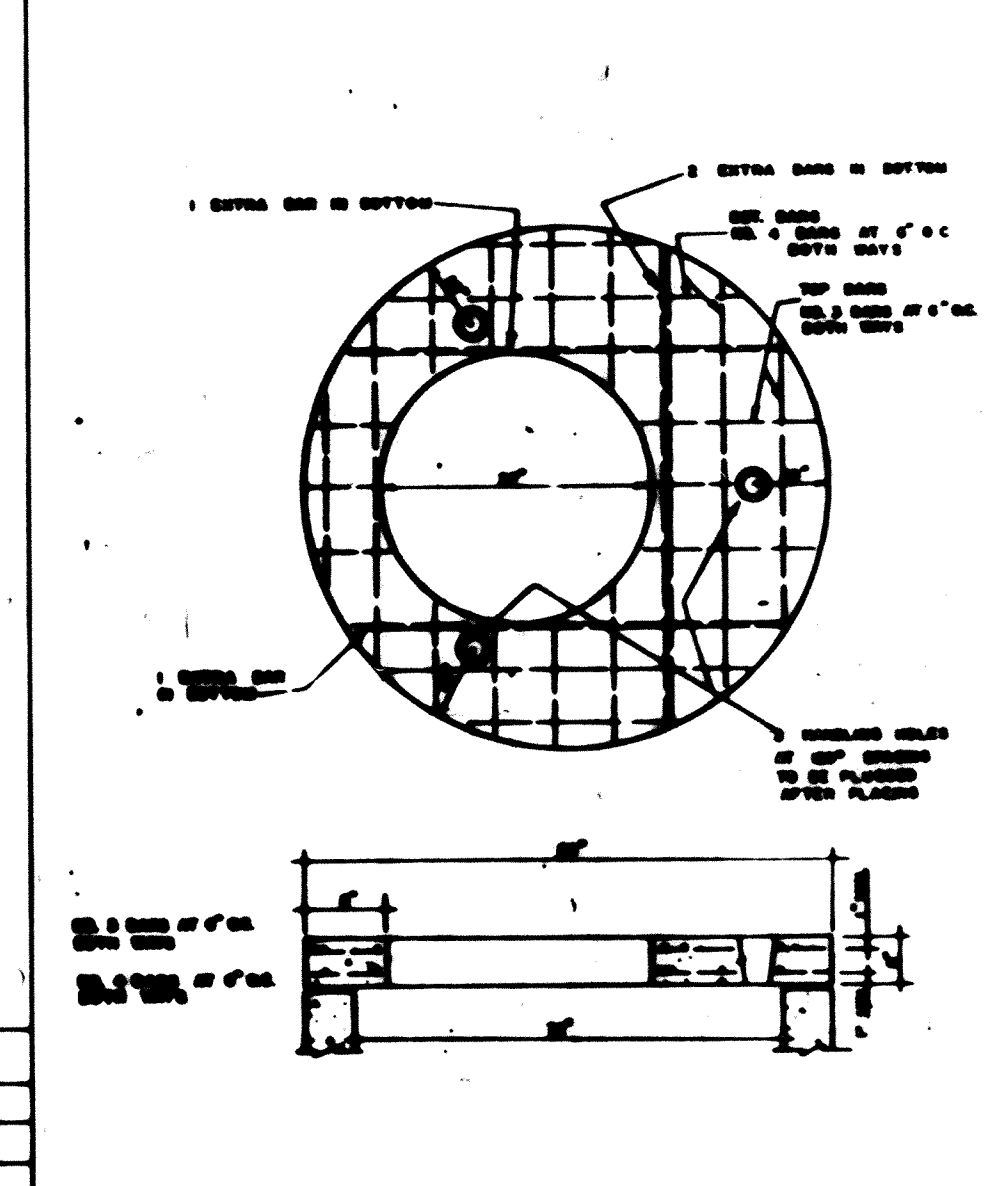
Concrete Surge Basin



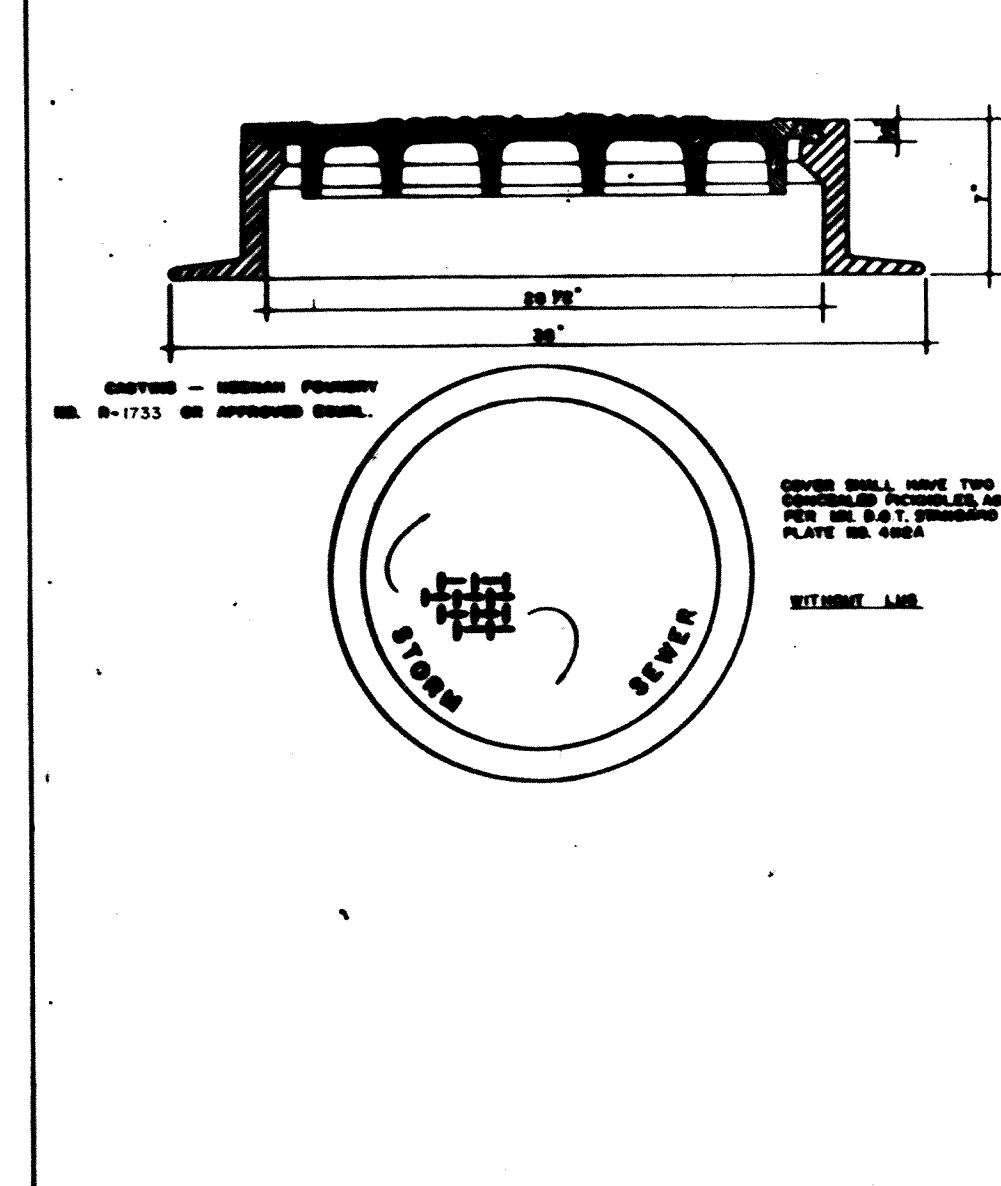
Concrete Pipe Joint Ties



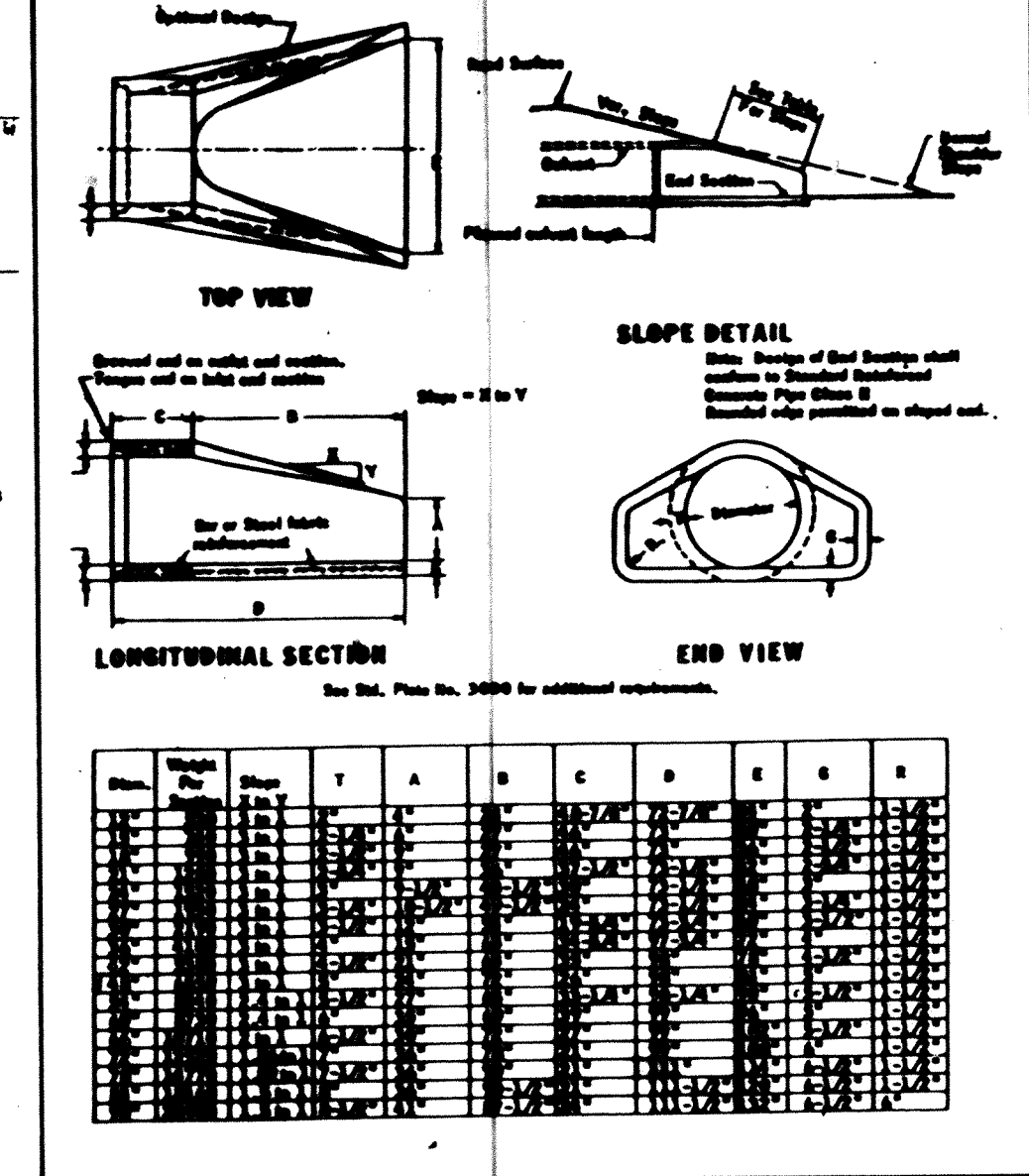
Slab-Top (Rectangular Opening)



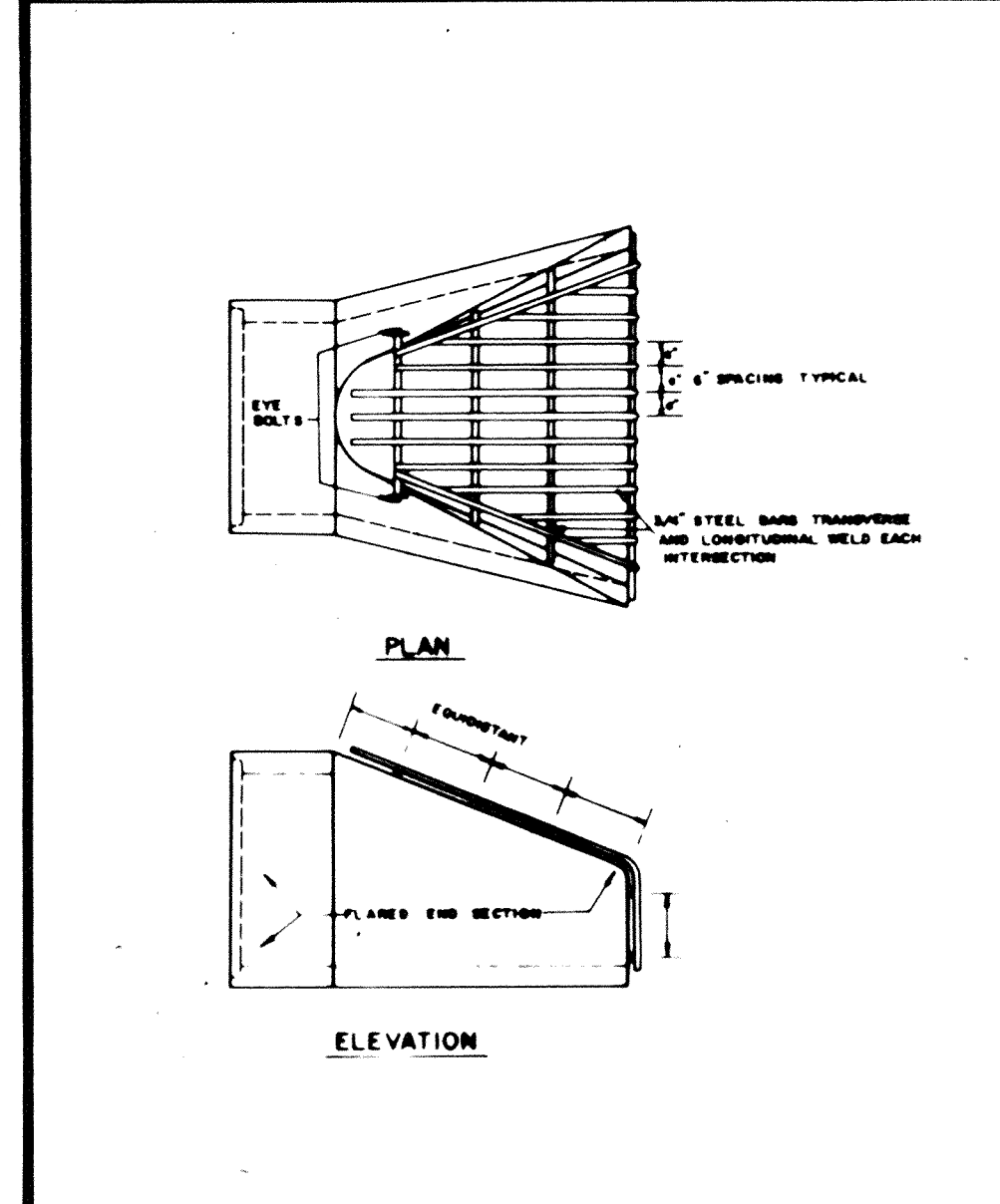
Slab-Top (27" Circular Opening)



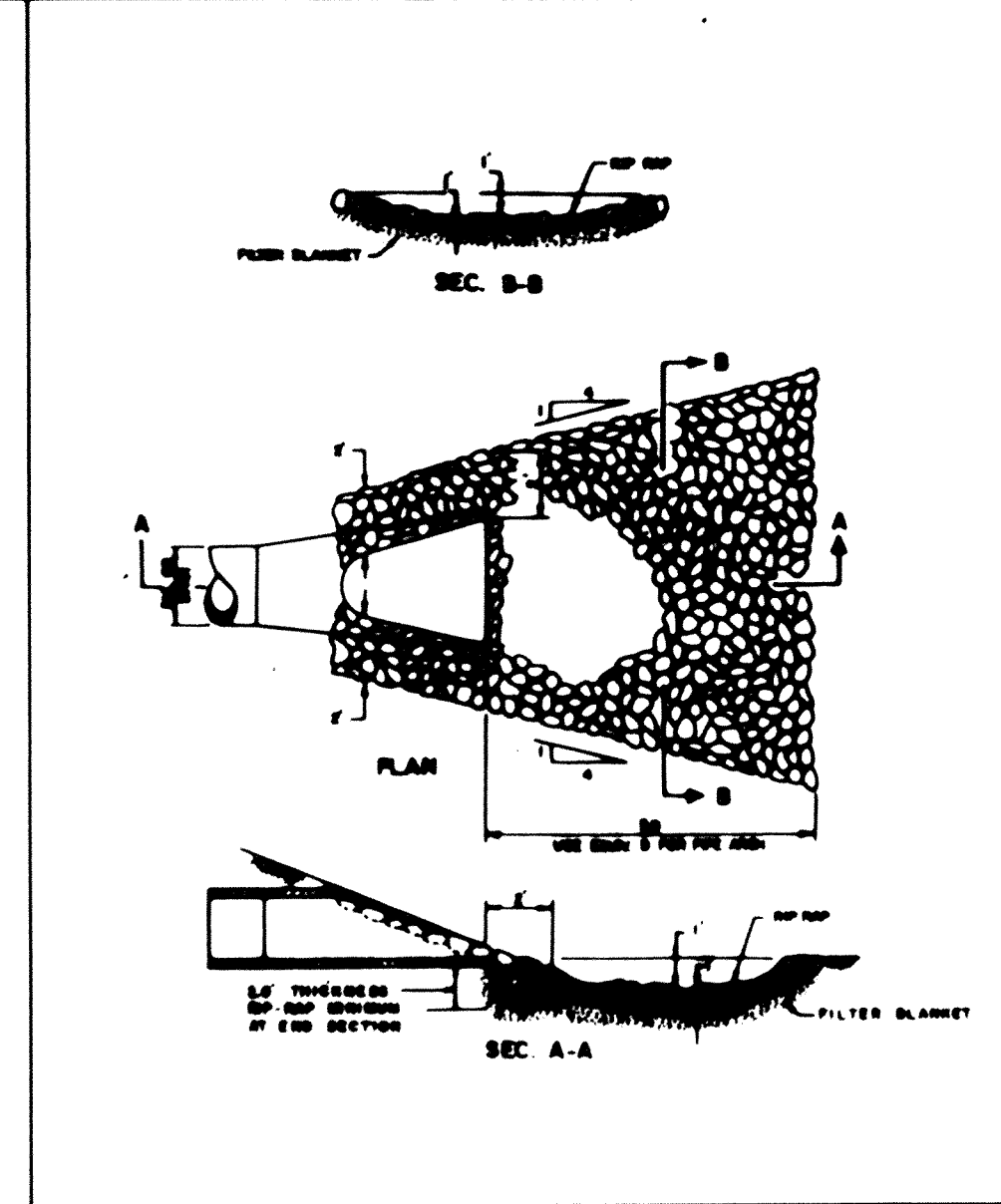
Cover - Neenah Foundry R-1758 Or Approved Equal



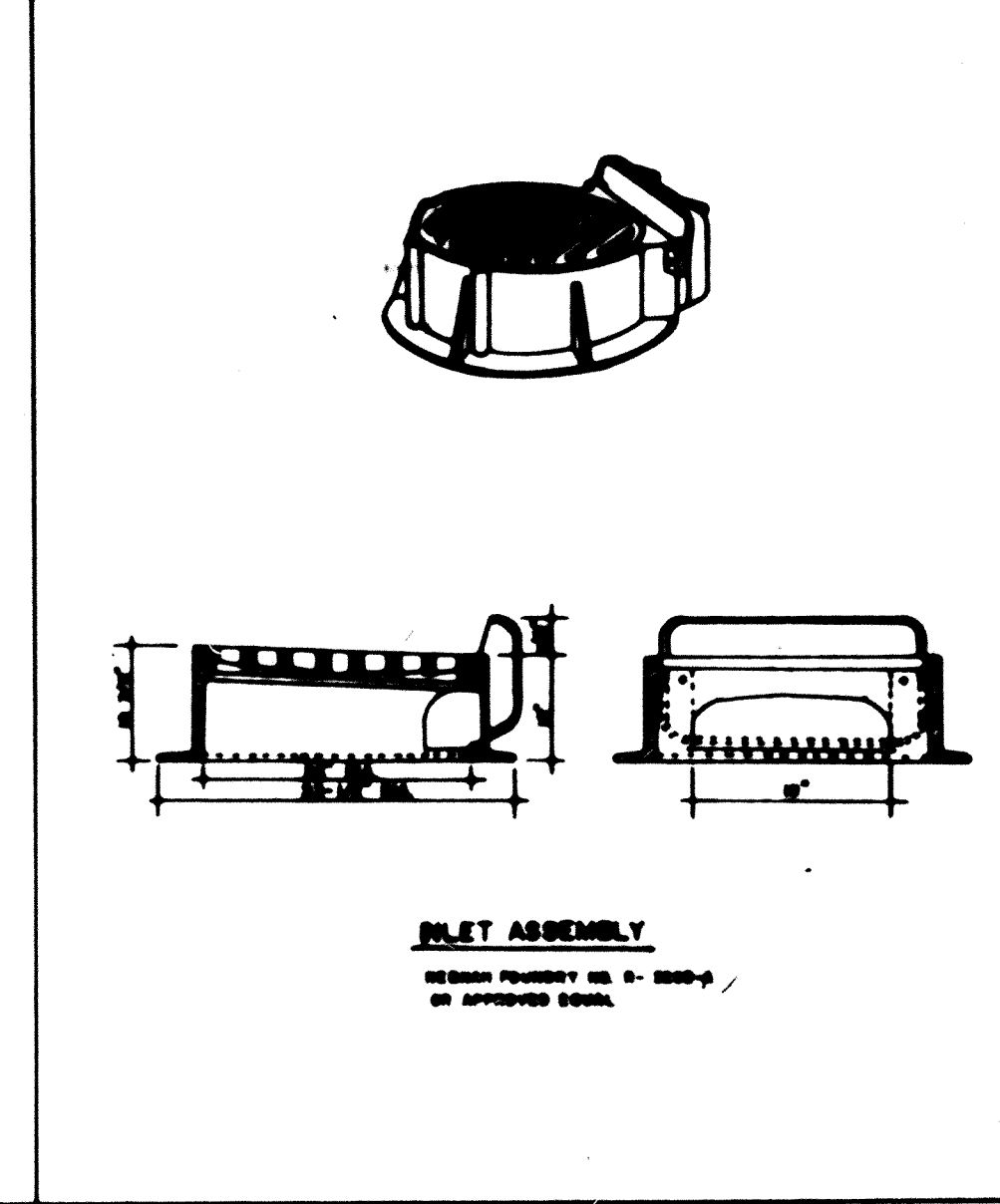
Reinforced Concrete Pipe Apron



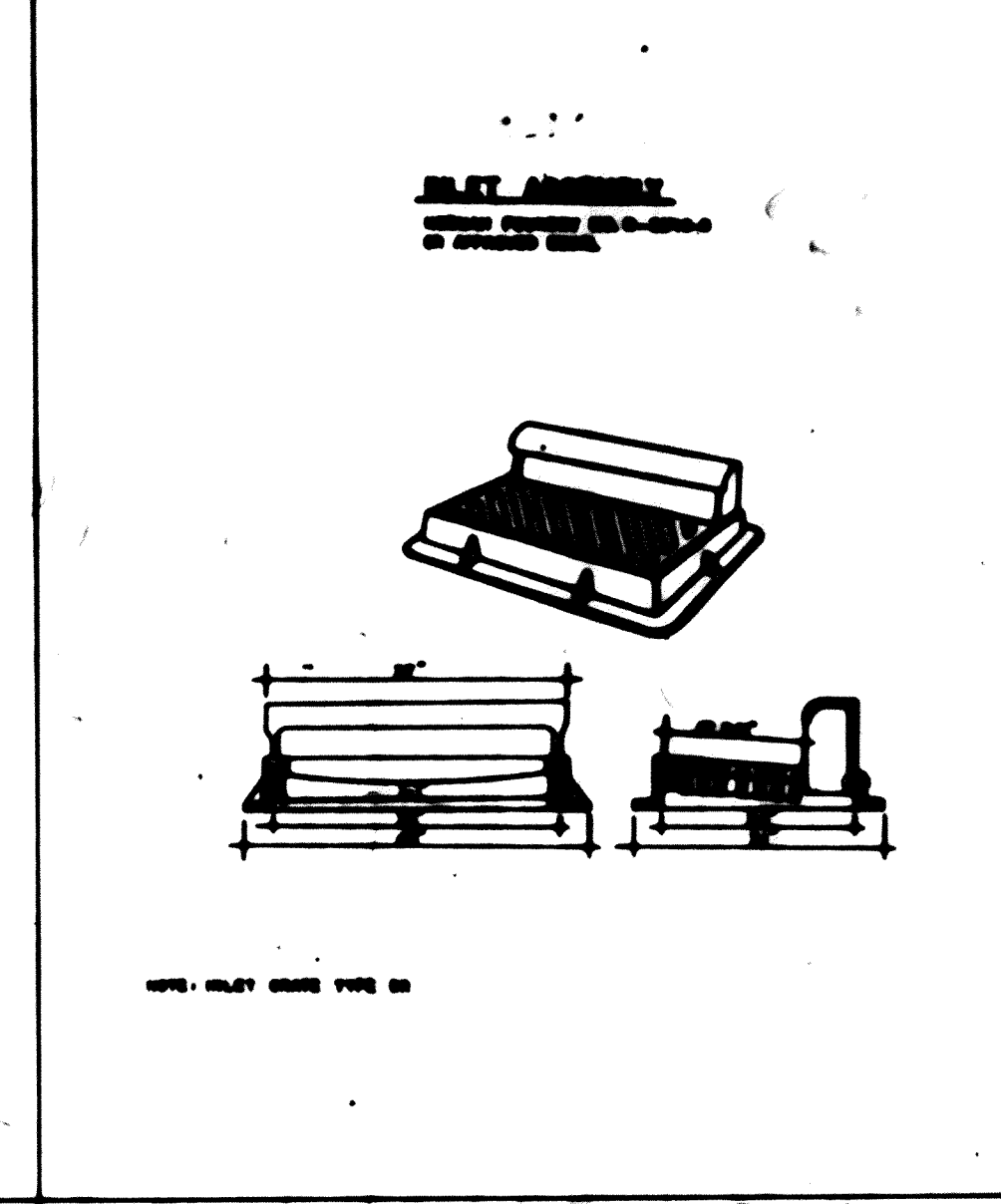
Trash Guard



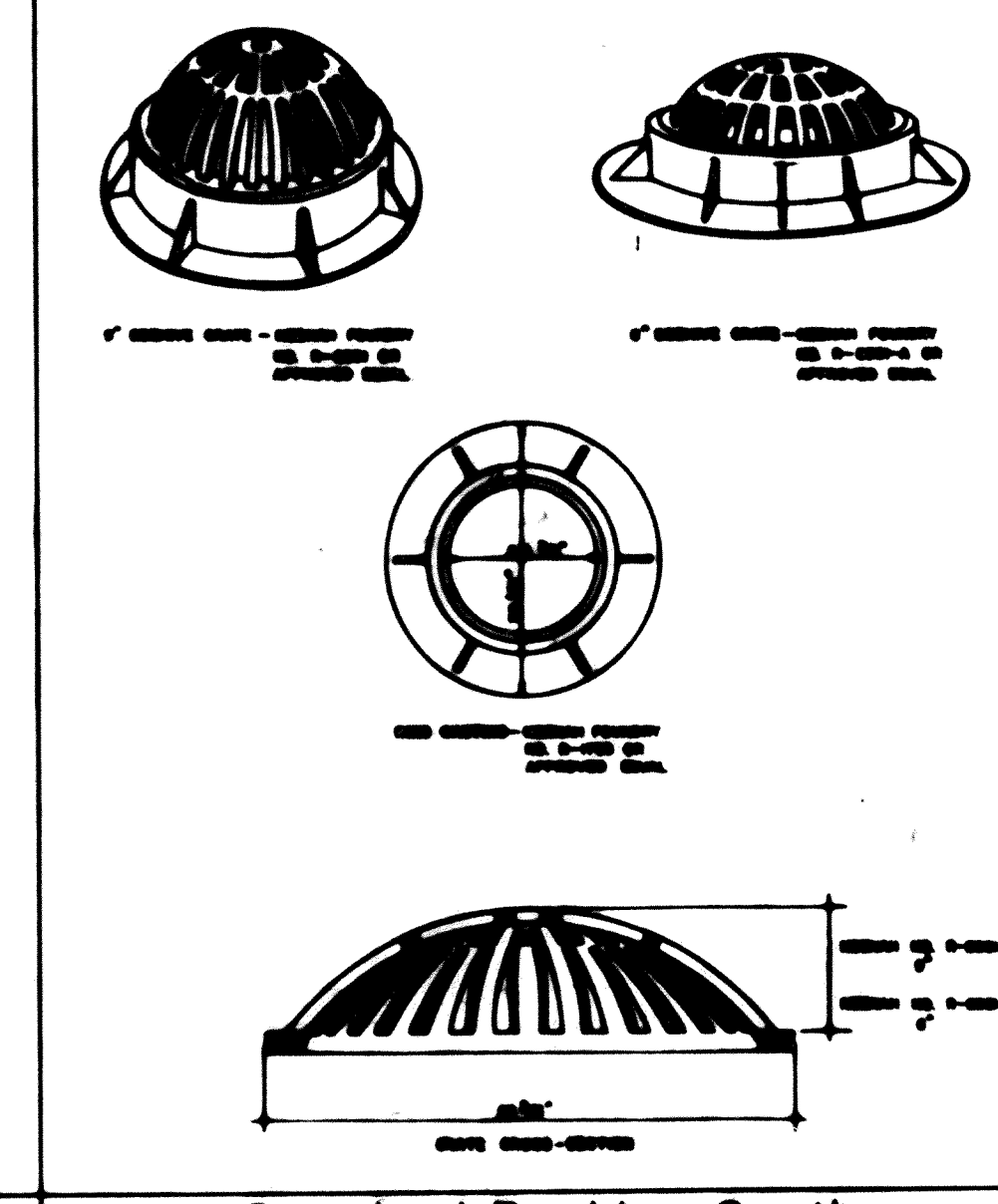
Rip Rap Detail



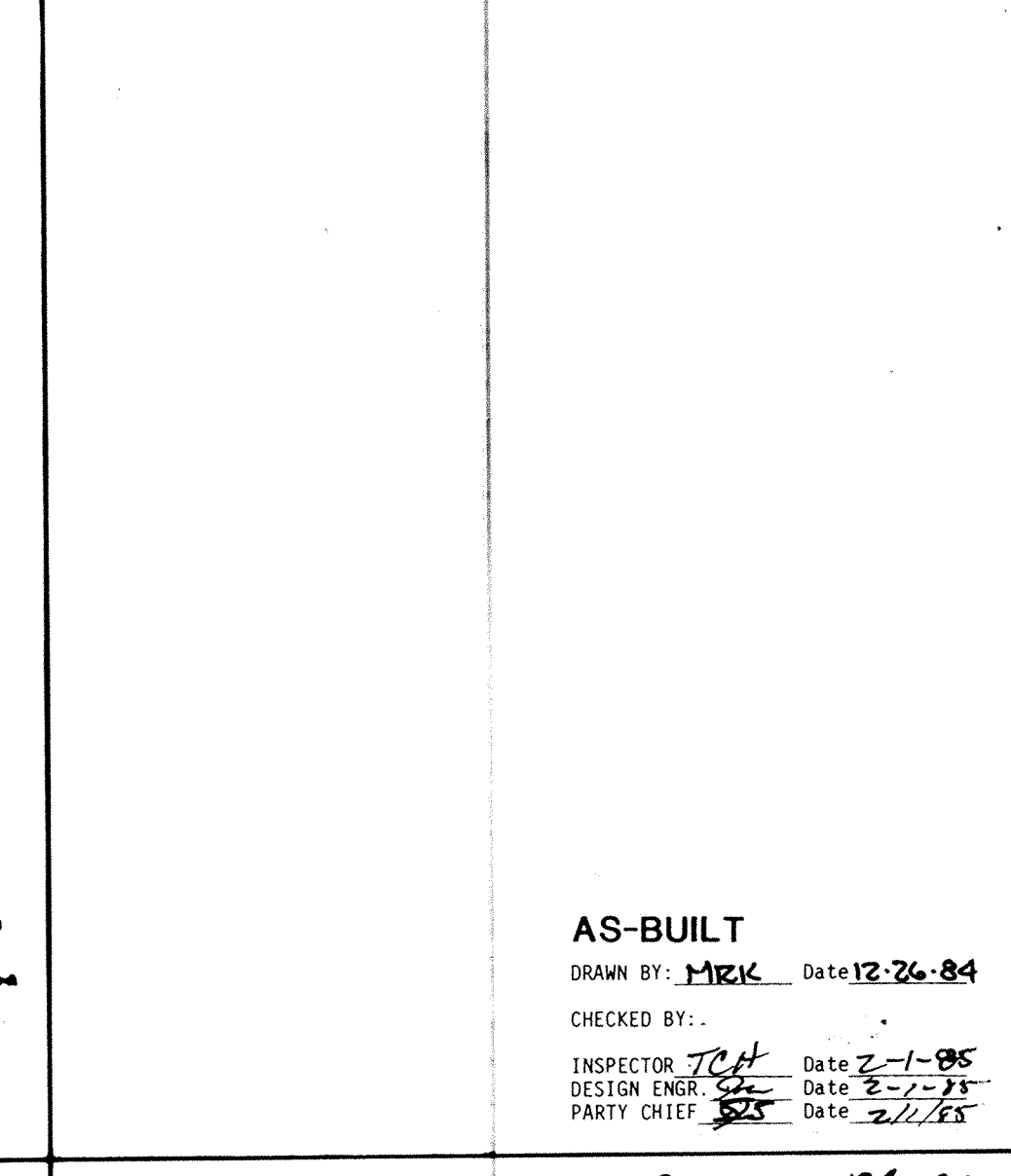
Standard Catch Basin Casting



Standard Catch Basin Casting



Standard Beehive Casting



SAP 204-124-01

I hereby certify that this plan, specification or report was prepared by me or under my direct supervision and that I am a duly Registered Professional Engineer under the laws of the State of Wisconsin, License No. 124,001, dated 12/15/84.

*Larry J. Maurer*  
 Date: 3/1/85  
 Rtn. No. 15316

CITY OF ELK RIVER  
 DETAIL PLATES  
 STORM SEWER

DESIGNED BY: TJM  
 CHECKED BY: TJM  
 SCALE: NONE  
 DRAWN BY: MRI

DATE: FEB 1983  
 SHEET: 20 OF 27 SHEETS  
 FILE NO: ER31192