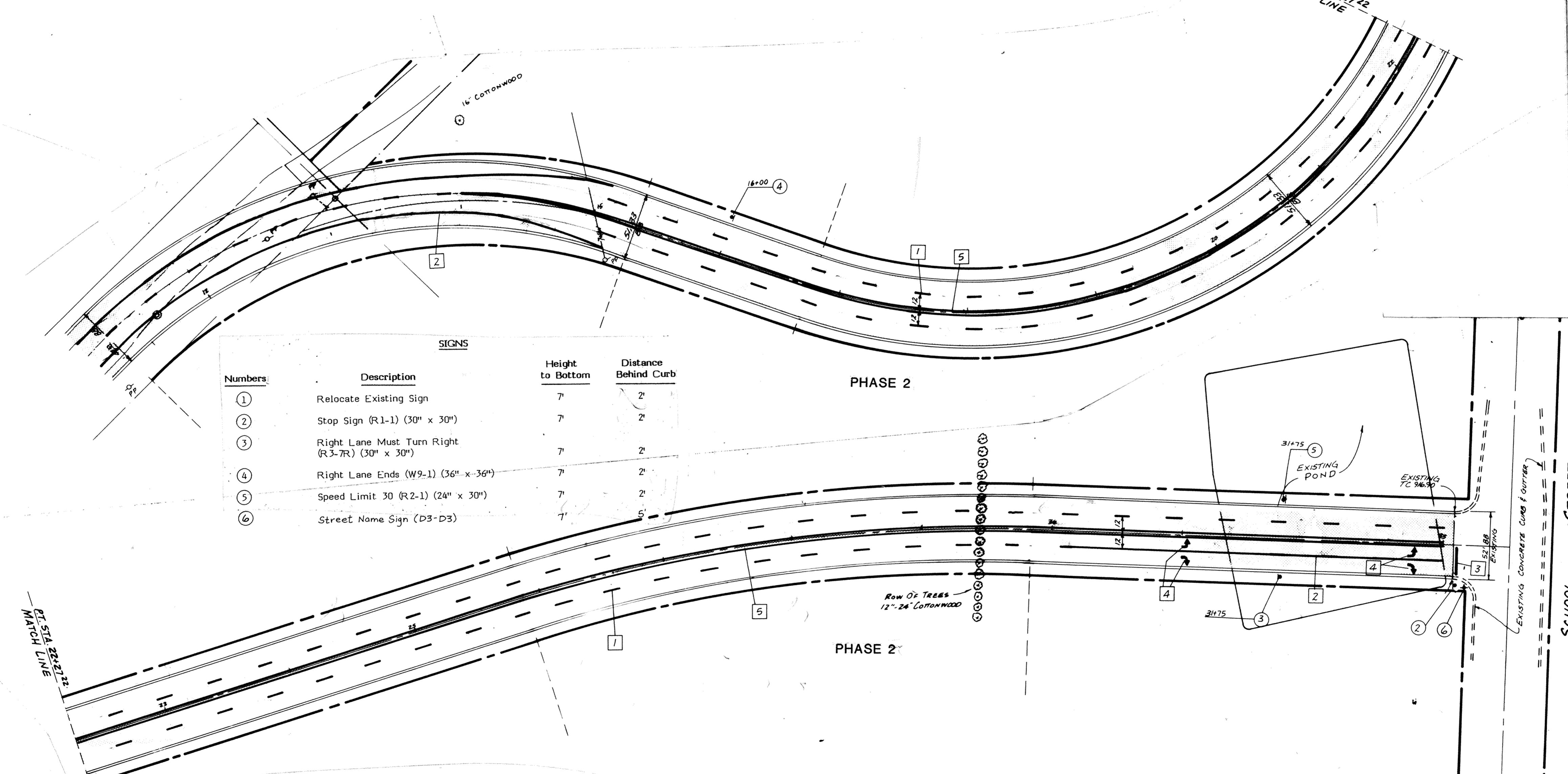
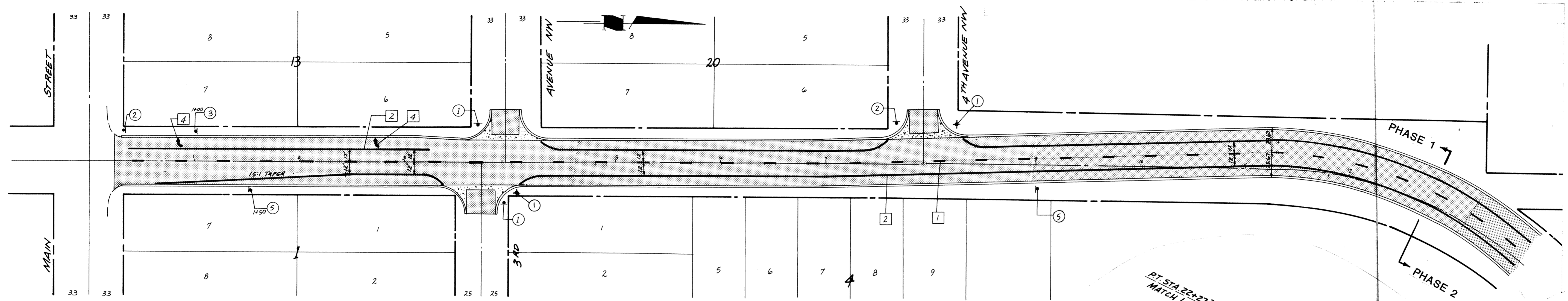


S&CO PRODUCTS • NEW HOPE, MINNESOTA
REGISTERED BY PART NUMBER 0533
S&CO PRODUCTS • NEW HOPE, MINNESOTA
REGISTERED BY PART NUMBER 0533
S&CO PRODUCTS • NEW HOPE, MINNESOTA
REGISTERED BY PART NUMBER 0533
S&CO PRODUCTS • NEW HOPE, MINNESOTA
REGISTERED BY PART NUMBER 0533



SIGNS

Numbers	Description	Height to Bottom	Distance Behind Curb
①	Relocate Existing Sign	7'	2'
②	Stop Sign (R1-1) (30" x 30")	7'	2'
③	Right Lane Must Turn Right (R3-7R) (30" x 30")	7'	2'
④	Right Lane Ends (W9-1) (36" x 36")	7'	2'
⑤	Speed Limit 30 (R2-1) (24" x 30")	7'	2'
⑥	Street Name Sign (D3-D3)	7'	5'

STRIPING

Number	Description	Width	Color	Remarks
①	Centerline Stripes	4"	White	10' Line, 40' Gap
②	Lane Line	6"	White	Solid
③	Stop Line	18"	White	Solid
④	Arrow		White	6'-11" High
⑤	Double Line	4"	Yellow	Solid

AS-BUILT
 DRAWN BY: MRK Date 12-26-84
 CHECKED BY:
 INSPECTOR: JAH Date 2-1-85
 DESIGN ENGR: Date 2-1-85
 PARTY CHIEF: Date 2-1-85

I hereby certify that this plan, specification or report was prepared by me or under my direct supervision and that I am a duly Registered Professional Engineer under State of Minn. Statutes Sections 326.02 to 326.16.
 Kerry J. Maun
 Date 3/1/87 Minn. Reg. No. 15316

consulting engineers diversified inc. **ED**
 p.o. box j, 08800, minnesota 55369 • (612) 425-2181

DESIGNED BY: MRJ
 CHECKED BY: TOM
 DRAWN BY: MRJ

REVISIONS
 GATES AVE. FROM MAIN ST. TO 3RD AVE. NW.
 SCALE: HORIZ. 1"=50' VERT. _____
 CITY OF ELK RIVER
 SIGNING & STRIPING

DATE: FEB 1983 SHEET: 19 OF 27 SHEETS FILE NO.: ER311.02