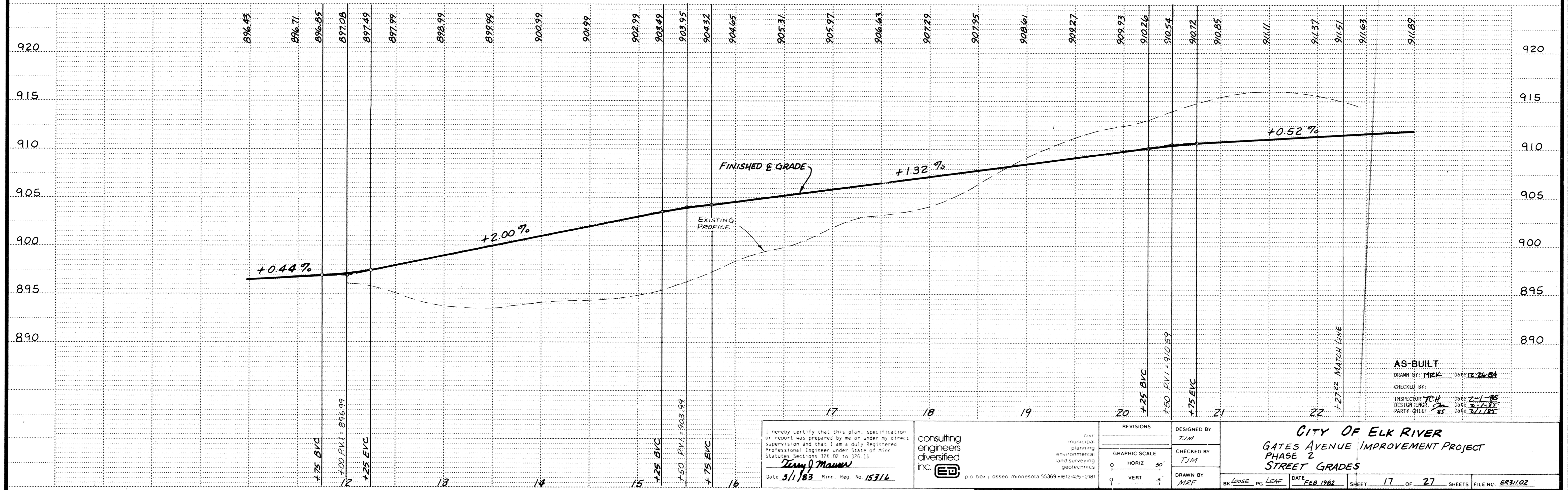


NOTE:
 DRIVEWAY APRON LOCATIONS SHALL BE
 DETERMINED BY THE ENGINEER IN THE FIELD.



I hereby certify that this plan, specification or report was prepared by me or under my direct supervision and that I am a duly Registered Professional Engineer under State of Minnesota Statutes Sections 326.02 to 326.16
 Terry J. Mauer
 Date: 3/1/83 Minn. Reg. No. 15316

consulting engineers diversified inc. p.o. box 1 osseo minnesota 55369 • 612-425-2181

REVISIONS	DESIGNED BY
	TJM
GRAPHIC SCALE	CHECKED BY
0 HORIZ 50'	TJM
0 VERT 5'	DRAWN BY
	MRF

CITY OF ELK RIVER
GATES AVENUE IMPROVEMENT PROJECT
PHASE 2
STREET GRADES

DATE: FEB. 1982 SHEET: 17 OF 27 SHEETS FILE NO.: ER31102

DRAWING NUMBER GATES 83 17