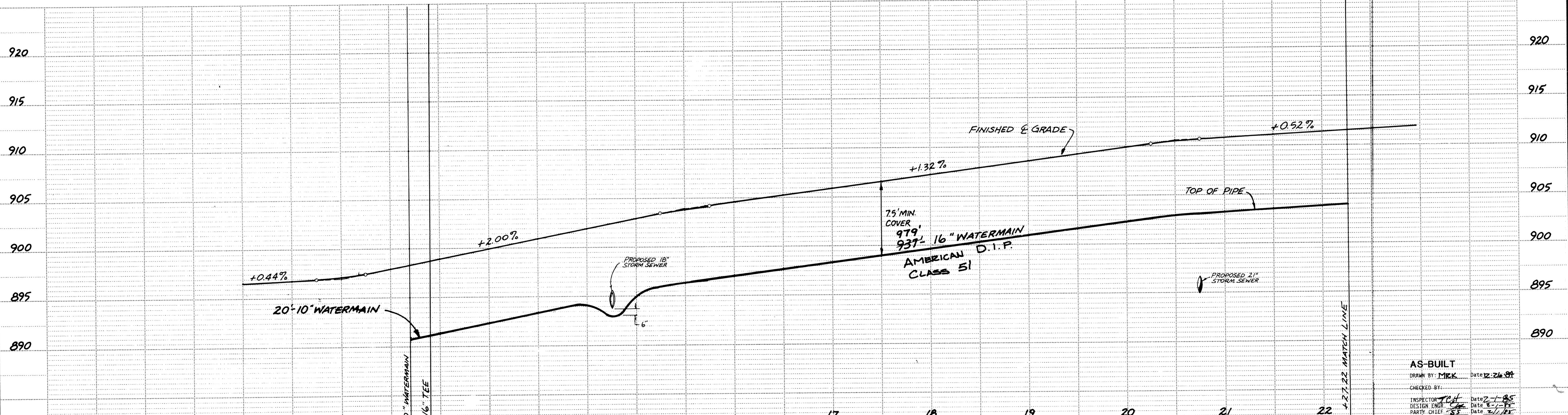
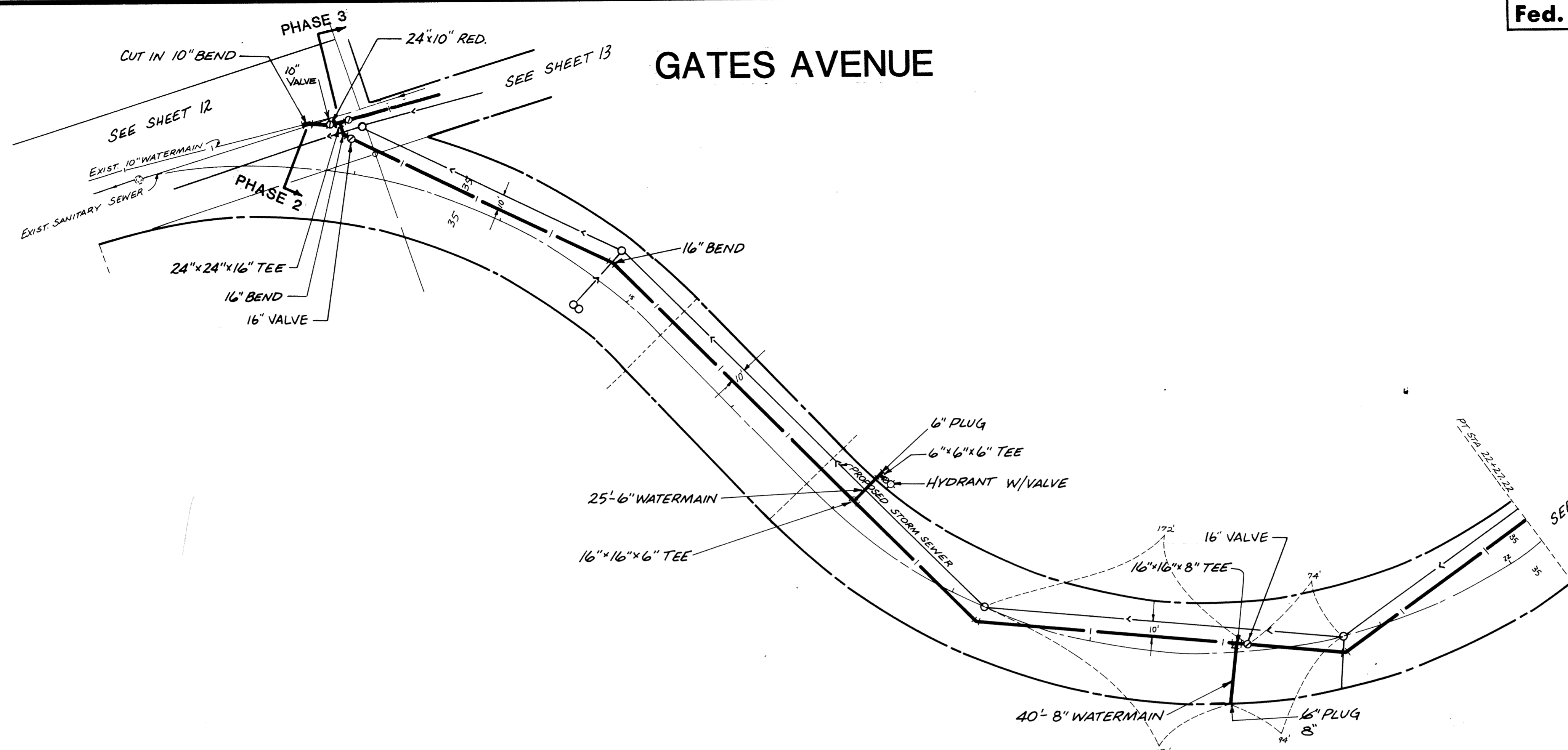


GATES AVENUE



AS-BUILT
 DRAWN BY: MEK Date: 12-26-89
 CHECKED BY: [Signature] Date: 1-1-90
 INSPECTOR: [Signature] Date: 1-1-90
 DESIGN ENGR: [Signature] Date: 1-1-90
 PARTY CHIEF: [Signature] Date: 1-1-90

I hereby certify that this plan, specification or report was prepared by me or under my direct supervision and that I am a duly Registered Professional Engineer under State of Minnesota Statutes Sections 326.02 to 326.16.
 Jerry J. Mauer
 Date: 4/27/83 Minn. Reg. No. 15316

consulting engineers diversified inc. ED
 600 box 1 Osseo Minnesota 55369 • 612-425-2181

REVISIONS		DESIGNED BY
		TJM
GRAPHIC SCALE		CHECKED BY
0	HORIZ 50'	TJM
0	VERT 5'	NRJ
DRAWN BY		DATE
NRJ		APRIL 1983

CITY OF ELK RIVER
 GATES AVENUE
 PHASE 2
 WATERMAIN
 BK LOOSE PG LEAK SHEET 14 OF 27 SHEETS FILE NO. ER402.02