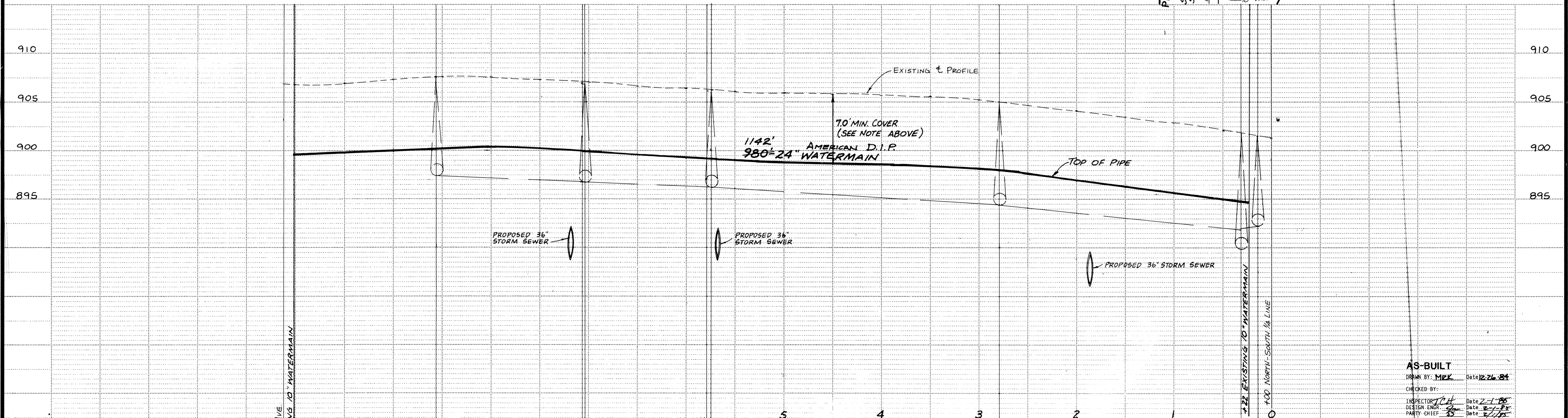
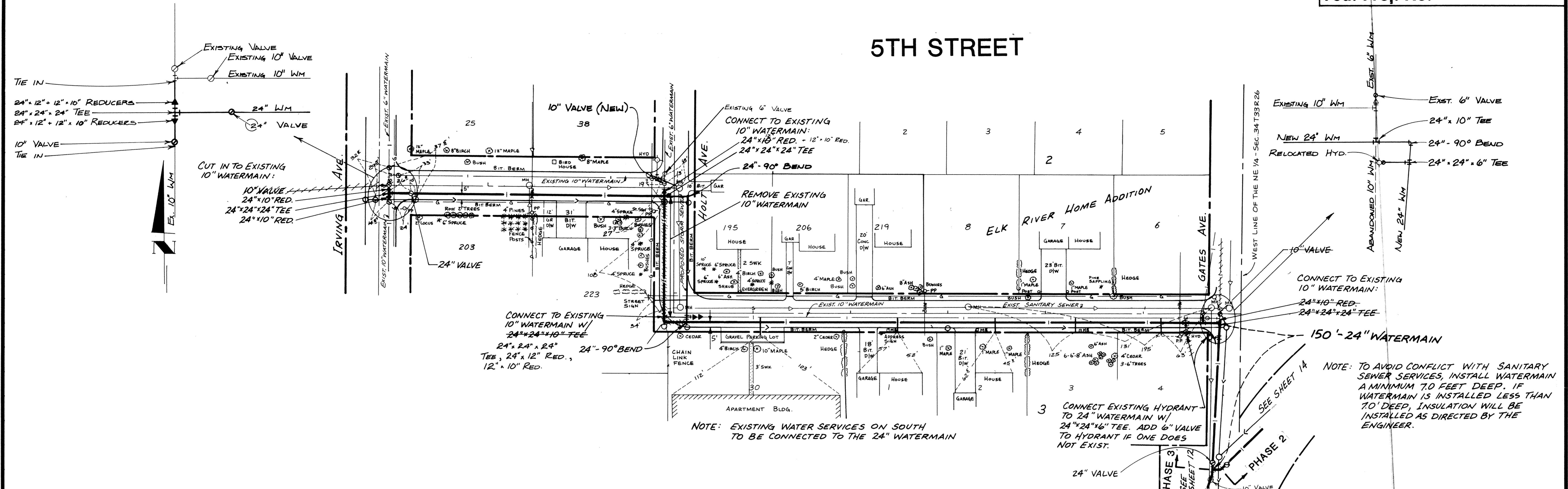


5TH STREET



NOTE: TO AVOID CONFLICT WITH SANITARY SEWER SERVICES, INSTALL WATERMAIN A MINIMUM 7.0 FEET DEEP. IF WATERMAIN IS INSTALLED LESS THAN 7.0' DEEP, INSULATION WILL BE INSTALLED AS DIRECTED BY THE ENGINEER.

NOTE: EXISTING WATER SERVICES ON SOUTH TO BE CONNECTED TO THE 24\"/>

CONNECT EXISTING HYDRANT TO 24\"/>

AS-BUILT
 DRAWN BY: MKK Date: 2/26/84
 CHECKED BY: [Signature] Date: 2/1/85
 DESIGN ENGR: [Signature] Date: 2/1/85
 PARTY CHIEF: [Signature] Date: 2/1/85

I hereby certify that this plan, specification or report was prepared by me or under my direct supervision and that I am a duly registered Professional Engineer under State of Minn. Stat. sections 124.02 to 124.16
 [Signature] Date: 4/2/83 Minn. Reg. No. 15316

consulting engineers diversified inc. [Logo] P.O. Box 10555, St. Paul, Minnesota 55136-0555

REVISIONS	

DESIGNED BY: TJM
 CHECKED BY: TJM
 DRAWN BY: MRJ

CITY OF ELK RIVER
 5TH STREET
 PHASE 3
 WATERMAIN
 DATE: 11-2-82 SHEET: 13 OF 27 SHEETS FILE NO: ER4-02.02

DRAWING NUMBER GATES:83 13