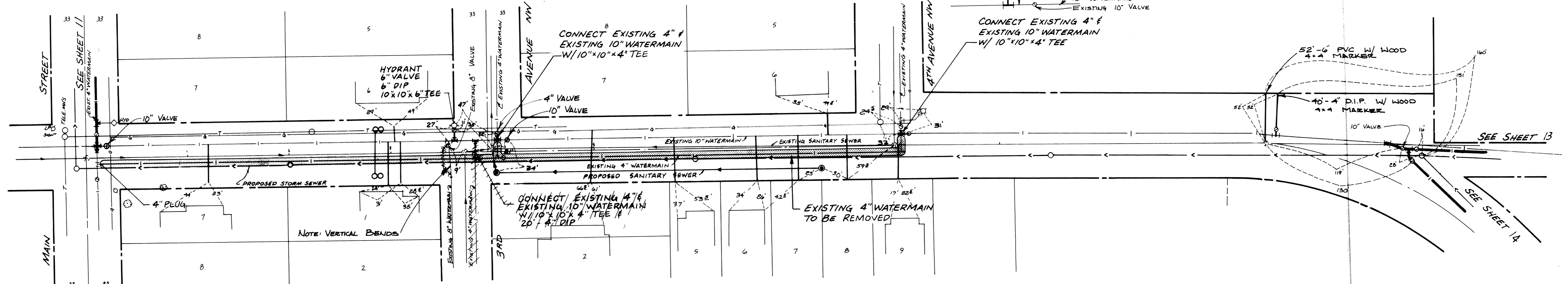
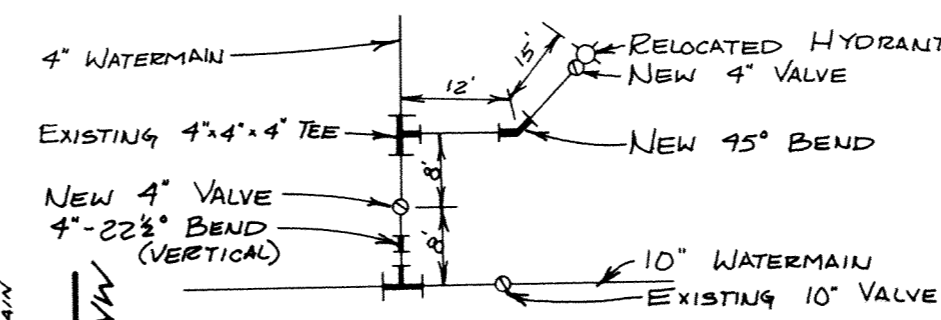


# GATES AVENUE

Fed. Proj. No.

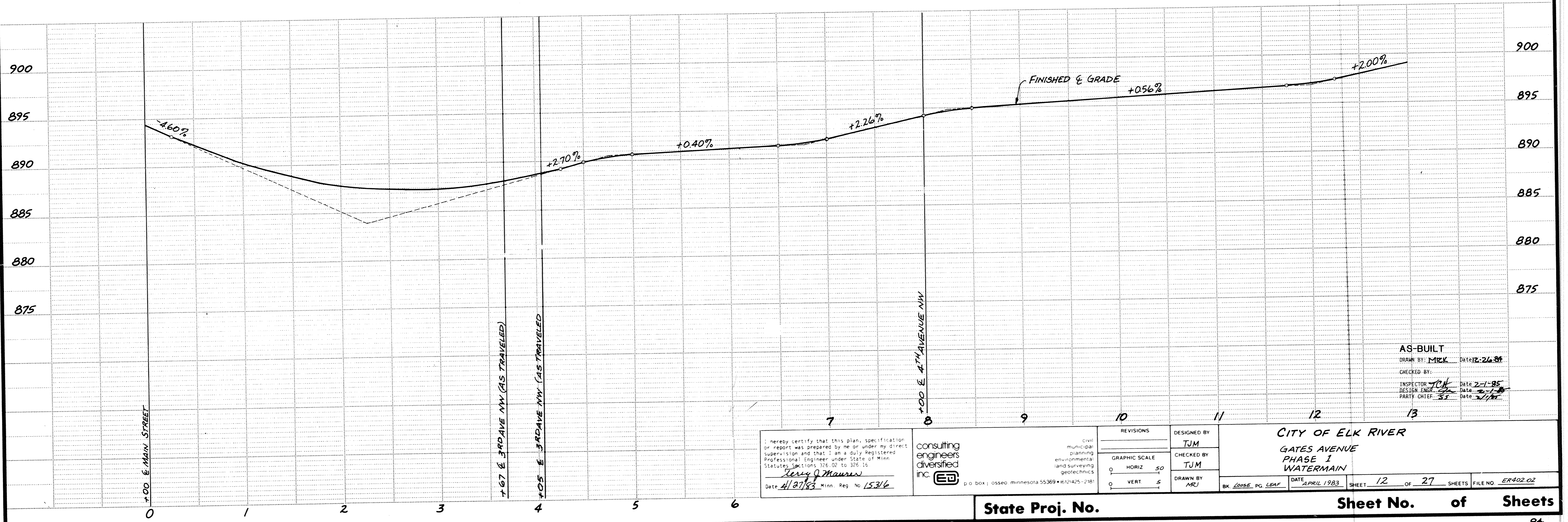
DIAGRAM OF RELOCATED HYDRANT



NOTE: TIES PERTAIN TO WATERMAIN CURB STOP

NOTE: FOR CLARITY PURPOSES, EXISTING TOPOGRAPHY HAS BEEN DELETED FROM THIS SHEET. SEE SHEET 5 FOR EXISTING TOPOGRAPHY.

EXISTING WATER SERVICES CONNECTED TO THE 4" WATERMAIN TO BE REMOVED ARE TO BE CONNECTED TO THE EXISTING 10"



AS-BUILT  
 DRAWN BY: MCK Date: 12-26-84  
 CHECKED BY:  
 INSPECTOR: JCH Date: 2-1-85  
 DESIGN ENGR: Date: 1-1-85  
 PARTY CHIEF: SS Date: 2/1/85

I hereby certify that this plan, specification or report was prepared by me or under my direct supervision and that I am a duly Registered Professional Engineer under State of Minn. Statutes Sections 326.02 to 326.16 <b>Terry J. Maurer</b> Date: 4/13/83 Minn. Reg. No. 15316	consulting engineers diversified inc. civil municipal planning environmental land surveying geotechnics p.o. box 1 osseo minnesota 55369 • (612) 425-2181	DESIGNED BY <b>TJM</b>	CITY OF ELK RIVER GATES AVENUE PHASE I WATERMAIN
		CHECKED BY <b>TJM</b>	
REVISIONS GRAPHIC SCALE 0 HORIZ 50 0 VERT 5		DRAWN BY <b>MRJ</b>	SHEET 12 OF 27 SHEETS FILE NO. ER402.02

State Proj. No.

Sheet No. of Sheets

84

DRAWING NUMBER

DRAWING NUMBER

DRAWING NUMBER

DRAWING NUMBER

12

GATES.83