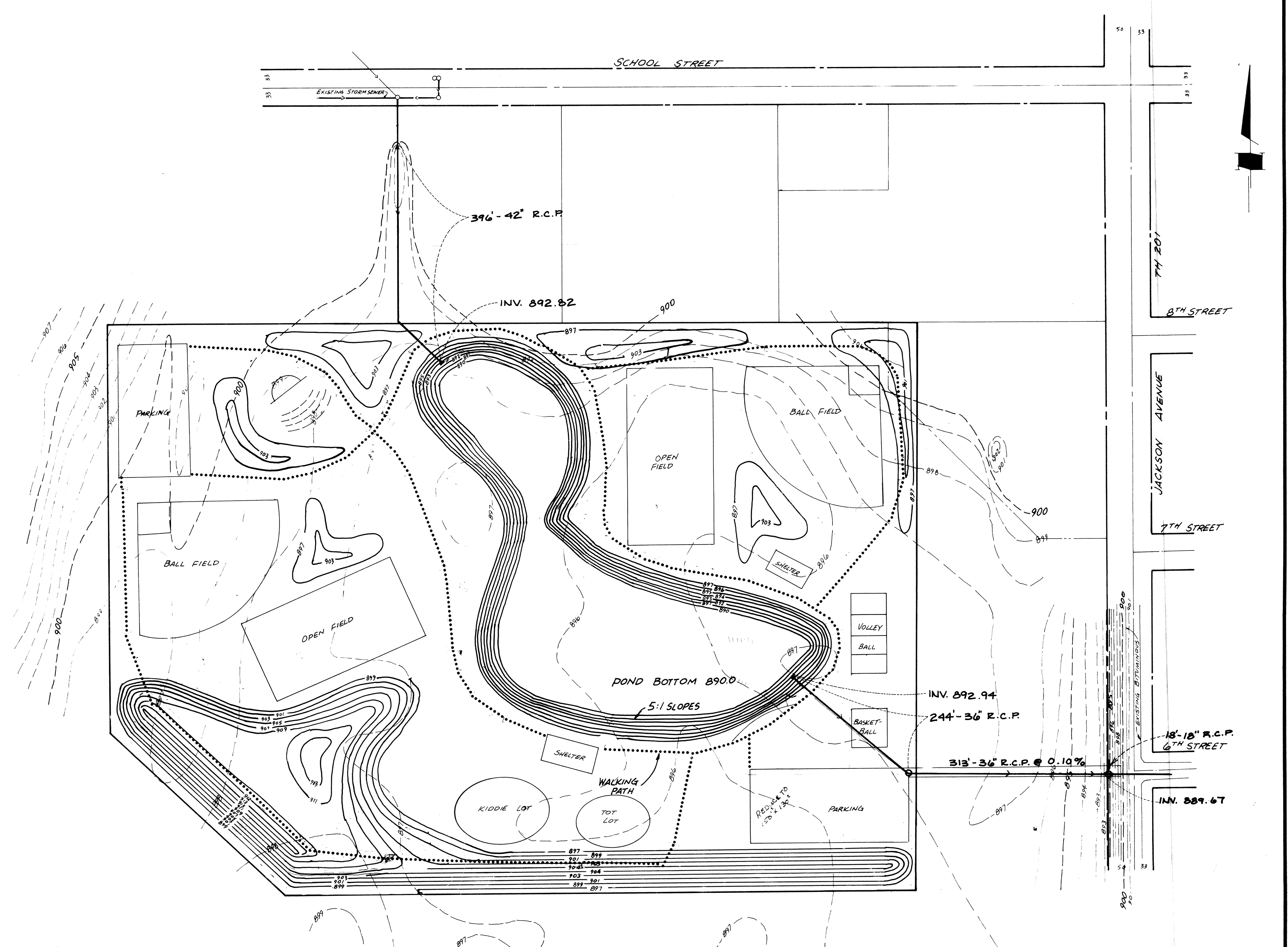



SAFECO PRODUCTS • NEW HOPE, MINNESOTA  
REGISTERED BY PART NUMBER 0233

SAFECO PRODUCTS • NEW HOPE, MINNESOTA  
REGISTERED BY PART NUMBER 0233

SAFECO PRODUCTS • NEW HOPE, MINNESOTA  
REGISTERED BY PART NUMBER 0233

SAFECO PRODUCTS • NEW HOPE, MINNESOTA  
REGISTERED BY PART NUMBER 0233



I hereby certify that this plan, specification or report was prepared by me or under my direct supervision and that I am a duly Registered Professional Engineer under State of Minn. Statutes Sections 326.02 to 326.16. Date _____ Minn. Reg. No. _____	consulting engineers diversified inc  p.o. box 108, seaso, minnesota 55369 • (612) 425-2181	REVISIONS 12/1/83 200 1/3/84 200 11/2/84	DESIGNED BY TJM	CITY OF ELK RIVER PARK LAYOUT			
		SCALE HORIZ. 1" = 100' VERT. _____	CHECKED BY TJM			DRAWN BY MRJ	
			BK. LOOSE PG. LEAF	DATE DEC 1983	SHEET 10A OF 27	SHEETS	FILE NO. ER402.02