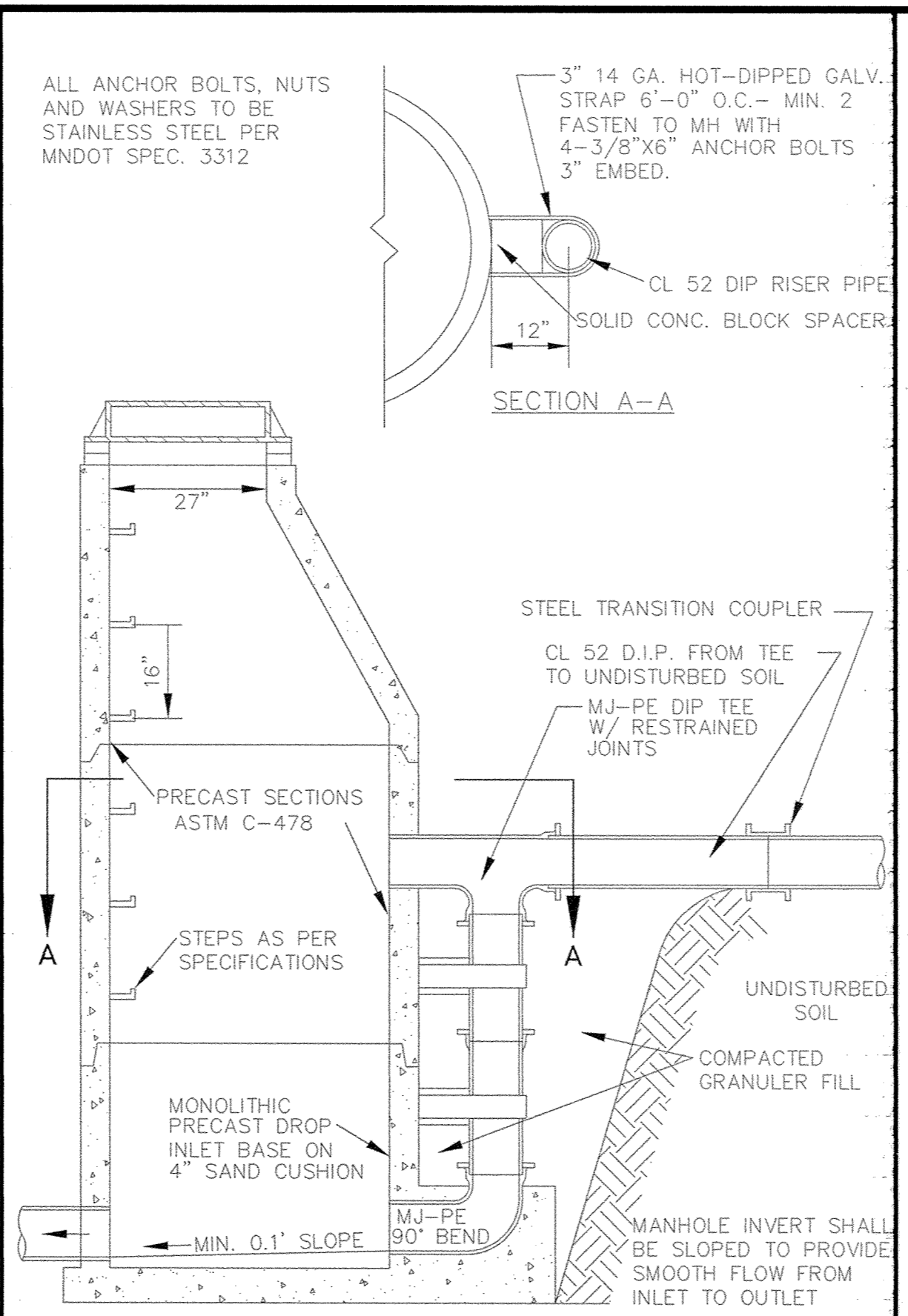
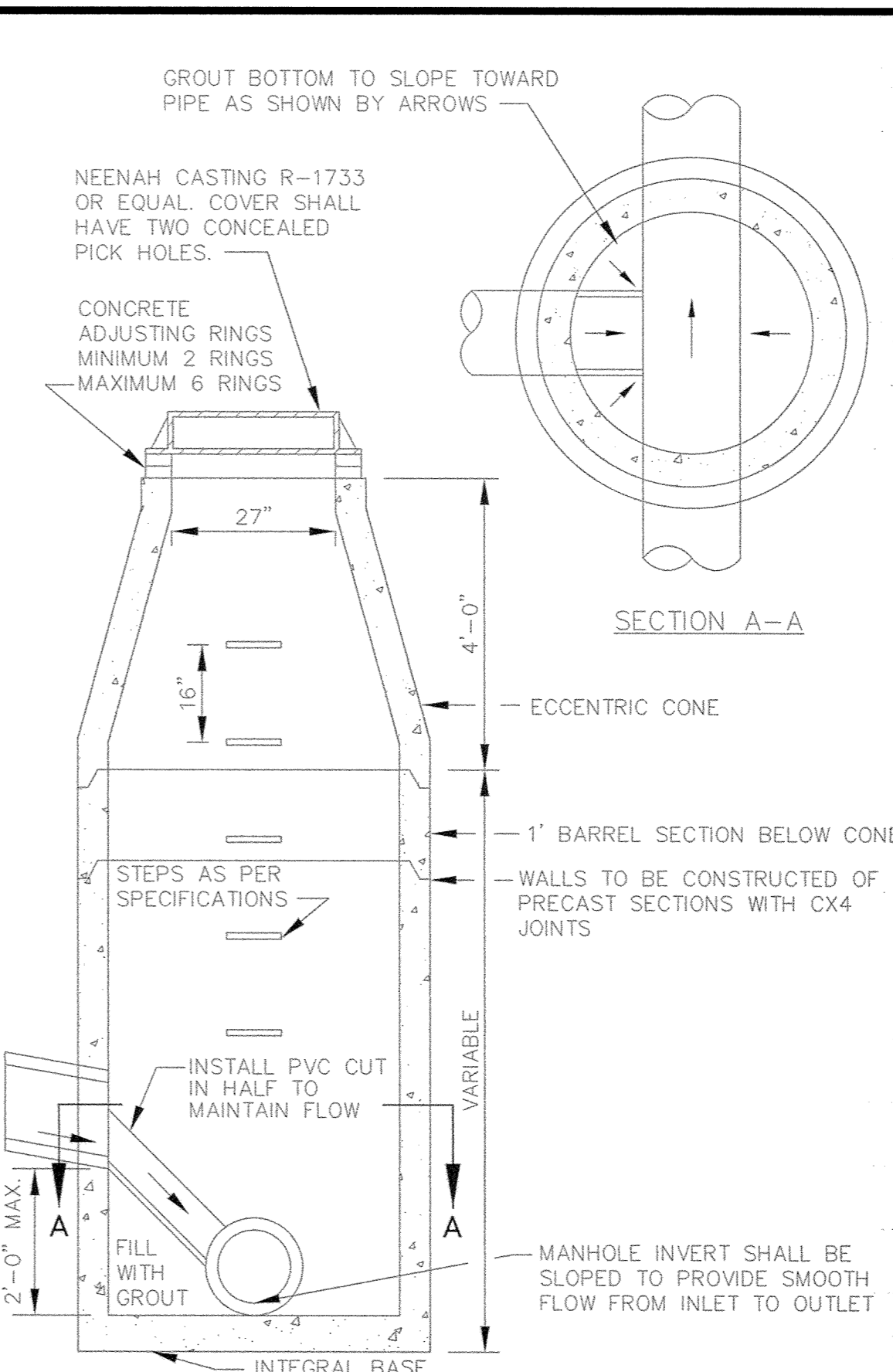


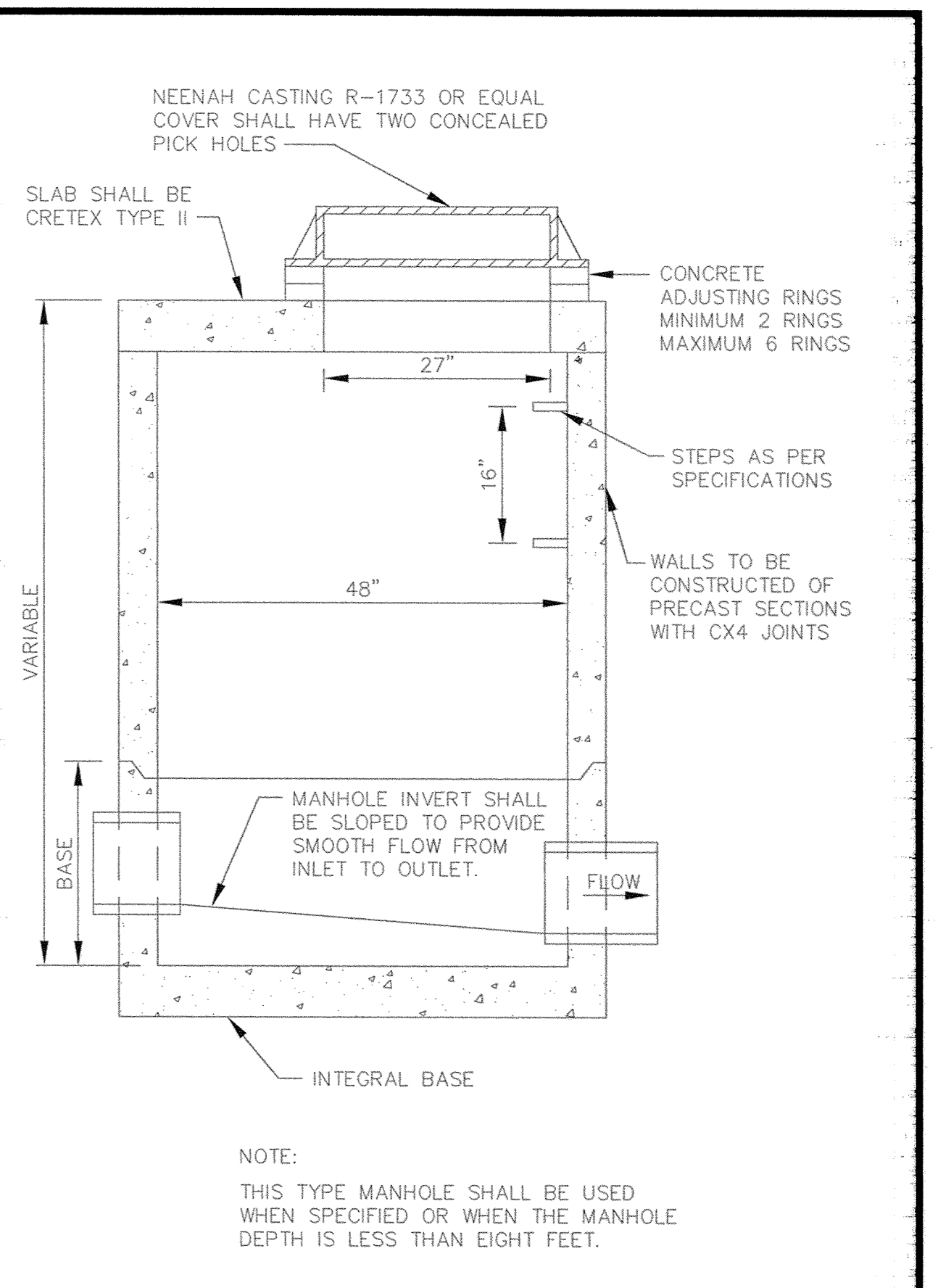
STANDARD AIR RELIEF MANHOLE



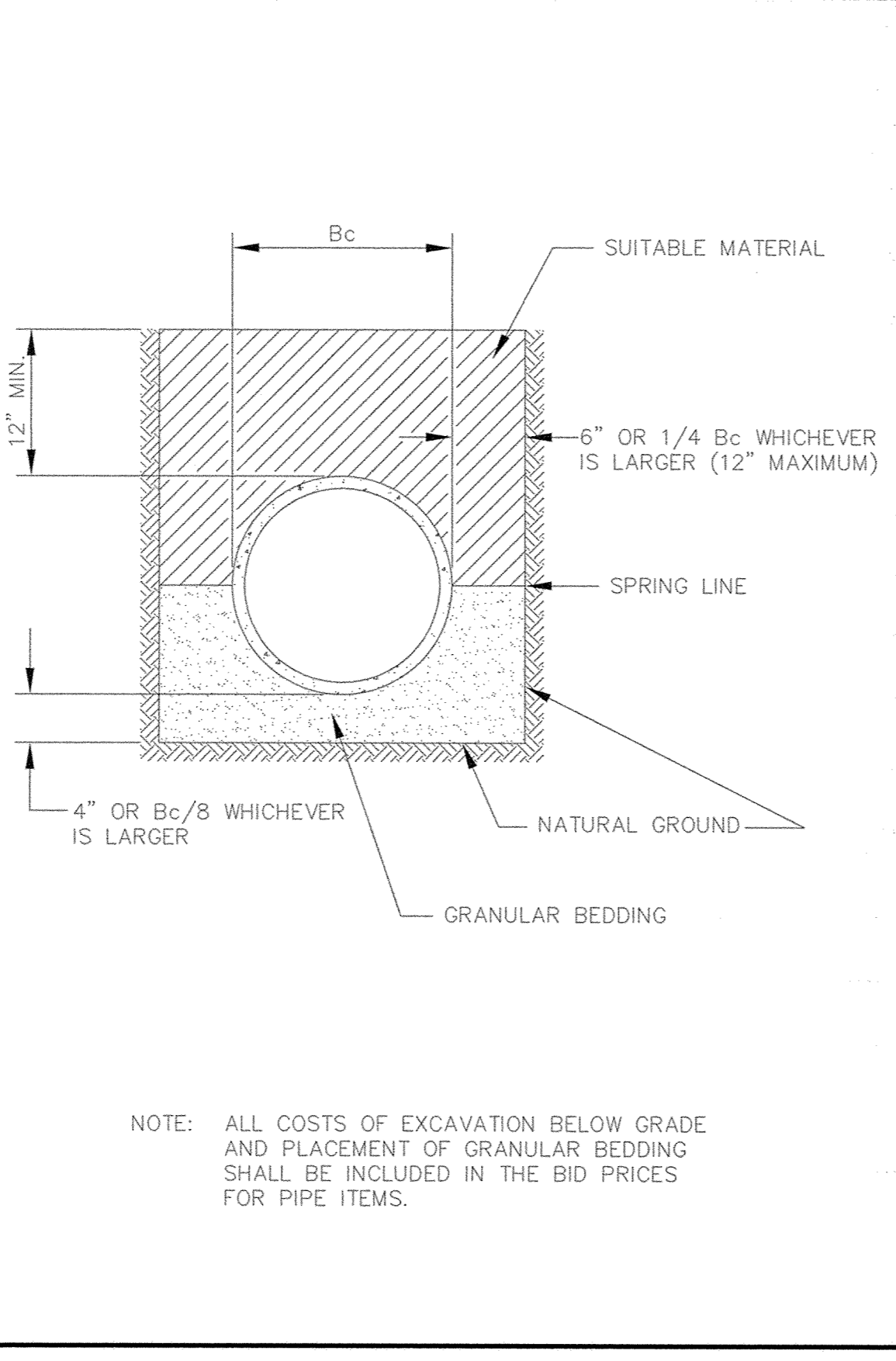
OUTSIDE DROP MANHOLE



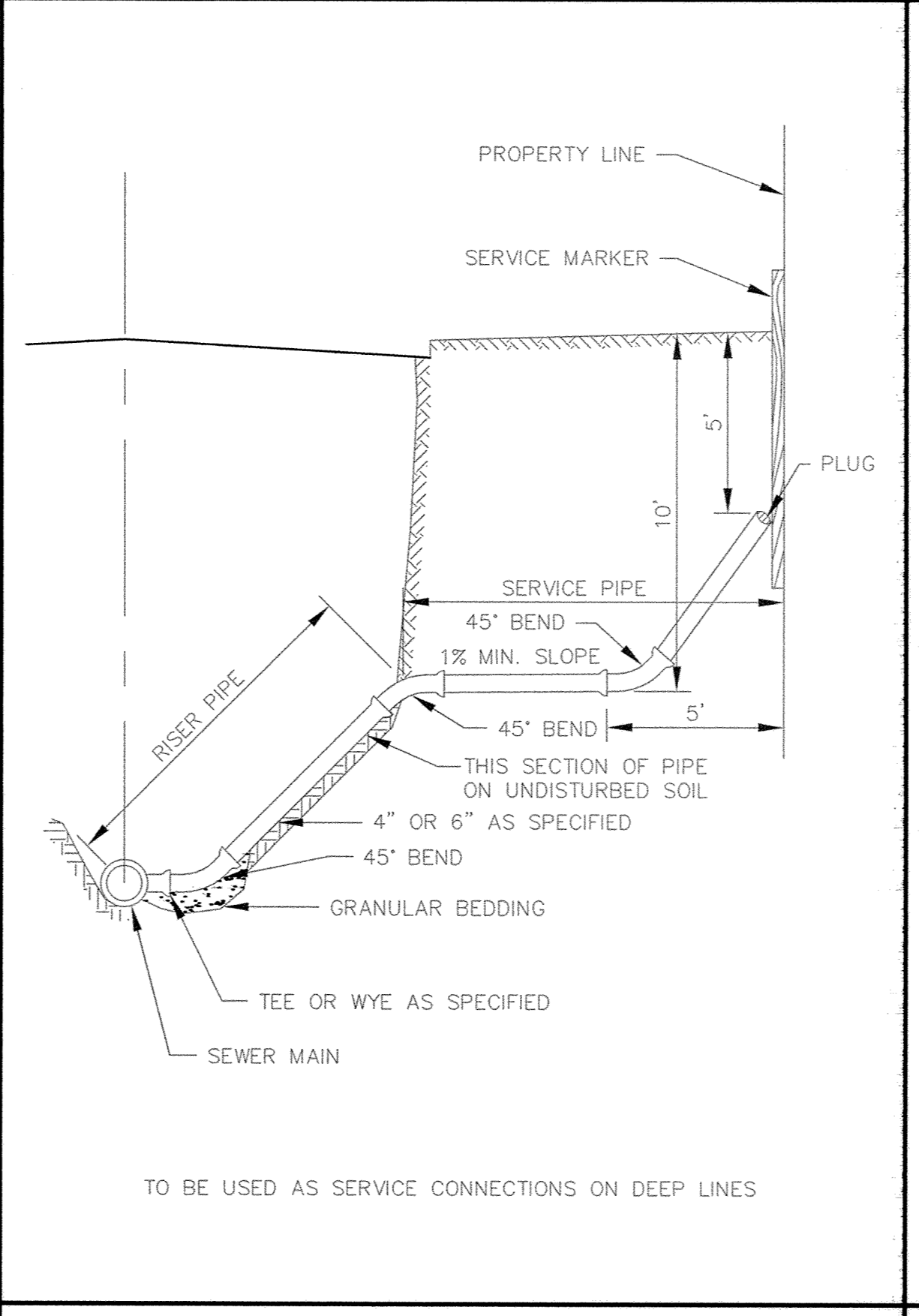
INSIDE DROP MANHOLE (TWO FEET OR LESS)



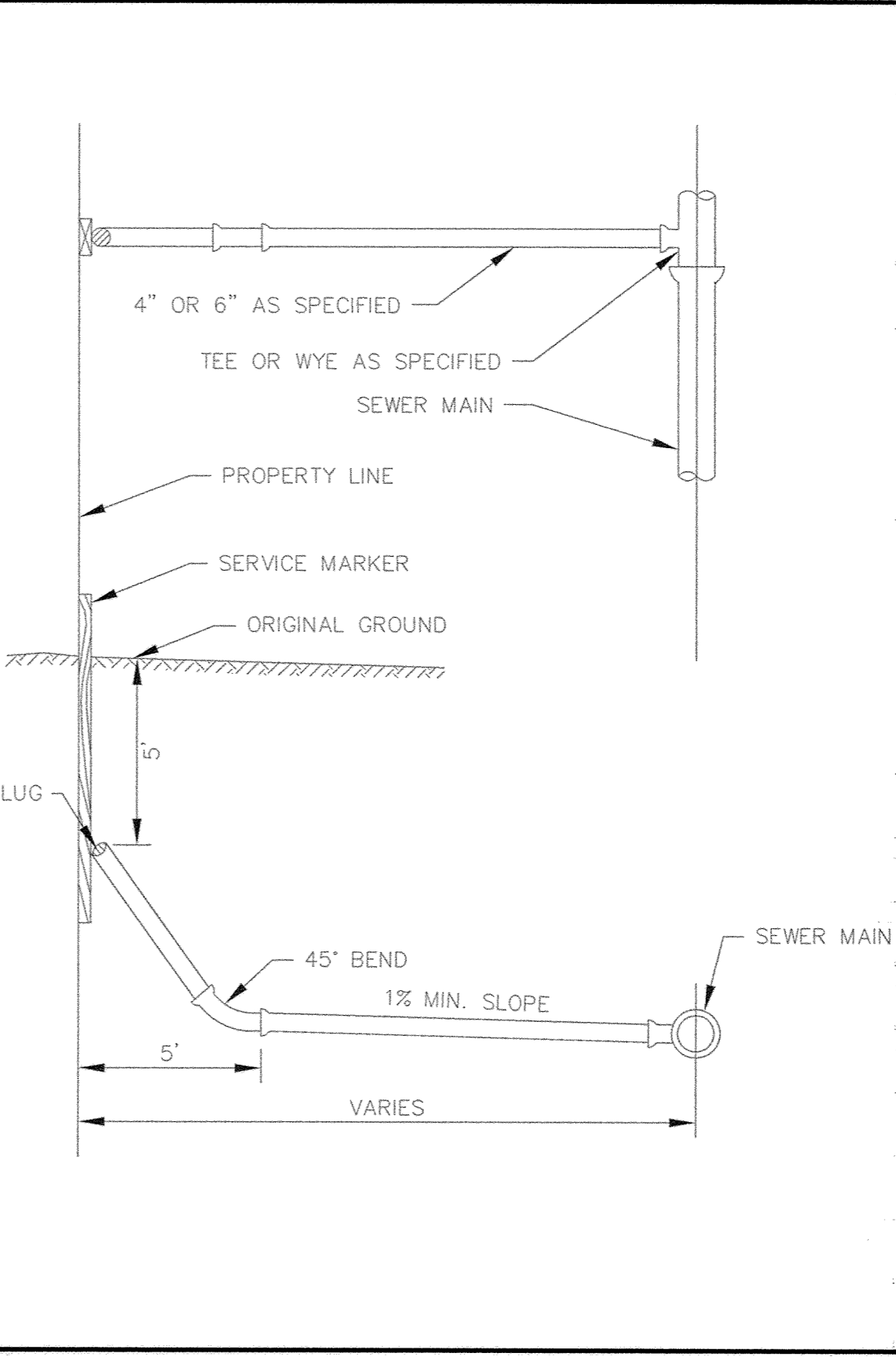
SLAB TOP MANHOLE



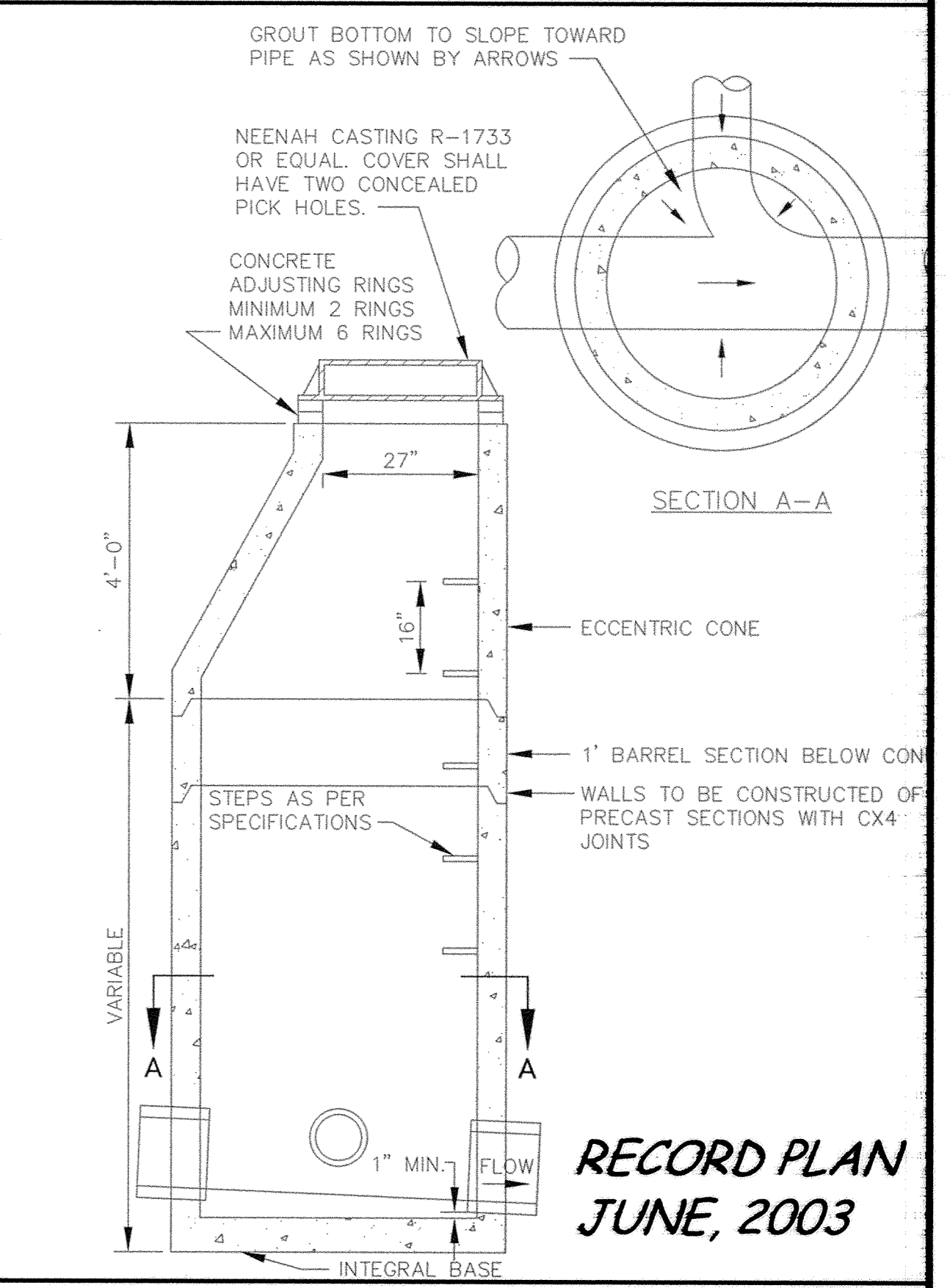
CLASS B PIPE BEDDING



SERVICE RISER SECTION



TYPICAL HOUSE SERVICE



STANDARD MANHOLE

DESIGNED BY: _____ DRAWN BY: LK
 APPROVED BY: _____ JOB NUMBER 810641J
 CAD DATE: January 24, 2005 2:01:43 p.m.
 CAD FILE: 810641J\asbuiits\810641-D1A.DWG (JCUNNIN)

I HEREBY CERTIFY THAT THIS PLAN, SPECIFICATION, OR REPORT WAS PREPARED BY ME OR UNDER MY DIRECT SUPERVISION AND THAT I AM A DULY LICENSED PROFESSIONAL ENGINEER UNDER THE LAWS OF THE STATE OF MINNESOTA.
 SIGNATURE _____ DATE _____
 PRINTED NAME JOHN M. BENNER LIC. NO. 25889

NO.	DATE	BY	REVISION DESCRIPTION

1326 ENERGY PARK DRIVE
 ST. PAUL, MINNESOTA 55108
 (612) 644-4389
Howard R. Green Company
 CONSULTING ENGINEERS

FOX HAVEN
 CITY OF ELK RIVER

SANITARY SEWER DETAILS

SHEET NO.
D1

RECORD PLAN
JUNE, 2003