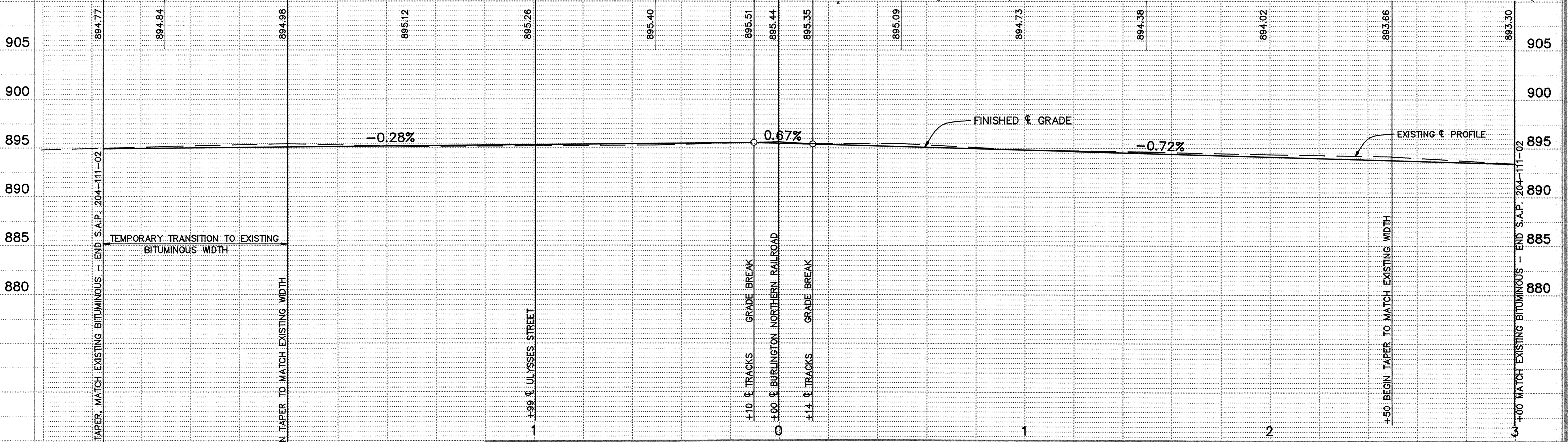
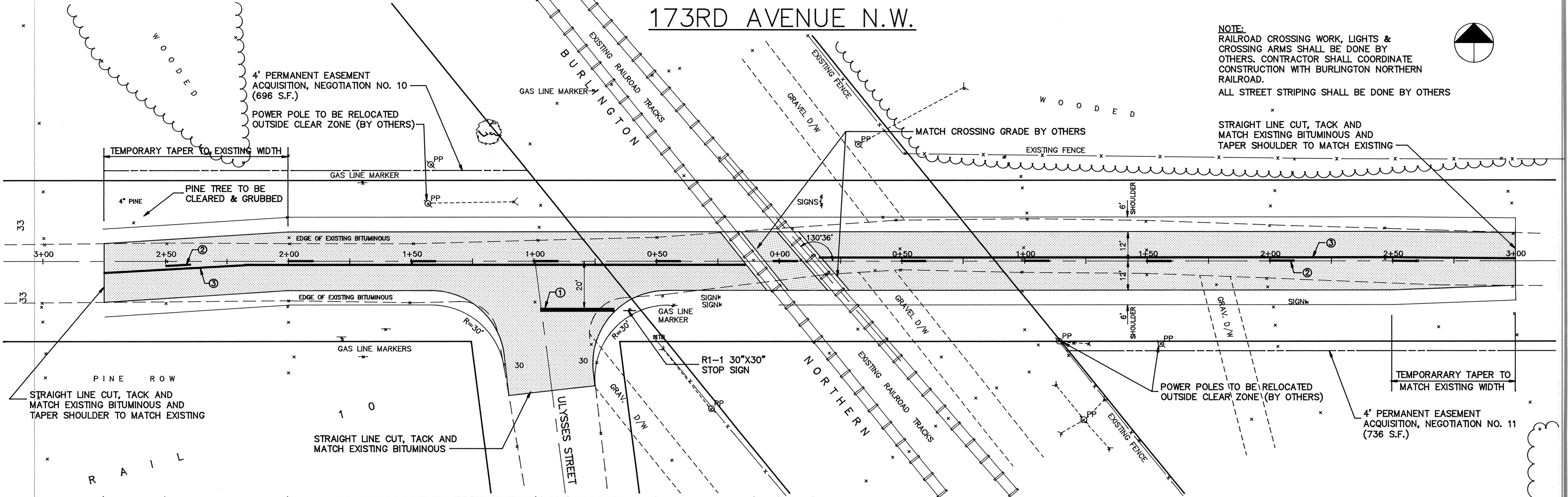
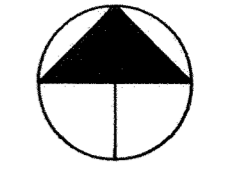


173RD AVENUE N.W.

NOTE:
RAILROAD CROSSING WORK, LIGHTS & CROSSING ARMS SHALL BE DONE BY OTHERS. CONTRACTOR SHALL COORDINATE CONSTRUCTION WITH BURLINGTON NORTHERN RAILROAD.
ALL STREET STRIPING SHALL BE DONE BY OTHERS



I HEREBY CERTIFY THAT THIS PLAN, SPECIFICATION, OR REPORT WAS PREPARED BY ME OR UNDER MY DIRECT SUPERVISION AND THAT I AM A DULY REGISTERED PROFESSIONAL ENGINEER UNDER THE LAWS OF THE STATE OF MINNESOTA.
Mark V. Gushen
DATE 3/29/90 REG. NO. 19130

MSA CONSULTING ENGINEERS
Maier Stewart & Associates Inc.
1959 SLOAN PLACE (612)774-6021 ST. PAUL, MINNESOTA 55117

REVISIONS	DATE	DESCRIPTION	DESIGNED <u>MJG</u>	CHECKED <u>JEJ</u>	DRAWN <u>GG</u>

GRAPHIC SCALE
0 HORIZ. 20
0 VERT. 5

CITY OF ELK RIVER
RAILROAD CROSSING IMPROVEMENTS
173RD AVENUE N.W.
S.A.P. 204-111-02

DATE MAR. 1991 SHEET 16 OF 18 SHEETS PROJECT NO. 230-110