

CITY OF ELK RIVER

SECTION 2, T33N, R26W RAILROAD CROSSING IMPROVEMENTS 173rd AVENUE

M.S.A.S. S.A.P. 204-III-02

PLAN SYMBOLS

- SECTION LINE
- QUARTER LINE
- SIXTEENTH LINE
- RIGHT OF WAY LINE
- PROPERTY LINE
- CENTER LINE
- FENCE LINE
- RIVER OR CREEK
- LAKE OR POND
- CULVERT
- BRIDGE
- RETAINING WALL

- TREES
- BRUSH OR SHRUBS
- HEDGE
- CONIFERS
- SWAMP
- MAILBOX
- SIGN

UTILITIES SYMBOLS

- SANITARY SEWER
- STORM SEWER
- WATERMAIN
- GAS LINE
- POWER LINE
- MANHOLE
- CATCH BASIN
- VALVE

- HYDRANT
- POWER, TELEPHONE, OR LIGHT POLE
- ANCHOR
- SOIL BORING LOCATION

FUNCTIONAL CLASSIFICATION LOCAL COLLECTOR

PRESENT ADT (YEAR) 535 (1987) PROJ. ADT (YEAR) 798 (2007)

SHOULDER WIDTH 6 FT.

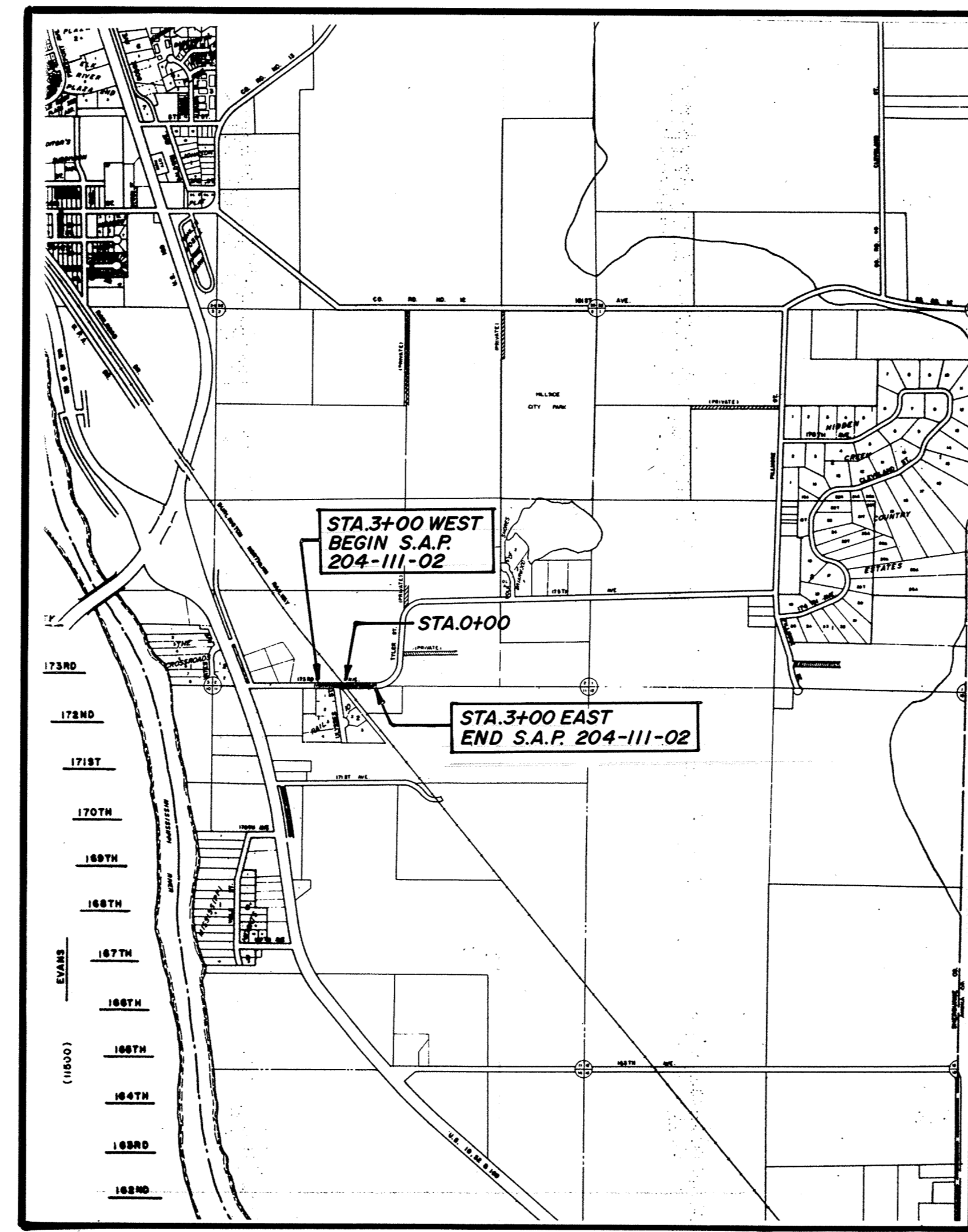
9 TON TON DESIGN

SOIL FACTOR 75 PROJ. HCA DT (YEAR) <150 (2007)

R-VALUE NA N OR 18 FACTOR NA

DESIGN SPEED 45 MPH
DESIGN SPEED NOT ACHIEVED AT:
STA. _____ TO STA. _____ MPH

STOPPING SITE DISTANCE BASED ON:
3.5' HEIGHT OF EYE
0.5' HEIGHT OF OBJECT



BURLINGTON NORTHERN RAILROAD CROSSING			
GROSS LENGTH	600 FEET	0.11 MILES	
BRIDGES LENGTH	FEET	MILES	
EXCEPTION LENGTH	FEET	MILES	
NET LENGTH	600 FEET	0.11 MILES	

PLAN 1" = 20'

SCALES: PROFILE HOR. 1" = 20'
VERT. 1" = 5'

CROSS SECTIONS HOR. 1" = 10'
VERT. 1" = 5'

INDEX OF SHEETS

- 14 TITLE SHEET & LAYOUT MAP
- 15 EST. QUANTITY, STREET SECTIONS & NOTES
- 16 PLAN & PROFILE
- 17 CROSS SECTION
- 18 STREET DETAILS

I HEREBY CERTIFY THAT THIS PLAN, SPECIFICATION, OR REPORT WAS PREPARED BY ME OR UNDER MY DIRECT SUPERVISION AND THAT I AM A DULY REGISTERED PROFESSIONAL ENGINEER UNDER THE LAWS OF THE STATE OF MINNESOTA.

Mark V. Graham
DATE 3/29/91 REG. NO. 19130

APPROVED *Terry Moun* CITY ENGINEER 4/19/91 DATE

RECOMMENDED FOR APPROVAL *Art O'Keefe* DISTRICT STATE AID ENGINEER 4-9-91 DATE

RECOMMENDED FOR APPROVAL *Julia Skallman* STATE PLANS & SPEC. ENGINEER 4/19/91 DATE

APPROVED *Dennis C. Carlson* STATE AID DIRECTOR 4-19-91 DATE

PREPARED BY:
 CONSULTING ENGINEERS
Maier Stewart & Associates Inc.

THE 1988 EDITION OF THE MINNESOTA DEPARTMENT OF TRANSPORTATION "STANDARD SPECIFICATIONS FOR CONSTRUCTION" SHALL GOVERN.