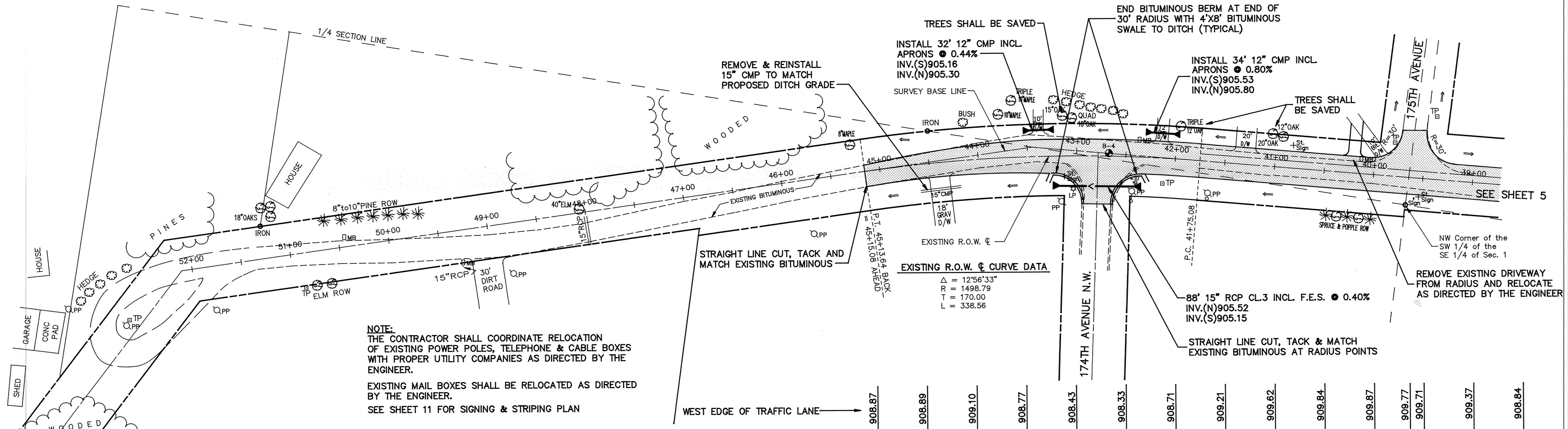
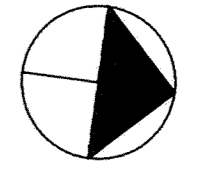
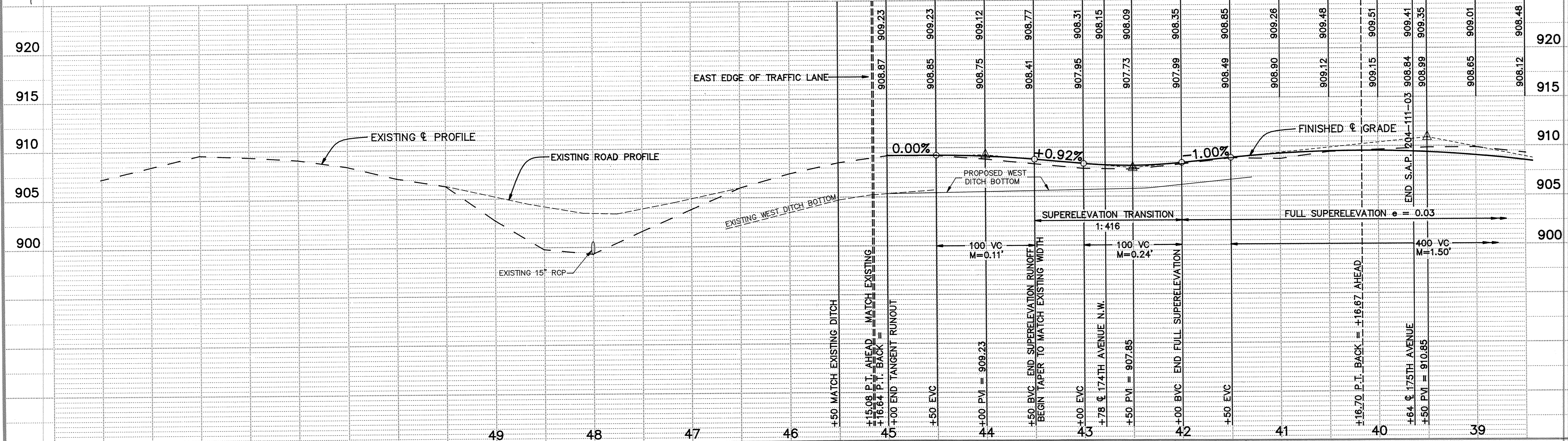


# FILLMORE STREET



**NOTE:**  
 THE CONTRACTOR SHALL COORDINATE RELOCATION OF EXISTING POWER POLES, TELEPHONE & CABLE BOXES WITH PROPER UTILITY COMPANIES AS DIRECTED BY THE ENGINEER.  
 EXISTING MAIL BOXES SHALL BE RELOCATED AS DIRECTED BY THE ENGINEER.  
 SEE SHEET 11 FOR SIGNING & STRIPING PLAN



**MS&A** CONSULTING ENGINEERS  
 Maier Stewart & Associates Inc.  
 1959 SLOAN PLACE (612)774-6021 ST. PAUL, MINNESOTA 55117

| DATE      | DESCRIPTION | DESIGNED      | GG  |
|-----------|-------------|---------------|-----|
|           |             | CHECKED       | JEJ |
|           |             | DRAWN         | GG  |
| REVISIONS |             | GRAPHIC SCALE |     |
|           |             | 0 HORIZ. 50   |     |
|           |             | 0 VERT. 5     |     |

**CITY OF ELK RIVER**  
 S.A.P. 204-111-03  
 STREET IMPROVEMENTS  
 FILLMORE STREET

DATE MAR. 1991 SHEET 6 OF 18 SHEETS PROJECT NO. 230-056

DRAWING NUMBER  
 FILLMORE STREET  
 CITY OF ELK RIVER, MINNESOTA  
 PROJECT NO. 230-056  
 SHEET 6 OF 18  
 DATE MAR. 1991