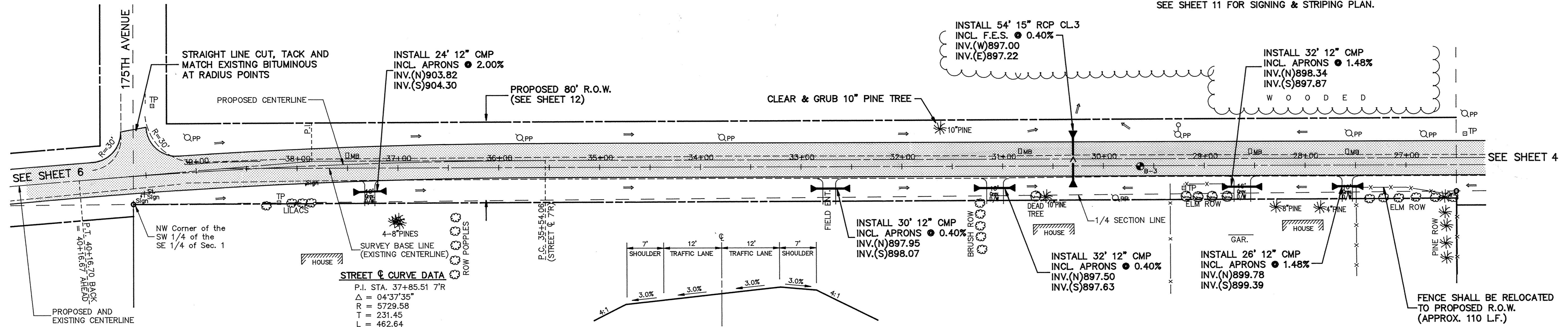
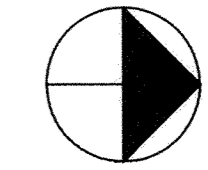
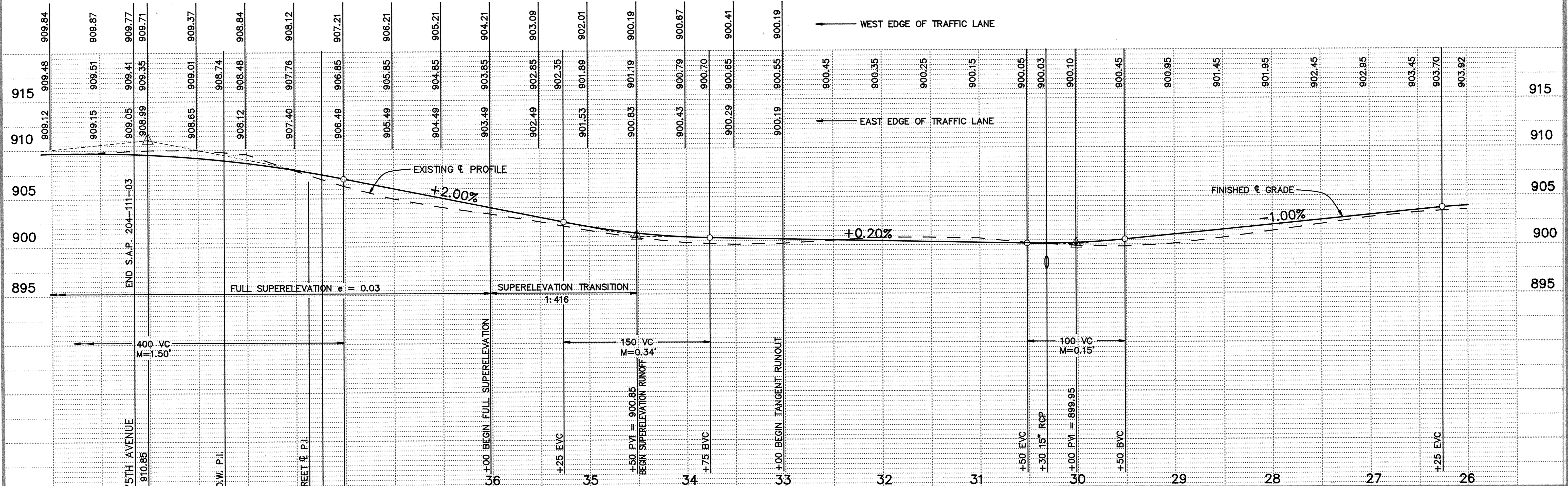


FILLMORE STREET

NOTE:
 THE CONTRACTOR SHALL COORDINATE RELOCATION OF EXISTING POWER POLES, TELEPHONE & CABLE BOXES WITH PROPER UTILITY COMPANIES TO PROVIDE THE REQ'D OBSTRUCTION FREE CLEAR ZONE AS SHOWN ON THE TYPICAL STREET SECTION, SHEET 2.
 EXISTING MAIL BOXES SHALL BE RELOCATED AS DIRECTED BY THE ENGINEER.
 SEE SHEET 11 FOR SIGNING & STRIPING PLAN.



TYPICAL SECTION IN FULL SUPERELEVATION
NO SCALE



I HEREBY CERTIFY THAT THIS PLAN, SPECIFICATION, OR REPORT WAS PREPARED BY ME OR UNDER MY DIRECT SUPERVISION AND THAT I AM A DULY REGISTERED PROFESSIONAL ENGINEER UNDER THE LAWS OF THE STATE OF MINNESOTA.
Mark J. Graham
 DATE 3/29/91 REG. NO. 19130

MS&A CONSULTING ENGINEERS
 Maier Stewart & Associates Inc.
 1959 SLOAN PLACE (612) 774-6021 ST. PAUL, MINNESOTA 55117

DATE	DESCRIPTION	DESIGNED	CHECKED	DRAWN
		GG	JEJ	GG

GRAPHIC SCALE
 HORIZ. 50
 VERT. 5

CITY OF ELK RIVER
 S.A.P. 204-111-03
 STREET IMPROVEMENTS
 FILLMORE STREET

DATE JULY, 1988 SHEET 5 OF 18 SHEETS PROJECT NO. 230-056

DRAWING NUMBER
 DRAWING NUMBER
 DRAWING NUMBER
 DRAWING NUMBER
 FILM 91
 DRAWING NUMBER