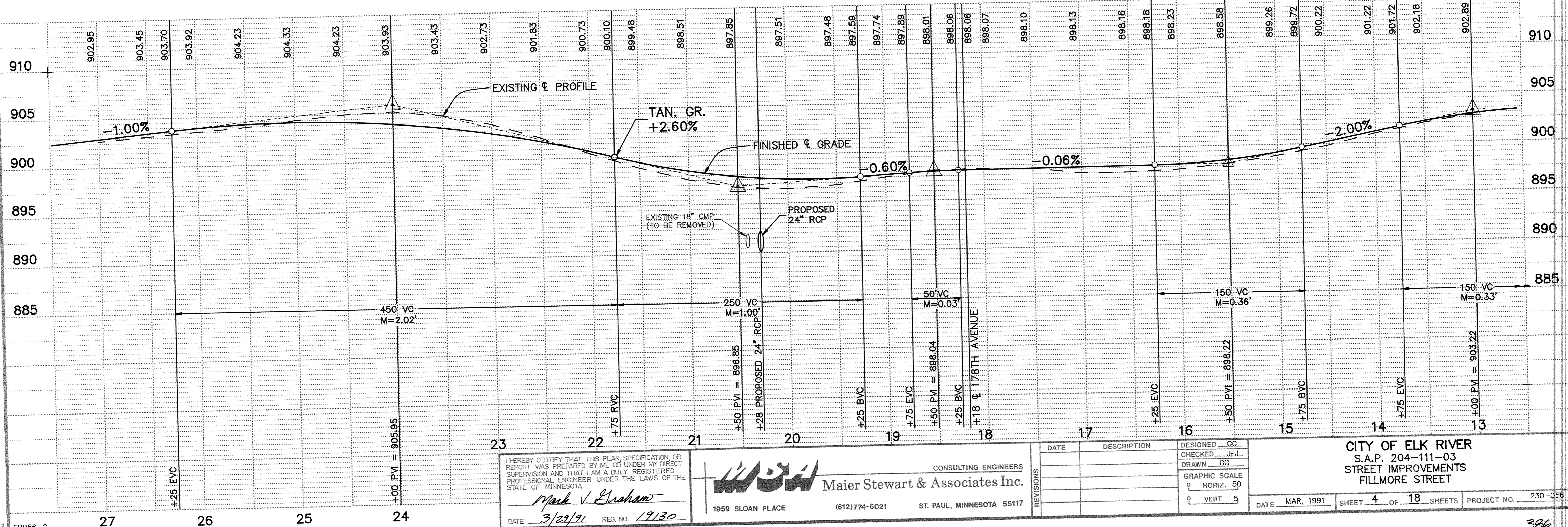
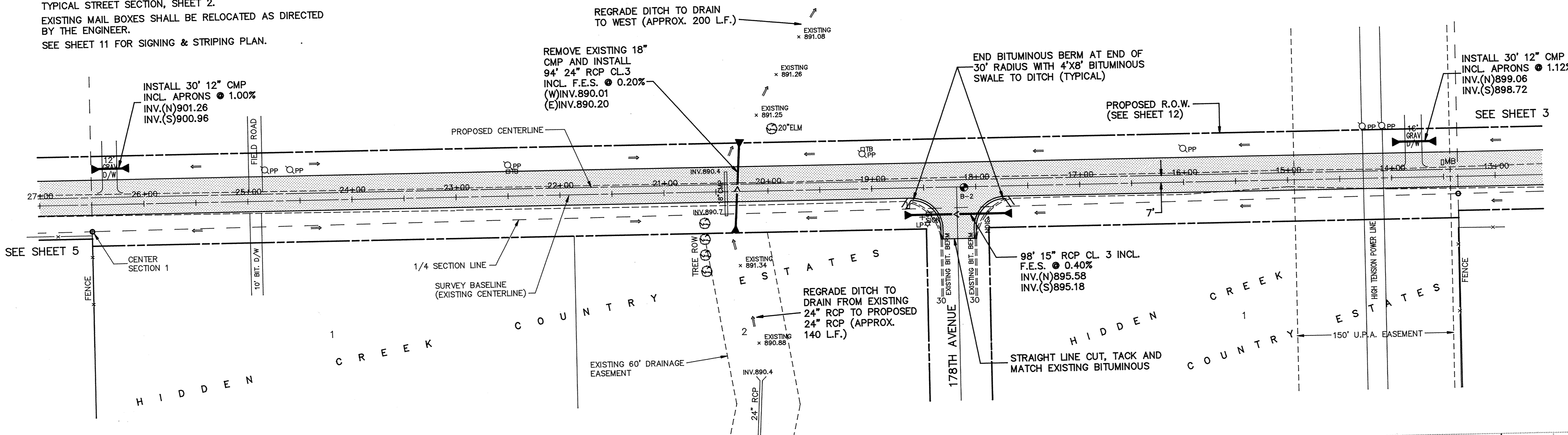
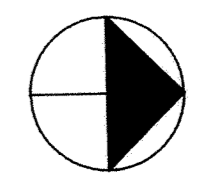


NOTE:
 THE CONTRACTOR SHALL COORDINATE RELOCATION OF EXISTING POWER POLES, TELEPHONE & CABLE BOXES WITH PROPER UTILITY COMPANIES TO PROVIDE THE REQ'D OBSTRUCTION FREE CLEAR ZONE AS SHOWN ON THE TYPICAL STREET SECTION, SHEET 2.
 EXISTING MAIL BOXES SHALL BE RELOCATED AS DIRECTED BY THE ENGINEER.
 SEE SHEET 11 FOR SIGNING & STRIPING PLAN.

FILLMORE STREET



I HEREBY CERTIFY THAT THIS PLAN, SPECIFICATION, OR REPORT WAS PREPARED BY ME OR UNDER MY DIRECT SUPERVISION AND THAT I AM A DULY REGISTERED PROFESSIONAL ENGINEER UNDER THE LAWS OF THE STATE OF MINNESOTA.
Mark V. Graham
 DATE 3/29/91 REG. NO. 19130

M&S CONSULTING ENGINEERS
Maier Stewart & Associates Inc.
 1959 SLOAN PLACE (612)774-6021 ST. PAUL, MINNESOTA 55117

DATE	DESCRIPTION	DESIGNED	GG
		CHECKED	JEJ
		DRAWN	GG
REVISIONS		GRAPHIC SCALE	
		0	HORIZ. 50
		0	VERT. 5

CITY OF ELK RIVER
 S.A.P. 204-111-03
 STREET IMPROVEMENTS
 FILLMORE STREET

DATE MAR. 1991 SHEET 4 OF 18 SHEETS PROJECT NO. 230-056

DRAWING NUMBER
 4
 FILM 91
 DRAWING NUMBER
 4
 DRAWING NUMBER
 4
 SAFECO PRODUCTS • NEW HOPKINS, MINNESOTA
 PREPARED BY PART NUMBER 8032
 REVISIONS BY PART NUMBER 8032
 REVISIONS BY PART NUMBER 8032
 REVISIONS BY PART NUMBER 8032