

# FILLMORE STREET

PROPOSED PERMANENT EASEMENT ACQUISITION (SEE SHEET 12)

PROPOSED 12' BITUMINOUS RIGHT TURN LANE (SEE TYPICAL SECTION, SHEET 2)

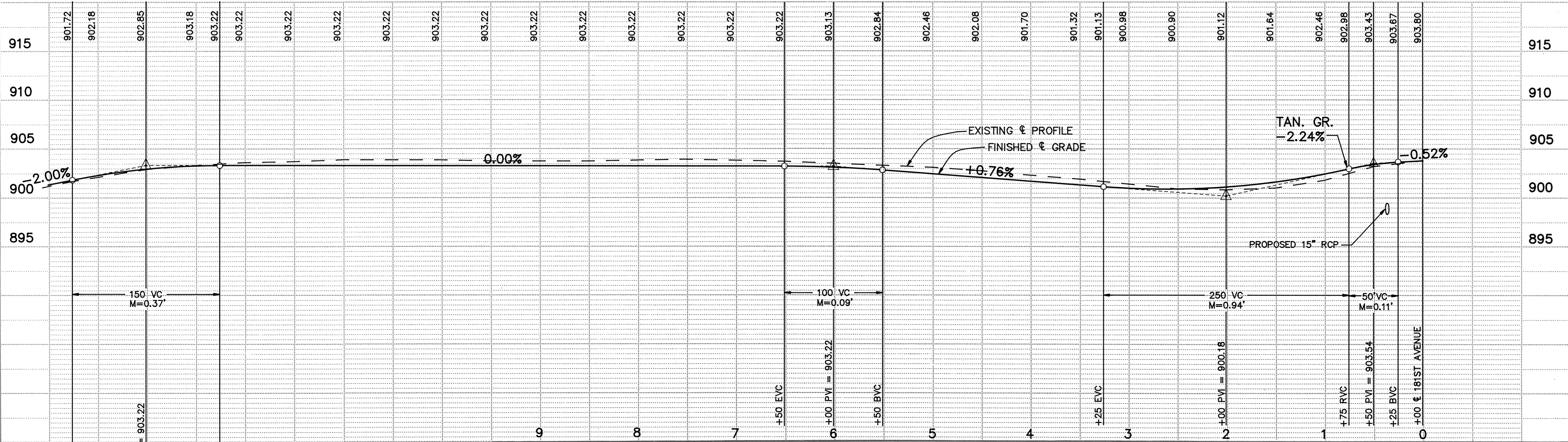
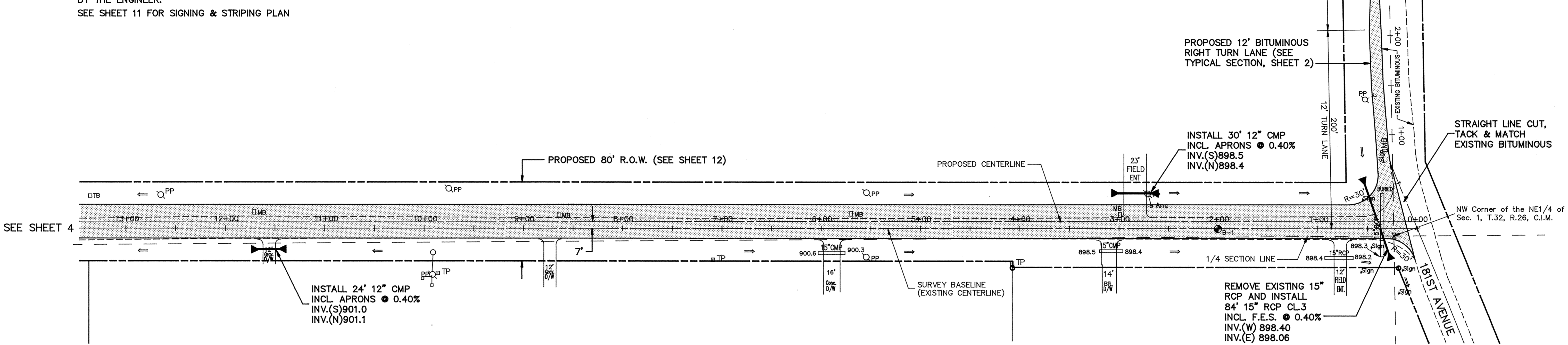
INSTALL 30' 12" CMP INCL. APRONS @ 0.40% INV.(S)898.5 INV.(N)898.4

STRAIGHT LINE CUT, TACK & MATCH EXISTING BITUMINOUS

NW Corner of the NE1/4 of Sec. 1, T.32, R.26, C.1.M.

NOTE:  
THE CONTRACTOR SHALL COORDINATE RELOCATION OF EXISTING POWER POLES, TELEPHONE & CABLE BOXES WITH PROPER UTILITY COMPANIES TO PROVIDE THE REQ'D OBSTRUCTION FREE CLEAR ZONE AS SHOWN ON THE TYPICAL STREET SECTION, SHEET 2.

EXISTING MAIL BOXES SHALL BE RELOCATED AS DIRECTED BY THE ENGINEER.  
SEE SHEET 11 FOR SIGNING & STRIPING PLAN



ER056-1

I HEREBY CERTIFY THAT THIS PLAN, SPECIFICATION, OR REPORT WAS PREPARED BY ME OR UNDER MY DIRECT SUPERVISION AND THAT I AM A DULY REGISTERED PROFESSIONAL ENGINEER UNDER THE LAWS OF THE STATE OF MINNESOTA.

*Mark V. Graham*  
 DATE 3/29/91 REG. NO. 19130

**Maier Stewart & Associates Inc.**  
 CONSULTING ENGINEERS  
 1959 SLOAN PLACE (612)774-6021 ST. PAUL, MINNESOTA 55117

DATE	DESCRIPTION	DESIGNED	CHECKED	DRAWN
		GG	JJ	GG

CITY OF ELK RIVER		S.A.P. 204-111-03	
STREET IMPROVEMENTS		FILLMORE STREET	
DATE MAR.1991	SHEET 3 OF 18 SHEETS	PROJECT NO. 230-056	