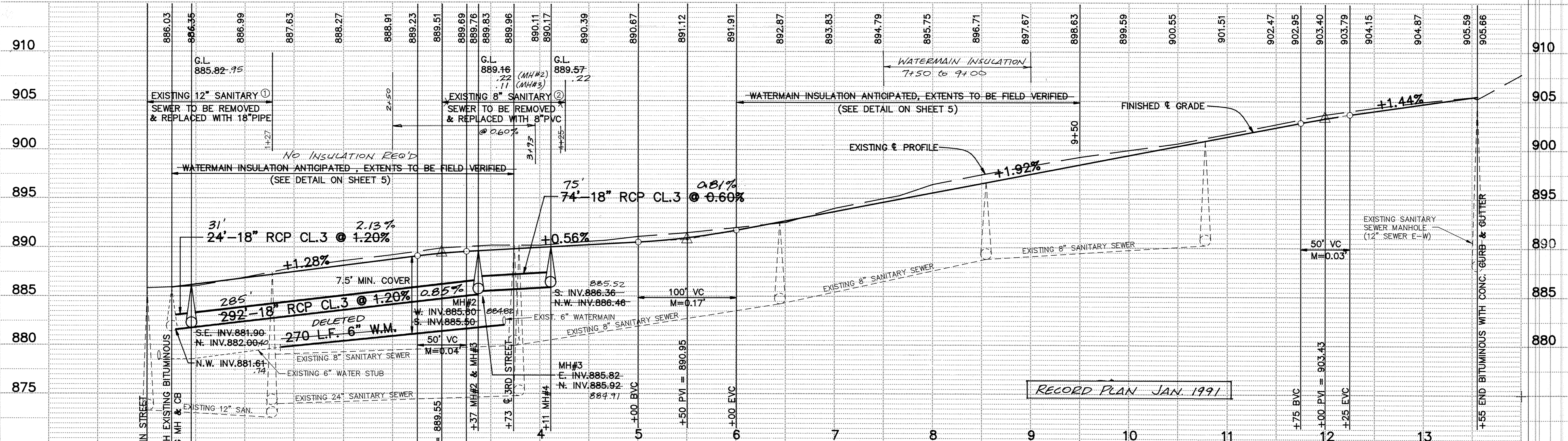
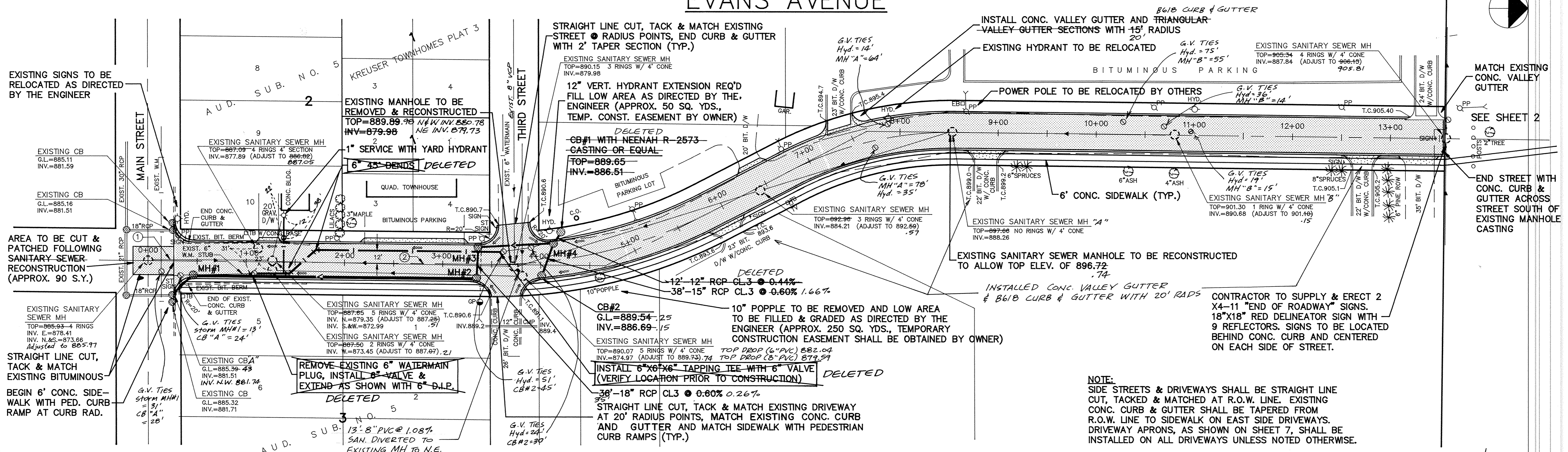


EVANS AVENUE



I HEREBY CERTIFY THAT THIS PLAN, SPECIFICATION OR REPORT WAS PREPARED BY ME OR UNDER MY DIRECT SUPERVISION AND THAT I AM A DULY REGISTERED PROFESSIONAL ENGINEER UNDER THE LAWS OF THE STATE OF MINNESOTA.

Mark V. Graham

DATE 7/16/90 REG. NO. 19130

MSA
CONSULTING ENGINEERS
Maier Stewart & Associates Inc.

1959 SLOAN PLACE (612)774-6021 ST. PAUL, MINNESOTA 55117

DATE	DESCRIPTION	DESIGNED	M/JG
8/28/90	WATERMAIN PORTIONS DELETED	CHECKED	TJM
		DRAWN	GG
		GRAPHIC SCALE	
		HORIZ.	50'
		VERT.	5'

CITY OF ELK RIVER
SEWER, WATER, STREET & STORM SEWER CONSTRUCTION
EVANS AVENUE

DATE JULY 1990 SHEET 3 OF 7 SHEETS PROJECT NO. 250-092