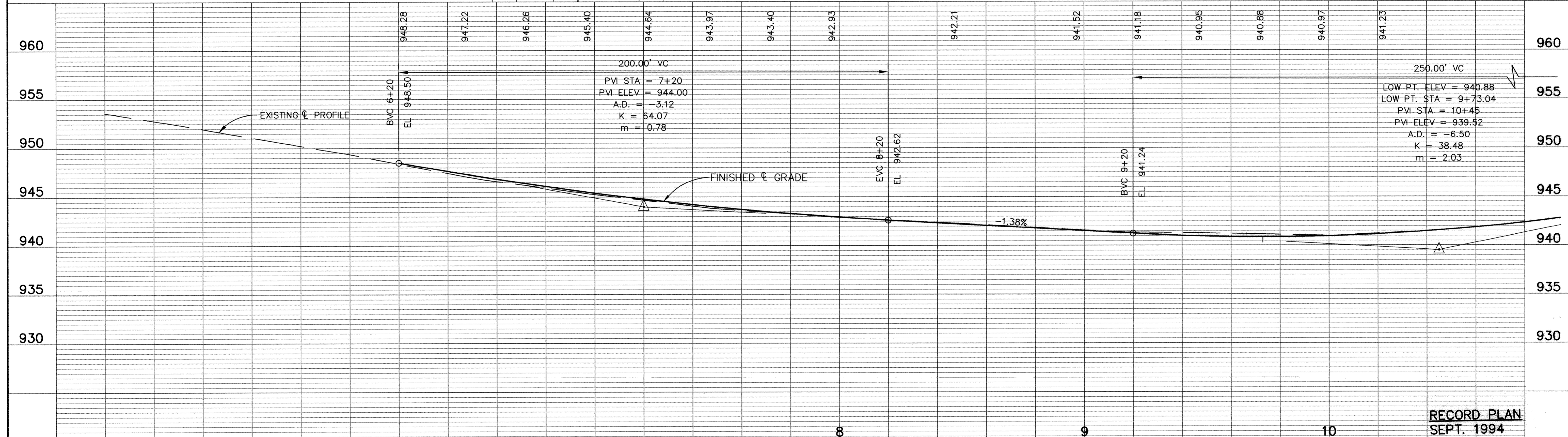


- NOTE:
1. REMOVE EXISTING CURB AND GUTTER AND EXTEND PAVEMENT AT 2.00% CROSS SLOPE TO PROPOSED CURB AND GUTTER.
 2. SIGNING AND STRIPING BY OTHERS. FIELD VERIFY EXISTING SIGNS TO BE SALVAGED AND REINSTALLED VERSUS NEW SIGNING.

1" BITUMINOUS WEAR COURSE (2331 41A)
 2" BITUMINOUS BASE COURSE (2331 31B)
 8" CLASS 5 AGGREGATE BASE

TYPICAL STREET SECTION
 193RD AVENUE



RECORD PLAN
 SEPT. 1994

I HEREBY CERTIFY THAT THIS PLAN, SPECIFICATION, OR REPORT WAS PREPARED BY ME OR UNDER MY DIRECT SUPERVISION AND THAT I AM A DULY REGISTERED PROFESSIONAL ENGINEER UNDER THE LAWS OF THE STATE OF MINNESOTA.
Paul Patton
 DATE 8-1-94 REG. NO. 13929



1326 ENERGY PARK DRIVE
 ST. PAUL, MINNESOTA 55108
 (612) 644-4389
 9800 SHELARD PARKWAY
 MINNEAPOLIS, MINNESOTA 55441
 (612) 546-0432

DATE	7/5/94	DESCRIPTION	REVISE 193RD AVENUE GEOMETRICS	DESIGNED	PEB
CHECKED	EP	DRAWN	CLS	GRAPHIC SCALE	0 HORIZ. 20 0 VERT. 5

CITY OF ELK RIVER
 TURN LANES
 193RD AVENUE
 STA. 6+50 TO 10+00
 DATE JUNE 1994 SHEET 13B OF 17 SHEETS PROJECT NO. 230-215

3D PRODUCTS • NEW HARBOR, MINNESOTA
 REPRODUCED BY PART NUMBER 6532
 3D PRODUCTS • NEW HARBOR, MINNESOTA
 REPRODUCED BY PART NUMBER 6532
 3D PRODUCTS • NEW HARBOR, MINNESOTA
 REPRODUCED BY PART NUMBER 6532
 3D PRODUCTS • NEW HARBOR, MINNESOTA
 REPRODUCED BY PART NUMBER 6532

24849