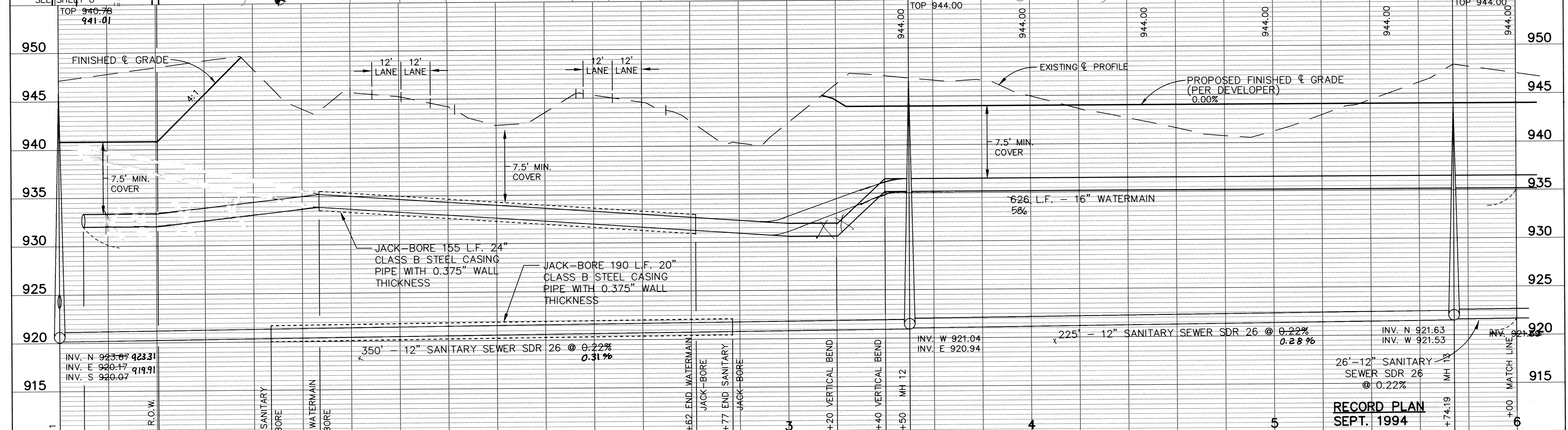
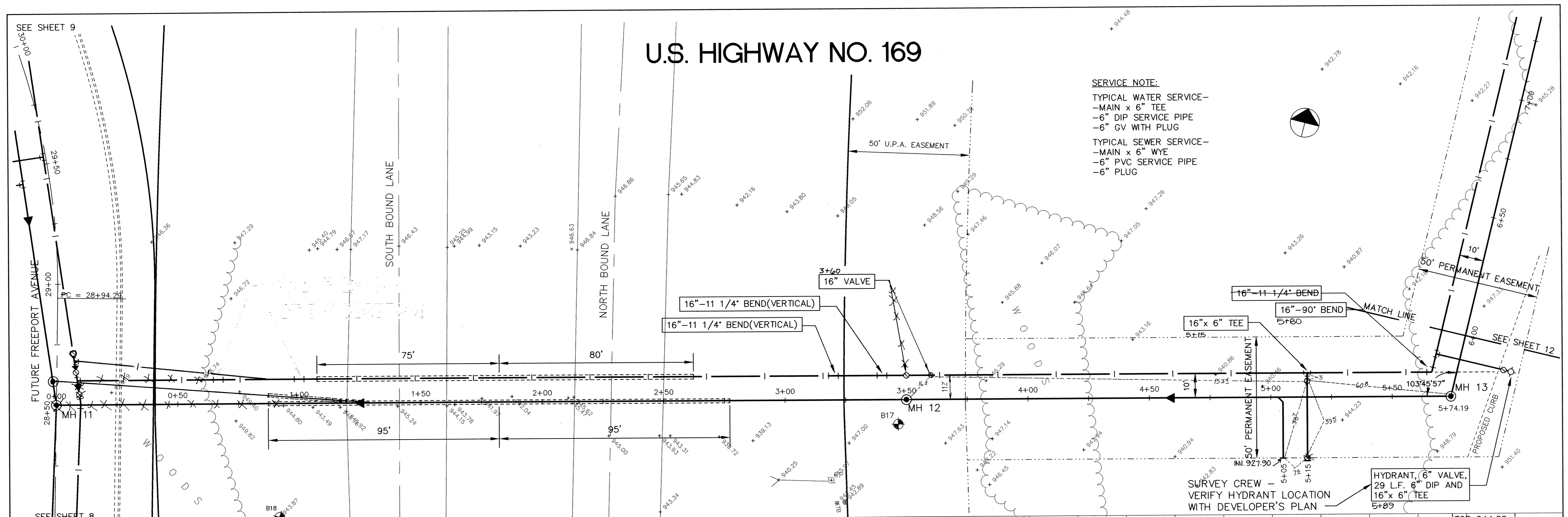


# U.S. HIGHWAY NO. 169

**SERVICE NOTE:**  
 TYPICAL WATER SERVICE—  
 -MAIN x 6" TEE  
 -6" DIP SERVICE PIPE  
 -6" GV WITH PLUG  
 TYPICAL SEWER SERVICE—  
 -MAIN x 6" WYE  
 -6" PVC SERVICE PIPE  
 -6" PLUG



0	MH 11	IN. N 923.67 IN. E 920.17 IN. S 920.07	R.O.W.	1	BEGIN SANITARY JACK-BORE	2	END WATERMAIN JACK-BORE	3	END SANITARY JACK-BORE	4	MH 12	IN. W 921.04 IN. E 920.94	5	MH 13	IN. N 921.63 IN. W 921.53	6	MATCH LINE
---	-------	--	--------	---	--------------------------	---	-------------------------	---	------------------------	---	-------	------------------------------	---	-------	------------------------------	---	------------

I HEREBY CERTIFY THAT THIS PLAN, SPECIFICATION, OR REPORT WAS PREPARED BY ME OR UNDER MY DIRECT SUPERVISION AND THAT I AM A DULY REGISTERED PROFESSIONAL ENGINEER UNDER THE LAWS OF THE STATE OF MINNESOTA.  
*Fred Baethgen*  
 DATE 6-20-94 REG. NO. 19229

**MSA**  
 CONSULTING ENGINEERS  
 1326 ENERGY PARK DRIVE  
 ST. PAUL, MINNESOTA 55108  
 (612) 644-4389  
 9800 SHELARD PARKWAY  
 MINNEAPOLIS, MINNESOTA 55441  
 (612) 546-0432

DATE	DESCRIPTION	DESIGNED	CHECKED	DRAWN
6/17/94	FREEPORT AVE. GRADE	P.B.	S.D.G.	C.L.S.
REVISIONS		GRAPHIC SCALE		
		0 HORIZ. 20		
		0 VERT. 5		

**RECORD PLAN**  
 SEPT. 1994  
 CITY OF ELK RIVER  
 TRUNK SANITARY AND WATERMAIN-ELK PARK CENTER  
 U.S. HIGHWAY NO. 169  
 STA. 0+00 TO 6+00  
 DATE MARCH 1994 SHEET 11 OF 17 SHEETS PROJECT NO. 230-215

750 753 853