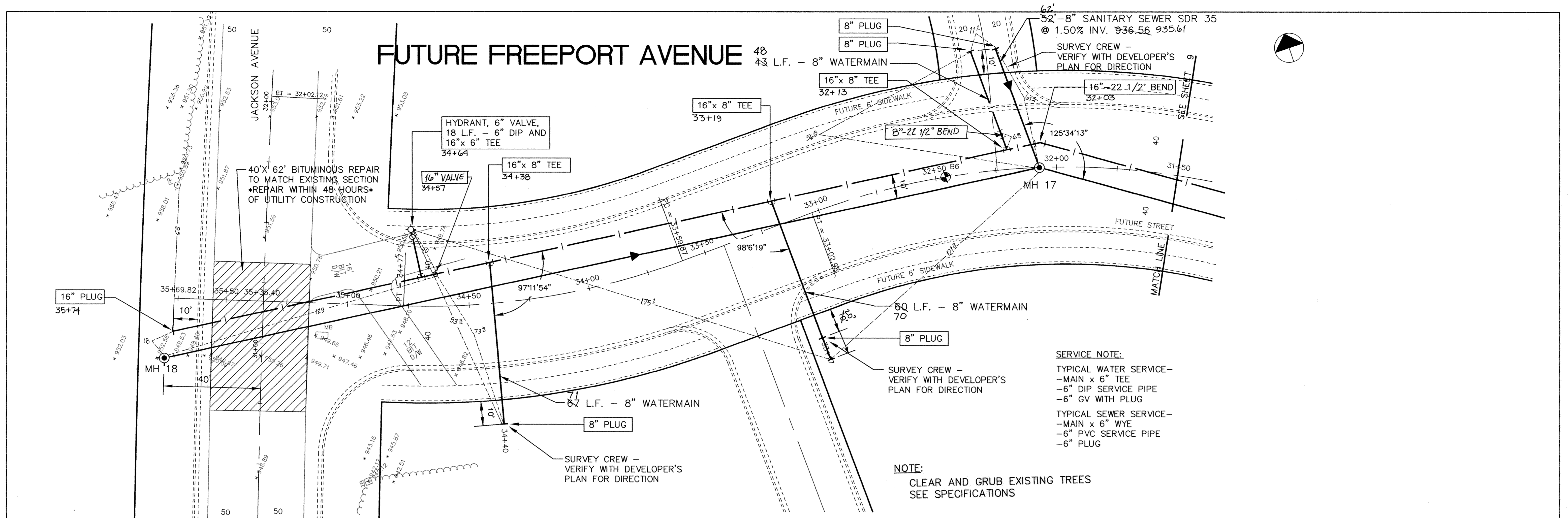
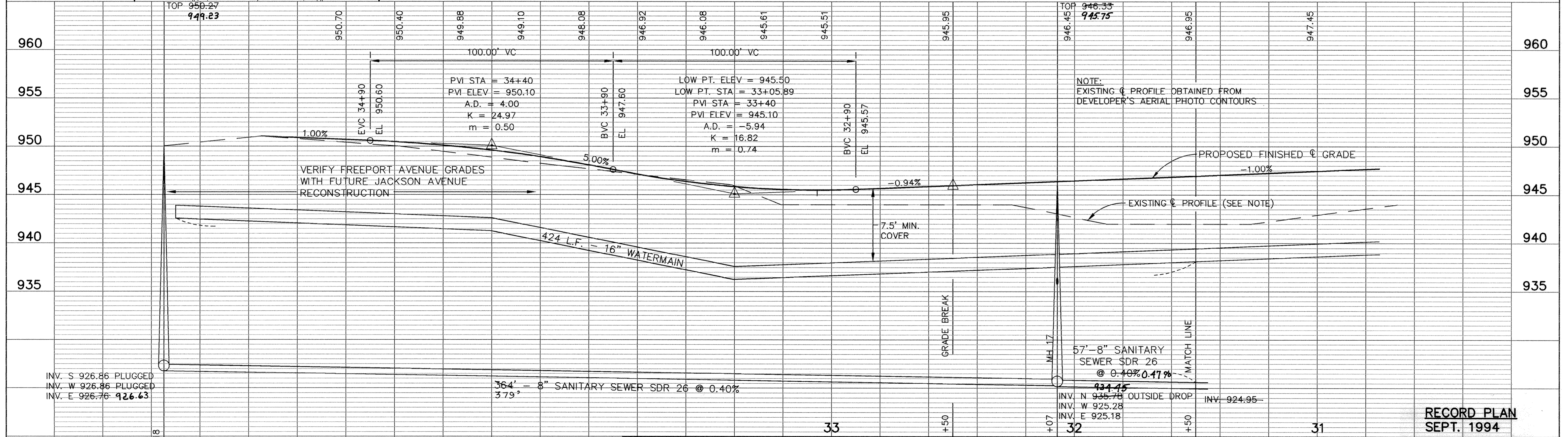


# FUTURE FREEPORT AVENUE



**SERVICE NOTE:**  
 TYPICAL WATER SERVICE—  
 -MAIN x 6" TEE  
 -6" DIP SERVICE PIPE  
 -6" GV WITH PLUG  
 TYPICAL SEWER SERVICE—  
 -MAIN x 6" WYE  
 -6" PVC SERVICE PIPE  
 -6" PLUG

**NOTE:**  
 CLEAR AND GRUB EXISTING TREES  
 SEE SPECIFICATIONS



**NOTE:**  
 EXISTING  $\phi$  PROFILE OBTAINED FROM  
 DEVELOPER'S AERIAL PHOTO CONTOURS

**RECORD PLAN**  
**SEPT. 1994**

INV. S 926.86 PLUGGED  
 INV. W 926.86 PLUGGED  
 INV. E 926.76 **926.63**

364' - 8" SANITARY SEWER SDR 26 @ 0.40%  
 379'

MH 17  
 57'-8" SANITARY SEWER SDR 26  
 @ 0.40% 0.17%  
 934.45  
 INV. N 935.78 OUTSIDE DROP  
 INV. W 925.28  
 INV. E 925.18

I HEREBY CERTIFY THAT THIS PLAN, SPECIFICATION, OR REPORT WAS PREPARED BY ME OR UNDER MY DIRECT SUPERVISION AND THAT I AM A DULY REGISTERED PROFESSIONAL ENGINEER UNDER THE LAWS OF THE STATE OF MINNESOTA.  
*Paul Boettch*  
 DATE 3-28-94 REG. NO. 13929



1326 ENERGY PARK DRIVE  
 ST. PAUL, MINNESOTA 55108  
 (612) 644-4389  
 9800 SHELARD PARKWAY  
 MINNEAPOLIS, MINNESOTA 55441  
 (612) 546-0432

DATE	DESCRIPTION	DESIGNED	PER
		CHECKED	SDG
		DRAWN	CLS
GRAPHIC SCALE		0 HORIZ. 20	
		0 VERT. 5	

CITY OF ELK RIVER  
 TRUNK SANITARY AND WATERMAIN-ELK PARK CENTER STA.  
 FUTURE FREEPORT AVENUE 31+50 TO 35+35.40  
 DATE MARCH 1994 SHEET 10 OF 17 SHEETS PROJECT NO. 230-215