

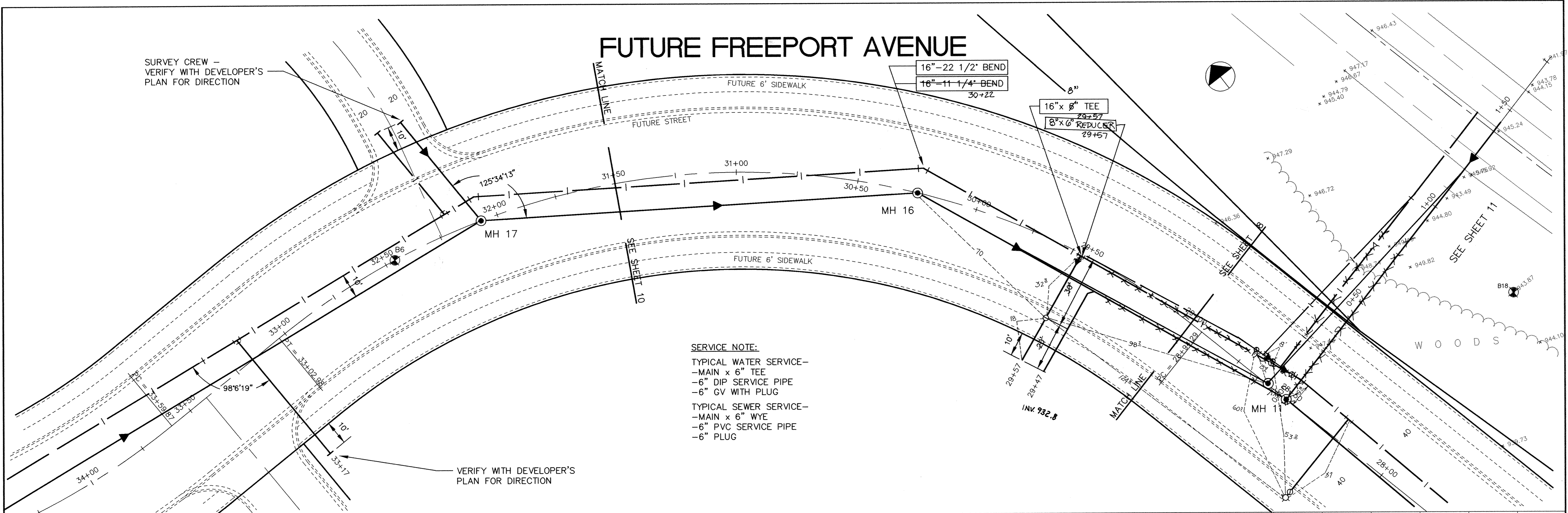
DRAWING NUMBER
ELK PAT 94
9

SAECO PRODUCTS • NEW HOPE, MINNESOTA
REPRODUCED BY PART NUMBER 6522

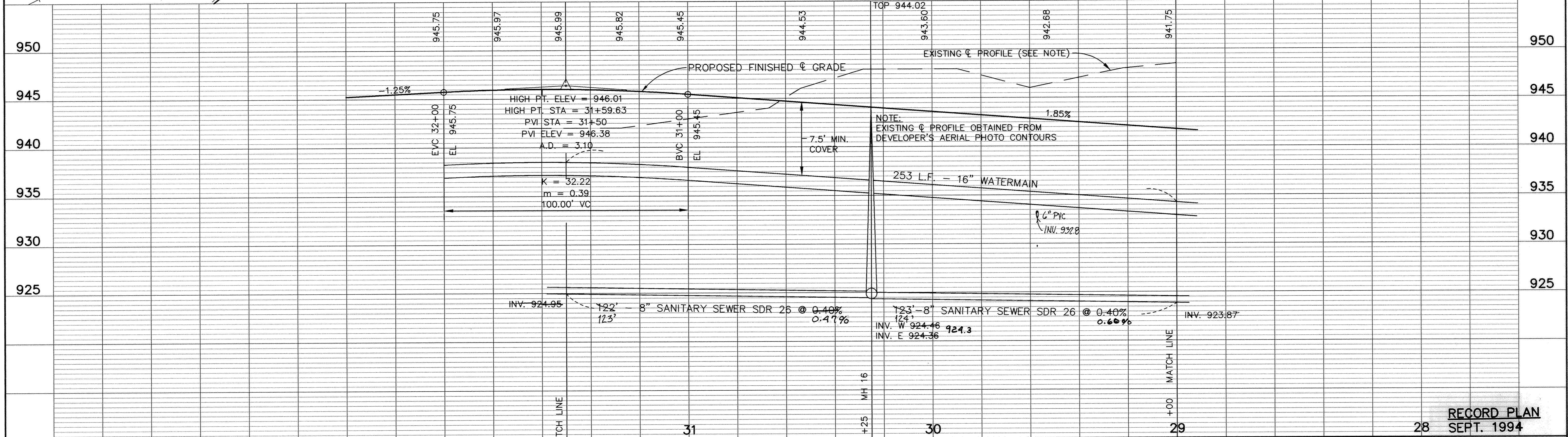
SAECO PRODUCTS • NEW HOPE, MINNESOTA
REPRODUCED BY PART NUMBER 6522

SAECO PRODUCTS • NEW HOPE, MINNESOTA
REPRODUCED BY PART NUMBER 6522

SAECO PRODUCTS • NEW HOPE, MINNESOTA
REPRODUCED BY PART NUMBER 6522



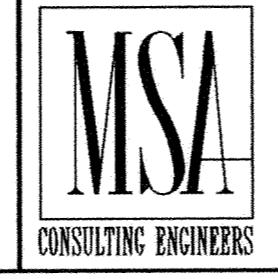
SERVICE NOTE:
 TYPICAL WATER SERVICE -
 -MAIN x 6" TEE
 -6" DIP SERVICE PIPE
 -6" GV WITH PLUG
 TYPICAL SEWER SERVICE -
 -MAIN x 6" WYE
 -6" PVC SERVICE PIPE
 -6" PLUG



RECORD PLAN
 28 SEPT. 1994

I HEREBY CERTIFY THAT THIS PLAN, SPECIFICATION, OR REPORT WAS PREPARED BY ME OR UNDER MY DIRECT SUPERVISION AND THAT I AM A DULY REGISTERED PROFESSIONAL ENGINEER UNDER THE LAWS OF THE STATE OF MINNESOTA.

Paul Boettel
 DATE 6-20-94 REG. NO. 13929



1326 ENERGY PARK DRIVE
 ST. PAUL, MINNESOTA 55108
 (612) 644-4389

9800 SHELARD PARKWAY
 MINNEAPOLIS, MINNESOTA 55441
 (612) 546-0432

DATE	DESCRIPTION	DESIGNED	CHECKED	DRAWN
6/17/94	FREEPORT AVE. GRADE	PEB	SDG	CLS

CITY OF ELK RIVER
 TRUNK SANITARY AND WATERMAIN-ELK PARK CENTER
 FUTURE FREEPORT AVENUE

STA. 29+00 TO 31+50

DATE MARCH 1994 SHEET 9 OF 17 SHEETS PROJECT NO. 230-215

Mon Jun 20 14:23:27 1994

ER215-7

33

32

755 855