

FUTURE FREEPORT AVENUE

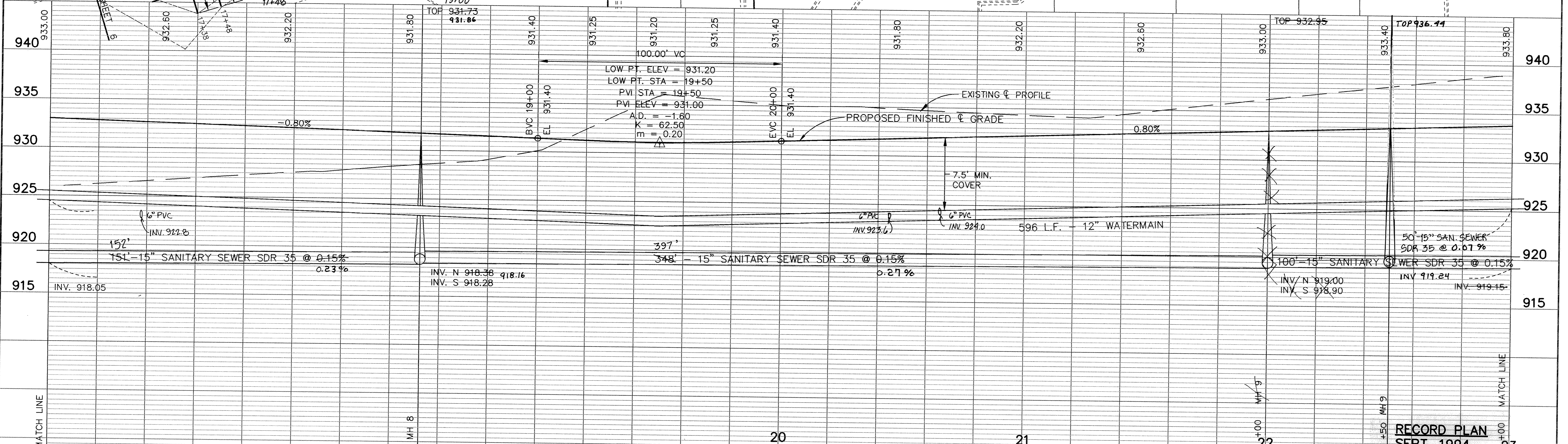
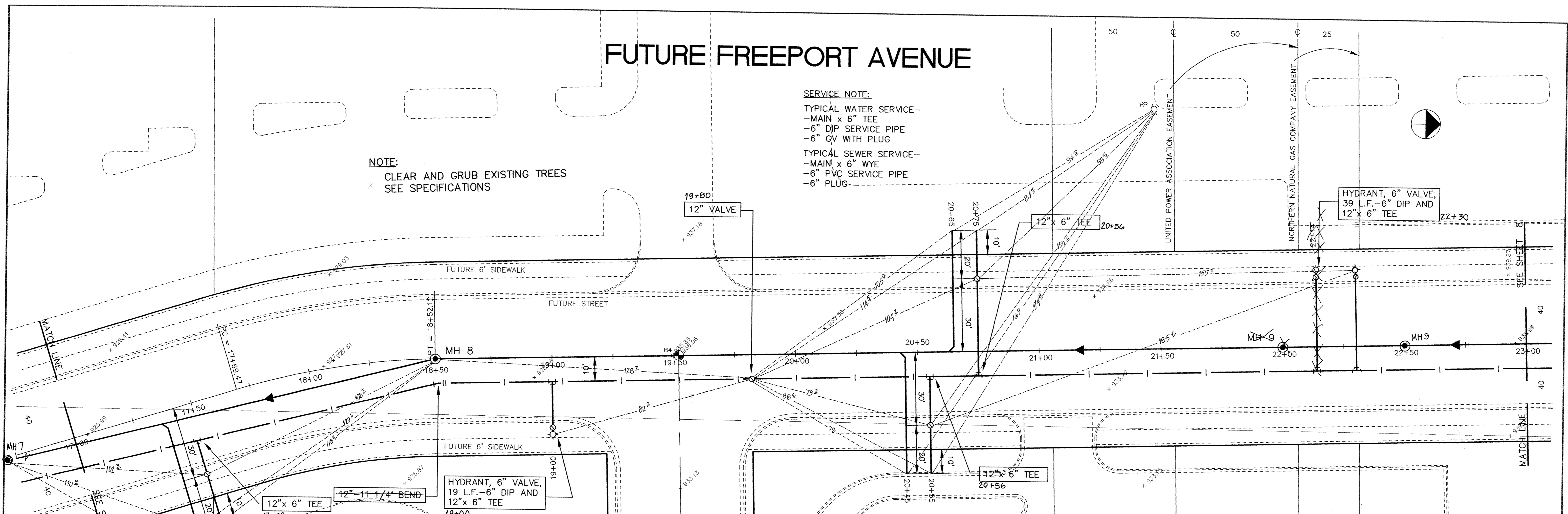
SERVICE NOTE:

TYPICAL WATER SERVICE-
 -MAIN x 6" TEE
 -6" DIP SERVICE PIPE
 -6" GV WITH PLUG

TYPICAL SEWER SERVICE-
 -MAIN x 6" WYE
 -6" PVC SERVICE PIPE
 -6" PLUG

NOTE:

CLEAR AND GRUB EXISTING TREES
 SEE SPECIFICATIONS



17 ER215-5	18	19	20	21	22	23
---------------	----	----	----	----	----	----

I HEREBY CERTIFY THAT THIS PLAN, SPECIFICATION, OR REPORT WAS PREPARED BY ME OR UNDER MY DIRECT SUPERVISION AND THAT I AM A DULY REGISTERED PROFESSIONAL ENGINEER UNDER THE LAWS OF THE STATE OF MINNESOTA.

Paul Boehm
 DATE 3-28-94 REG. NO. 13929

1326 ENERGY PARK DRIVE
 ST. PAUL, MINNESOTA 55108
 (612) 644-4389

9800 SHELARD PARKWAY
 MINNEAPOLIS, MINNESOTA 55441
 (612) 546-0432

REVISIONS	DATE	DESCRIPTION

DESIGNED	P.B.
CHECKED	S.D.G.
DRAWN	C.L.S.

GRAPHIC SCALE
 0' HORIZ. 20'
 0' VERT. 5'

CITY OF ELK RIVER
 TRUNK SANITARY AND WATERMAIN-ELK PARK CENTER
 FUTURE FREEPORT AVENUE STA.
 17+00 TO 23+00

RECORD PLAN
 SEPT. 1994

DATE MARCH 1994

SHEET 7 OF 17 SHEETS

PROJECT NO. 230-215