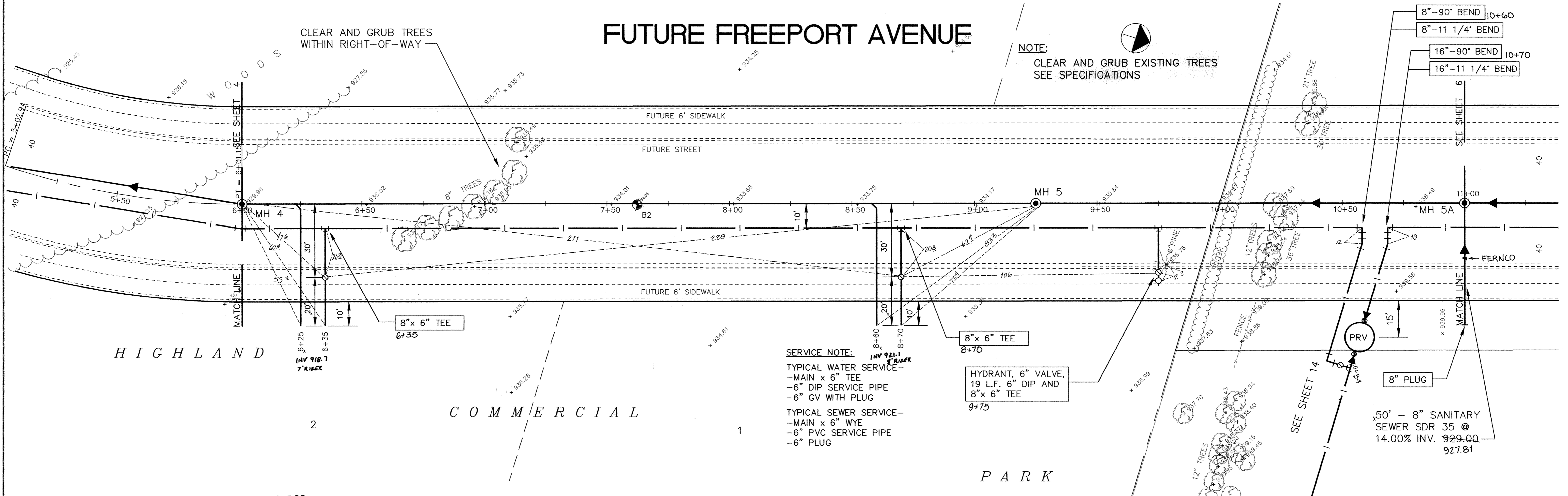
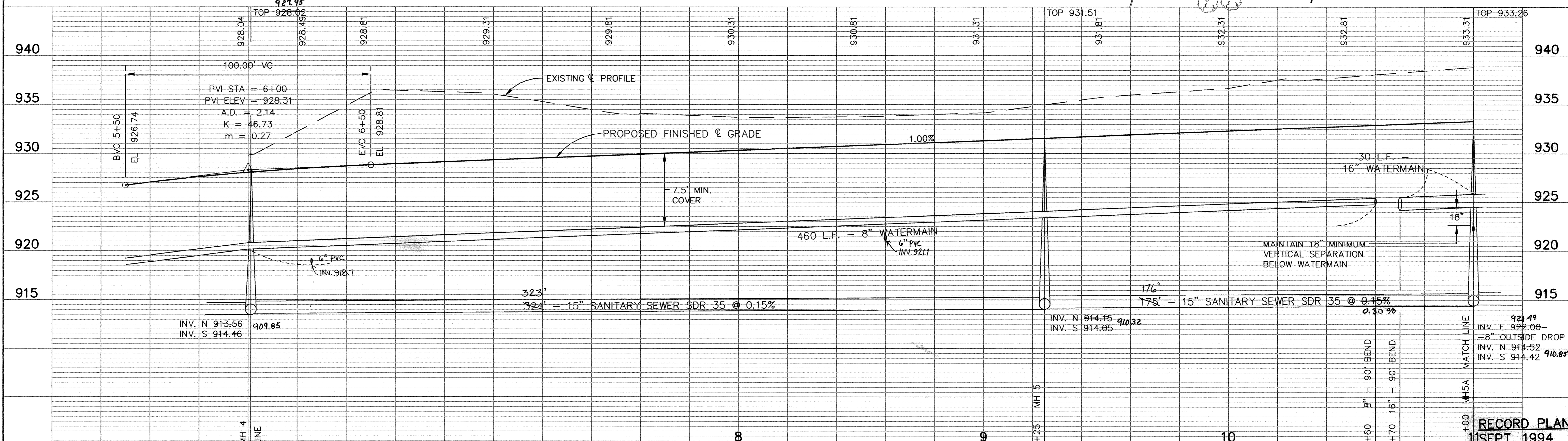


FUTURE FREEPORT AVENUE

NOTE:
CLEAR AND GRUB EXISTING TREES
SEE SPECIFICATIONS



SERVICE NOTE:
 TYPICAL WATER SERVICE—
 —MAIN x 6" TEE
 —6" DIP SERVICE PIPE
 —6" GV WITH PLUG
 TYPICAL SEWER SERVICE—
 —MAIN x 6" WYE
 —6" PVC SERVICE PIPE
 —6" PLUG



RECORD PLAN
11 SEPT. 1994

I HEREBY CERTIFY THAT THIS PLAN, SPECIFICATION, OR REPORT WAS PREPARED BY ME OR UNDER MY DIRECT SUPERVISION AND THAT I AM A DULY REGISTERED PROFESSIONAL ENGINEER UNDER THE LAWS OF THE STATE OF MINNESOTA.
Paul Boettel
 DATE 3-28-94 REG. NO. 13929

MSA
 CONSULTING ENGINEERS
 1326 ENERGY PARK DRIVE
 ST. PAUL, MINNESOTA 55108
 (612) 644-4389
 9800 SHELARD PARKWAY
 MINNEAPOLIS, MINNESOTA 55441
 (612) 546-0432

DATE	DESCRIPTION	DESIGNED	PER
		CHECKED	SDC
		DRAWN	CLS

REVISIONS	DATE	DESCRIPTION

CITY OF ELK RIVER
 TRUNK SANITARY AND WATERMAIN—ELK PARK CENTER
 FUTURE FREEPORT AVENUE
 STA. 6+01.15 TO 11+00
 DATE MARCH 1994 SHEET 5 OF 17 SHEETS PROJECT NO. 230-215