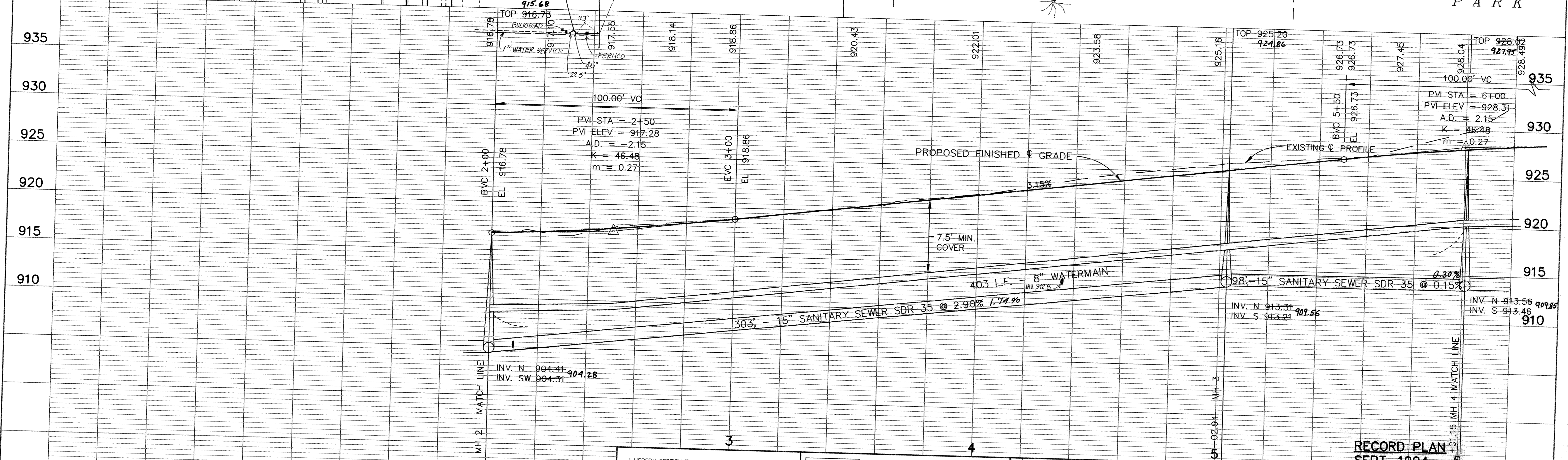


SERVICE NOTE:
 TYPICAL WATER SERVICE-
 -MAIN x 6" TEE
 -6" DIP SERVICE PIPE
 -6" GV WITH PLUG
 TYPICAL SEWER SERVICE-
 -MAIN x 6" WYE
 -6" PVC SERVICE PIPE
 -6" PLUG



I HEREBY CERTIFY THAT THIS PLAN, SPECIFICATION, OR REPORT WAS PREPARED BY ME OR UNDER MY DIRECT SUPERVISION AND THAT I AM A DULY REGISTERED PROFESSIONAL ENGINEER UNDER THE LAWS OF THE STATE OF MINNESOTA.
Paul Baethlin
 DATE 3-28-94 REG. NO. 13929



1326 ENERGY PARK DRIVE
 ST. PAUL, MINNESOTA 55108
 (612) 644-4389
 9800 SHELARD PARKWAY
 MINNEAPOLIS, MINNESOTA 55441
 (612) 546-0432

REVISIONS	DATE	DESCRIPTION	DESIGNED	PEB
			CHECKED	SDG
			DRAWN	CLS

RECORD PLAN
SEPT. 1994
 CITY OF ELK RIVER
 TRUNK SANITARY AND WATERMAIN-ELK PARK CENTER
 FUTURE FREEPORT AVENUE STA. 2+00 TO 6+01.15
 DATE MARCH 1994

DRAWING NUMBER
 ELKPAT 94
 4
 SAFCO PRODUCTS • NEW HOPE, MINNESOTA
 REVISION NUMBER 1828
 SAFCO PRODUCTS • NEW HOPE, MINNESOTA
 REVISION NUMBER 1828
 SAFCO PRODUCTS • NEW HOPE, MINNESOTA
 REVISION NUMBER 1828
 SAFCO PRODUCTS • NEW HOPE, MINNESOTA
 REVISION NUMBER 1828