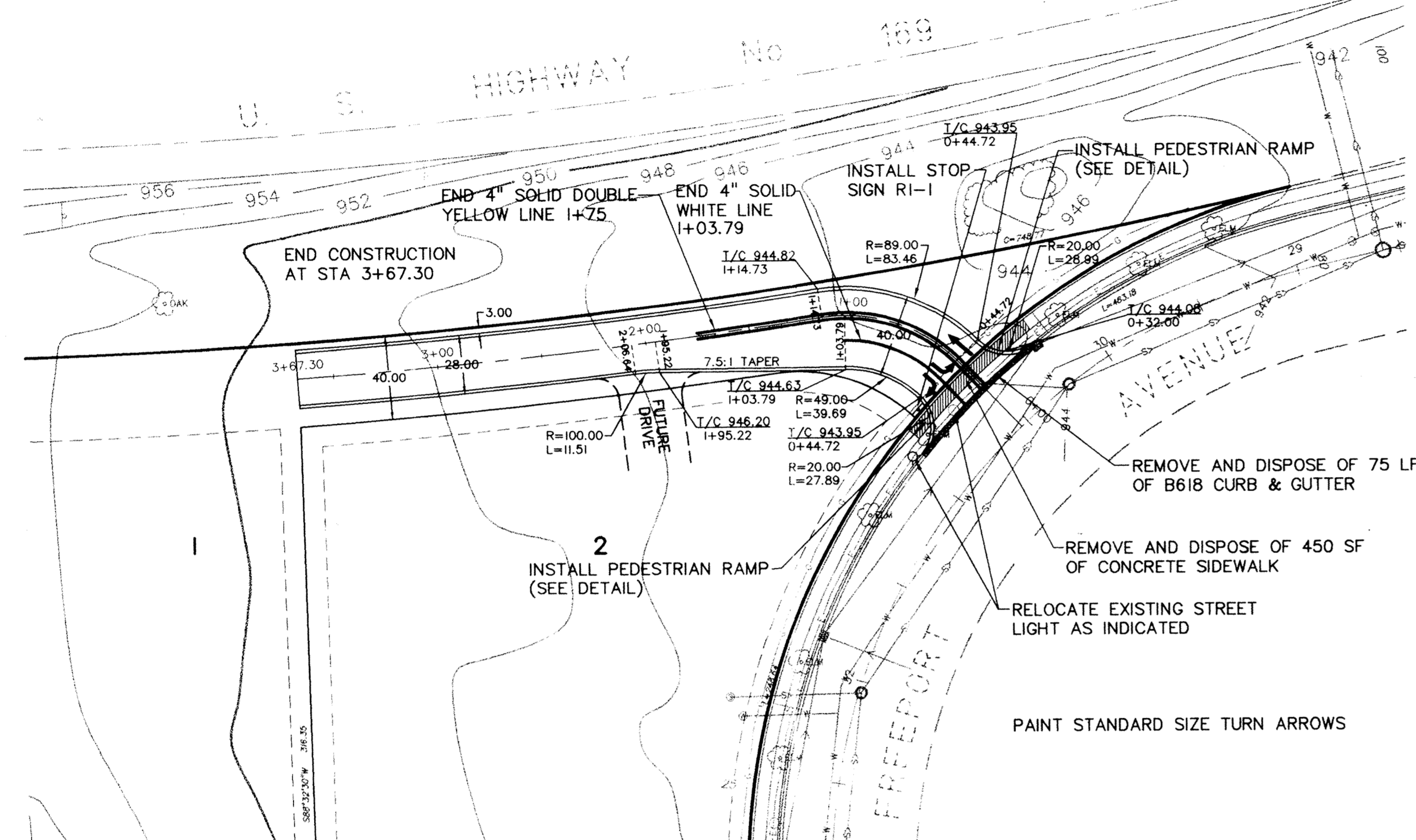
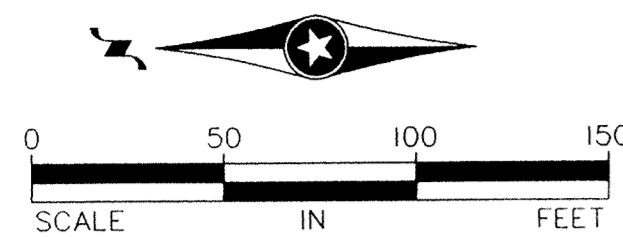
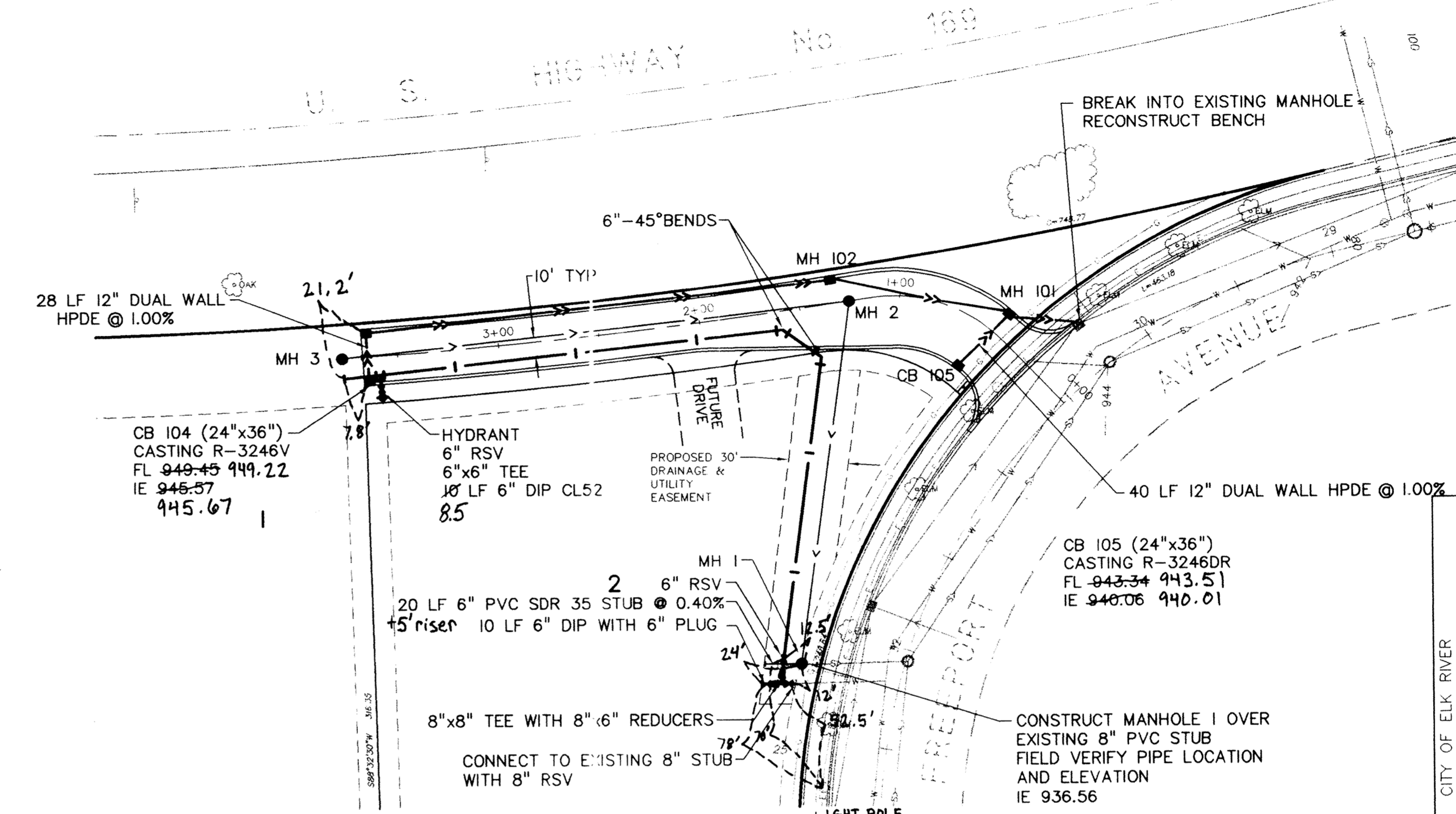
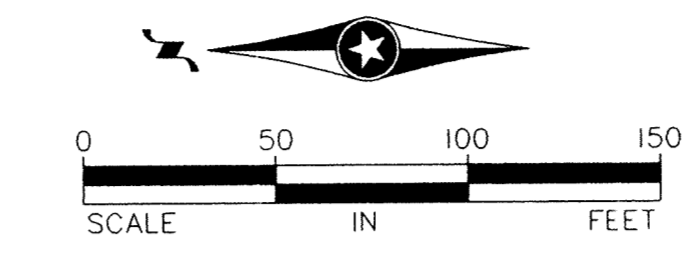


DRIVEWAY PLAN



UTILITY PLAN

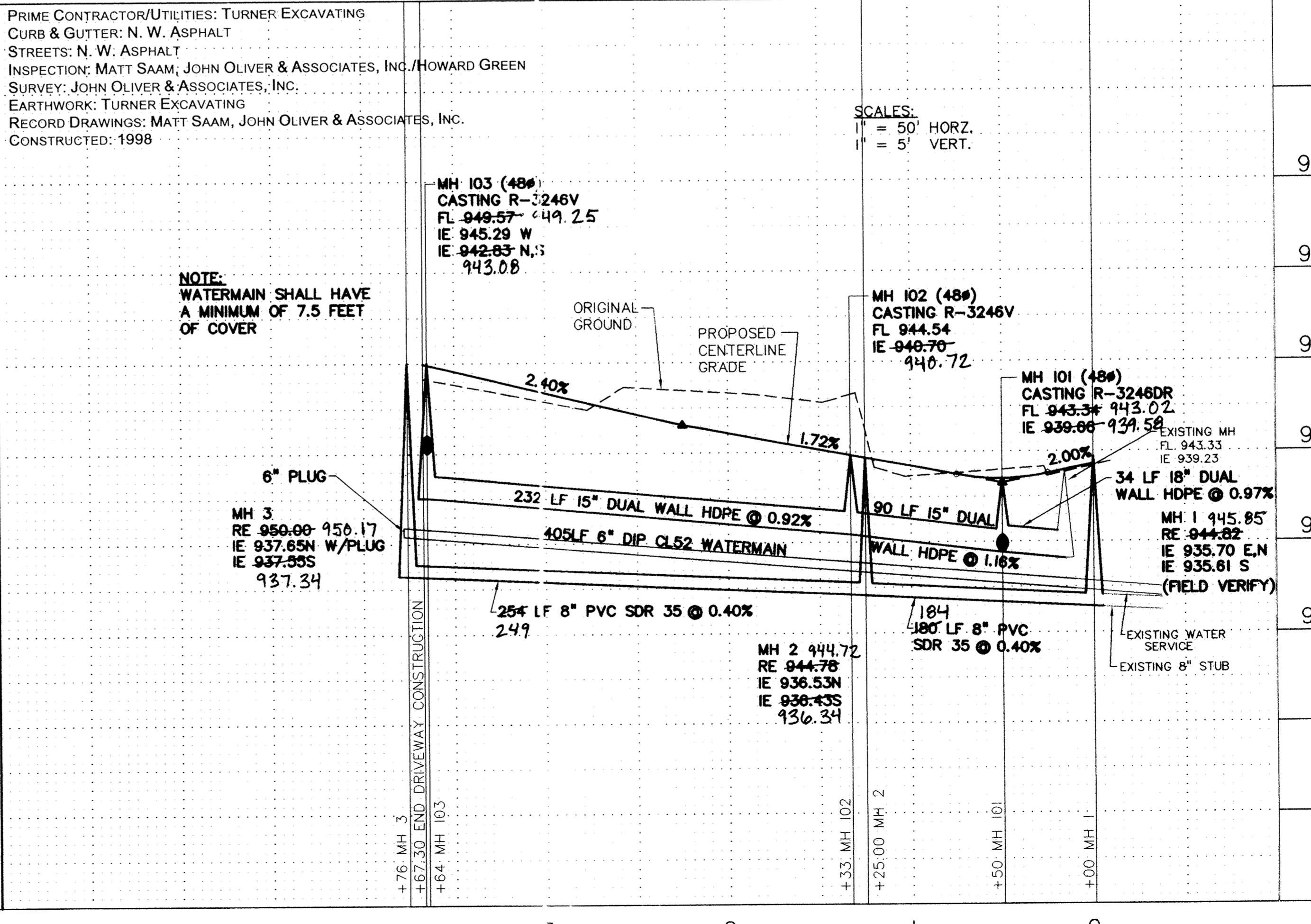
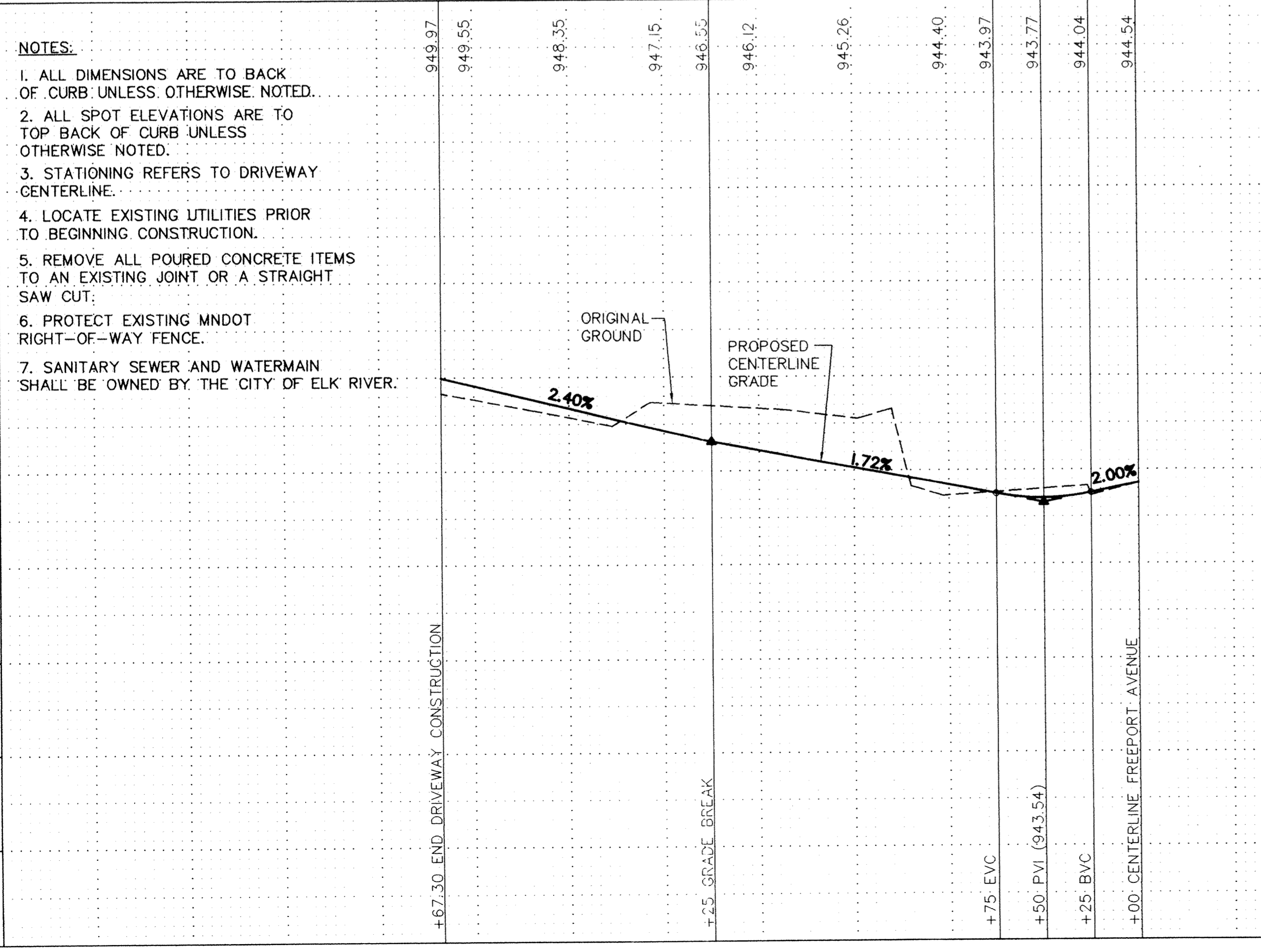
RECORD DRAWINGS



- NOTES:**
- ALL DIMENSIONS ARE TO BACK OF CURB UNLESS OTHERWISE NOTED.
 - ALL SPOT ELEVATIONS ARE TO TOP BACK OF CURB UNLESS OTHERWISE NOTED.
 - STATIONING REFERS TO DRIVEWAY CENTERLINE.
 - LOCATE EXISTING UTILITIES PRIOR TO BEGINNING CONSTRUCTION.
 - REMOVE ALL POURED CONCRETE ITEMS TO AN EXISTING JOINT OR A STRAIGHT SAW CUT.
 - PROTECT EXISTING MNDOT RIGHT-OF-WAY FENCE.
 - SANITARY SEWER AND WATERMAIN SHALL BE OWNED BY THE CITY OF ELK RIVER.

PRIME CONTRACTOR/UTILITIES: TURNER EXCAVATING
 CURB & GUTTER: N. W. ASPHALT
 STREETS: N. W. ASPHALT
 INSPECTION: MATT SAAM, JOHN OLIVER & ASSOCIATES, INC./HOWARD GREEN
 SURVEY: JOHN OLIVER & ASSOCIATES, INC.
 EARTHWORK: TURNER EXCAVATING
 RECORD DRAWINGS: MATT SAAM, JOHN OLIVER & ASSOCIATES, INC.
 CONSTRUCTED: 1998

REV NO.	DATE	DESCRIPTION
1	2/10/98	ADDED MANHOLE 2
2	3/18/98	REVISED UTILITY LOC., VALLEY GUTTER
3	4/13/98	REALIGN SAN SEWER, REMOVE VALLEY GUTTER, 45° BENDS IN WM
4	4/15/98	REMOVED NOTE
5	7/10/98	RECORD DRAWING



John Oliver & Associates, Inc.
 Civil Engineering, Land Surveying, Land Planning
 580 Dodge Avenue
 Elk River, Minnesota
 (612)441-2072 (FAX)441-5665
 201 W. Travelers Trail, Suite 200
 Burnsville, MN 55335
 (612)894-3045 (FAX)894-3049

ELK PARK CENTER 3RD ADDITION
 ELK RIVER, MN
 KRAUS - ANDERSON BUILDINGS, INC.
 SANITARY SEWER, STORM SEWER,
 WATERMAIN AND DRIVEWAY PLAN

SHEET NO. 1 OF 3