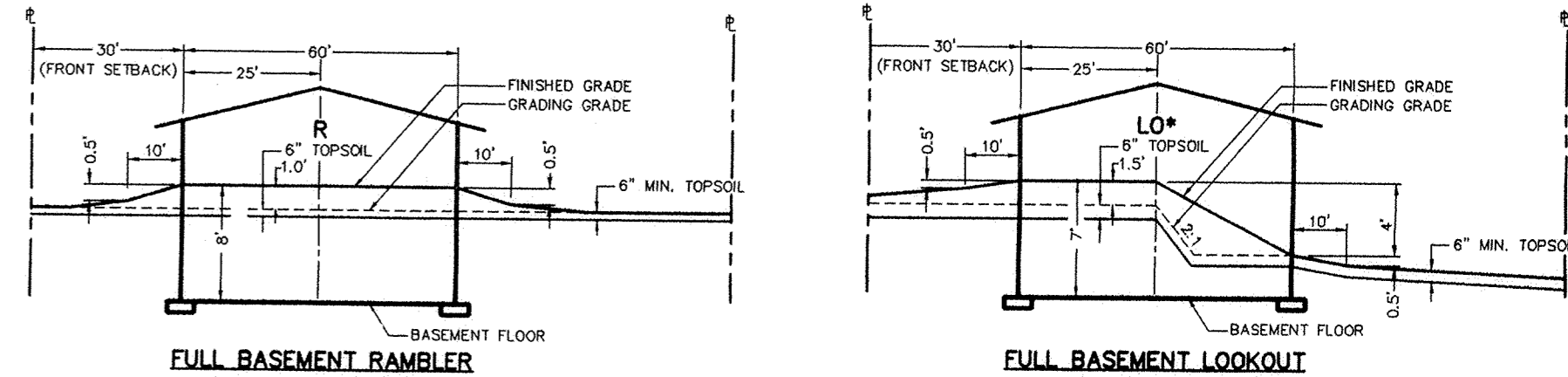
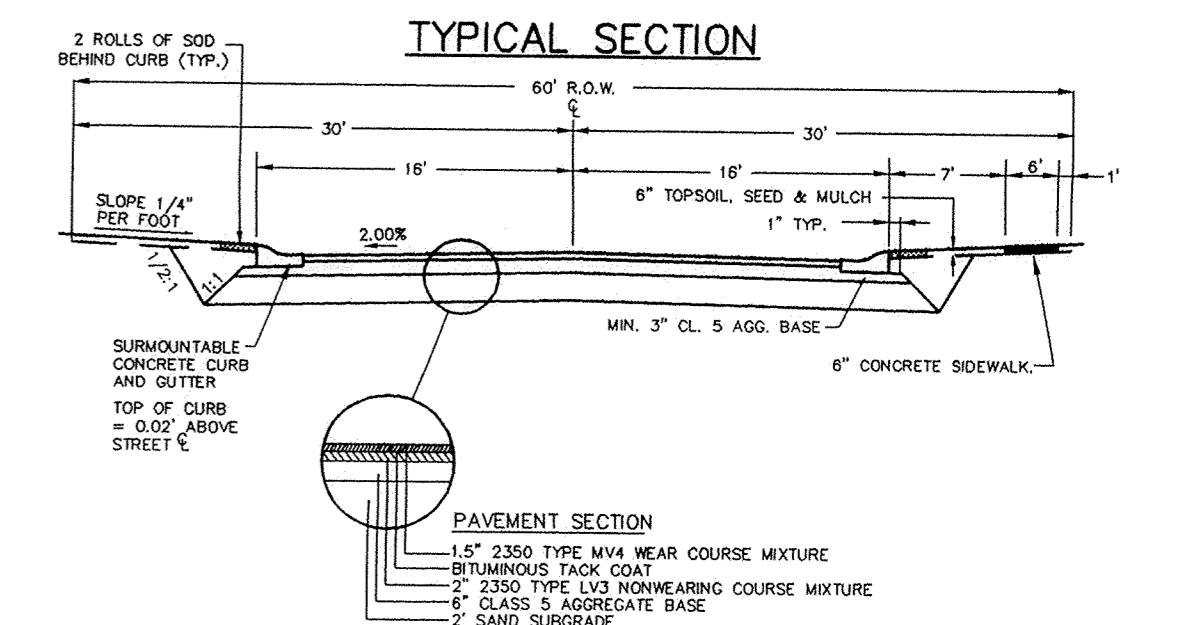
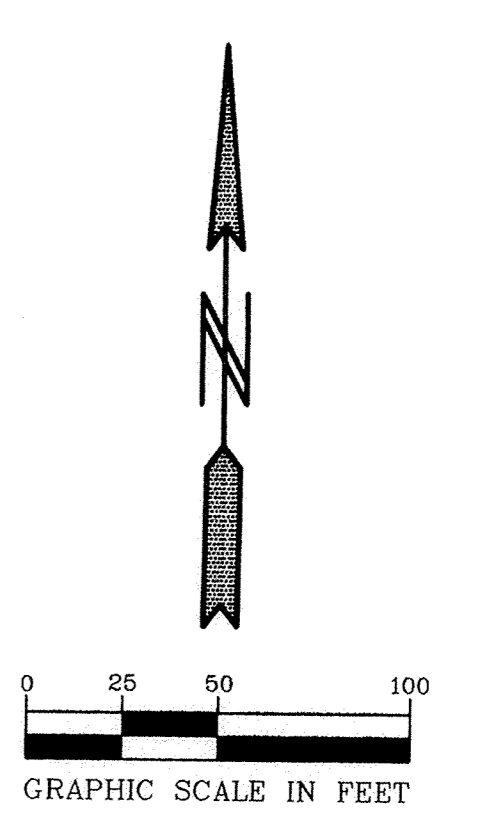
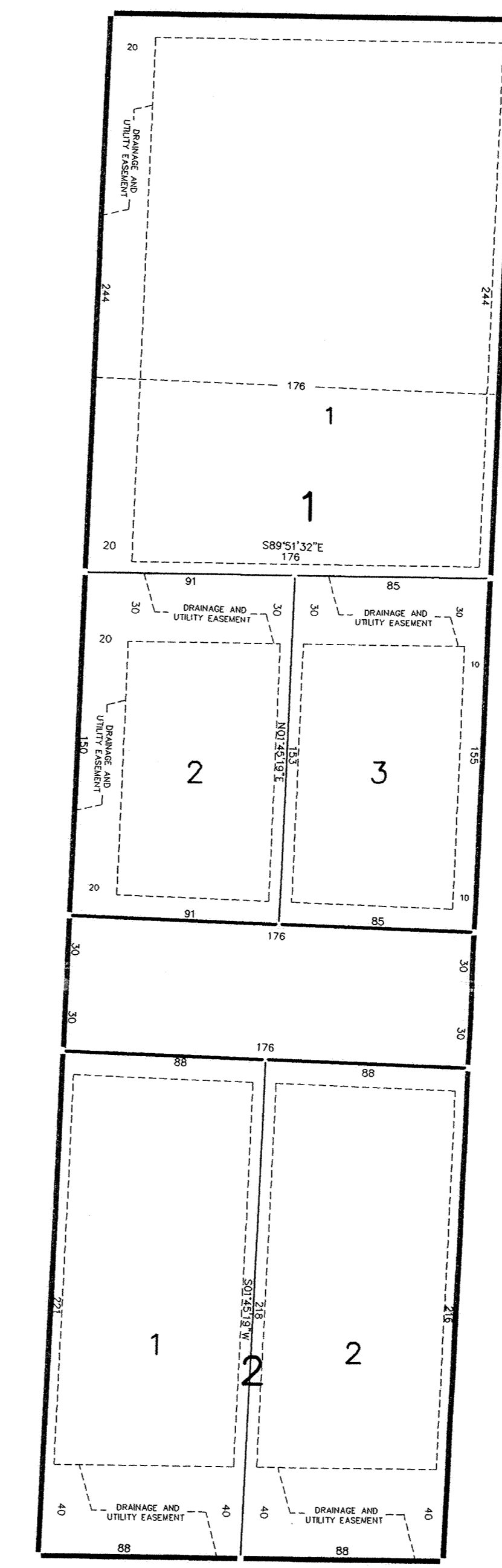


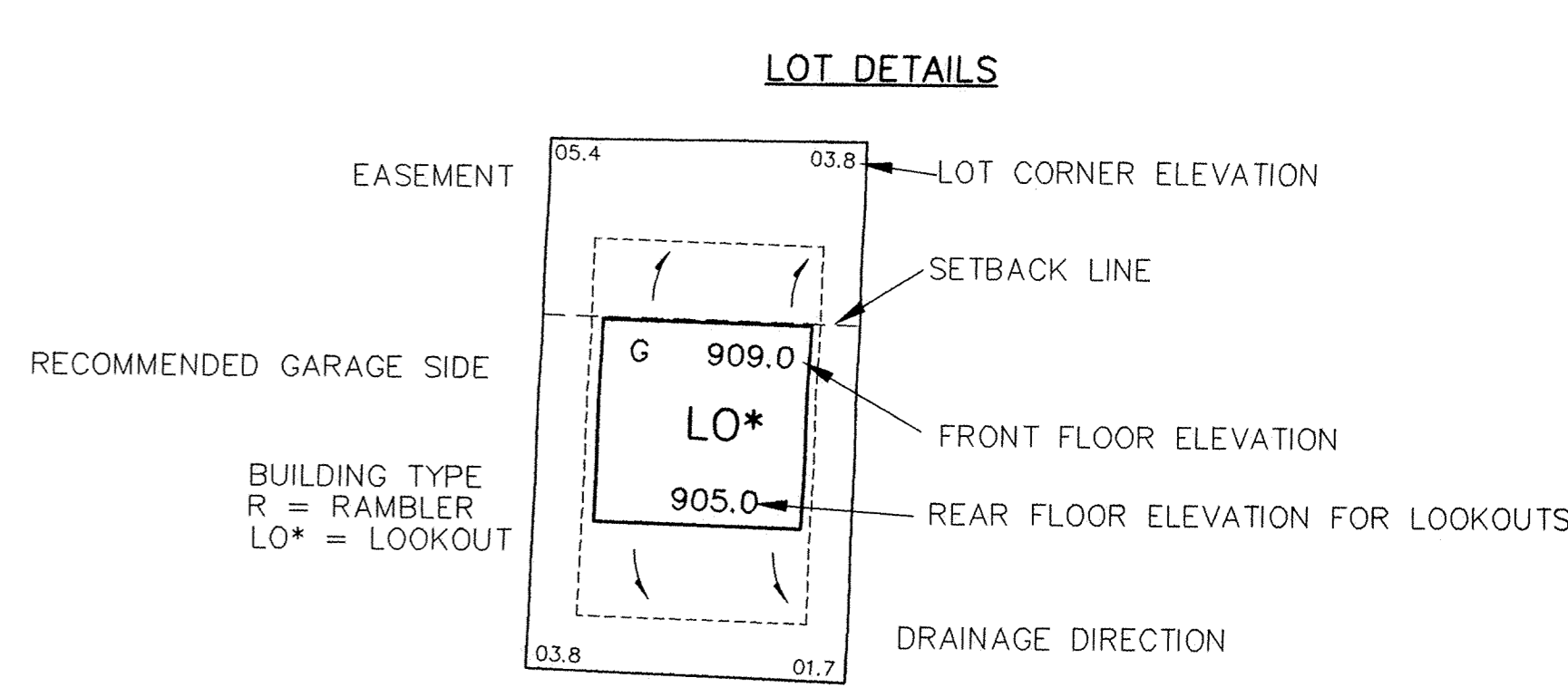
These were changed to be set forward OK per Terry Mauer
 Pond Terry Mauer 9-16-04



KEY
 X 06.5 SPOT ELEVATION
 ——— DRAINAGE DIRECTION



LOT DIMENSIONS



Approved
 John Benner
 12-8-03

P:\000\2004\7-KLIEVER LAKE WEST\Map\2004\7SITE.dwg 2/19/2004 3:55:55 PM CST

PIONEER engineering
 2422 Enterprise Drive
 Mendota Heights, MN 55120
 (612) 88-1947 FAX 681-9488
 622 Highway 10 N.E.
 9506 St. Louis Park
 (763) 763-1060 FAX 763-1883

I hereby certify that this plan was prepared by me or under my direct supervision and that I am a duly Licensed Professional Engineer under the laws of the State of Minnesota.

Name Brian F. Kallio
 Reg. No. 25817 Date 11/25/03

Revisions
 1. 12/8/03
 Date 11/25/03
 Designed BFK
 Drawn BFK

SHEET TITLE SITE DEVELOPMENT PLAN

OWNER CASCADE LAND COMPANY
 555 3RD STREET NW
 ELK RIVER, MINNESOTA 55330

PROJECT ELK MEADOWS
 ELK RIVER

SHEET 2 OF 2 SHEETS

1. Add rear bldg pad elevs. L2-3, B1. Add pad and spot elevs. to lots to east.