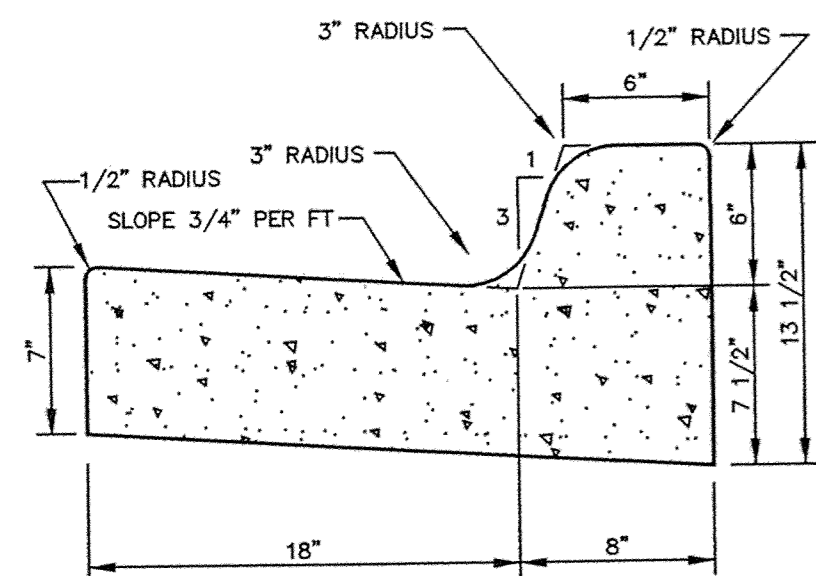
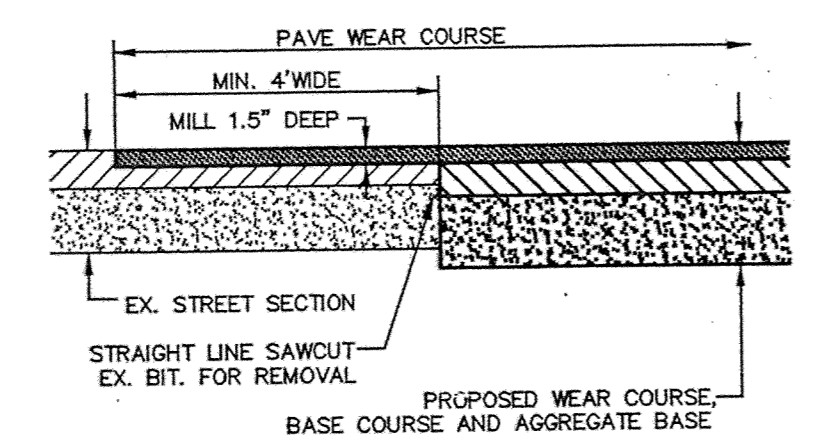
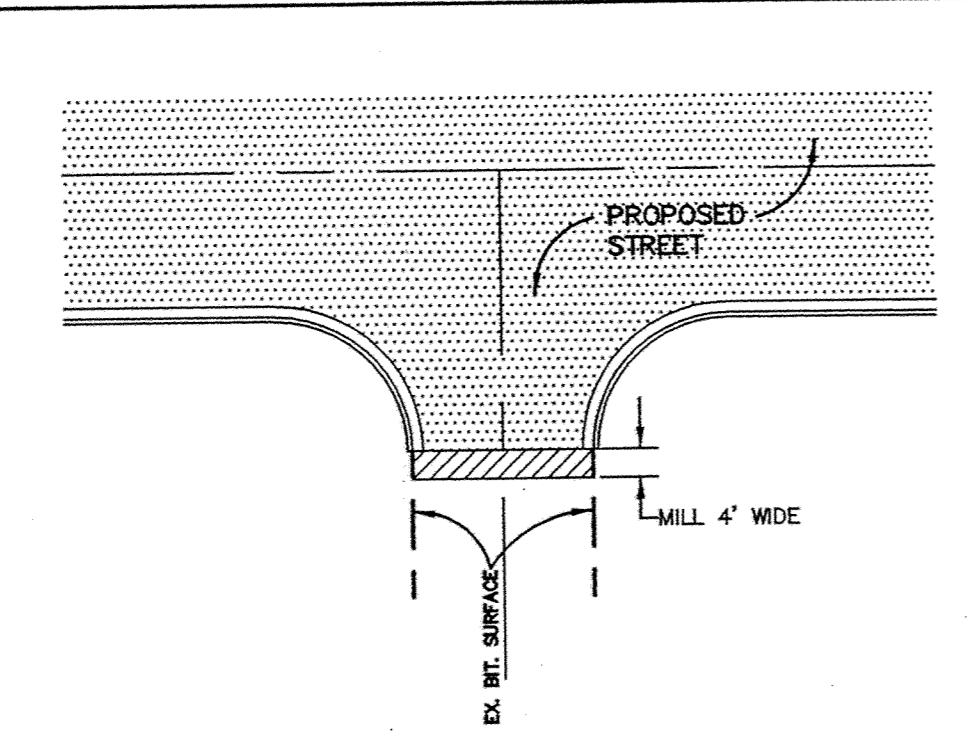


SURMOUNTABLE CONCRETE CURB AND GUTTER

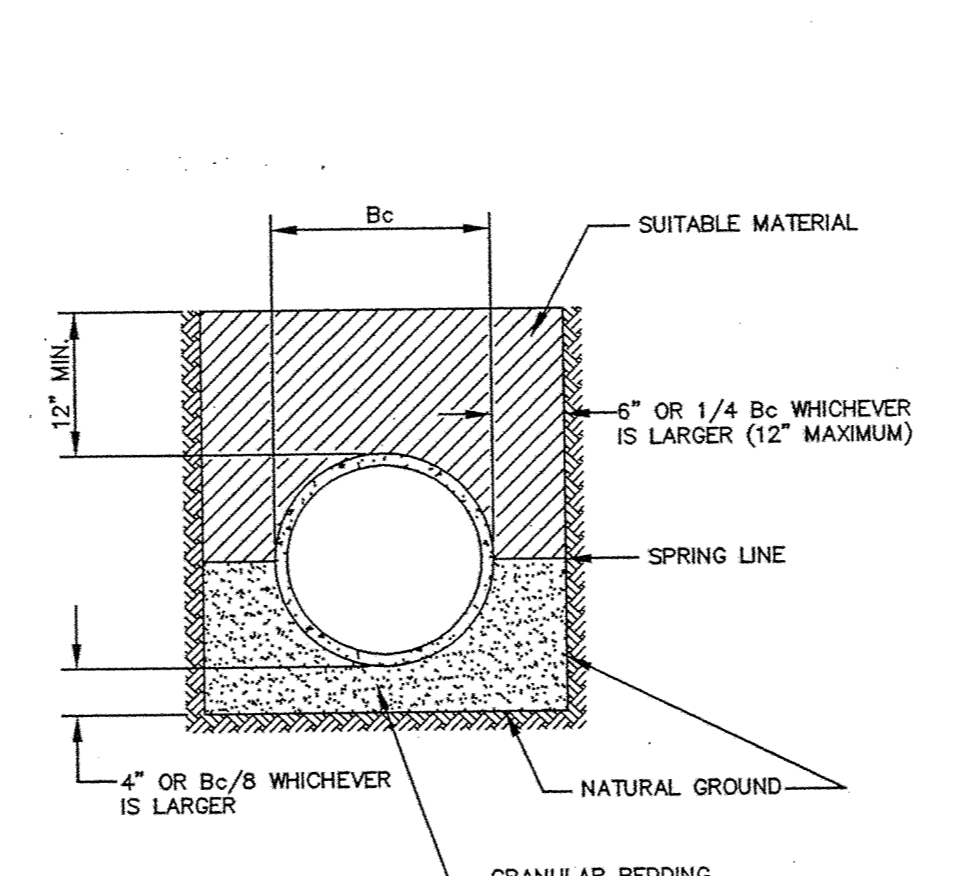


CONCRETE CURB AND GUTTER B618

ERSTD-ST
 SURMOUNTABLE AND B618 CONCRETE CURB AND GUTTER
 City of Elk River
 STANDARD PLATE NO. 2000

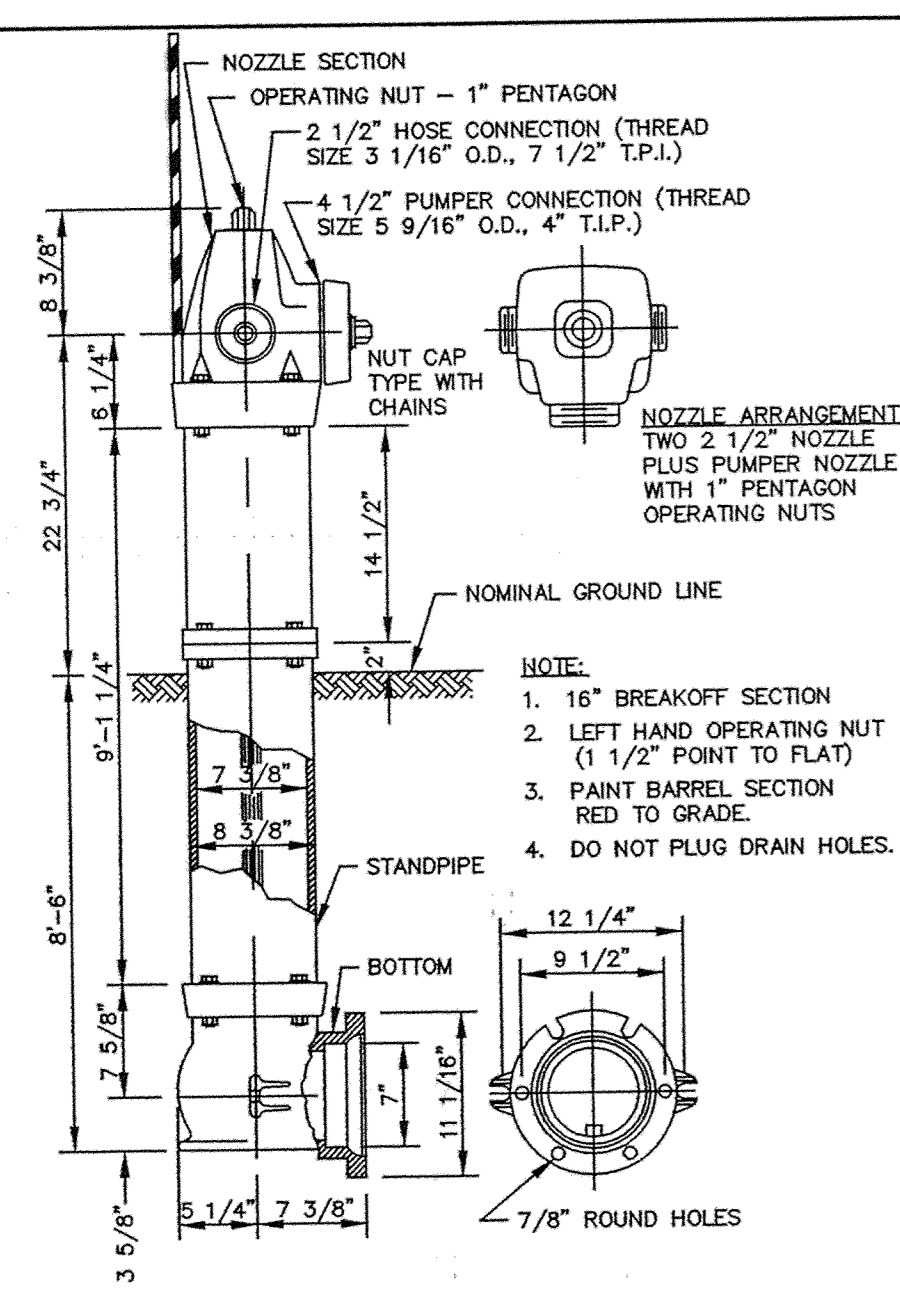


ERSTD-ST
 MATCH EXISTING BITUMINOUS SURFACING
 City of Elk River
 STANDARD PLATE NO. 2006



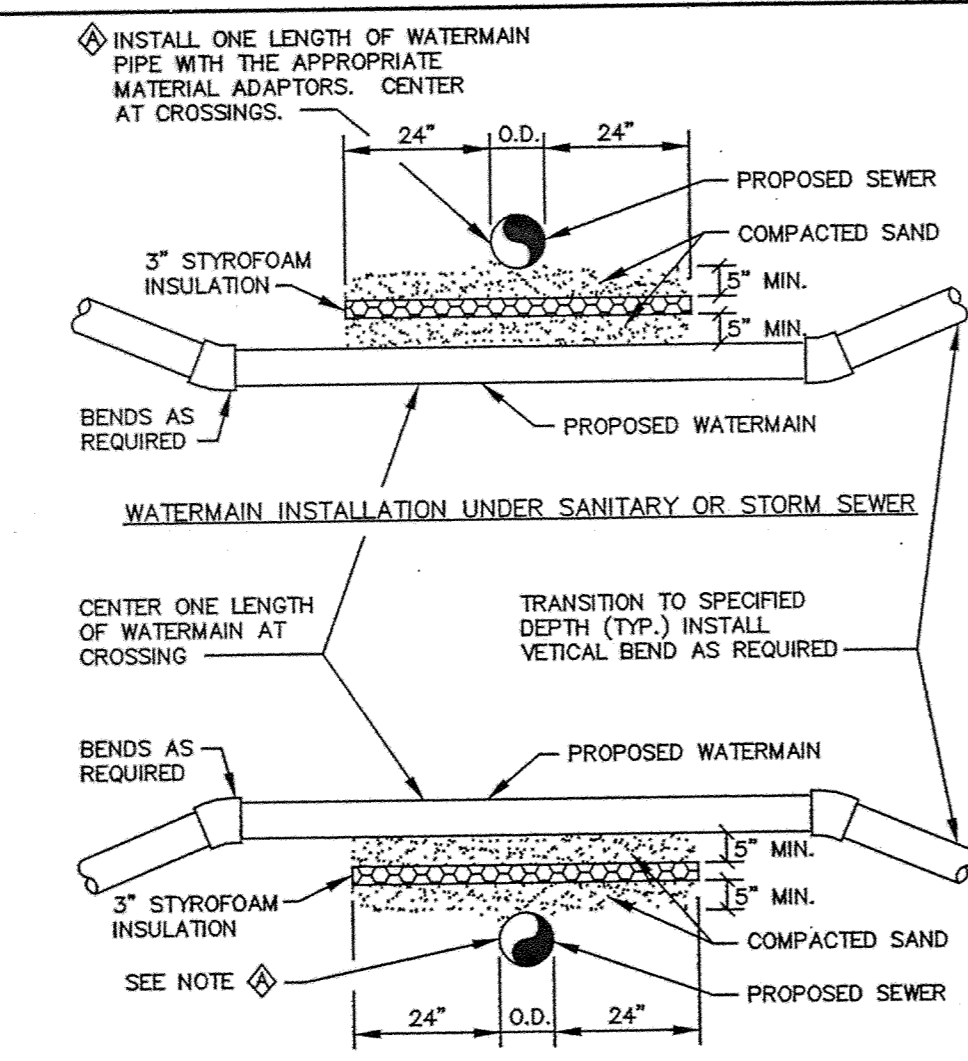
NOTE: ALL COSTS OF EXCAVATION BELOW GRADE AND PLACEMENT OF GRANULAR BEDDING SHALL BE INCLUDED IN THE BID PRICES FOR PIPE ITEMS.

ERSTD-WM
 CLASS B PIPE BEDDING
 City of Elk River
 STANDARD PLATE NO. 3406



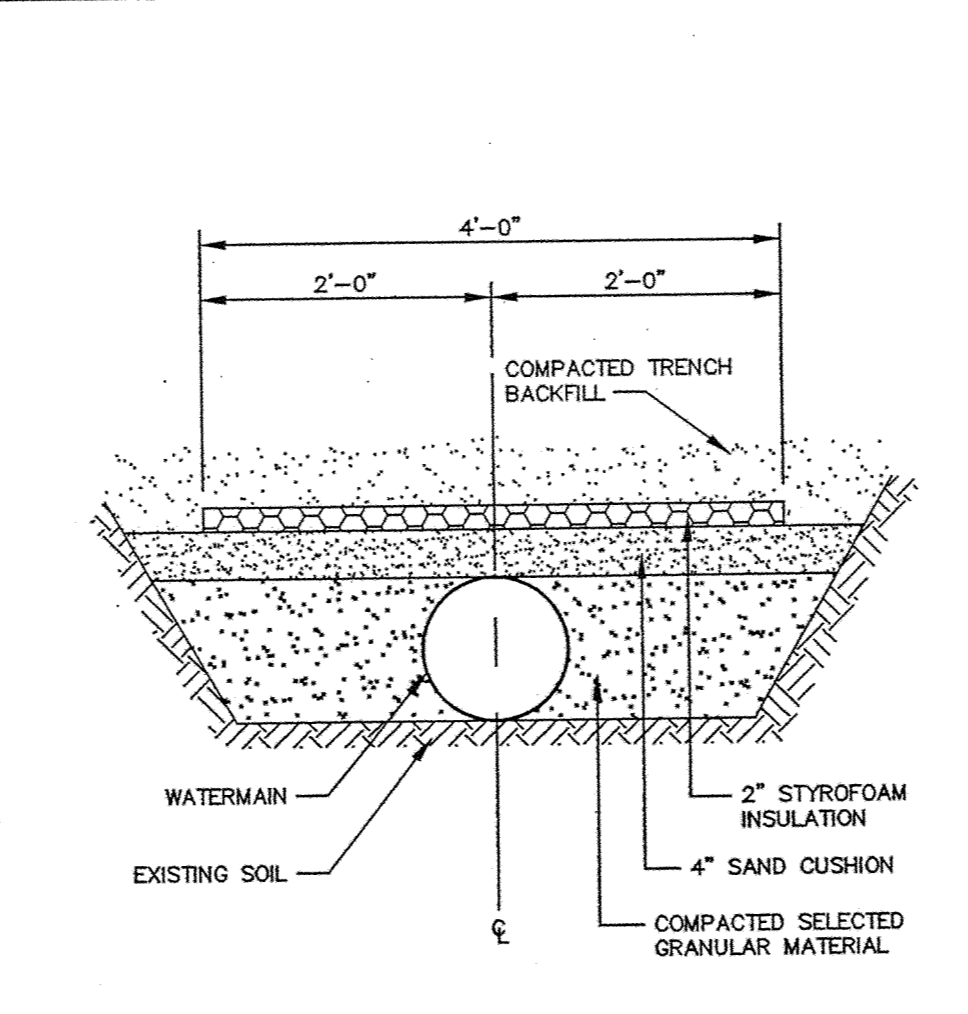
NOTE: HYDRANT LOCATING DEVICES REQUIRED - SEE SPECIFICATIONS.

ERSTD-WM
 PACER HYDRANT DETAIL
 City of Elk River
 STANDARD PLATE NO. 3401



NOTES:
 1. WHEN WATERMAIN AND SANITARY SEWER CROSSINGS HAVE LESS THAN 18" VERTICAL SEPARATION, INSTALL CROSSING AS SHOWN.
 2. WHEN WATERMAIN COVER IS LESS THAN 7.5 FEET, INSTALL WATERMAIN UNDER SANITARY SEWER.

ERSTD-WM
 WATERMAIN CROSSING
 City of Elk River
 STANDARD PLATE NO. 3404



ERSTD-WM
 PIPE INSULATION DETAIL
 City of Elk River
 STANDARD PLATE NO. 3407