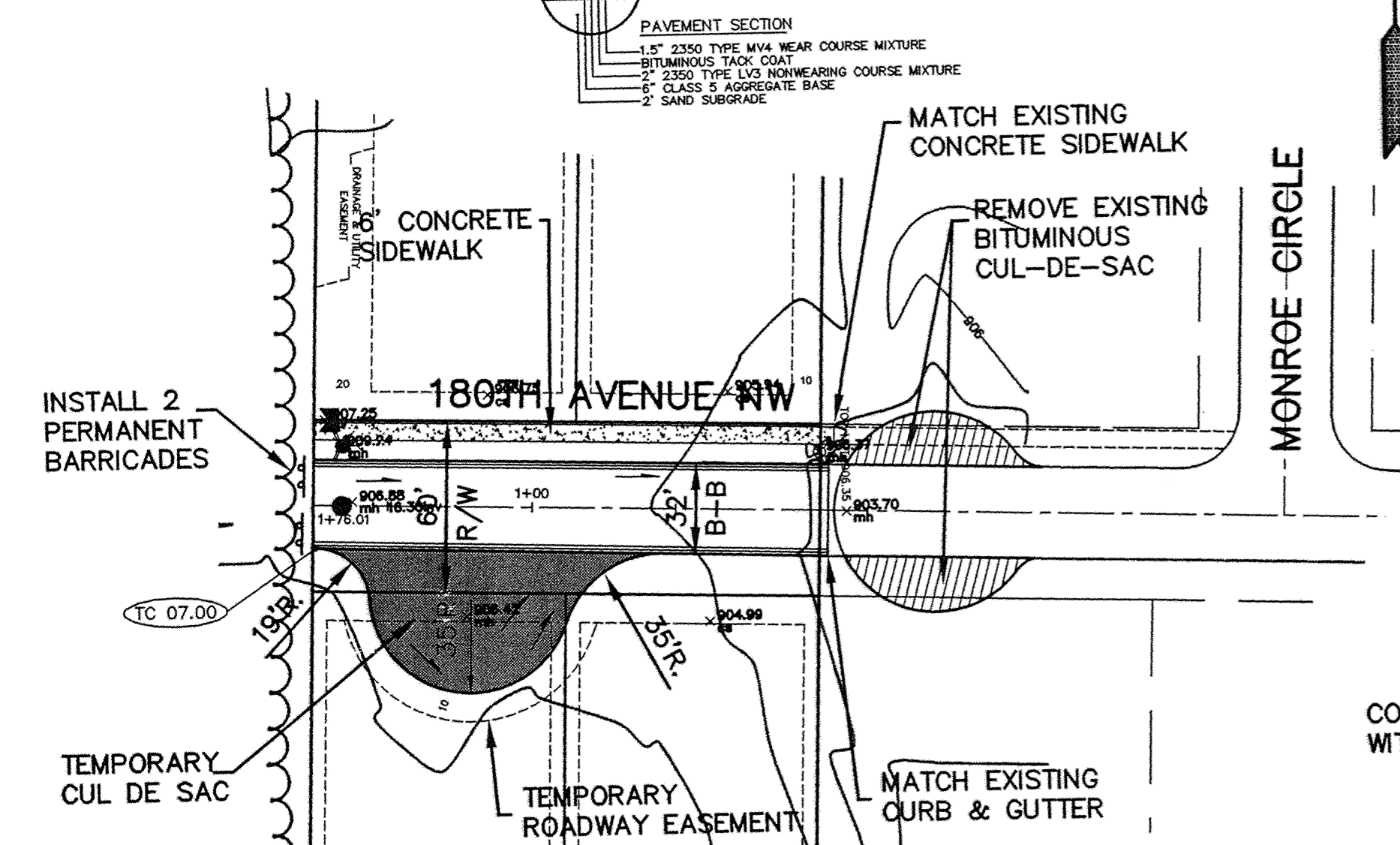
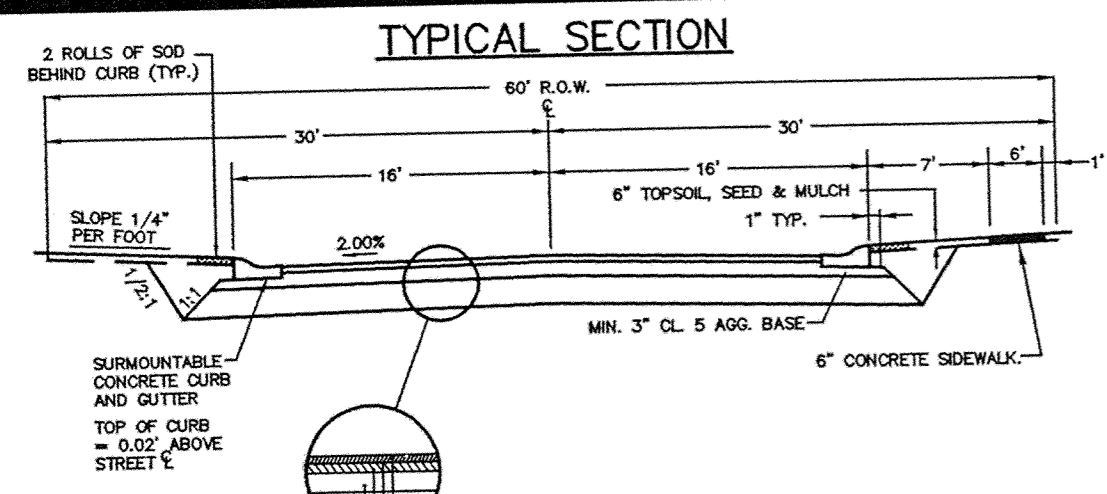
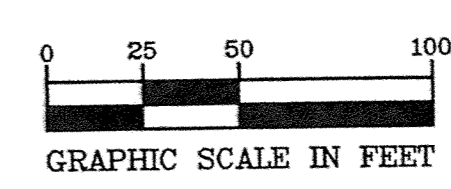


GENERAL NOTES:

- 1.) SANITARY SEWER SERVICES SHALL BE 4" PVC SDR-35.
- 2.) SANITARY SEWER SERVICE WYES ARE STATIONED FROM DOWN STREAM MANHOLE.
- 3.) WATER SERVICES SHALL BE 1" COPPER TYPE "K" W/ 7.5" MINIMUM COVER.
- 4.) SANITARY SEWER INVERTS ARE SHOWN AT THE BEND JUST BEFORE THE RISER PIPE.
- 5.) SANITARY SEWER & WATER SERVICES SHALL BE CONSTRUCTED 10' BEYOND RIGHT-OF-WAY.

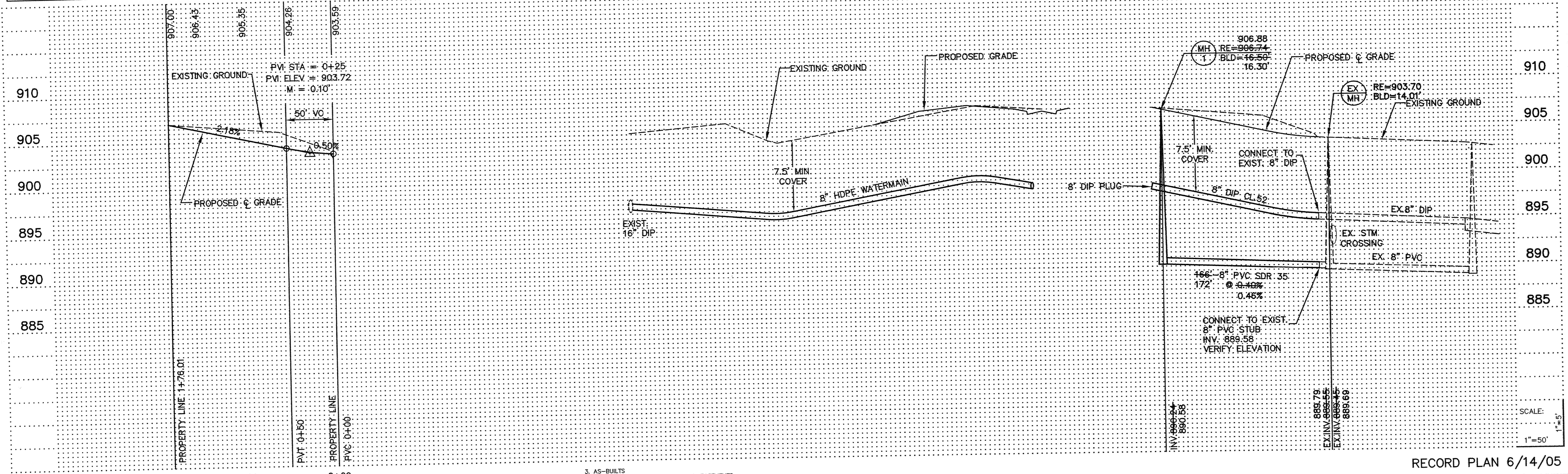
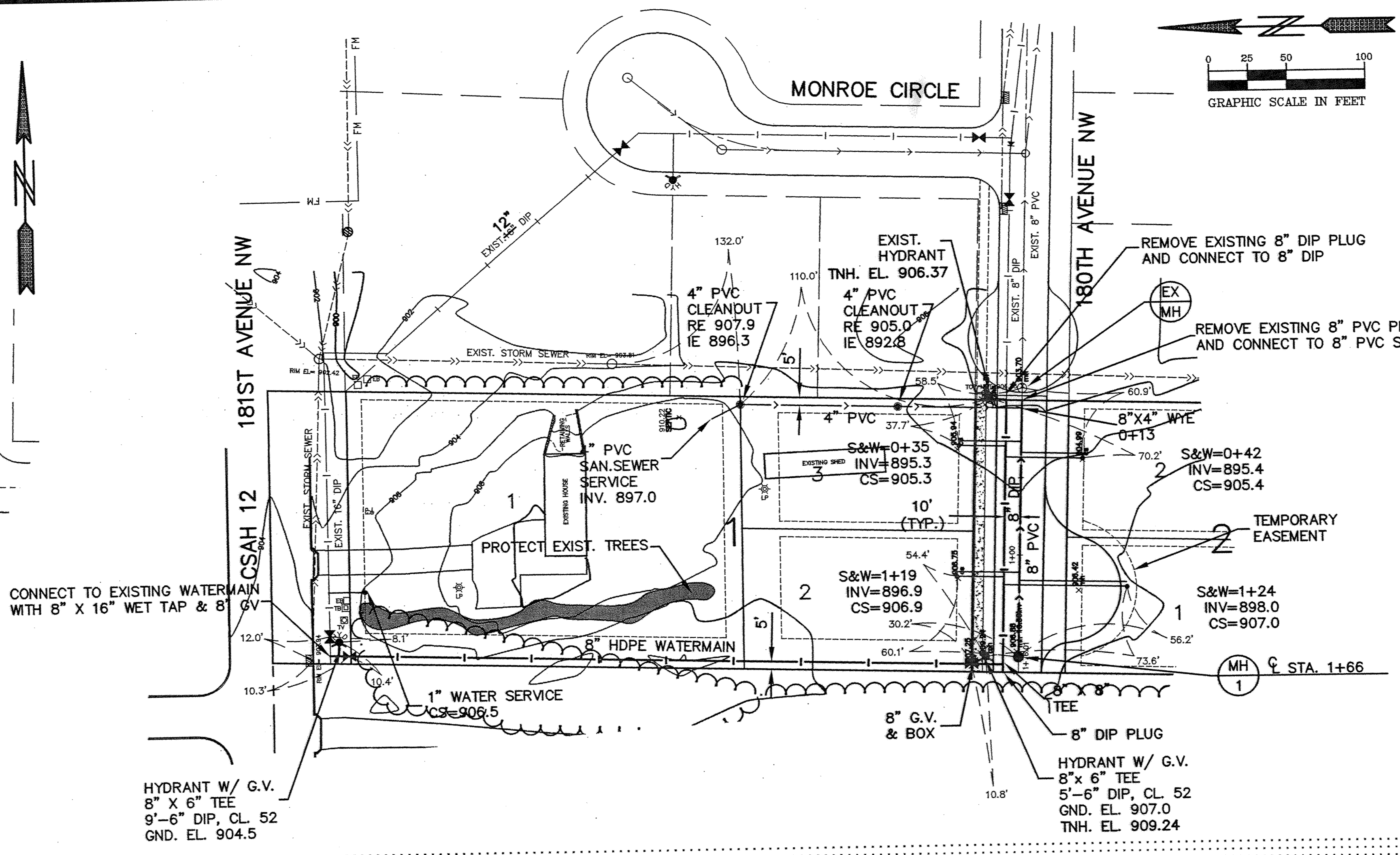


**CURB TYPES**

==== DENOTES SURMOUNTABLE CONCRETE CURB & GUTTER

NOTE: TOP OF CURB ELEV. ARE THE ACTUAL ELEV'S FOR THE TYPE OF CURB SHOWN.

NOTE: ALL DIMENSIONS SHOWN ARE FROM BACK OF CURB TO BACK OF CURB.



3. AS-BUILTS
2. HDPE FORCEMAIN DIAMETER, LABEL EASEMENTS
1. PER CITY ENGINEER COMMENTS.

	2422 Enterprise Drive Minneapolis, MN 55120 (612) 881-1914 FAX: 881-2488 E-mail: info@pioneereng.com Website: www.pioneereng.com (612) 793-1885 FAX: 783-1883	I hereby certify that this plan was prepared by me or under my direct supervision and that I am a duly Licensed Professional Engineer under the laws of the State of Minnesota.	Name: <u>Paul J. Chene</u> Reg. No.: <u>19860</u> Date: <u>12/27/02</u>	Revisions: 1. 2/19/03 2. 3/31/03 3. 6/14/05	Date: <u>12/27/02</u> Designed: <u>BFK</u> Drawn: <u>SAG</u>	SHEET TITLE: <b>STREET &amp; UTILITY CONSTRUCTION</b>	OWNER: <b>CASCADE LAND COMPANY</b> 555 3RD STREET NW ELK RIVER, MINNESOTA 55330	PROJECT: <b>ELK MEADOWS</b>	SHEET <b>2</b> OF <b>4</b> SHEETS
	RECORD PLAN 6/14/05								

SAFCO PRODUCTS • NEW HAVEN, CONNECTICUT  
 PREPARED BY PART NUMBER 0020  
 ELKME02  
 SAFCO PRODUCTS • NEW HAVEN, CONNECTICUT  
 PREPARED BY PART NUMBER 0020  
 ELKME02  
 SAFCO PRODUCTS • NEW HAVEN, CONNECTICUT  
 PREPARED BY PART NUMBER 0020  
 ELKME02