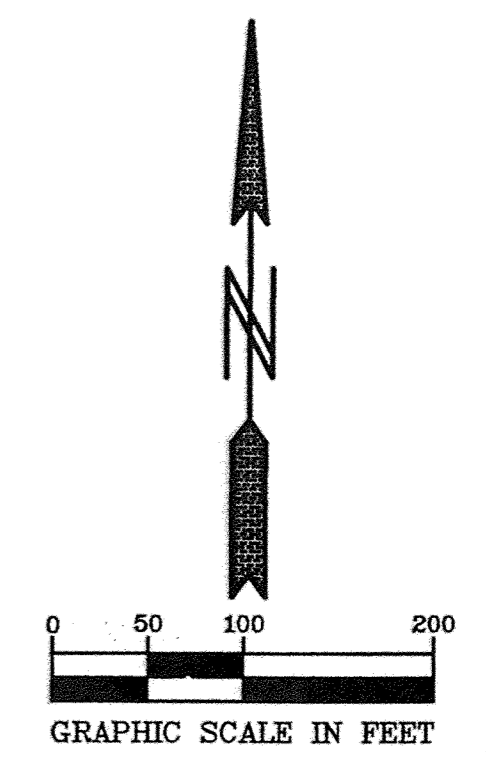
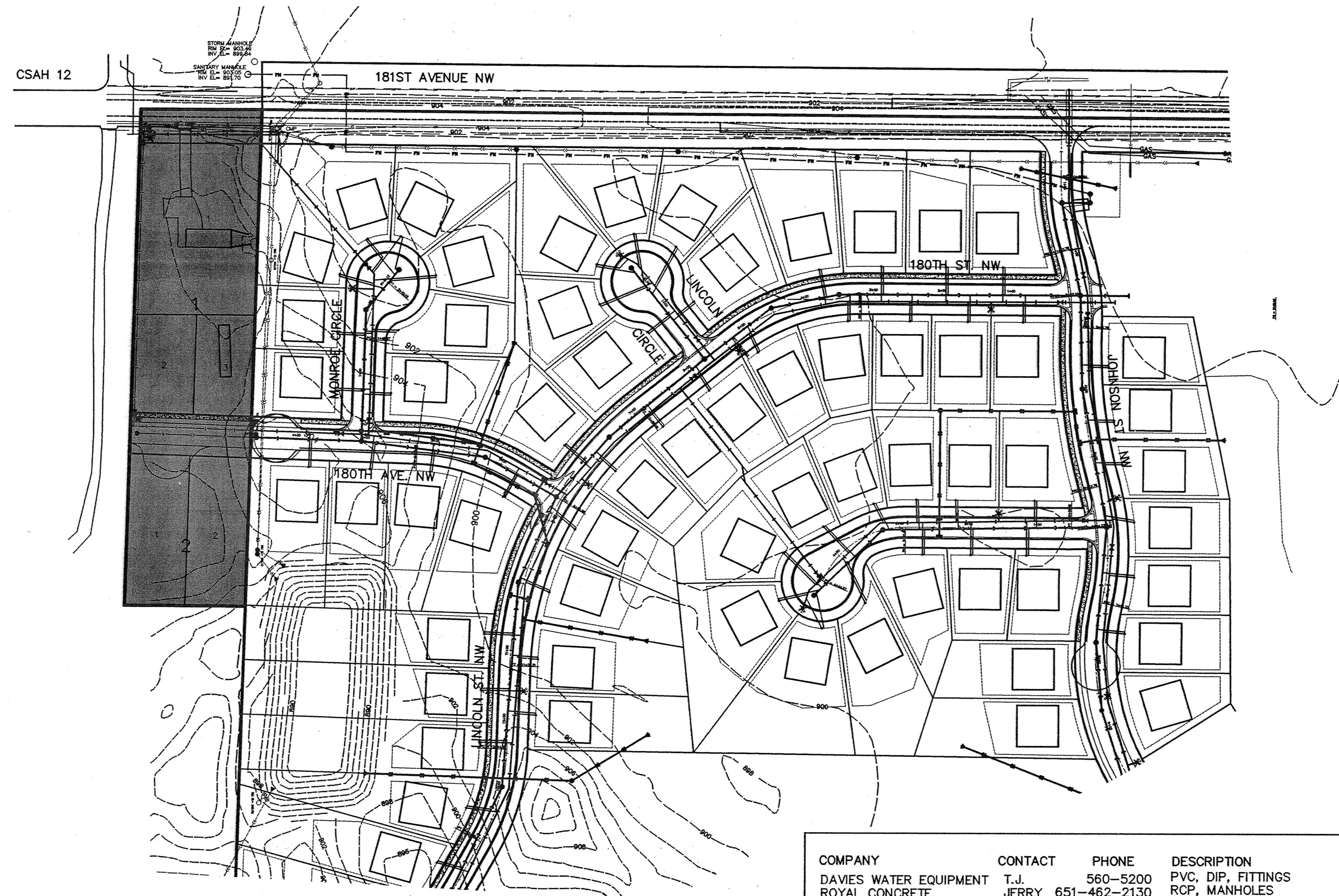
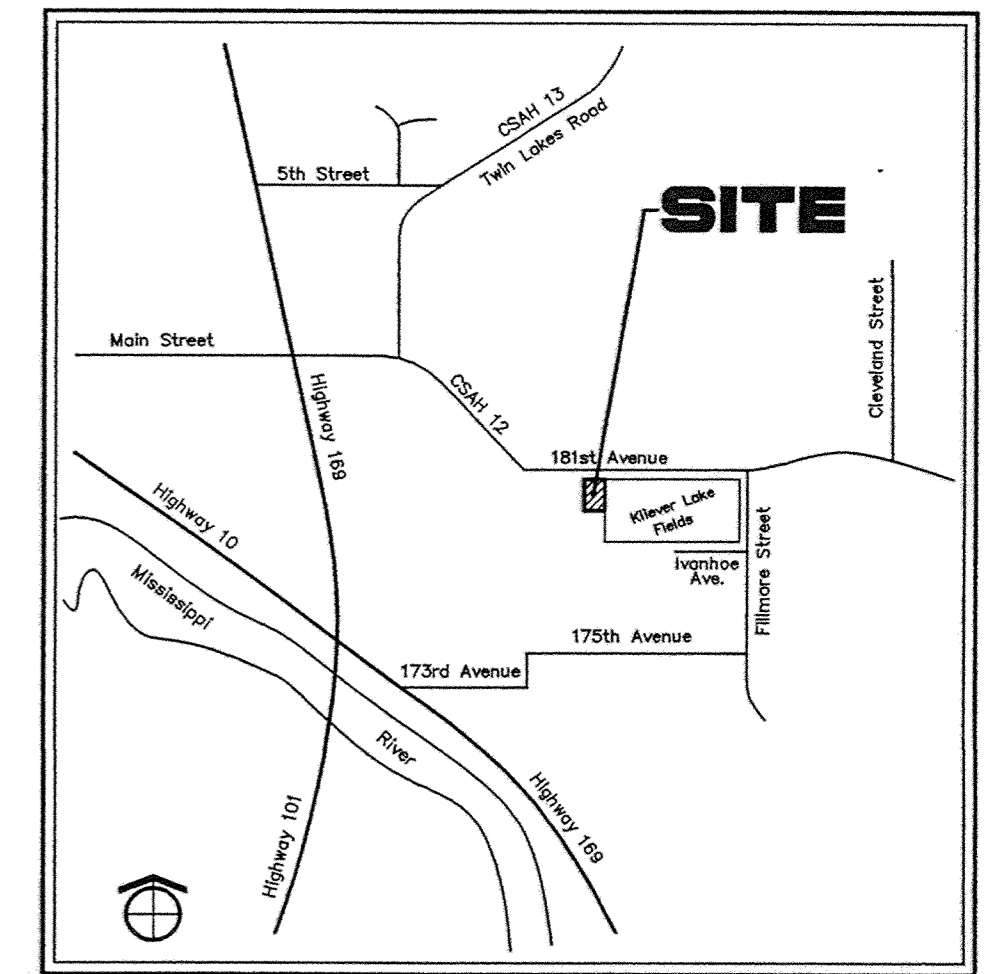


Elk Meadows

Elk River, Minnesota

Street and Utility Construction Plans

LOCATION MAP



INDEX

1. COVER SHEET
2. STREET & UTILITY CONSTRUCTION
3. DETAILS
4. DETAILS

COMPANY	CONTACT	PHONE	DESCRIPTION
DAVIES WATER EQUIPMENT	T.J.	560-5200	PVC, DIP, FITTINGS
ROYAL CONCRETE	JERRY	651-462-2130	RCP, MANHOLES
NORTHERN TRAFFIC	PAUL	576-1200	STREET SIGNS
ESS BROTHERS	TROY	478-2027	CASTINGS
AGGREGATE INDUSTRIES	MATT	651-683-0600	CLASS 5, RIP RAP
BARTON SAND&GRAVEL	CHUCK	425-4191	ROCK BEDDING
SUB CONTRACTORS			
COMPANY	CONTACT	PHONE	DESCRIPTION
MIDWEST BORINGS	JEFF	263-8665	BORINGS
MN STATE CURB	RAY	952-432-7132	CRUB&GUTTER
NORTH VALLEY	BRAD	425-2988	ASPHALT, DIRECTIONAL BORE ELECTRICAL, SOD, STRIPPING

BENCHMARKS

Double spike East face of power pole, West side of Fillmore Street N.W., 50± ft. South of 178th Avenue N.W.. Elevation = 897.82 ft.

Triple spike East face of power pole, NW Quadrant of Fillmore Street and 175th Avenue N.W.. Elevation = 909.73 ft.

RECORD PLAN 6/14/05

Prior to any excavation the contractor shall verify the location of all underground utilities.
 Call 48 Hours before digging:
 GOPHER STATE ONE CALL
 Twin City Area 454-0002
 Mn Toll Free 1-800-252-1166

J:\p02\02147-ELK RIVER LAKE WEST.dwg 2/19/2003 3:08:18 PM CST

PIONEER engineering P.A.
 LAND SURVEYORS • CIVIL ENGINEERS
 LAND PLANNERS • LANDSCAPE ARCHITECTS

2422 Enterprise Drive
 Mendota Heights, MN 55120
 (612) 885-1514 FAX: 651-9488
 629 Highway 132 E.
 Burnsville, MN 56005
 (763) 755-1960 FAX: 763-1883

I hereby certify that this plan was prepared by me or under my direct supervision and that I am a duly Licensed Professional Engineer under the laws of the State of Minnesota

Name: *Paul J. Cherna*
 Paul J. Cherna
 Reg. No. 19860 Date 12/27/02

2. AS-BUILTS
 1. SHEET 2.
 Revisions
 1. 2/19/03
 2. 6/14/05

Date 12/27/02
 Designed: BRK
 Drawn: SAG

SHEET TITLE

COVER SHEET

OWNER: CASCADE LAND COMPANY
 555 3RD STREET NW
 ELK RIVER, MINNESOTA 55330

PROJECT

ELK MEADOWS

SHEET 1 OF 4 SHEETS