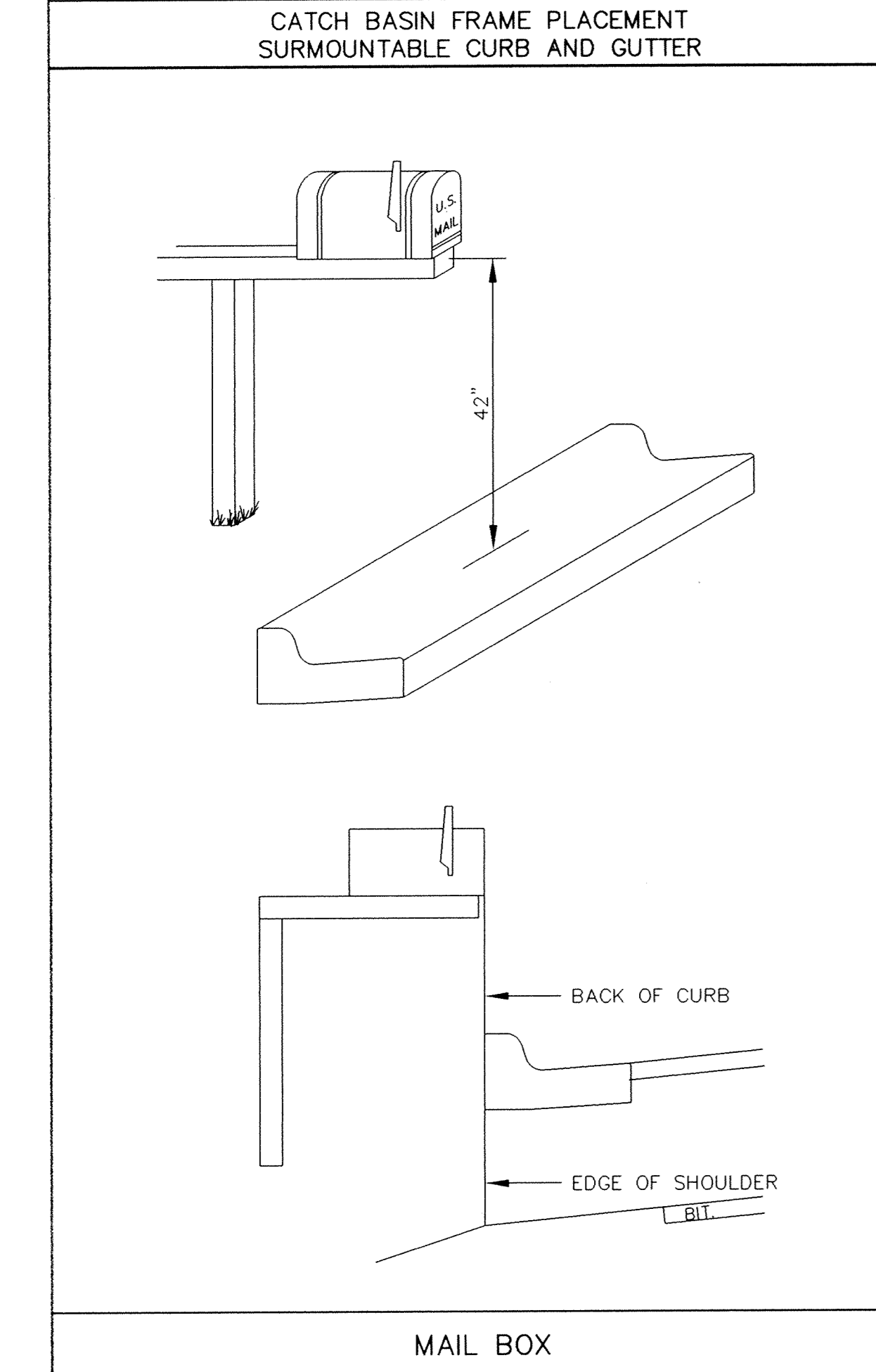
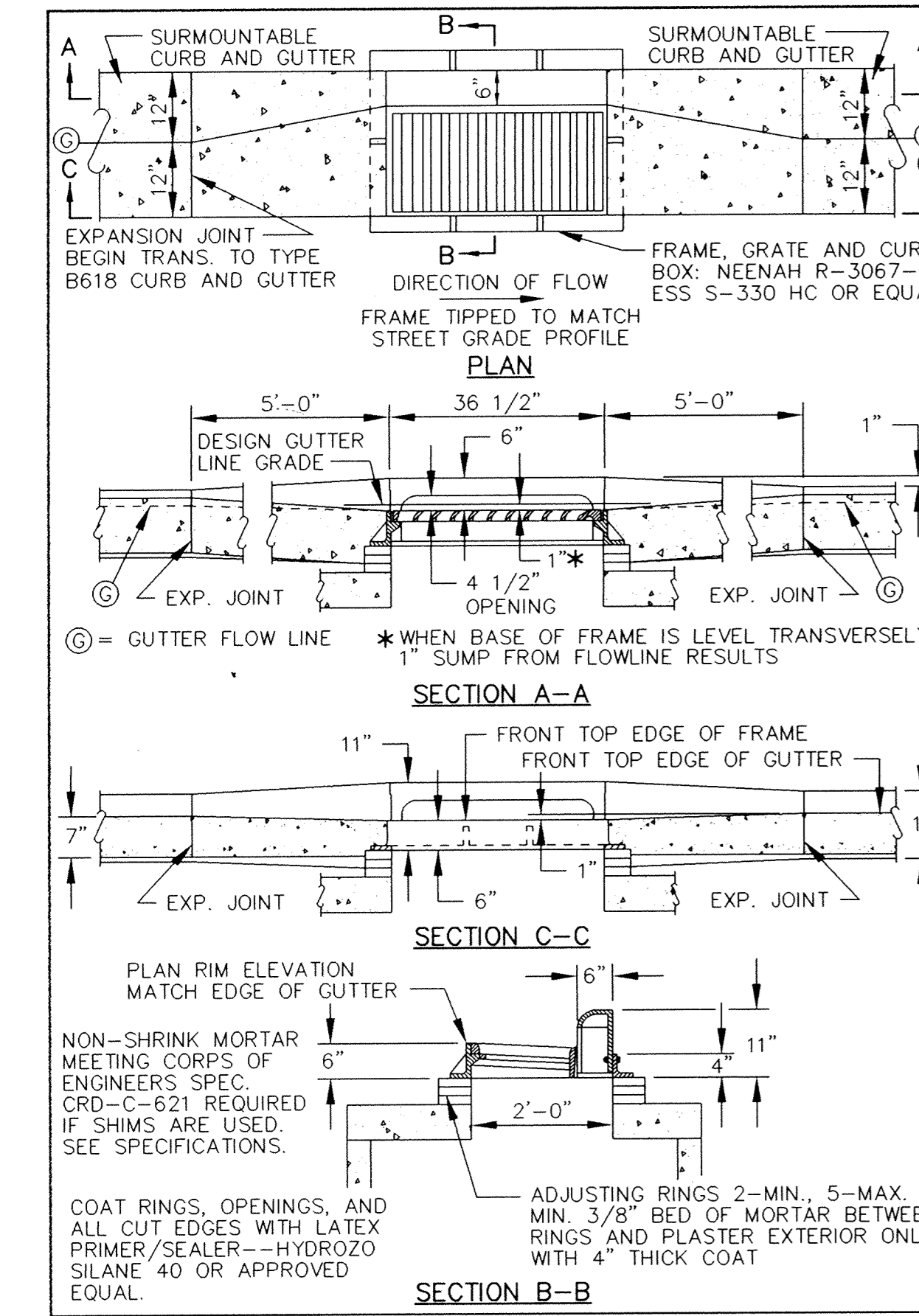
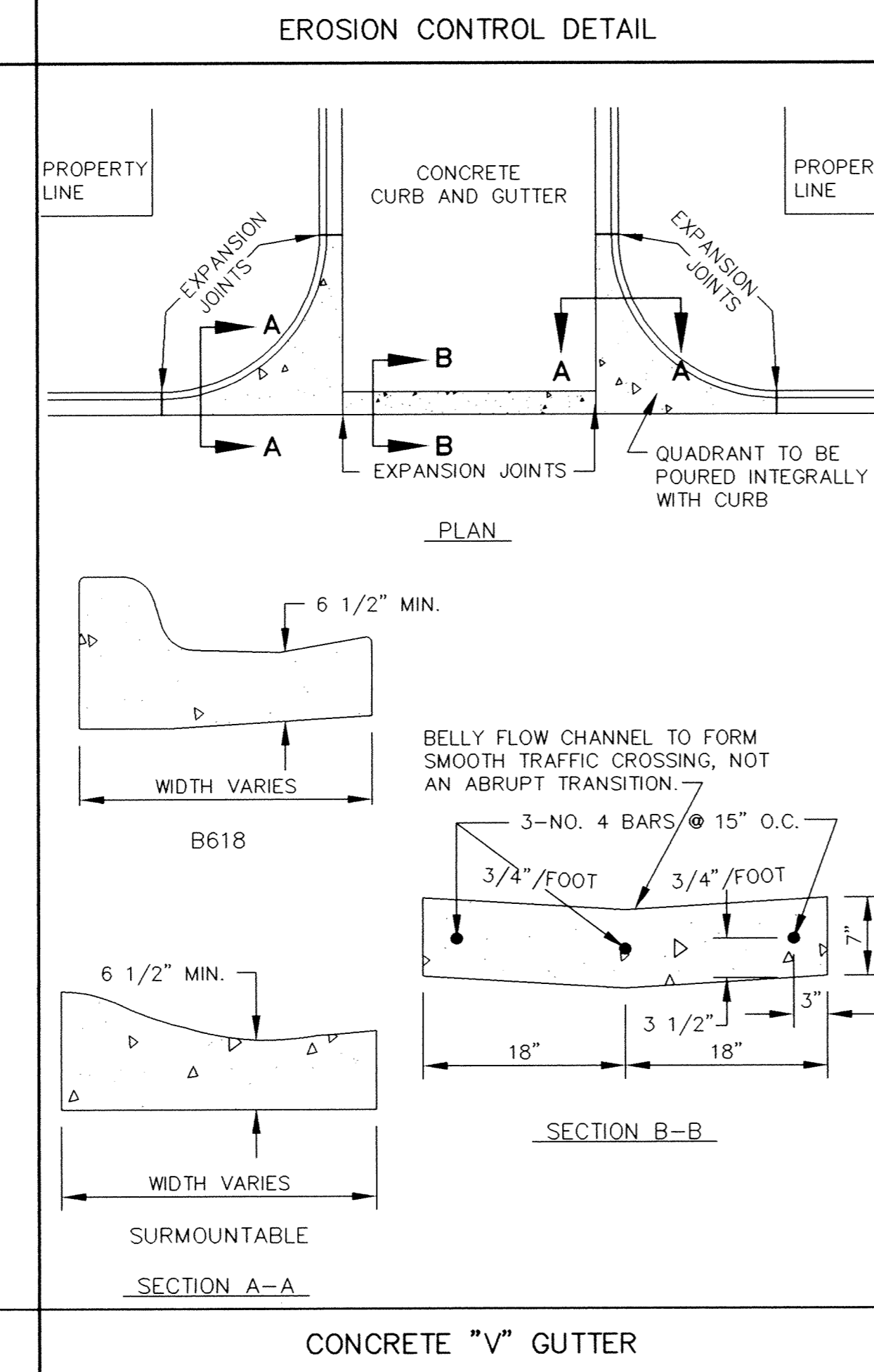
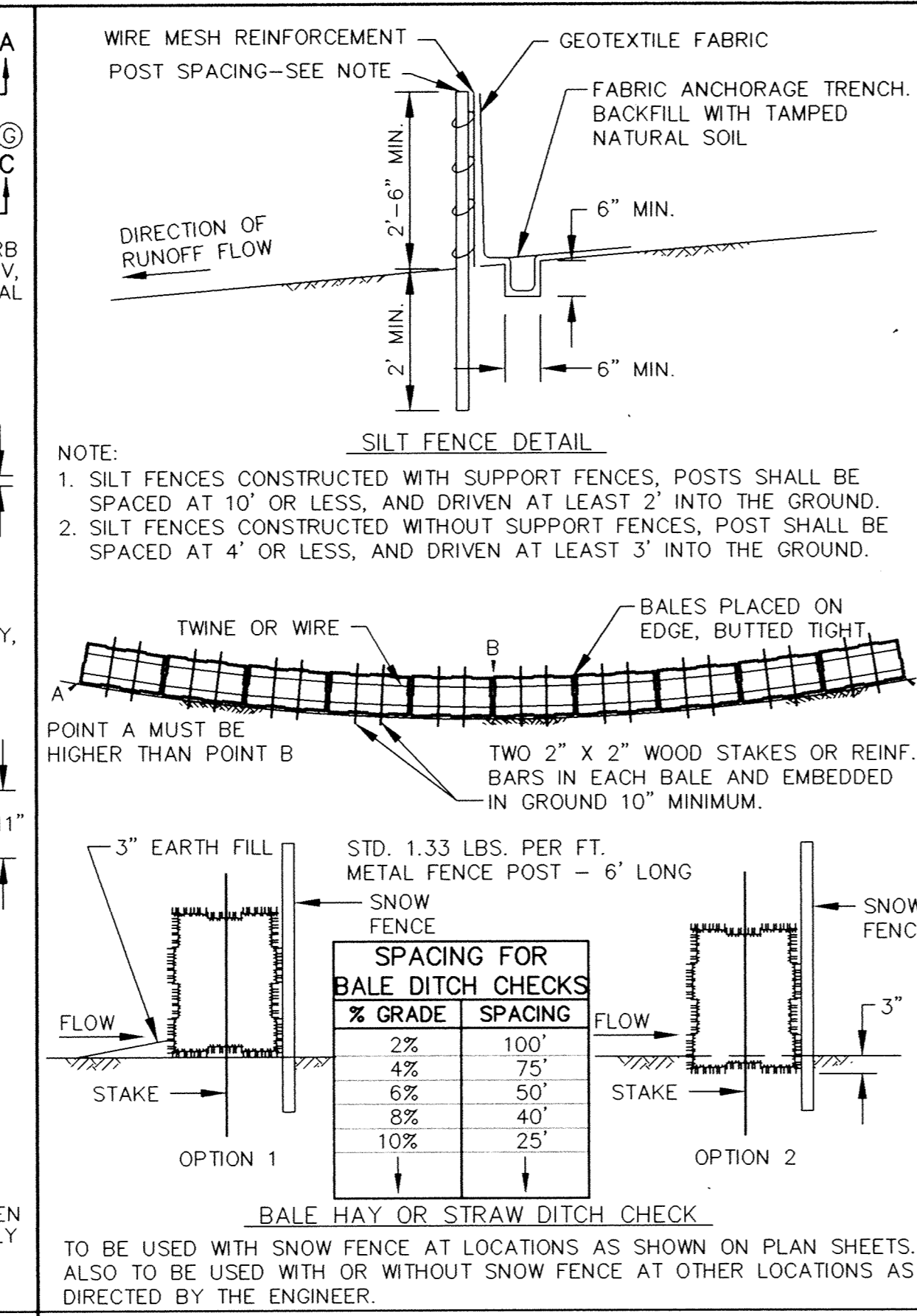
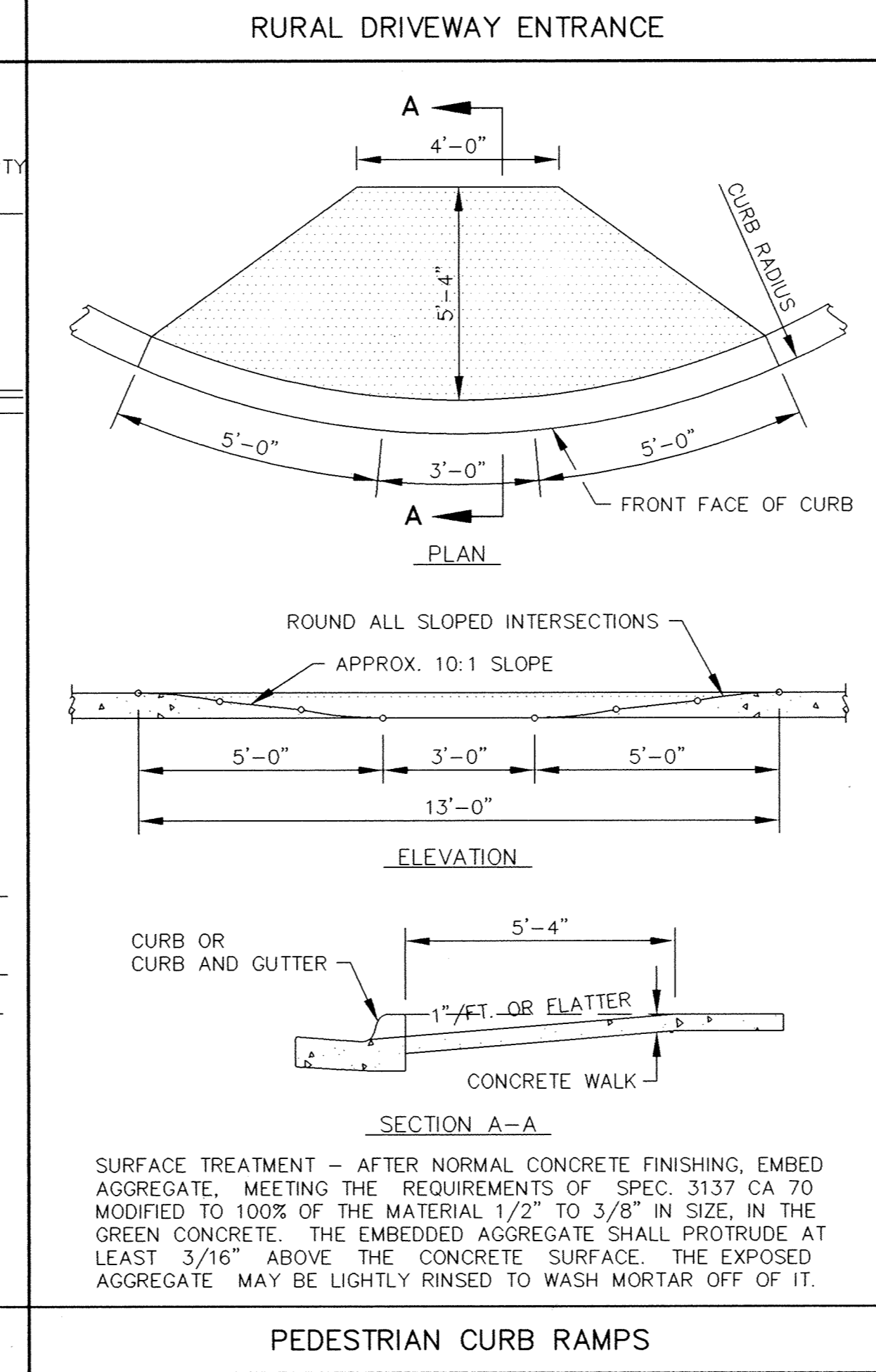
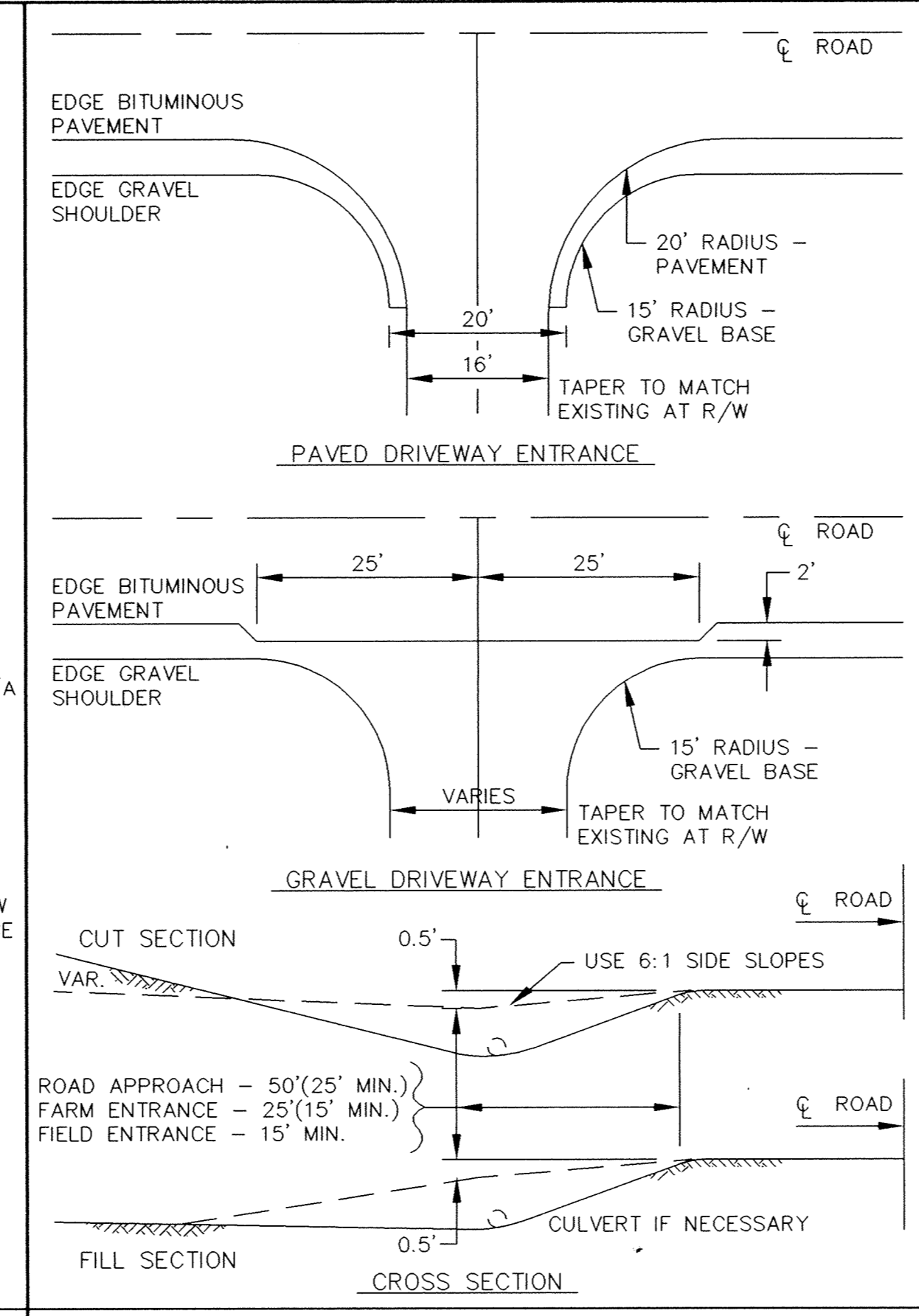
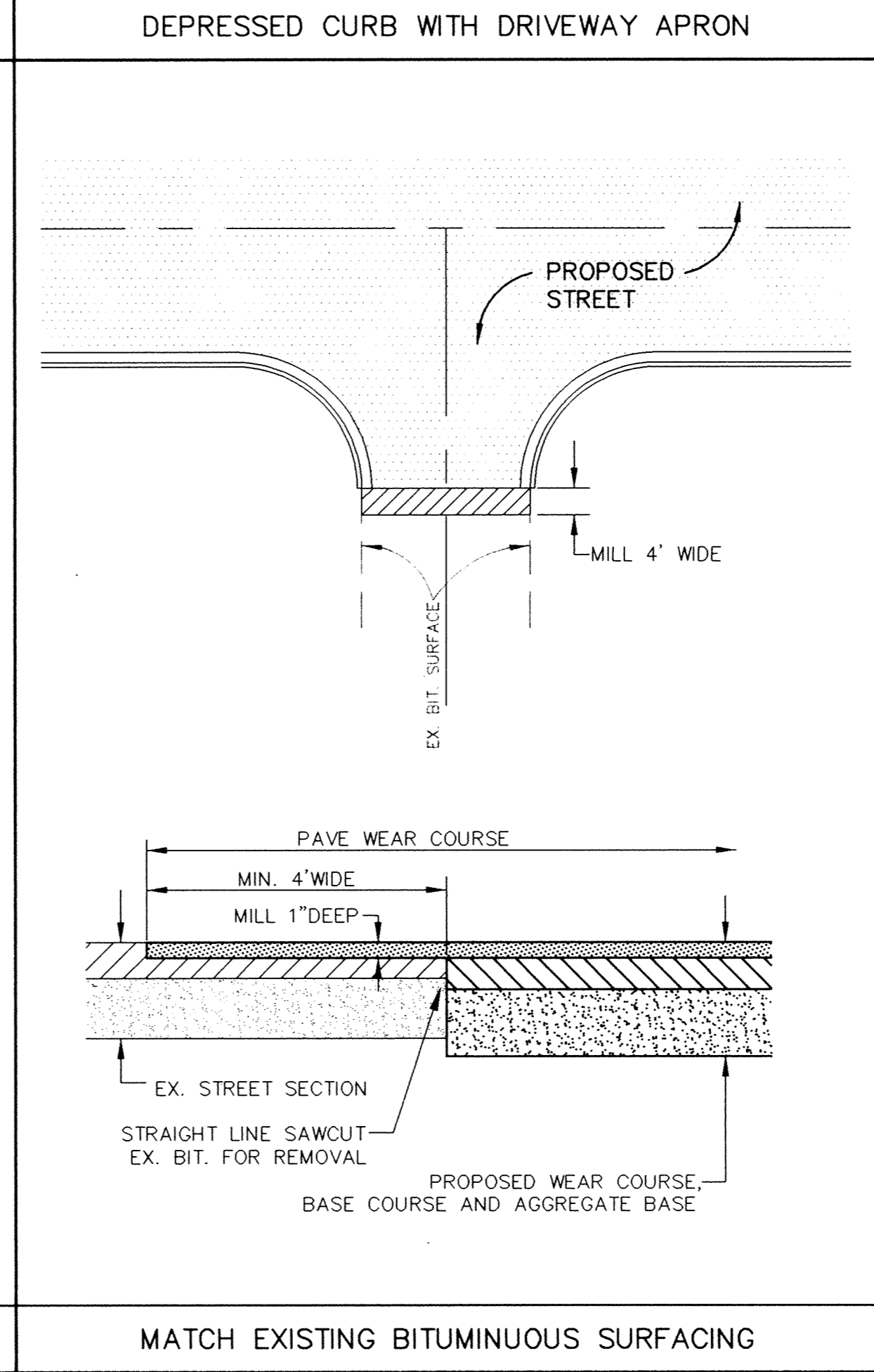
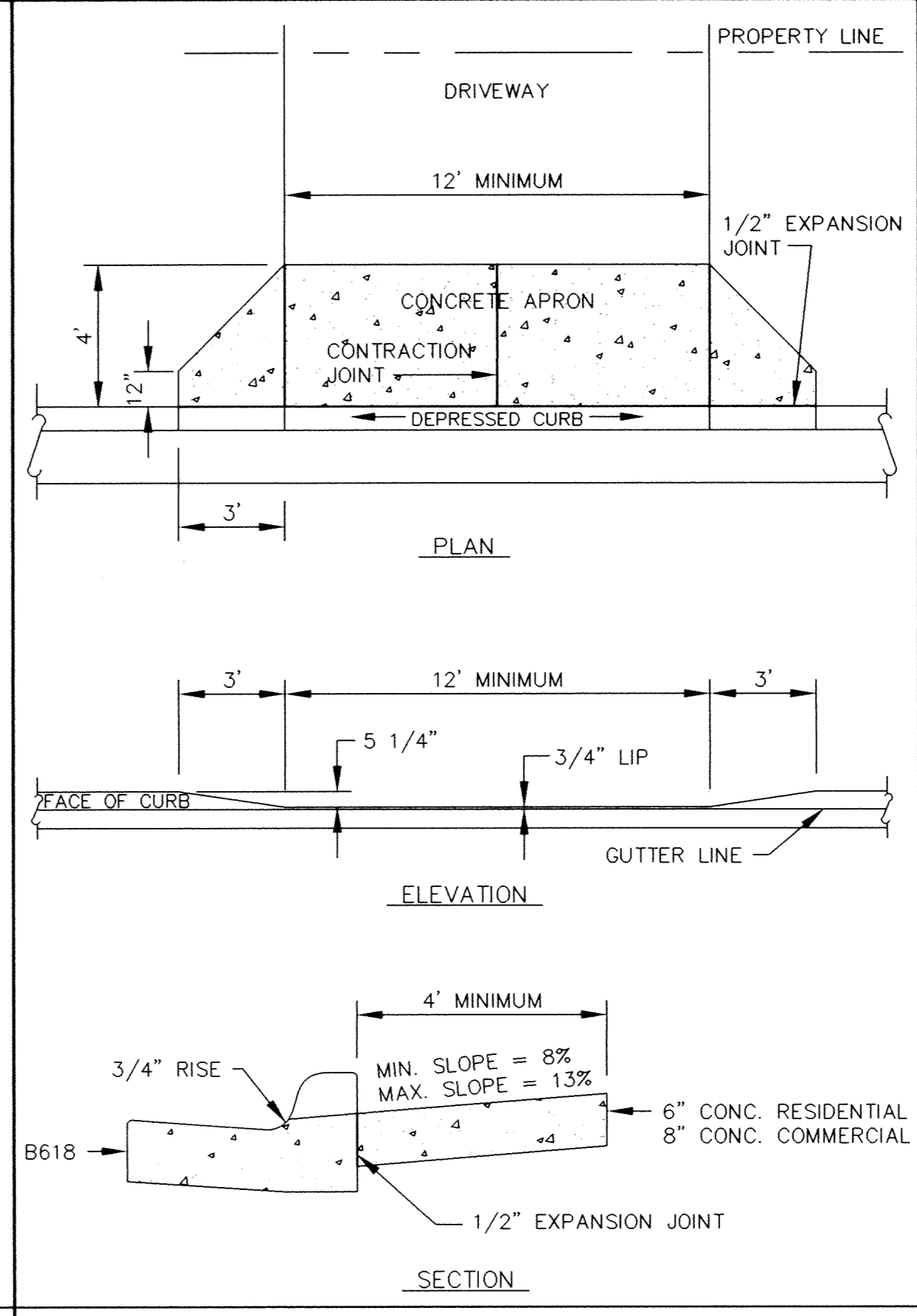
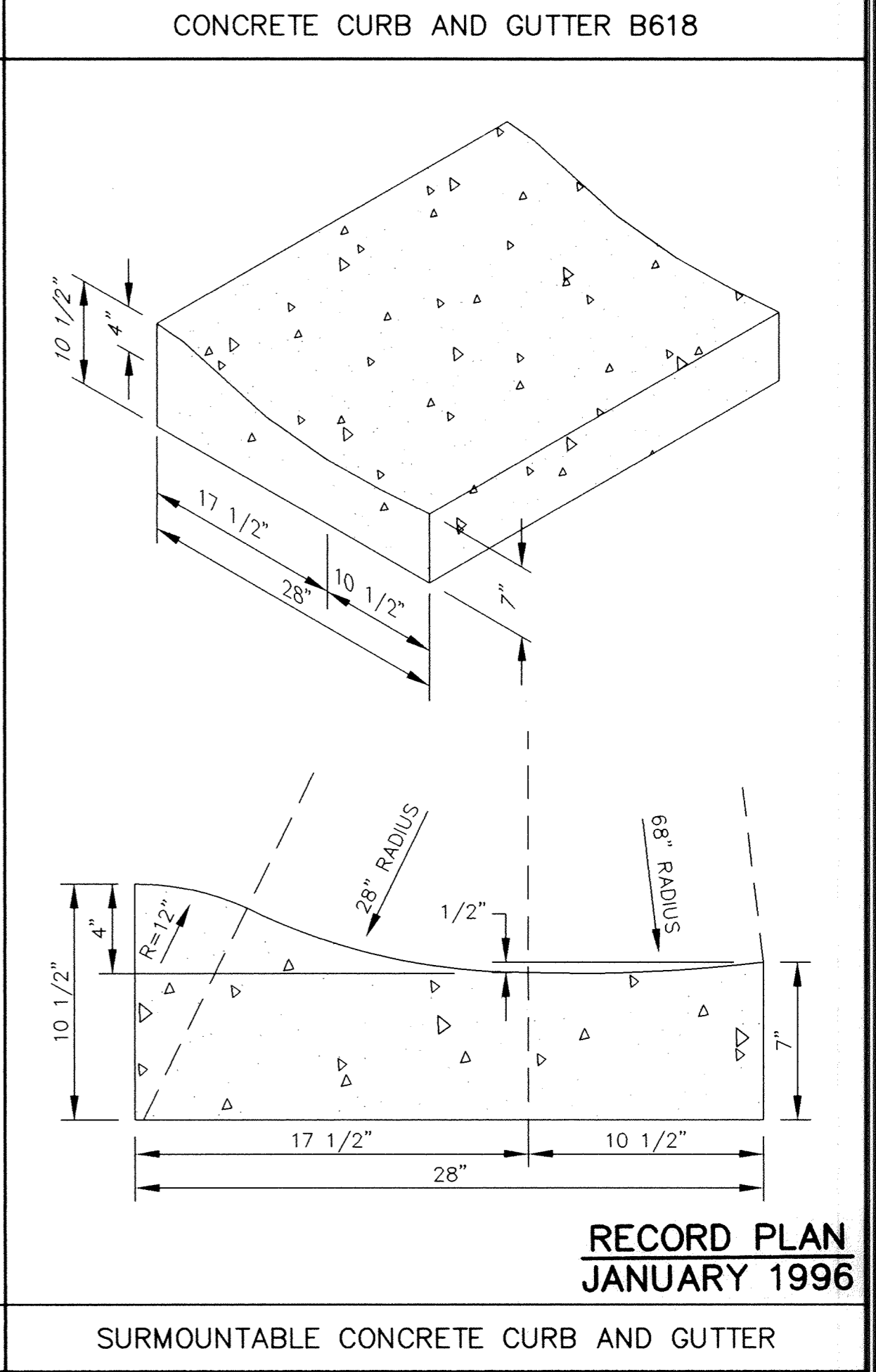
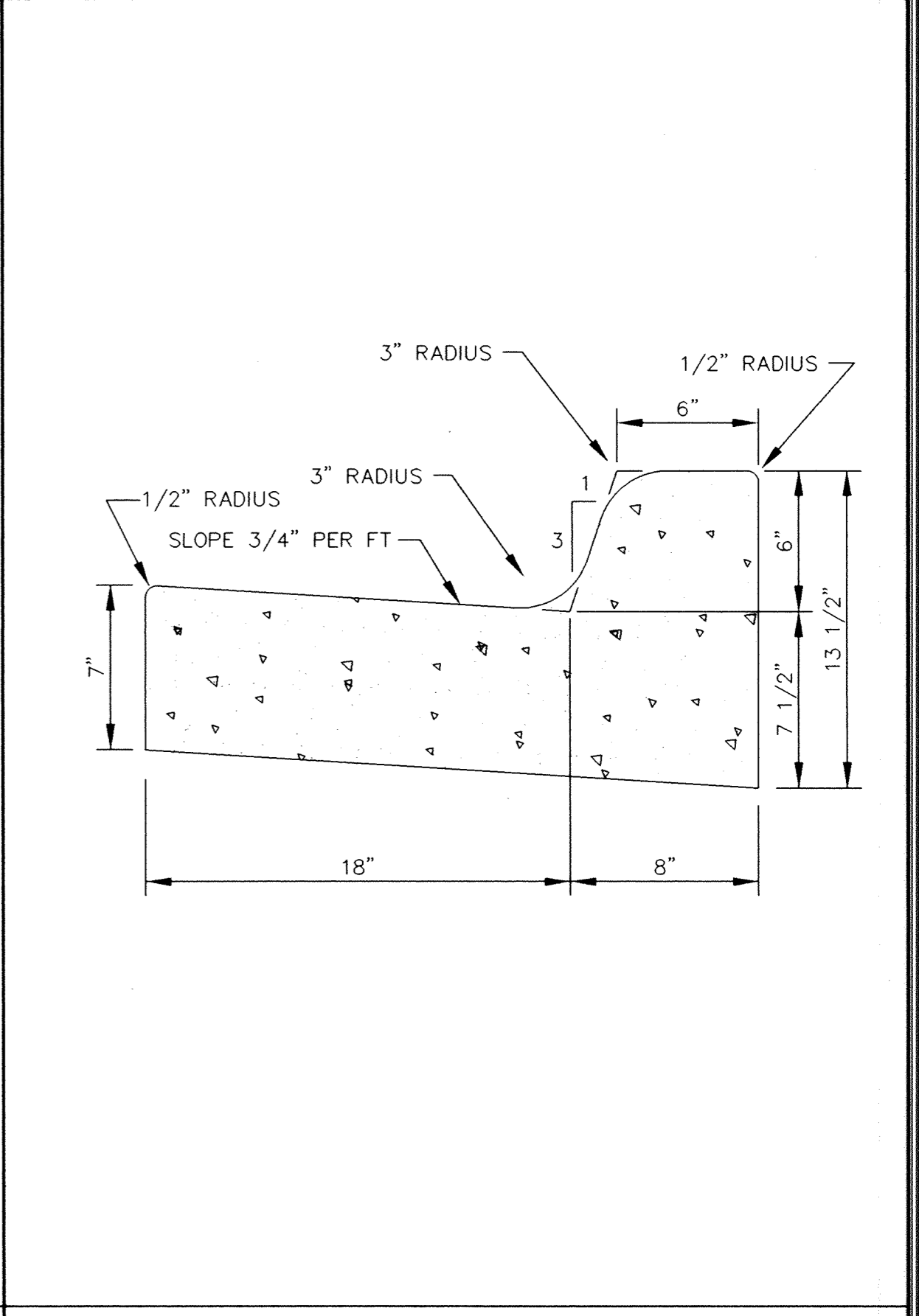


SAFECO PRODUCTS • NEW HOPE, MINNESOTA
MEMBER BY DRAW NUMBER 8502
SAFECO PRODUCTS • NEW HOPE, MINNESOTA
MEMBER BY DRAW NUMBER 8502
SAFECO PRODUCTS • NEW HOPE, MINNESOTA
MEMBER BY DRAW NUMBER 8502



ER246DST

I HEREBY CERTIFY THAT THIS PLAN, SPECIFICATION, OR REPORT WAS PREPARED BY ME OR UNDER MY DIRECT SUPERVISION AND THAT I AM A DULY REGISTERED PROFESSIONAL ENGINEER UNDER THE LAWS OF THE STATE OF MINNESOTA.

Cynthia J. Blomdy
DATE 7/31/95 REG. NO. 24082

MSA CONSULTING ENGINEERS

1326 ENERGY PARK DRIVE
ST. PAUL, MINNESOTA 55108
(612) 644-4389

5075 WAYZATA BLVD. SUITE #225
MINNEAPOLIS, MINNESOTA 55416
(612) 546-0432

DATE	DESCRIPTION	DESIGNED
		CHEKED [Signature]
		DRAWN [Signature]

GRAPHIC SCALE
0 HORIZ. N/A
0 VERT. 5

CITY OF ELK RIVER
ELK HILLS DRIVE/DODGE STREET IMPROVEMENTS

STREET CONSTRUCTION DETAILS

DATE JULY 1995 SHEET 22 OF 22 SHEETS PROJECT NO. 230-246

793 807