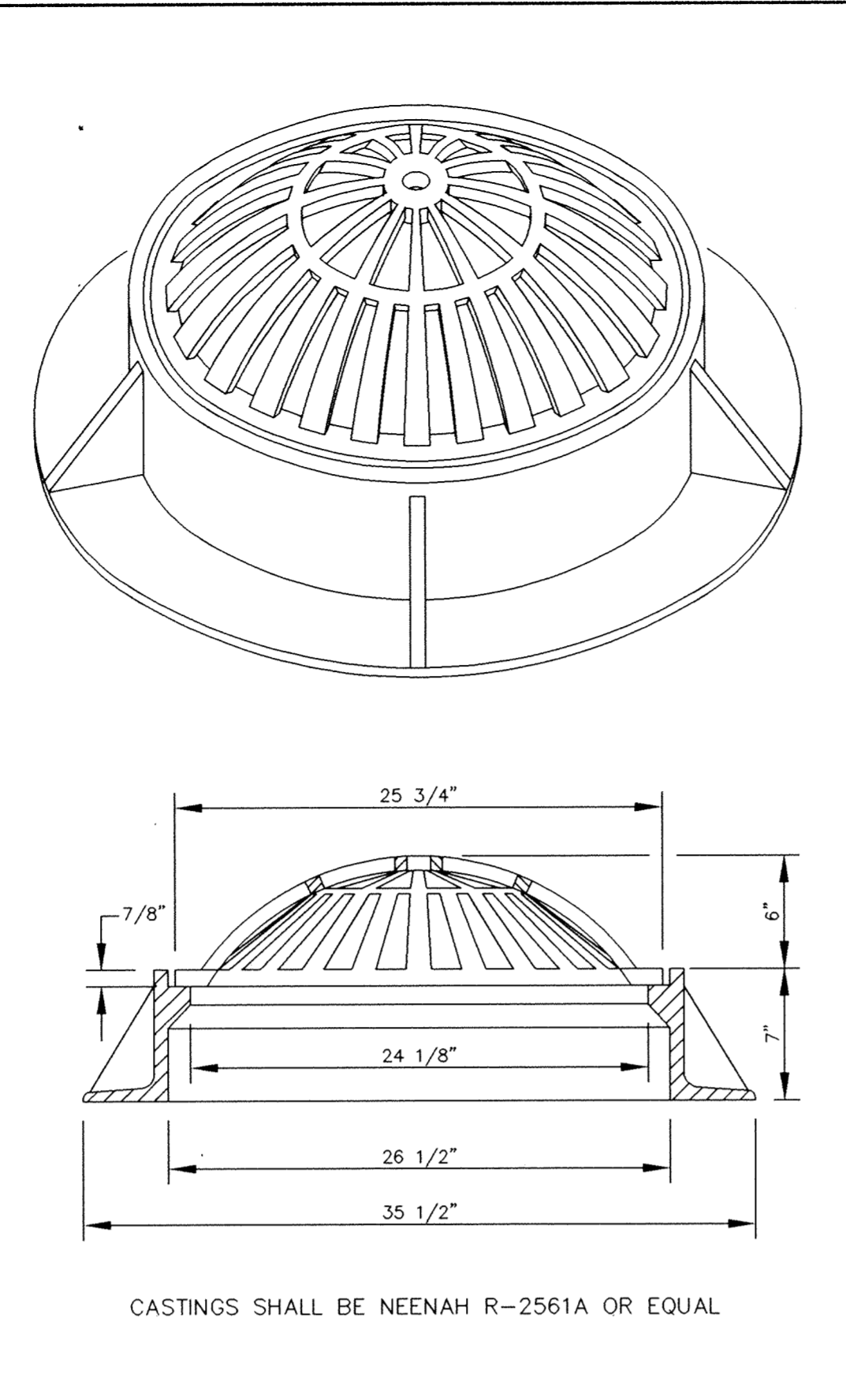
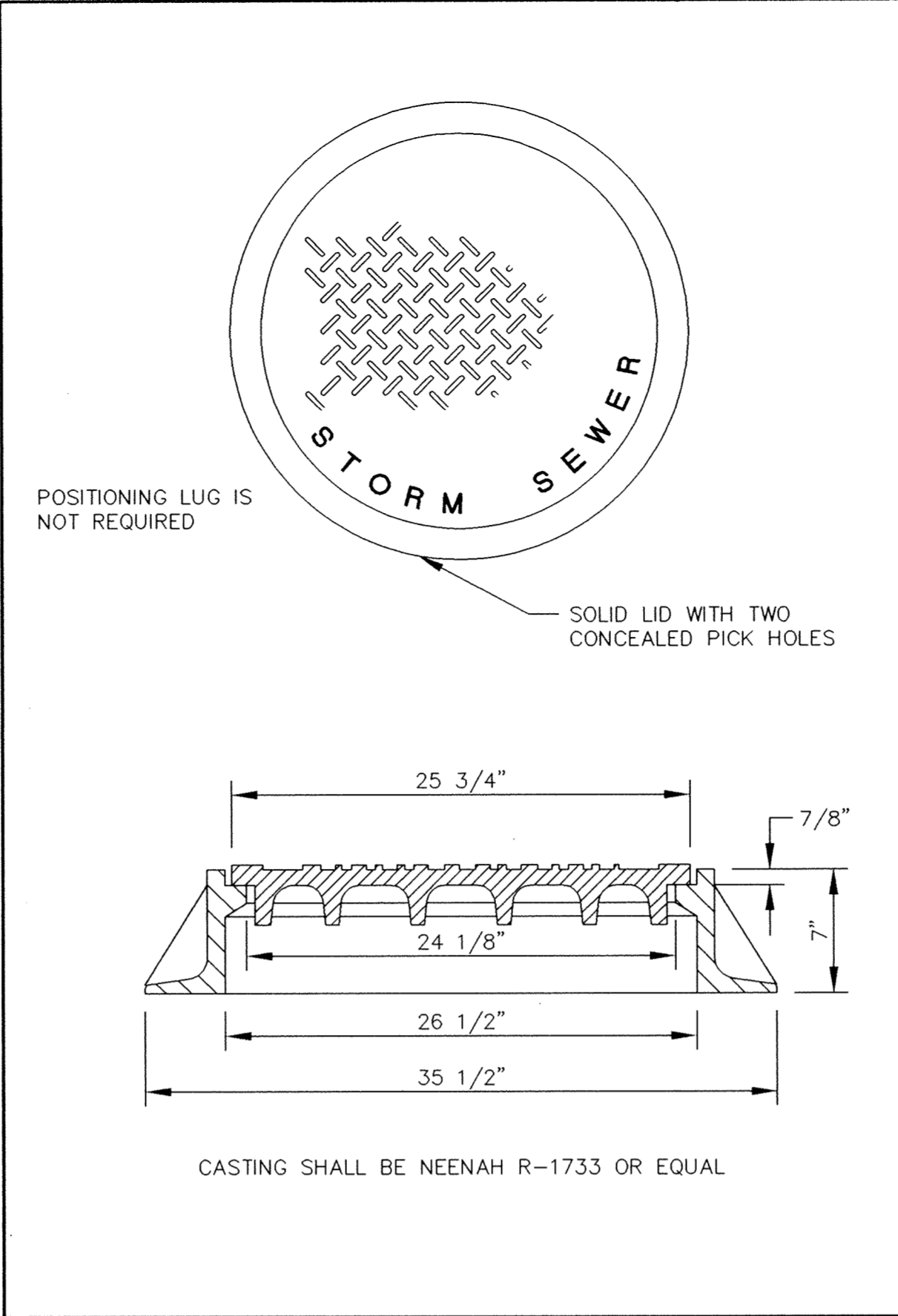


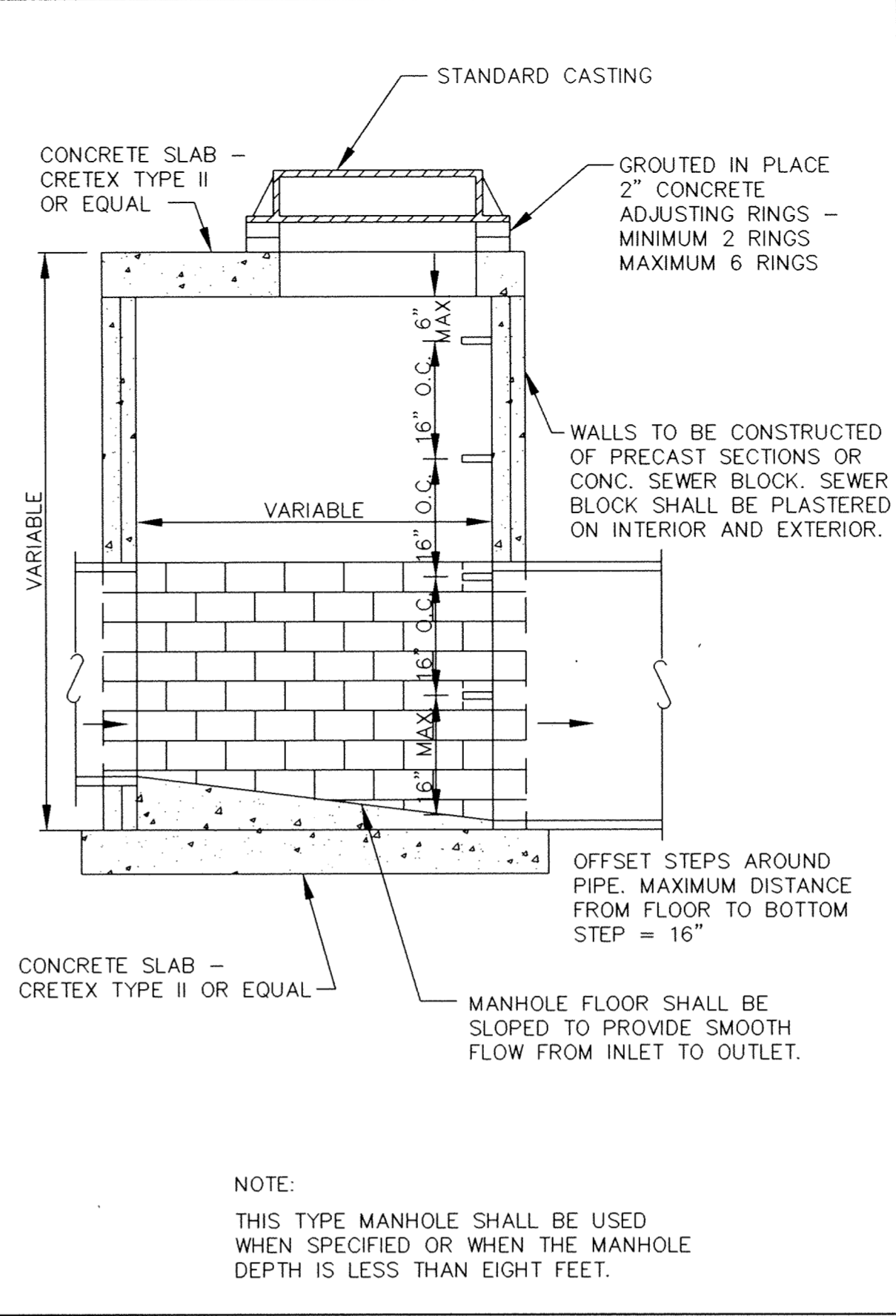
CATCH BASIN SEDIMENT BARRIER DURING CONSTRUCTION



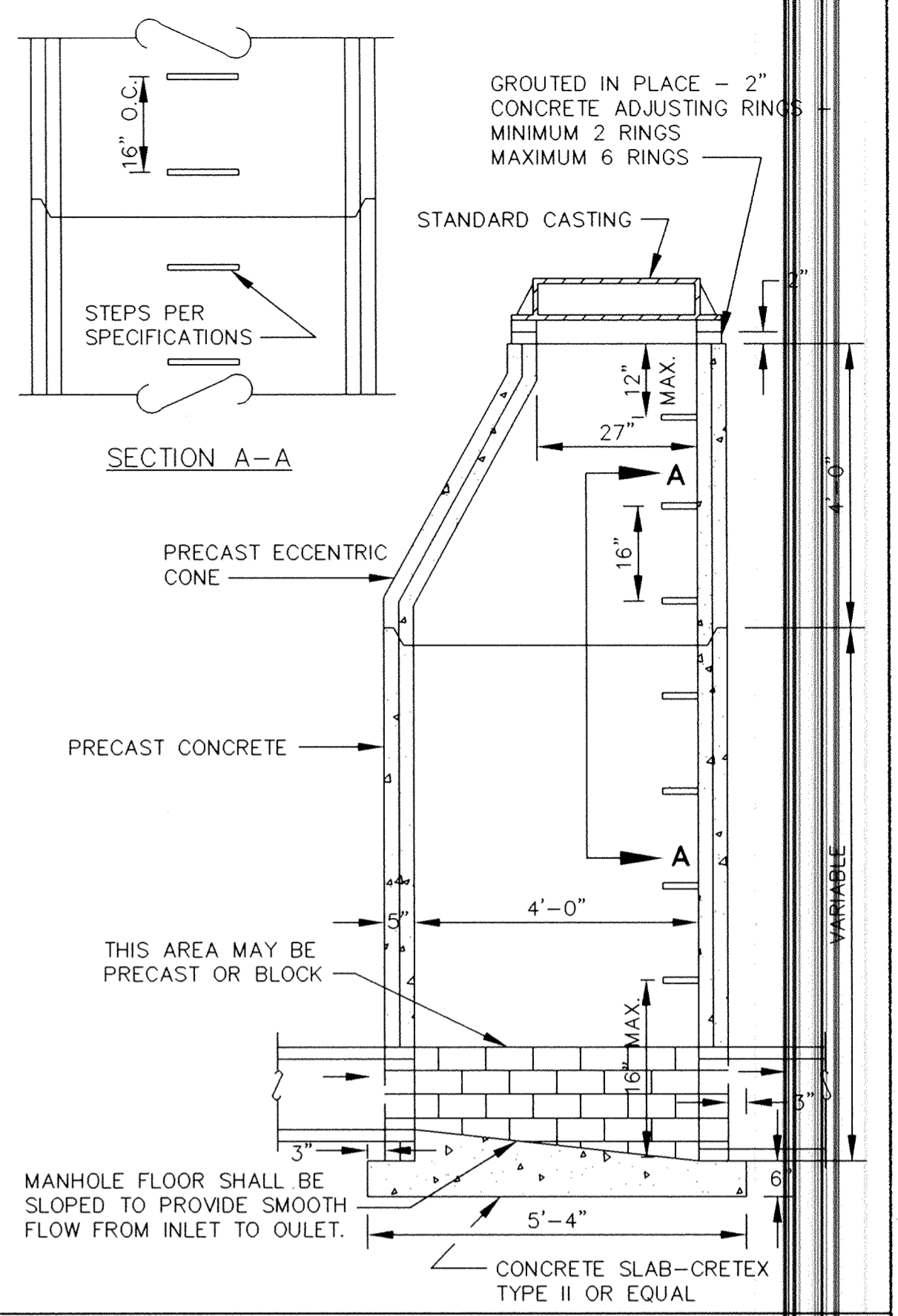
BEEHIVE CASTING



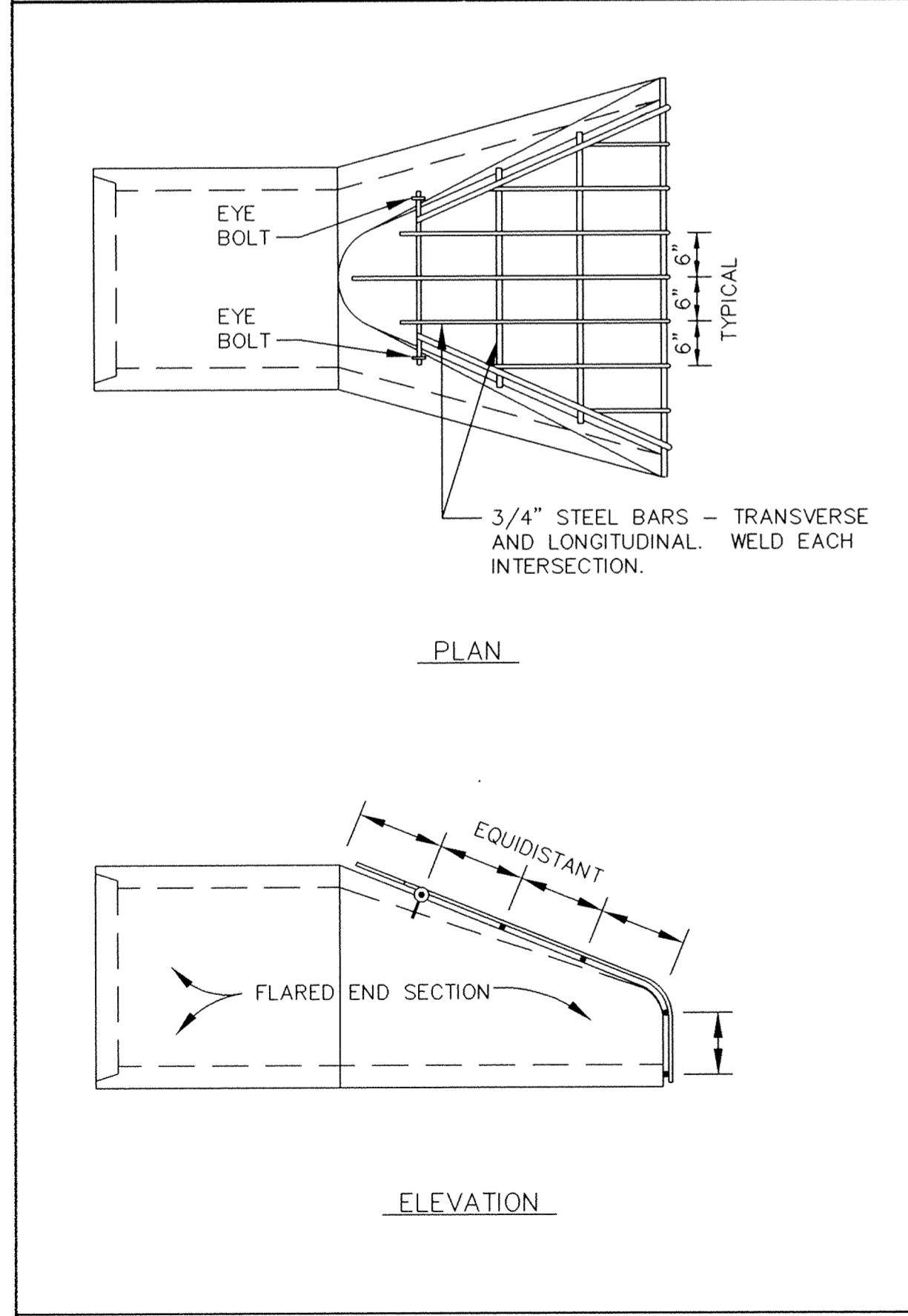
STANDARD MANHOLE CASTING



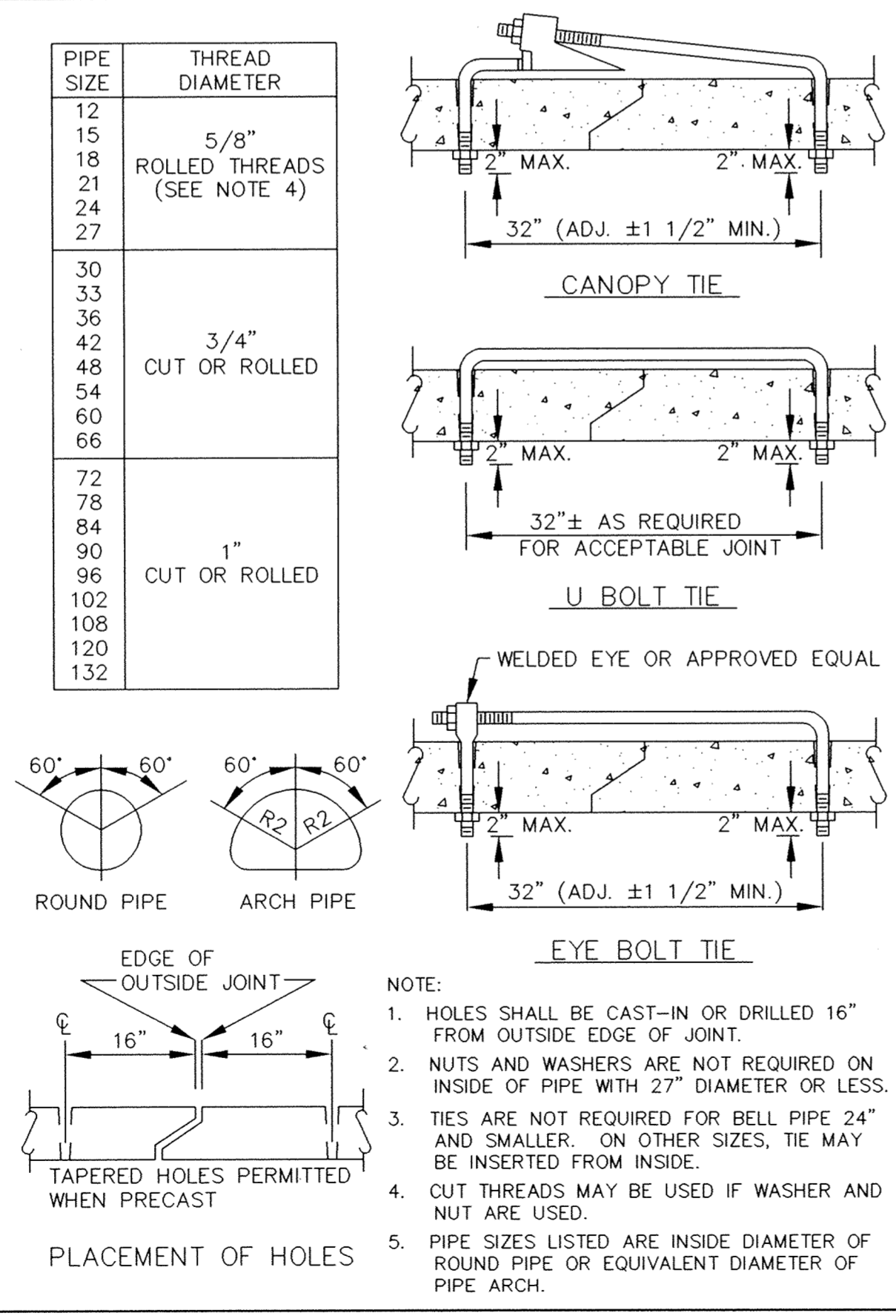
SLAB TOP MANHOLE



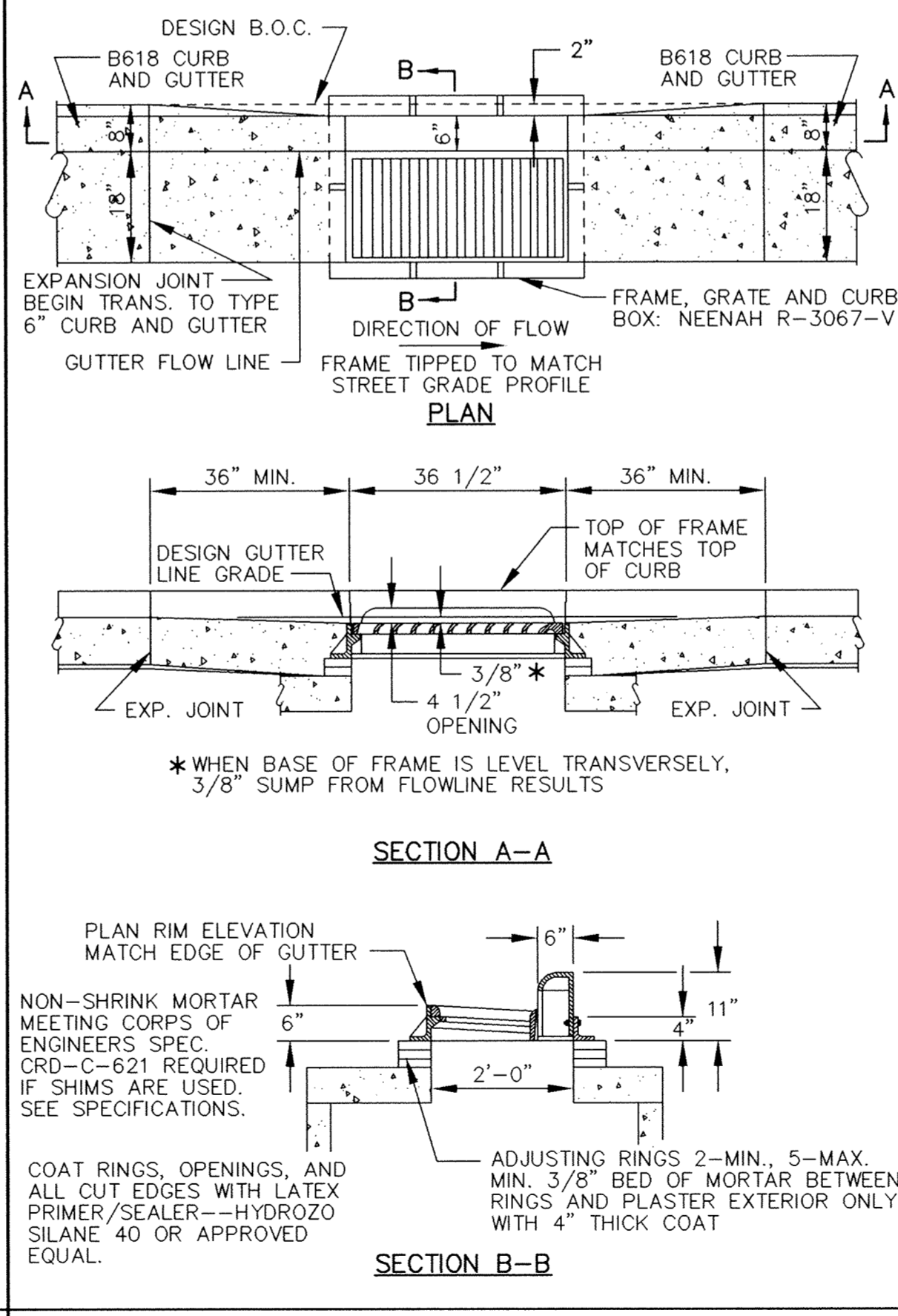
STANDARD MANHOLE



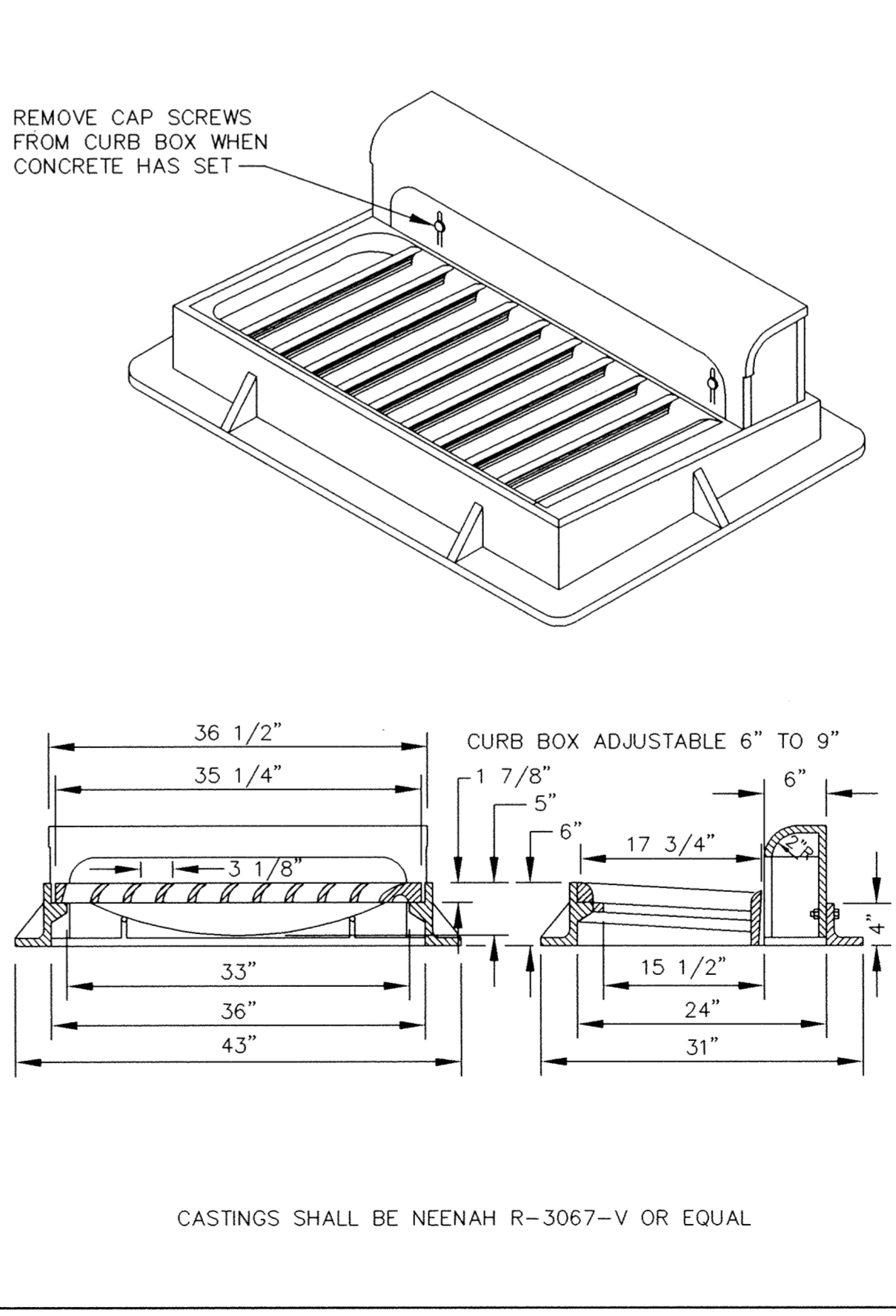
TRASH GUARD



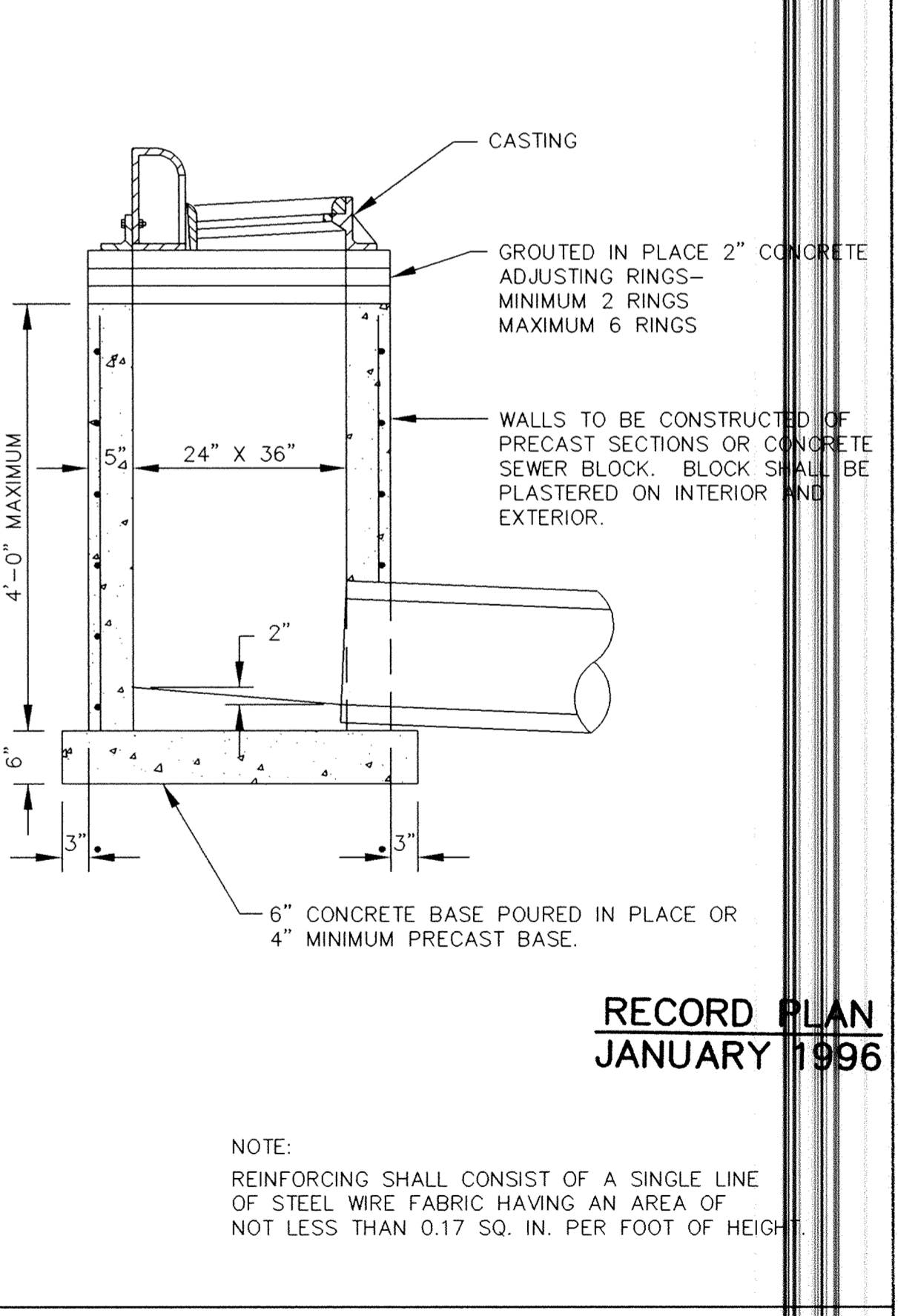
CONCRETE PIPE JOINT TIES



CATCH BASIN FRAME PLACEMENT B618 CURB AND GUTTER



STANDARD INLET CASTING



SHALLOW CATCH BASIN

ER246DSR

1. HOLES SHALL BE CAST-IN OR DRILLED 16" FROM OUTSIDE EDGE OF JOINT.
 2. NUTS AND WASHERS ARE NOT REQUIRED ON INSIDE OF PIPE WITH 27" DIAMETER OR LESS.
 3. TIES ARE NOT REQUIRED FOR BELL PIPE 24" AND SMALLER. ON OTHER SIZES, TIE MAY BE INSERTED FROM INSIDE.
 4. CUT THREADS MAY BE USED IF WASHER AND NUT ARE USED.
 5. PIPE SIZES LISTED ARE INSIDE DIAMETER OF ROUND PIPE OR EQUIVALENT DIAMETER OF PIPE ARCH.

NON-SHRINK MORTAR MEETING CORPS OF ENGINEERS SPEC. CRD-C-621 REQUIRED IF SHIMS ARE USED. SEE SPECIFICATIONS.
 COAT RINGS, OPENINGS, AND ALL CUT EDGES WITH LATEX PRIMER/SEALER--HYDROZO SILANE 40 OR APPROVED EQUAL.
 ADJUSTING RINGS 2--MIN., 5--MAX. MIN. 3/8" BED OF MORTAR BETWEEN RINGS AND PLASTER EXTERIOR ONLY WITH 4" THICK COAT

DATE	DESCRIPTION	DESIGNED	CHECKED	DRAWN

GRAPHIC SCALE
 0 HORIZ. N/A
 0 VERT. 5

CITY OF ELK RIVER
 ELK HILLS DRIVE/DODGE STREET IMPROVEMENTS
 STORM SEWER DETAILS
 DATE JULY 1995 SHEET 21 OF 22 SHEETS PROJECT NO. 230-246

I HEREBY CERTIFY THAT THIS PLAN, SPECIFICATION, OR REPORT WAS PREPARED BY ME OR UNDER MY DIRECT SUPERVISION AND THAT I AM A DULY REGISTERED PROFESSIONAL ENGINEER UNDER THE LAWS OF THE STATE OF MINNESOTA.
 Cynthia J. Blomquist
 DATE 7/31/95 REG. NO. 24062

1326 ENERGY PARK DRIVE
 ST. PAUL, MINNESOTA 55108
 (612) 644-4389
 5075 WAYZATA BLVD. SUITE #225
 MINNEAPOLIS, MINNESOTA 55416
 (612) 546-0432

CASTINGS SHALL BE NEENAH R-3067-V OR EQUAL

RECORD PLAN
 JANUARY 1996

Mon Jul 31 10:19:06 1995

SAFCO PRODUCTS • NEW HOPE, MINNESOTA
 REPRODUCED BY PART NUMBER 8558
 SAFCO PRODUCTS • NEW HOPE, MINNESOTA
 REPRODUCED BY PART NUMBER 8558
 SAFCO PRODUCTS • NEW HOPE, MINNESOTA
 REPRODUCED BY PART NUMBER 8558