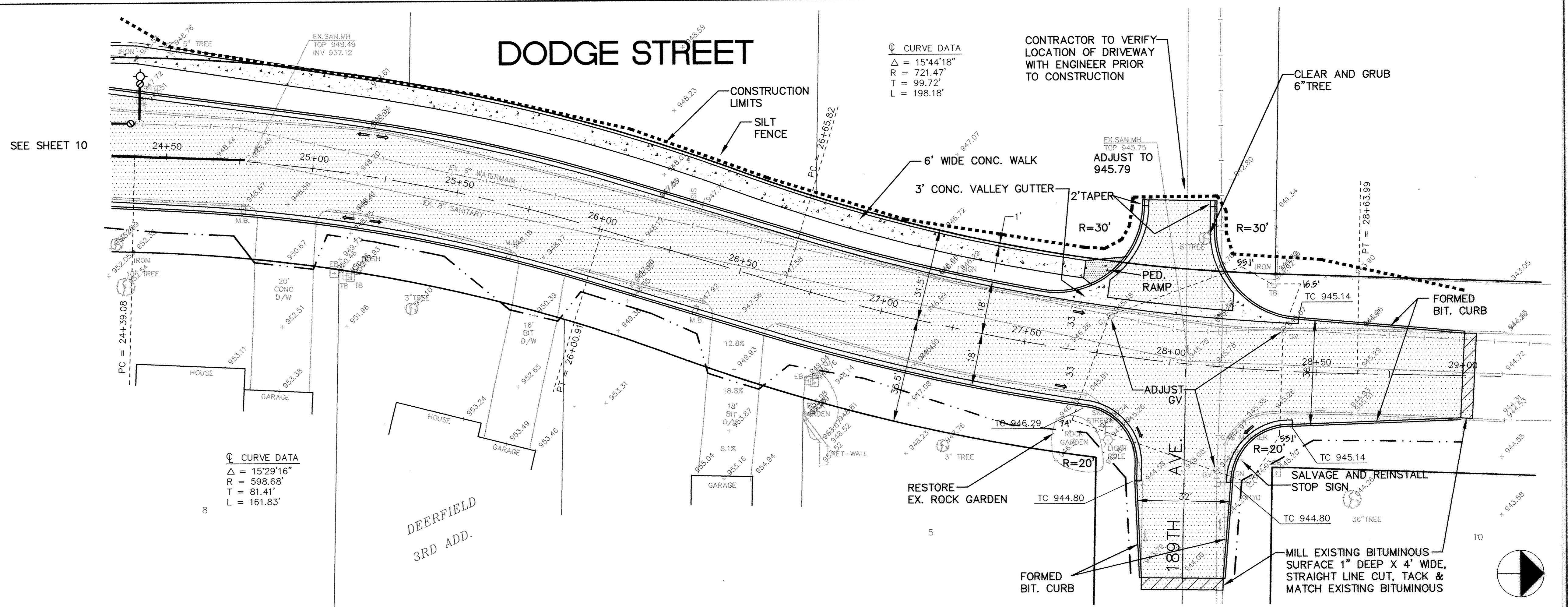


DODGE STREET



Ⓢ CURVE DATA
 $\Delta = 15'29'16''$
 $R = 598.68'$
 $T = 81.41'$
 $L = 161.83'$

Ⓢ CURVE DATA
 $\Delta = 15'44'18''$
 $R = 721.47'$
 $T = 99.72'$
 $L = 198.18'$

CONTRACTOR TO VERIFY
 LOCATION OF DRIVEWAY
 WITH ENGINEER PRIOR
 TO CONSTRUCTION

CLEAR AND GRUB
 6" TREE

EX SAN. MH
 TOP 945.75
 INV 945.79

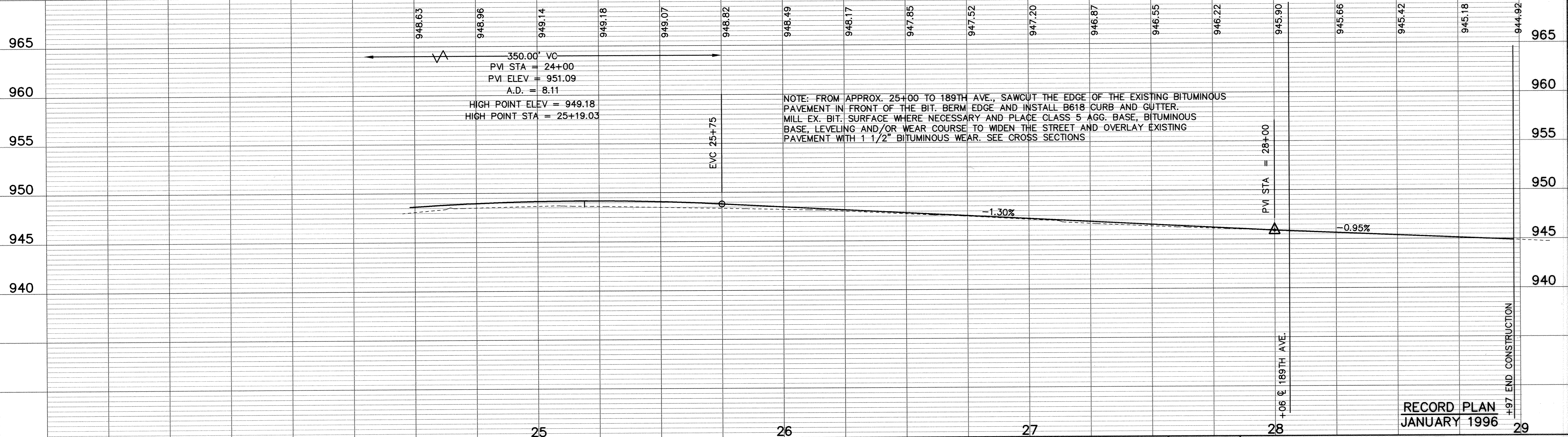
FORMED
 BIT. CURB

DEERFIELD
 3RD ADD.

FORMED
 BIT. CURB

SALVAGE AND REINSTALL
 STOP SIGN

MILL EXISTING BITUMINOUS
 SURFACE 1" DEEP X 4' WIDE,
 STRAIGHT LINE CUT, TACK &
 MATCH EXISTING BITUMINOUS



NOTE: FROM APPROX. 25+00 TO 189TH AVE., SAWCUT THE EDGE OF THE EXISTING BITUMINOUS PAVEMENT IN FRONT OF THE BIT. BERM EDGE AND INSTALL B618 CURB AND GUTTER. MILL EX. BIT. SURFACE WHERE NECESSARY AND PLACE CLASS 5 AGG. BASE, BITUMINOUS BASE, LEVELING AND/OR WEAR COURSE TO WIDEN THE STREET AND OVERLAY EXISTING PAVEMENT WITH 1 1/2" BITUMINOUS WEAR. SEE CROSS SECTIONS

1326 ENERGY PARK DRIVE ST. PAUL, MINNESOTA 55108 (612) 644-4389 5075 WAYZATA BLVD. SUITE #225 MINNEAPOLIS, MINNESOTA 55416 (612) 546-0432	I HEREBY CERTIFY THAT THIS PLAN, SPECIFICATION, OR REPORT WAS PREPARED BY ME OR UNDER MY DIRECT SUPERVISION AND THAT I AM A DULY REGISTERED PROFESSIONAL ENGINEER UNDER THE LAWS OF THE STATE OF MINNESOTA. <i>Cynthia J. Blanski</i> DATE 7/31/95 REG. NO. 24082	MSA CONSULTING ENGINEERS	DESIGNED CHECKED DRAWN GRAPHIC SCALE 0 10 20 0 5 10 L VERT. J	CITY OF ELK RIVER ELK HILLS DRIVE/DODGE STREET IMPROVEMENTS DODGE STREET PLAN AND PROFILE 25+75 TO 29+97 DATE JULY 1995 SHEET 11 OF 22 SHEETS PROJECT NO. 230-246
	REVISIONS DATE DESCRIPTION	RECORD PLAN JANUARY 1996	ER246D-6	