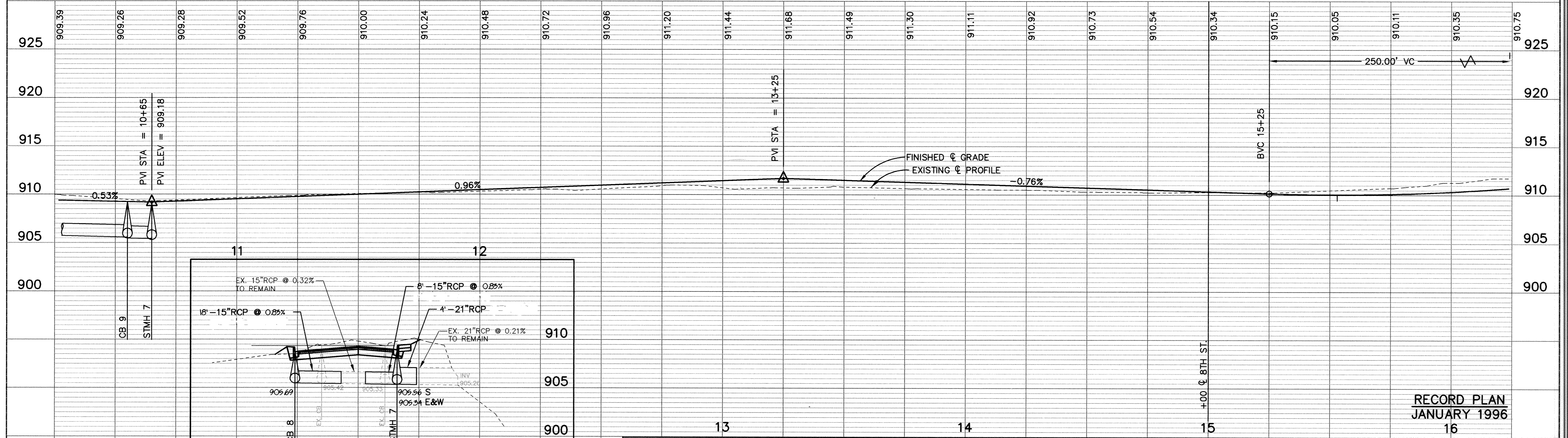
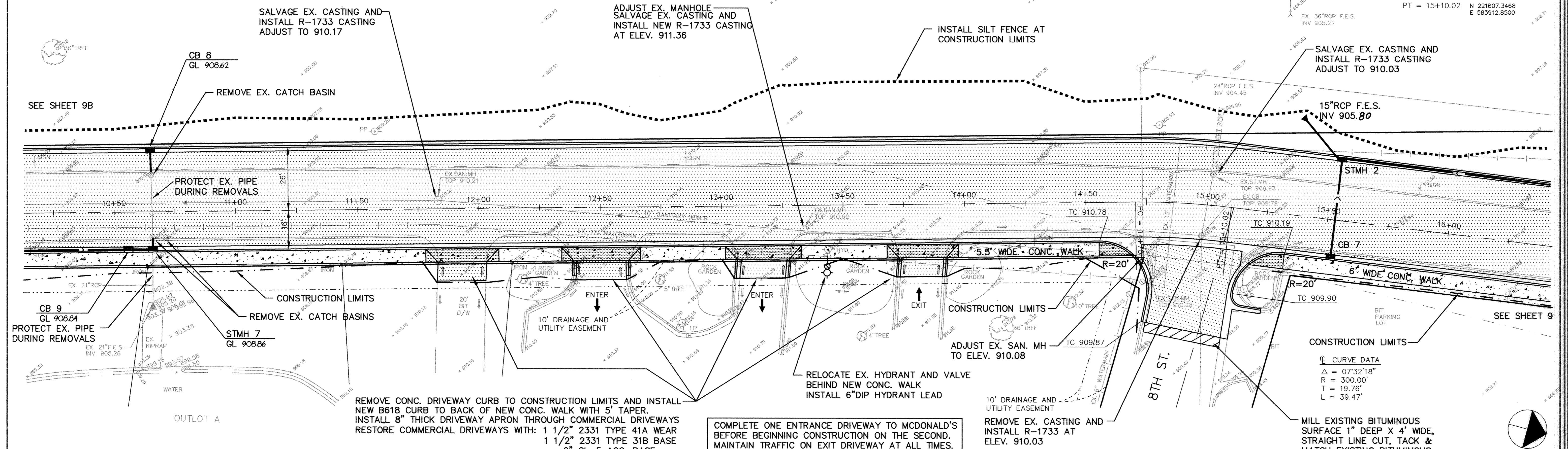


DODGE AVENUE

11+00 N 221215.1242
E 584031.9603
PC = 14+70.54 N 221568.9924
E 583922.0480
PT = 15+10.02 N 221807.3468
E 583912.8500



<p>13 14 15</p>		<p>16</p>	
<p>ER246D-3</p>		<p>RECORD PLAN JANUARY 1996</p>	
<p>1366 ENERGY PARK DRIVE ST. PAUL, MINNESOTA 55108 (612) 644-4389</p>		<p>CITY OF ELK RIVER ELK HILLS DRIVE STORM SEWER AND STREETS DODGE AVENUE</p>	
<p>5075 WAYZATA BLVD. SUITE #225 MINNEAPOLIS, MINNESOTA 55416 (612) 546-0432</p>		<p>CHANGE ORDER NO. 1 DATE SEPT 1995</p>	
<p>DATE 7/31/95 REG. NO. 24082</p>		<p>SHEET 9A OF 22 SHEETS PROJECT NO. 230-246</p>	

DRAWING NUMBER
 ELKH 95
 SAECO PRODUCTS • NEW HOPE, MINNESOTA
 REPRODUCED BY PART NUMBER 8082