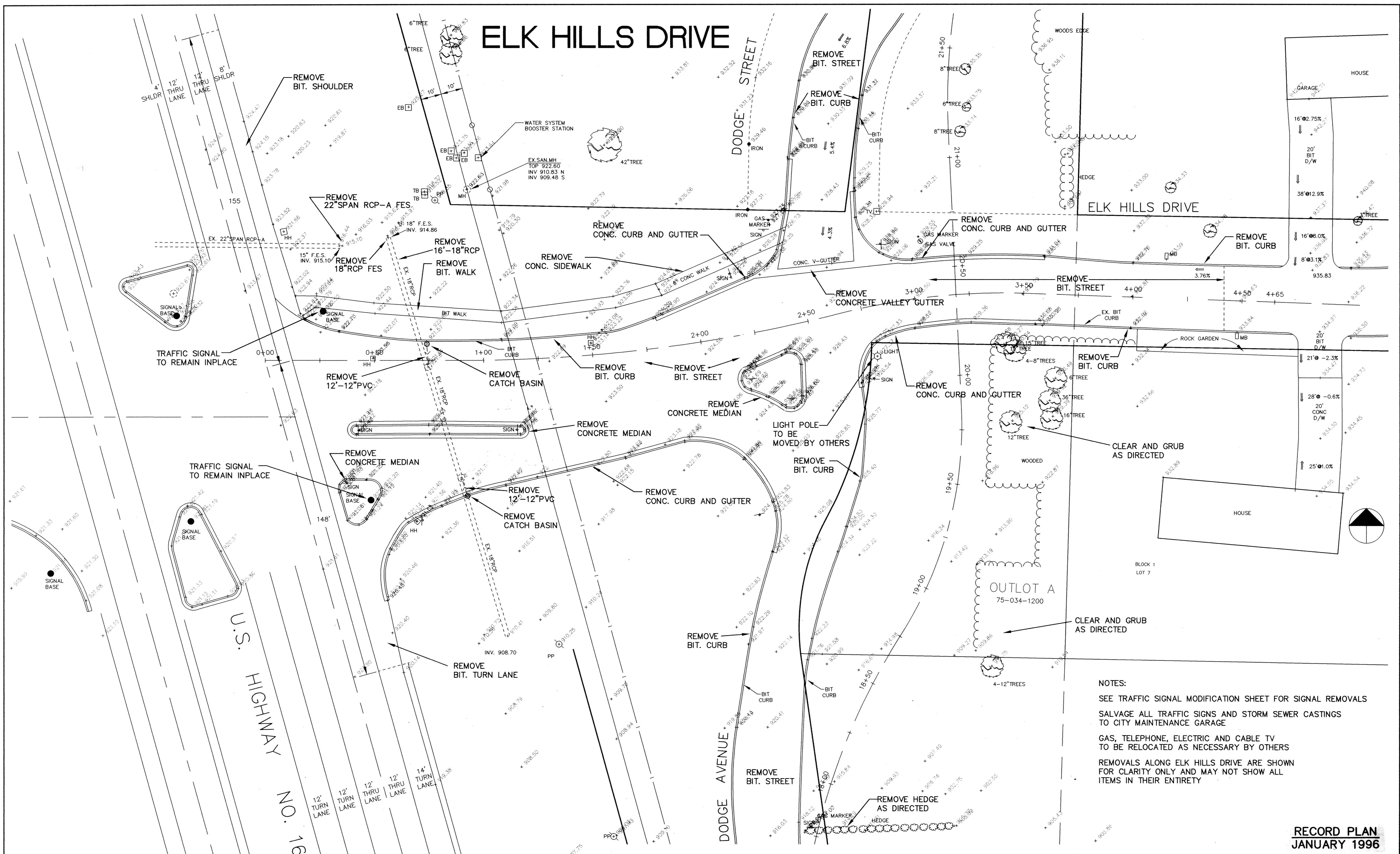


ELK HILLS DRIVE



NOTES:
 SEE TRAFFIC SIGNAL MODIFICATION SHEET FOR SIGNAL REMOVALS
 SALVAGE ALL TRAFFIC SIGNS AND STORM SEWER CASTINGS TO CITY MAINTENANCE GARAGE
 GAS, TELEPHONE, ELECTRIC AND CABLE TV TO BE RELOCATED AS NECESSARY BY OTHERS
 REMOVALS ALONG ELK HILLS DRIVE ARE SHOWN FOR CLARITY ONLY AND MAY NOT SHOW ALL ITEMS IN THEIR ENTIRETY

**RECORD PLAN
 JANUARY 1996**

I HEREBY CERTIFY THAT THIS PLAN, SPECIFICATION, OR REPORT WAS PREPARED BY ME OR UNDER MY DIRECT SUPERVISION AND THAT I AM A DULY REGISTERED PROFESSIONAL ENGINEER UNDER THE LAWS OF THE STATE OF MINNESOTA.
Cynthia J. Blomah
 DATE 7/13/95 REG. NO. 24082



1326 ENERGY PARK DRIVE
 ST. PAUL, MINNESOTA 55108
 (612) 644-4389
 5075 WAYZATA BLVD. SUITE #225
 MINNEAPOLIS, MINNESOTA 55416
 (612) 546-0432

DATE	DESCRIPTION	DESIGNED
		CHEKED <i>AD</i>
		DRAWN
		GRAPHIC SCALE
		0 20
		VERT. 5

CITY OF ELK RIVER
 ELK HILLS DRIVE/DODGE STREET IMPROVEMENTS
 ELK HILLS DRIVE
 ELK HILLS DRIVE REMOVAL PLAN

DATE JULY 1995 SHEET 6 OF 22 SHEETS PROJECT NO. 230-246