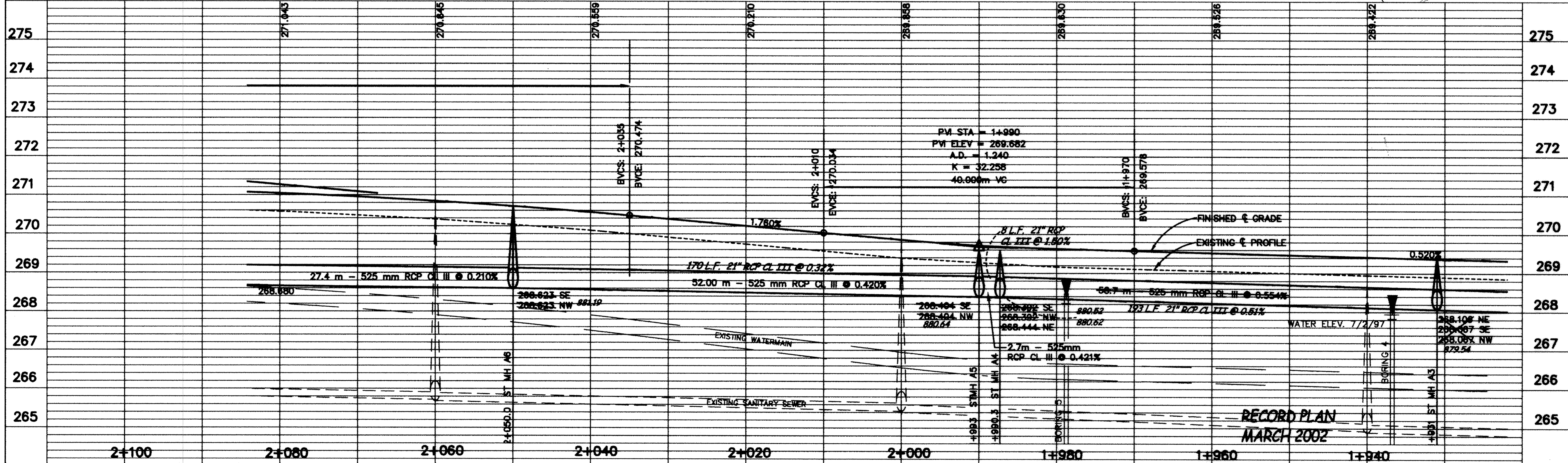


TYLER STREET

SEE SHEET C1-15

SEE SHEET C1-13



DESIGNED BY: --- DRAWN BY: *[Signature]*
 APPROVED: --- JOB NUMBER: 800110J
 CAD DATE: April 17, 2002 1:29:54 p.m.
 CAD FILE: 800110T\Asbuilts\S_SEGMENT\13.DWG

I HEREBY CERTIFY THAT THIS PLAN, SPECIFICATION, OR REPORT WAS PREPARED BY ME OR UNDER MY DIRECT SUPERVISION AND THAT I AM A DULY REGISTERED PROFESSIONAL ENGINEER UNDER THE LAWS OF THE STATE OF MINNESOTA.
 DATE: _____ REG. NO. _____

NO.	DATE	BY	REVISION DESCRIPTION
1.	11-8-99	RM	REVISE STORM SEWER

1326 ENERGY PARK DRIVE
 ST. PAUL, MINNESOTA 55108
 (612) 644-4388

Howard R. Green Company
 CONSULTING ENGINEERS

CITY OF ELK RIVER
 EASTERN AREA
 TYLER STREET IMPROVEMENTS

PLAN + PROFILE S. OF C.S.A.H. 12
 SP 71-613-08, SP 204-020-03, SP 204-133-01, SP 204-132-03
 1+931 TO 2+080

SHEET NO.
C1-14

DRAWING NUMBER
 DRAWING NUMBER
 DRAWING NUMBER
 DRAWING NUMBER
 DRAWING NUMBER
 EAST E. 01
 DRAWING NUMBER