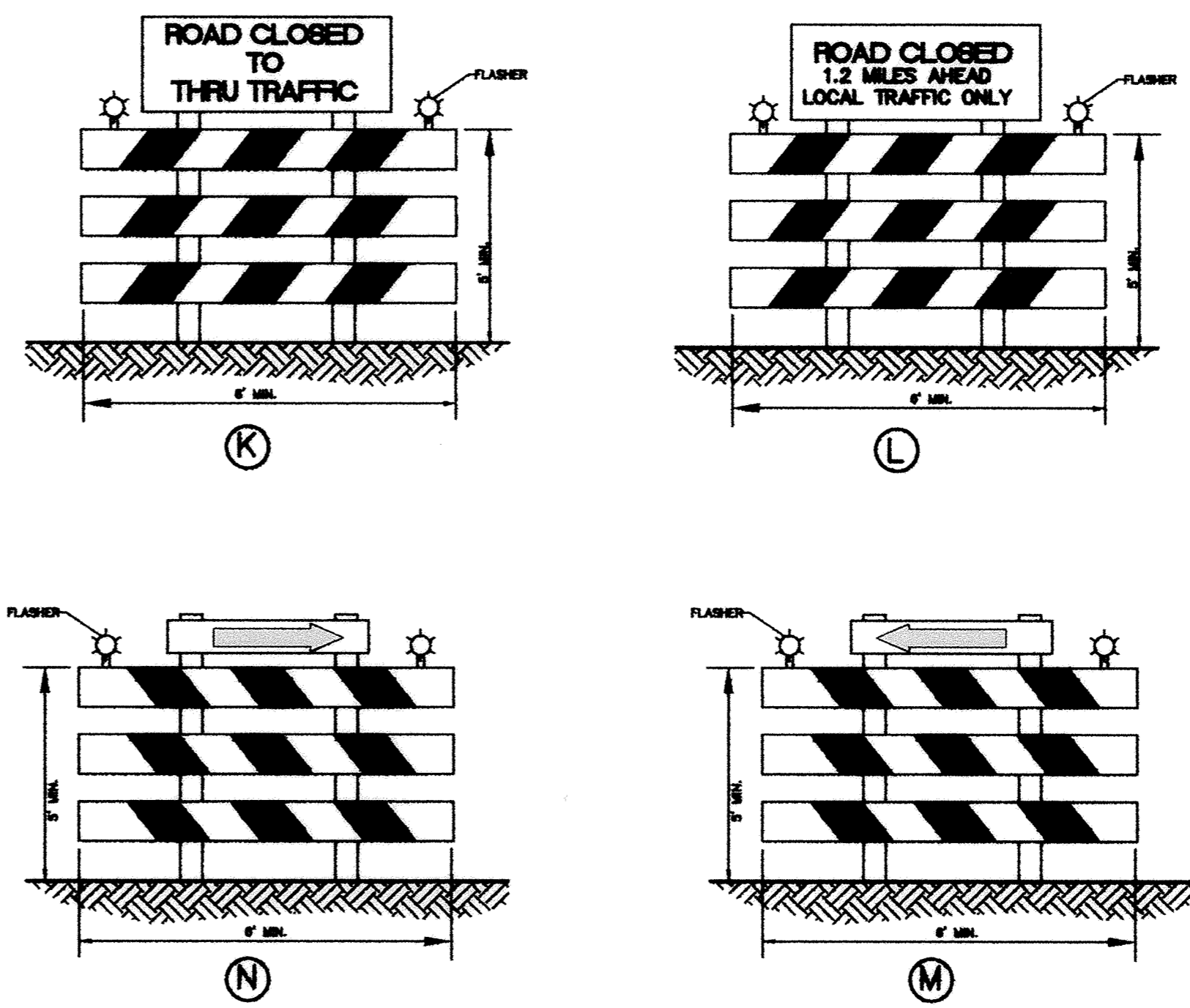
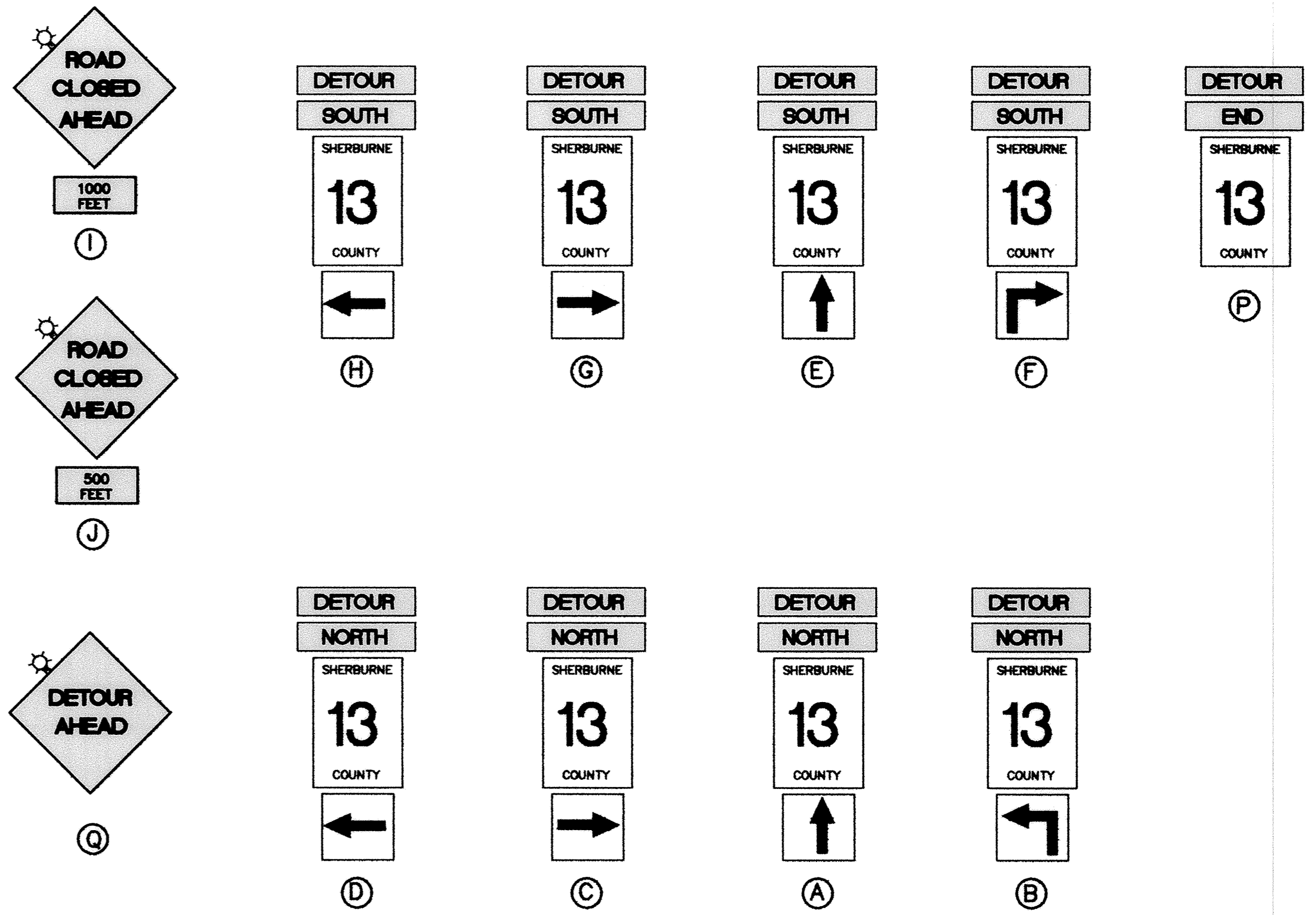


DETOUR PLAN



CONSTRUCTION SIGN TABULATION		
TYPE	DESCRIPTION	QTY.
A	COUNTY ROUTE MARKER (M1-X4) WITH DETOUR SIGN (M4-8), UP DIRECTIONAL ARROW (M6-3) AND NORTH DIRECTIONAL (M3-1)	3
B	COUNTY ROUTE MARKER (M1-X4) WITH DETOUR SIGN (M4-8), LEFT DIRECTIONAL ARROW (M5-1) AND NORTH DIRECTIONAL (M3-1)	0
C	COUNTY ROAD MARKER (M1-X4) WITH DETOUR SIGN (M4-8), LEFT DIRECTIONAL ARROW (M6-1) AND NORTH DIRECTIONAL (M3-1)	0
D	COUNTY ROAD MARKER (M1-X4) WITH DETOUR SIGN (M4-8), RIGHT DIRECTIONAL ARROW (M6-1) AND NORTH DIRECTIONAL (M3-1)	2
E	COUNTY ROUTE MARKER (M1-X4) WITH DETOUR SIGN (M4-8) UP DIRECTIONAL ARROW (M6-3) AND SOUTH DIRECTIONAL ARROW (M3-3)	1
F	COUNTY ROUTE MARKER (M1-X4) WITH DETOUR SIGN (M4-8), RIGHT ADVANCE TURN ARROW (M5-1) AND SOUTH DIRECTIONAL ARROW (M3-3)	0
G	COUNTY ROAD MARKER (M1-X4) WITH DETOUR SIGN (M4-8), RIGHT DIRECTIONAL ARROW (M6-1) AND SOUTH DIRECTIONAL ARROW (M3-3)	2
H	COUNTY ROAD MARKER (M1-X4) WITH DETOUR SIGN (M4-8), LEFT DIRECTIONAL ARROW (M6-1) AND SOUTH DIRECTIONAL ARROW (M3-3)	1

CONSTRUCTION SIGN TABULATION		
TYPE	DESCRIPTION	QTY.
I	ADVANCE ROAD CLOSED SIGN (W20-3) WITH DISTANCE PLAQUE (1000 FEET)	2
J	ADVANCE ROAD CLOSED SIGN (W20-3) WITH DISTANCE PLAQUE ( 500 FEET)	2
K	TYPE III BARRICADE WITH FLASHERS WITH ROAD CLOSED TO THRU TRAFFIC SIGN (R11-4)	5
L	TYPE III BARRICADE WITH FLASHERS WITH LOCAL TRAFFIC ONLY SIGN (R11-3) AND DETOUR SIGN (M4-10L). DISTANCE SHALL 1.2 MILES.	1
M	TYPE III BARRICADE WITH FLASHERS WITH DETOUR SIGN (M4-10L)	1
N	TYPE III BARRICADE WITH FLASHERS WITH DETOUR SIGN (M4-10R)	0
P	COUNTY ROUTE MARKER (M1-X4) WITH DETOUR SIGN (M4-8) AND END SIGN (M4-6)	2
Q	DETOUR AHEAD SIGN (W20-2)	2

- NOTES:
- ALL TRAFFIC CONTROL SIGNING AND DEVICES SHALL CONFORM TO THE "1995 MUTCD", INCLUDING THE FIELD MANUAL FOR TEMPORARY TRAFFIC CONTROL ZONE LAYOUTS DATED APRIL, 1995.
  - ALL TRAFFIC CONTROL DEVICES SHALL HAVE RETRO-REFLECTIVE SHEETING.
  - ALL ADDITIONAL CONSTRUCTION SIGNING SHALL BE PROVIDED BY THE CONTRACTOR AS INCIDENTAL TO THE TOTAL COST OF THE PROJECT.
  - CONSTRUCTION SIGNS AND BARRICADES THAT ARE PERIODICALLY REQUIRED TO BE MOVED DUE TO CONSTRUCTION OPERATIONS, SHALL BE PLACED AT LOCATIONS WHERE THEY GIVE SUFFICIENT WARNING TO MOTORISTS AND PEDESTRIANS OF THE CONDITIONS AHEAD AND SHALL BE RELOCATED AS NEEDED TO KEEP SIGNING CURRENT AT REQUIRED LOCATIONS.
  - THE CONTRACTOR SHALL PROTECT AND RESTRICT ALL PEDESTRIANS FROM THE WORK AREAS.
  - OPEN EXCAVATIONS SHALL BE COVERED AND BARRICADED.
  - THE EXACT LOCATION OF ALL TRAFFIC CONTROL DEVICES SHALL BE DETERMINED AT THE SITE.
  - ALL SIGNS MOUNTED ON FIXED SUPPORTS WHICH ARE WIDER THAN 36 INCHES OR LARGER THAN 10 SQUARE FEET IN AREA SHALL BE MOUNTED ON TWO POSTS.

DESIGNED BY: JA JOB DATE: JULY 1999  
 DRAWN BY: RKM JOB NUMBER: 800110J  
 CAD DATE: July 21, 1999 10:35:32 a.m.  
 CAD FILE: 800110T\MISC\DETOUR-CSAH13.DWG

I HEREBY CERTIFY THAT THIS PLAN, SPECIFICATION, OR REPORT WAS PREPARED BY ME OR UNDER MY DIRECT SUPERVISION AND THAT I AM A DULY REGISTERED PROFESSIONAL ENGINEER UNDER THE LAWS OF THE STATE OF MINNESOTA.  
 DATE 10/15/98 REG. NO. 15316

NO.	DATE	BY	REVISION DESCRIPTION

**Howard R. Green Company**  
 CONSULTING ENGINEERS

1326 ENERGY PARK DRIVE  
 ST. PAUL, MINNESOTA 55108  
 (612) 644-4389

**CITY OF ELK RIVER**  
 EASTERN AREA  
 TYLER STREET IMPROVEMENTS

**DETOUR PLAN**  
 COUNTY ROAD 13  
 SP 71-613-08, SP 204-020-03, SP 204-133-01, SP 204-132-03

SHEET NO.  
**G-13**

SARGO PRODUCTS • NEW HIRE, MINNESOTA  
 REORDER BY PART NUMBER 8582  
 14