

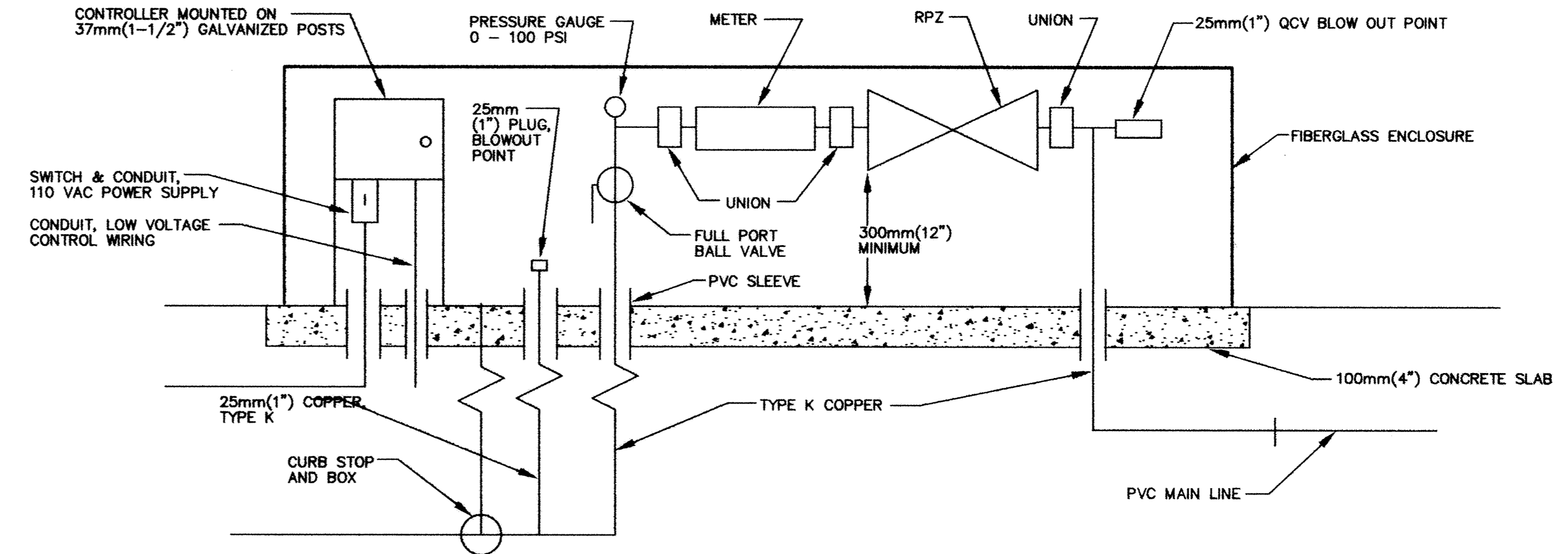
MEDIAN LOCATION (1) (STATIONING)	LENGTH (2) m (ft)	AREA (2) ha (ac)	LOCATION OF 25 mm SERVICE RISER (2)
SOUTH OF CSAH12			
0+075 - 0+373	298 (978')	0.131 (0.32 ac)	0+223
0+906 - 1+446	540 (1772')	0.251 (0.62 ac)	1+178
1+590 - 1+895	305 (1001')	0.143 (0.35 ac)	1+742
1+954 - 2+372	418 (1371')	0.204 (0.51 ac)	2+163
NORTH OF CSAH 12			
0+017 - 0+115	98 (322')	0.410 (0.10 ac)	0+090
0+240 - 0+905	665 (2182')	0.322 (0.80 ac)	0+895
TOTAL	2374 (7789')	1.791 (4.43 ac)	

WIDTH OF SOD IN MEDIAN VARIES 1.4 m - 5.0 m (4.6' - 16.4').

- (1) AREAS OF SOD PLACEMENT ONLY.
- (2) APPROXIMATE DIMENSIONS AND LOCATIONS OF PLANNED PLACEMENT

LEGEND

- 15H
- 12H
- 10H
- 8H
- 15 SS/ES
- WATER SOURCE
- PVC BALL VALVE (SIZE PER PIPE)
- 37 mm (1-1/2") VALVE
- 25 mm (1") VALVE
- 50 mm (2") PVC (CL160) MAIN LINE (UNLESS OTHERWISE INDICATED)
- 25 mm (1") POLYETHYLENE (UNLESS OTHERWISE INDICATED)



THE SPRINKLER SYSTEM SHALL BE COMPENSATED FOR UNDER PAY ITEM *2504.601 SPRINKLER SYSTEM* AS A LUMP SUM QUANTITY. THIS INCLUDES CONNECTION TO CURB STOP AND COPPER RISER PIPE INSTALLED AS SEPARATE PAY ITEMS.

BACKFLOW PREVENTION DEVICES ARE REQUIRED.

THE SYSTEM SHALL NOT MAKE USE OF RISERS FOR THE SPRINKLER HEADS.

SCREW CLAMPS ARE REQUIRED. THE USE OF OETIKER CLAMPS WILL NOT BE ALLOWED.

SPRINKLER HEAD PLACEMENT SHALL ALLOW FOR SOD IN THE MEDIANS.

DESIGNED BY: --- DRAWN BY: RKM
 APPROVED: --- JOB NUMBER 800110J
 CAD DATE: January 06, 2003 10:10:55 a.m.
 CAD FILE: 800110T_800110J\DWGS\TYLER_SPRINKLER.M1.DWG

I HEREBY CERTIFY THAT THIS PLAN, SPECIFICATION, OR REPORT WAS PREPARED BY ME OR UNDER MY DIRECT SUPERVISION AND THAT I AM A DULY REGISTERED PROFESSIONAL ENGINEER UNDER THE LAWS OF THE STATE OF MINNESOTA.
 DATE (JLALLEN) REG. NO. _____

NO.	DATE	BY	REVISION DESCRIPTION

Howard R. Green Company
 CONSULTING ENGINEERS
 1326 ENERGY PARK DRIVE
 ST. PAUL, MINNESOTA 55108
 (651) 644-4389

CITY OF ELK RIVER
EASTERN AREA
TYLER STREET IMPROVEMENTS

SPRINKLER DETAILS
 SF 71-613-08, SF 204-020-03, SF 204-133-01, SF 204-132-03

SHEET NO.
M1

DRAWING NUMBER EAST 01 109