

**MINNESOTA DEPARTMENT OF TRANSPORTATION
CITY OF ELK RIVER
SECTION 2 AND 11, T32N R26W
SECTION 26 AND 35, T33N R26W
CONSTRUCTION PLAN FOR GRADING, AGGREGATE BASE, BITUMINOUS,
CONCRETE CURB AND GUTTER, STORM SEWER, AND STREET LIGHTING
171ST AVENUE, TYLER STREET AND C.S.A.H. NO. 13 IMPROVEMENTS**

Pursuant to the requirements of M.S. 216D.04, the state one-call notification center was contacted on JANUARY, 1998 AND OCTOBER 1998 (Ticket No.9444 AND No.498897), and these plans include the type, size and general location of underground facilities as reported by the affected operators of those facilities as of the date of completion of these final drawings. This information may not be relied on as warranting the actual presence, characteristics, or location of the underground facilities, and does not relieve any person from complying with state notification and location requirements prior to excavation.

S.P. 71-613-08 (C.S.A.H. NO.13)

BETWEEN C.S.A.H. NO.12 AND TYLER STREET

GROSS LENGTH	894	METERS	0.894	KILOMETERS
BRIDGE LENGTH	0	METERS	0	KILOMETERS
EXCEPTION LENGTH	0	METERS	0	KILOMETERS
NET LENGTH	894	METERS	0.894	KILOMETERS

S.P. 204-020-03 (TYLER STREET N. OF C.S.A.H. 12)

BETWEEN C.S.A.H. NO.12 AND C.S.A.H. NO.13

GROSS LENGTH	1026	METERS	1.026	KILOMETERS
BRIDGE LENGTH	0	METERS	0	KILOMETERS
EXCEPTION LENGTH	0	METERS	0	KILOMETERS
NET LENGTH	1026	METERS	1.026	KILOMETERS

S.P. 204-133-01 (TYLER STREET S. OF C.S.A.H. 12)

BETWEEN C.S.A.H. NO.12 AND 171ST AVENUE

GROSS LENGTH	2660	METERS	2.660	KILOMETERS
BRIDGE LENGTH	0	METERS	0	KILOMETERS
EXCEPTION LENGTH	7	METERS	0.007	KILOMETERS
NET LENGTH	2653	METERS	2.653	KILOMETERS

S.P. 204-132-03 (171ST AVENUE - STREET LIGHTING)

BETWEEN TYLER STREET AND U.S. HIGHWAY NO.10

GROSS LENGTH	418	METERS	0.418	KILOMETERS
BRIDGE LENGTH	0	METERS	0	KILOMETERS
EXCEPTION LENGTH	0	METERS	0	KILOMETERS
NET LENGTH	418	METERS	0.418	KILOMETERS

SCALES:

PLAN	PROFILE	CROSS SECTIONS
0 HORIZ (M) 10	0 HORIZ (M) 10	0 HORIZ (M) 4
	0 VERT (M) 2	0 VERT (M) 2

INDEX OF SHEETS

1	TITLE SHEET WITH VICINITY MAP
G2	LOCATION MAP
G3 - G3A	ESTIMATED QUANTITIES
G4	TYPICAL SECTIONS
G5 - G9	TABULATIONS
G10	CALC. SHEET
G11 - G12	STREET & STORM DETAIL SHEETS
G13 - G14	DETOUR PLAN
C1-1 - C1-23	TYLER STREET PLAN AND PROFILE SHEETS
C1-24 - C1-25	CSAH 13 BITUMINOUS OVERLAY & CUL-DE-SAC
C2-1 - C2-5	STORM SEWER POND PLAN AND PROFILE SHEETS
C1-1X - C1-29X	CROSS SECTIONS
C1-33X - C1-49X	CROSS SECTIONS
SS1 - SS6	SIGNING & STRIPING
L1 - L8	LIGHTING PLANS
M1 - M10	IRRIGATION & EROSION CONTROL

TOTAL NUMBER OF PLAN SHEETS - 118

I HEREBY CERTIFY THAT PLAN, SPECIFICATION, OR REPORT WAS PREPARED BY ME OR UNDER MY DIRECT SUPERVISION AND THAT I AM DULY REGISTERED PROFESSIONAL ENGINEER UNDER THE LAWS OF THE STATE OF MINNESOTA.

DATE _____ REG. NO. _____

APPROVED _____ DATE _____
CITY OF ELK RIVER ENGINEER

APPROVED _____ DATE _____
SHERBURNE COUNTY ENGINEER

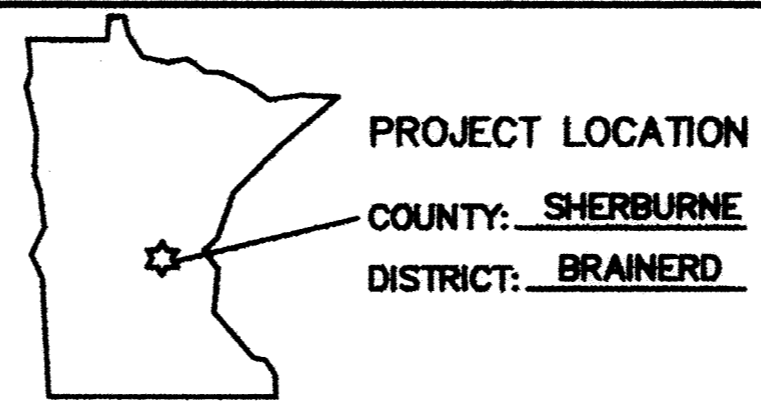
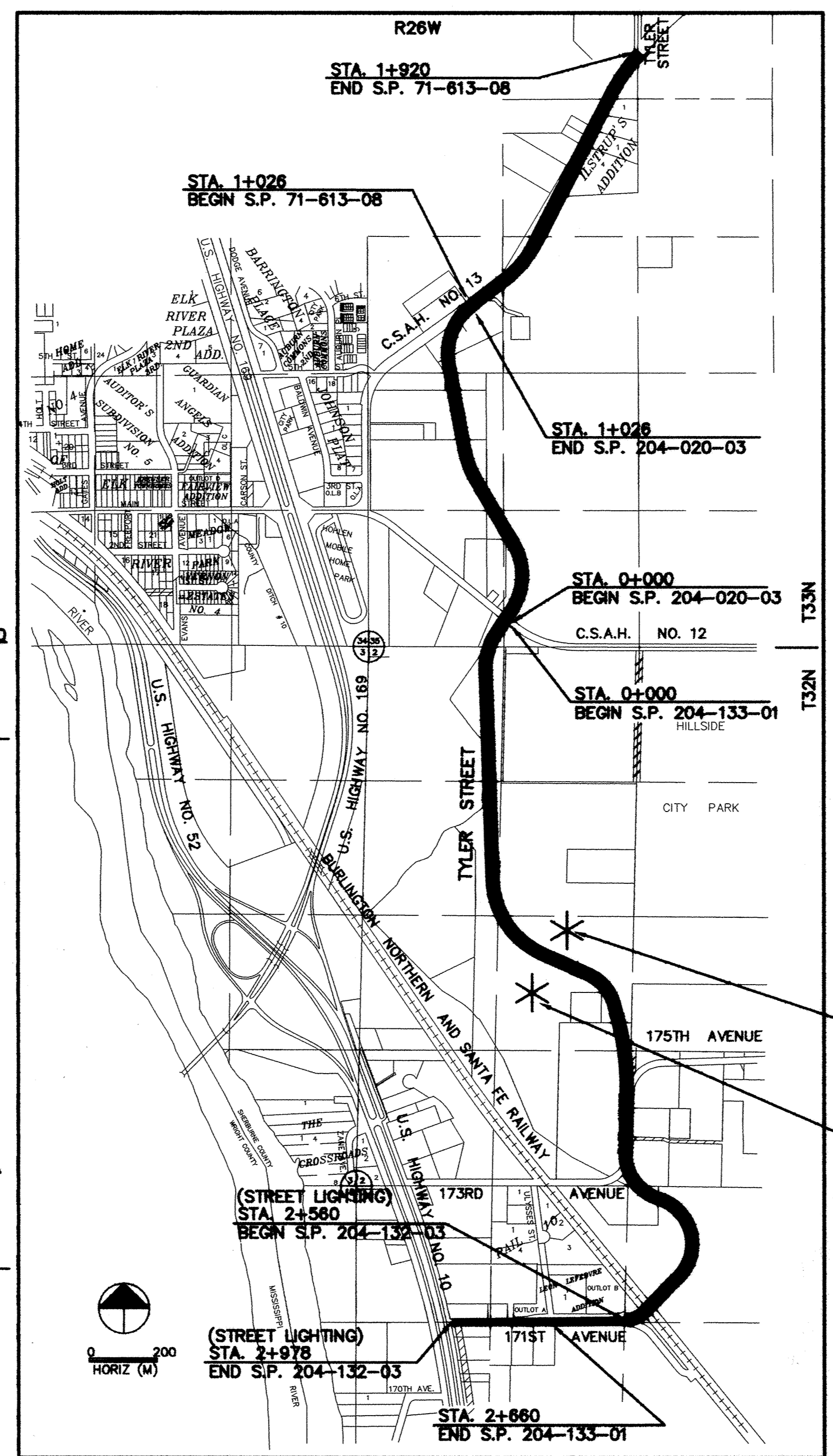
APPROVED _____ DATE _____
DISTRICT STATE AID ENGINEER: REVIEWED FOR COMPLIANCE WITH STATE AND FEDERAL AID RULES/POLICY

APPROVED FOR STATE AND FEDERAL AID FUNDING: STATE AID ENGINEER

I HEREBY CERTIFY THAT THE FINAL FIELD REVISIONS, IF ANY, OF THIS PLAN WERE MADE BY ME OR UNDER MY DIRECT SUPERVISION AND THAT I AM A DULY REGISTERED PROFESSIONAL ENGINEER UNDER THE LAWS OF THE STATE OF MINNESOTA.

DATE _____ REG. NO. _____

**RECORD PLAN
MARCH 2002**



1326 ENERGY PARK DRIVE
ST. PAUL, MINNESOTA 55108
(612) 644-4389
Howard R. Green Company
CONSULTING ENGINEERS

PLAN SYMBOLS

SECTION LINE	---	TREES	⊙
QUARTER LINE	- - - -	BRUSH OR SHRUBS	⊙
SIXTEENTH LINE	- - - - -	HEDGE	⊙⊙⊙⊙
RIGHT OF WAY	=====	CONIFERS	✱
LOT LINE	=====	SWAMP	⬆
CENTER LINE	-----	MAILBOX	⊞
FENCE LINE	-x-x-	SIGN	⊞
RIVER OR CREEK	~~~~~		
LAKE OR POND	⊖		
CULVERT	— —		
BRIDGE	— — —		
RETAINING WALL	— — —		

UTILITIES SYMBOLS

SANITARY SEWER	⊙	HYDRANT	⊙
STORM SEWER	⊖	25 mm WATER SERVICE	⊞
WATERMAIN	— —	POWER OR TELEPHONE POLE	⊞
GAS LINE	—G—G—	LIGHT POLE	⊞
POWER LINE	—O—O—	ANCHOR	— —
MANHOLE	⊙	SOIL BORING	⊞
CATCH BASIN	⊖		
VALVE	⊙		

S.P. 71-613-08 (C.S.A.H. NO.13)
PRESENT ADT (1999) 4,600 PROJ. ADT (2019) 19,200
FUNCTIONAL CLASSIFICATION HIGH DENSITY COLLECTOR
STA. 1+020 TO 1+915
NO. OF TRAFFIC LANES 2 SHOULDER WIDTH 3.05 m
PAVEMENT DESIGN: N/A t
SOIL FACTOR N/A PROJ. HCA DT (2019) N/A
OR
R-VALUE N/A ESAL FACTOR N/A
DESIGN SPEED 90 km/h
DESIGN SPEED NOT ACHIEVED AT:
STA. N/A TO STA. N/A (km/h _____)
STOPPING SIGHT DISTANCE BASED ON:
1070 mm HEIGHT OF EYE
150 mm HEIGHT OF OBJECT

S.P. 204-020-03 (TYLER STREET NORTH OF C.S.A.H. NO.12)
PRESENT ADT (1999) 4,600 PROJ. ADT (2019) 19,200
FUNCTIONAL CLASSIFICATION HIGH DENSITY COLLECTOR
STA. 0+000 TO 1+020
NO. OF TRAFFIC LANES 4 NO. OF PARKING LANES 0
PAVEMENT DESIGN: 9.1 t
SOIL FACTOR N/A PROJ. HCA DT (2019) N/A
OR
R-VALUE 50 ESAL FACTOR 2 013 000
DESIGN SPEED 60 km/h
DESIGN SPEED NOT ACHIEVED AT:
STA. N/A TO STA. N/A (km/h _____)
STOPPING SIGHT DISTANCE BASED ON:
1070 mm HEIGHT OF EYE
150 mm HEIGHT OF OBJECT

S.P. 204-133-01 (TYLER STREET SOUTH OF C.S.A.H. NO.12)
PRESENT ADT (1999) 2000 PROJ. ADT (2019) 19,200
FUNCTIONAL CLASSIFICATION HIGH DENSITY COLLECTOR
STA. 0+000 TO 2+860
NO. OF TRAFFIC LANES 4 NO. OF PARKING LANES 0
PAVEMENT DESIGN: 9.1 t
SOIL FACTOR N/A PROJ. HCA DT (2019) N/A
OR
R-VALUE 50 ESAL FACTOR 2 013 000
DESIGN SPEED 60 km/h
DESIGN SPEED NOT ACHIEVED AT:
STA. N/A TO STA. N/A (km/h _____)
STOPPING SIGHT DISTANCE BASED ON:
1070 mm HEIGHT OF EYE
150 mm HEIGHT OF OBJECT

S.P. 204-132-03 (171ST AVENUE) (STREET LIGHTING)
PRESENT ADT (1999) N/A PROJ. ADT (2019) N/A
FUNCTIONAL CLASSIFICATION HIGH DENSITY COLLECTOR
STA. 2+560 TO 2+978
NO. OF TRAFFIC LANES 4 NO. OF PARKING LANES 0
PAVEMENT DESIGN: N/A TON
SOIL FACTOR N/A PROJ. HCA DT (2019) N/A
OR
R-VALUE N/A ESAL FACTOR N/A
DESIGN SPEED N/A km/h
DESIGN SPEED NOT ACHIEVED AT:
STA. N/A TO STA. N/A (km/h _____)
STOPPING SIGHT DISTANCE BASED ON:
1070 mm HEIGHT OF EYE
150 mm HEIGHT OF OBJECT

THE 1995 EDITION OF THE MINNESOTA DEPARTMENT OF TRANSPORTATION "STANDARD SPECIFICATION FOR CONSTRUCTION" SHALL GOVERN

DRAWING NUMBER EASTE 01