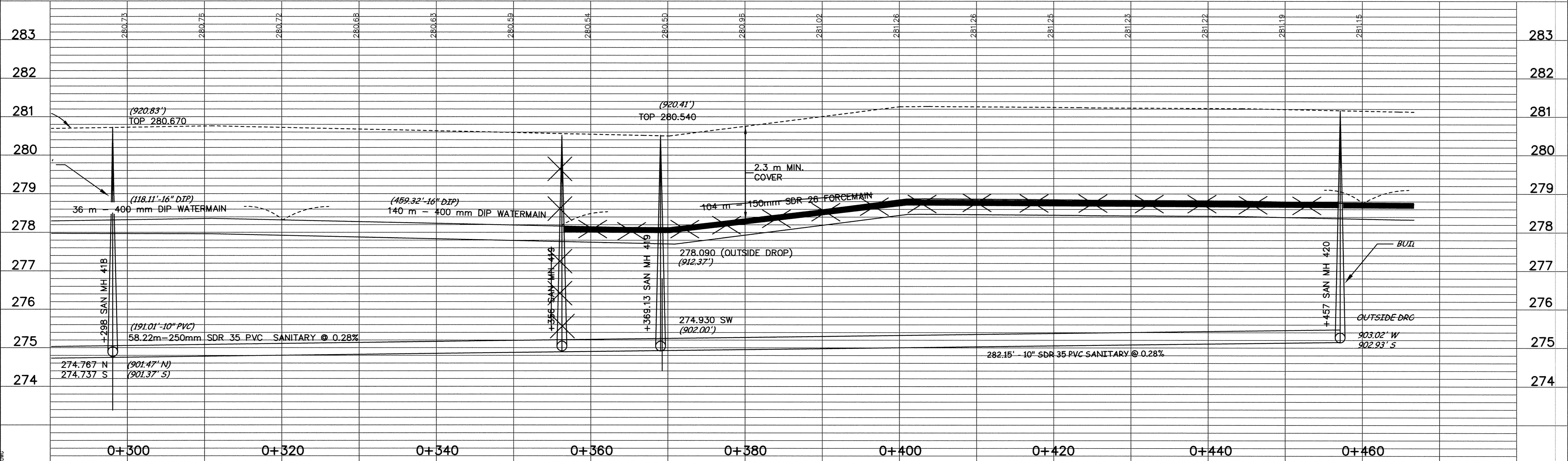
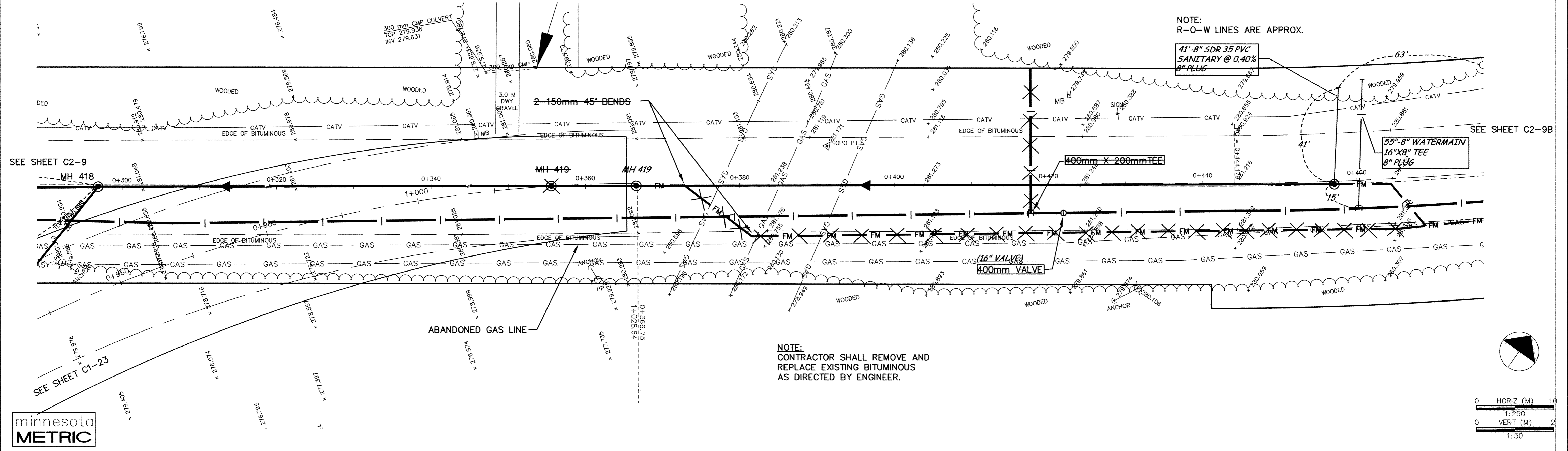


C.S.A.H. NO.13



DESIGNED BY: _____ JOB DATE: MARCH 1998	I HEREBY CERTIFY THAT THIS PLAN, SPECIFICATION, OR REPORT WAS PREPARED BY ME OR UNDER MY DIRECT SUPERVISION AND THAT I AM A DULY REGISTERED PROFESSIONAL ENGINEER UNDER THE LAWS OF THE STATE OF MINNESOTA.	NO. DATE BY REVISION DESCRIPTION	1326 ENERGY PARK DRIVE ST. PAUL, MINNESOTA 55108 (612) 644-4389	CITY OF ELK RIVER EASTERN AREA PHASE I IMPROVEMENTS	WATERMAIN IMPROVEMENTS CSAH 13 BETWEEN 5TH AND TYLER	SHEET NO. C2-9A
DRAWN BY: _____ JOB NUMBER: 800110J		1 1-25-99 PH REVISED SANITARY SEWER C.O. NO.1				
APPROVED: _____ CAD DATE: AUGUST 1998						
CAD FILE: March 28, 2001 4:30:50 p.m. 800110J\AS-BUILTS\AS_BALDWIN-5TH\AS13A.DWG						

DATE: _____ REG. NO.: 15316

Howard R. Green Company
CONSULTING ENGINEERS

1326 ENERGY PARK DRIVE
ST. PAUL, MINNESOTA 55108
(612) 644-4389

CITY OF ELK RIVER
EASTERN AREA
PHASE I IMPROVEMENTS

WATERMAIN IMPROVEMENTS
CSAH 13 BETWEEN 5TH AND TYLER

SHEET NO.
C2-9A

0+300 TO 0+460

DRAWING NUMBER EAST E. 1.98

DRAWING NUMBER 93

DRAWING NUMBER 98

DRAWING NUMBER EAST E. 1.98

DRAWING NUMBER 93

DRAWING NUMBER 98

DRAWING NUMBER EAST E. 1.98

DRAWING NUMBER 93

DRAWING NUMBER 98

DRAWING NUMBER EAST E. 1.98

DRAWING NUMBER 93

DRAWING NUMBER 98

DRAWING NUMBER EAST E. 1.98

DRAWING NUMBER 93

DRAWING NUMBER 98

DRAWING NUMBER EAST E. 1.98

DRAWING NUMBER 93

DRAWING NUMBER 98

DRAWING NUMBER EAST E. 1.98

DRAWING NUMBER 93

DRAWING NUMBER 98

DRAWING NUMBER EAST E. 1.98

DRAWING NUMBER 93

DRAWING NUMBER 98

DRAWING NUMBER EAST E. 1.98

DRAWING NUMBER 93

DRAWING NUMBER 98

DRAWING NUMBER EAST E. 1.98

DRAWING NUMBER 93

DRAWING NUMBER 98