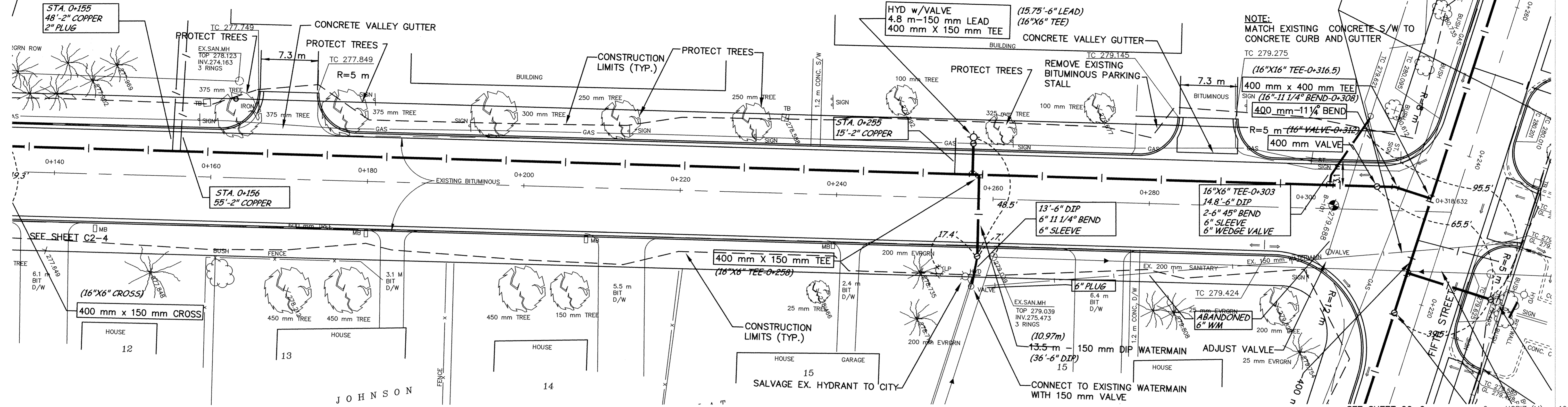
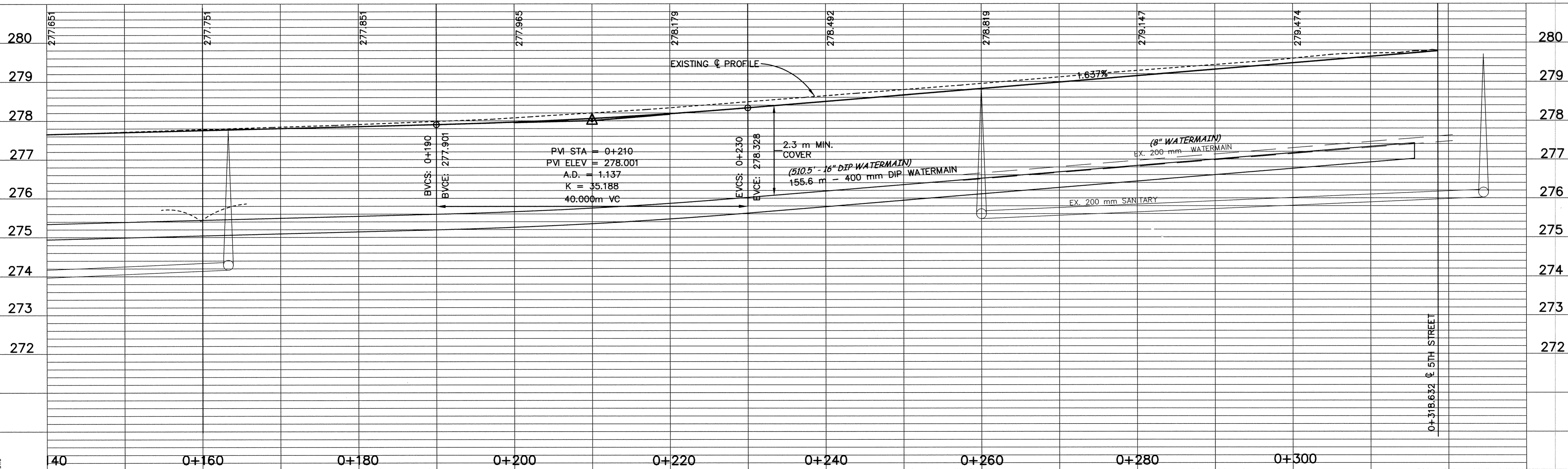
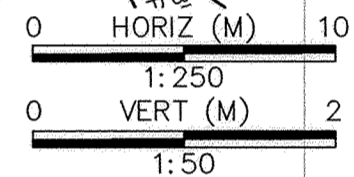


BALDWIN AVENUE

SEE SHEET C2-6



minnesota
METRIC



DESIGNED BY: _____ JOB DATE: MARCH 1998
 DRAWN BY: *mgj* JOB NUMBER: 800110J
 APPROVED: _____ CAD DATE: MARCH 1998
 CAD FILE: March 26, 2001 9:53:08 a.m.
 800110J\AS-BUILTS\AS_BALDWIN-5TH_BASE\AS03.DWG

I HEREBY CERTIFY THAT THIS PLAN, SPECIFICATION,
 OR REPORT WAS PREPARED BY ME OR UNDER MY DIRECT
 SUPERVISION AND THAT I AM A DULY REGISTERED
 PROFESSIONAL ENGINEER UNDER THE LAWS OF THE
 STATE OF MINNESOTA.
 DATE 10/15/98 REG. NO. 15316

NO.	DATE	BY	REVISION DESCRIPTION



Howard R. Green Company
 CONSULTING ENGINEERS

1326 ENERGY PARK DRIVE
 ST. PAUL, MINNESOTA 55108
 (612) 644-4389

CITY OF ELK RIVER
 EASTERN AREA
 PHASE I IMPROVEMENTS

STREET AND WATERMAIN IMPROVEMENTS
 BALDWIN AVENUE

0+160 TO 0+318.632

SHEET NO.
C2-5

DRAWING NUMBER EAST 1998 88
 S&C/D PRODUCTS • NEW HOPE, MINNESOTA
 REVISIONS BY PART NUMBER 0502
 S&C/D PRODUCTS • NEW HOPE, MINNESOTA
 REVISIONS BY PART NUMBER 0502
 S&C/D PRODUCTS • NEW HOPE, MINNESOTA
 REVISIONS BY PART NUMBER 0502
 S&C/D PRODUCTS • NEW HOPE, MINNESOTA
 REVISIONS BY PART NUMBER 0502