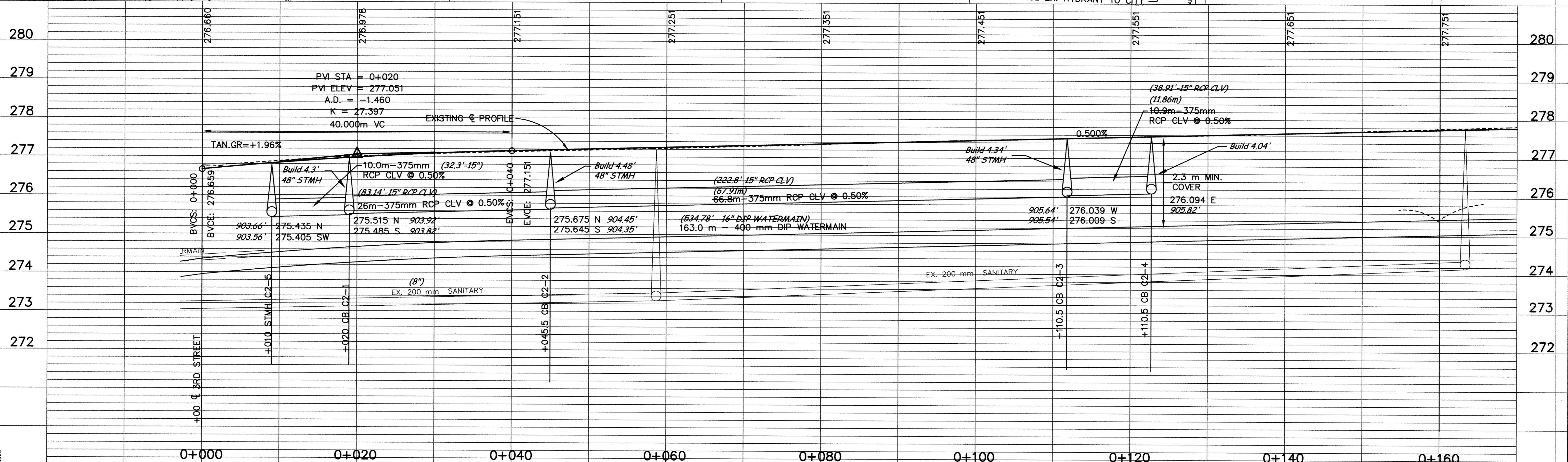
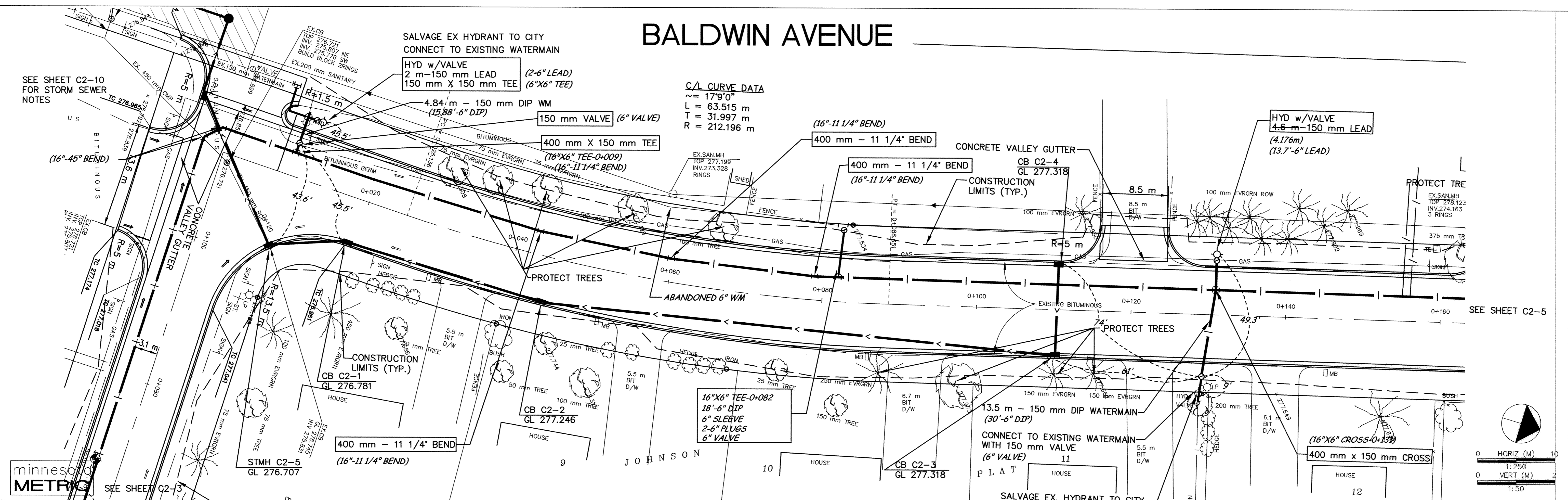


BALDWIN AVENUE



DESIGNED BY: _____ JOB DATE: MARCH 1998
 DRAWN BY: _____ JOB NUMBER 800110J
 APPROVED: _____ CAD DATE: MARCH 1998
 CAD FILE: March 26, 2001 2:53:15 p.m.
 800110J\AS-BUILTS\AS_BALDWIN-STH_BASE\AS02.DWG

I HEREBY CERTIFY THAT THIS PLAN, SPECIFICATION, OR REPORT WAS PREPARED BY ME OR UNDER MY DIRECT SUPERVISION AND THAT I AM A DULY REGISTERED PROFESSIONAL ENGINEER UNDER THE LAWS OF THE STATE OF MINNESOTA.
 DATE 10/15/98 REG. NO. 15316

NO.	DATE	BY	REVISION DESCRIPTION

1326 ENERGY PARK DRIVE
 ST. PAUL, MINNESOTA 55108
 (612) 644-4389
Howard R. Green Company
 CONSULTING ENGINEERS

CITY OF ELK RIVER
 EASTERN AREA
 PHASE I IMPROVEMENTS

STREET AND WATERMAIN IMPROVEMENTS
 BALDWIN AVENUE
 0+000 TO 0+160

SHEET NO.
C2-4

DRAWING NUMBER EAST1E198

SAFCO PRODUCTS • NEW HOPE, MINNESOTA
 REQUESTER BY PART NUMBER 8552
 REVISION BY PART NUMBER 8552