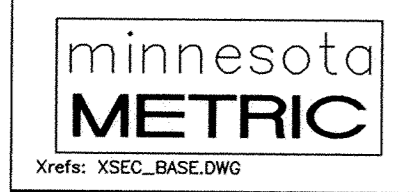
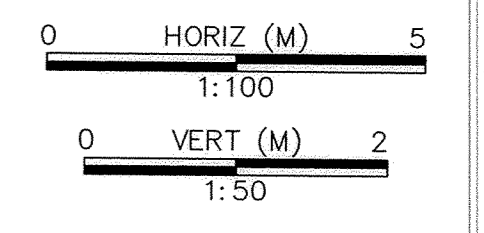
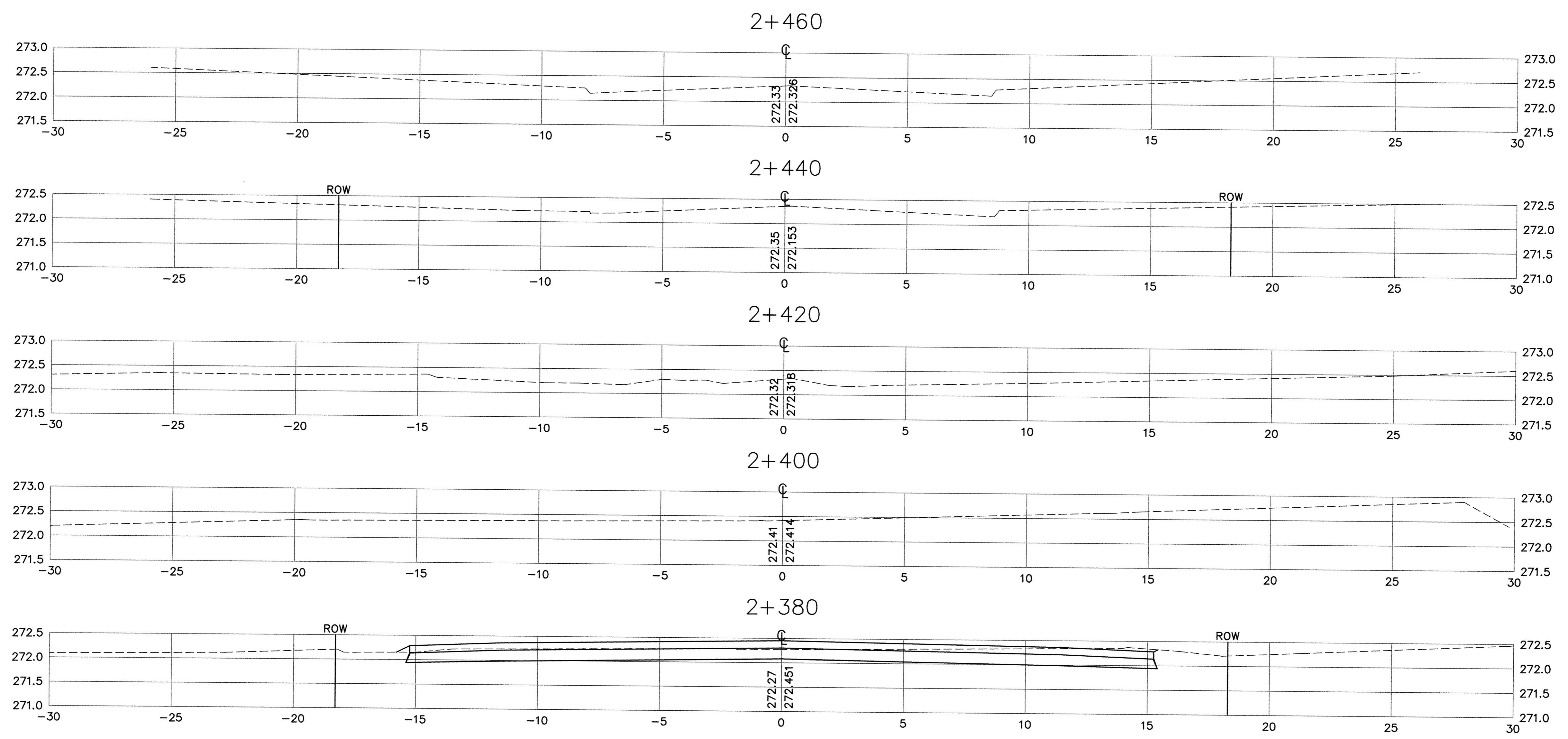


SARCO PRODUCTS • NEW HUBE, MINNESOTA  
 REPRODUCED BY PART NUMBER 6532  
 PRODUCTION NUMBER OF PART 0013031001



DESIGNED BY: AB    DRAWN BY: *ajg*  
 APPROVED: ---    JOB NUMBER 800110J  
 CAD DATE: October 09, 1998 9:58:52 a.m.  
 CAD FILE: 800110j\Draws\Tyler\_BASE\X31.DWG

I HEREBY CERTIFY THAT THIS PLAN, SPECIFICATION,  
 OR REPORT WAS PREPARED BY ME OR UNDER MY DIRECT  
 SUPERVISION AND THAT I AM A DULY REGISTERED  
 PROFESSIONAL ENGINEER UNDER THE LAWS OF THE  
 STATE OF MINNESOTA.  
 DATE 10/15/98    REG. NO. 15316

NO.	DATE	BY	REVISION DESCRIPTION



1326 ENERGY PARK DRIVE  
 ST. PAUL, MINNESOTA 55108  
 (612) 644-4389  
**Howard R. Green Company**  
 CONSULTING ENGINEERS

CITY OF ELK RIVER  
 EASTERN AREA  
 PHASE I IMPROVEMENTS

STREET AND UTILITY IMPROVEMENTS  
 CROSS SECTIONS  
 TYLER STREET    2+380 TO 2+460

SHEET NO.  
**C1-31X**