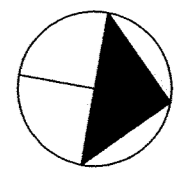
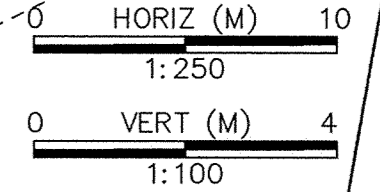


STREET CONSTRUCTION LIMITS (TYP.)

TYLER STREET

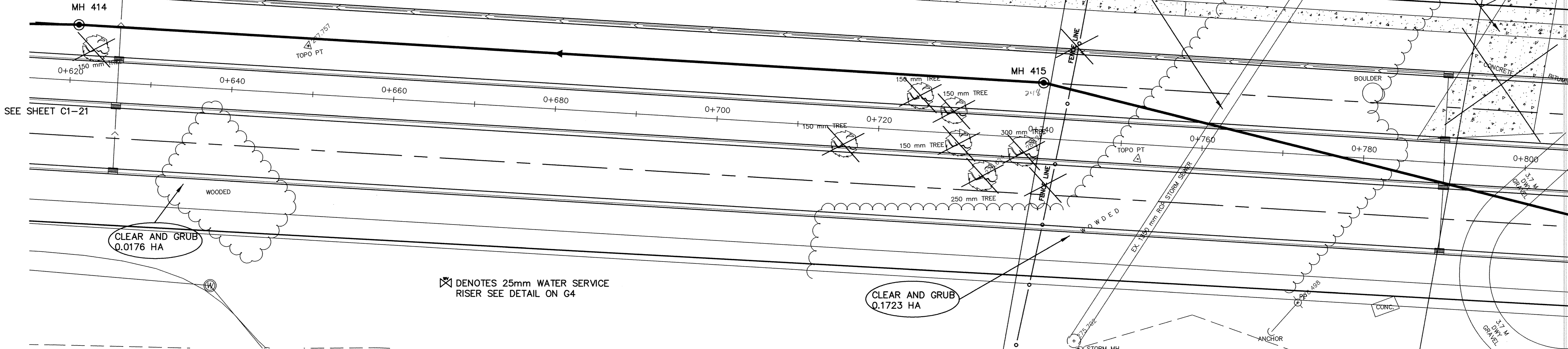
CONTRACTOR SHALL REMOVE AND REINSTALL EXISTING STORM SEWER AS NECESSARY (INCIDENTAL)

CONCRETE TO BE REMOVED BY OTHERS



SEE SHEET C1-21

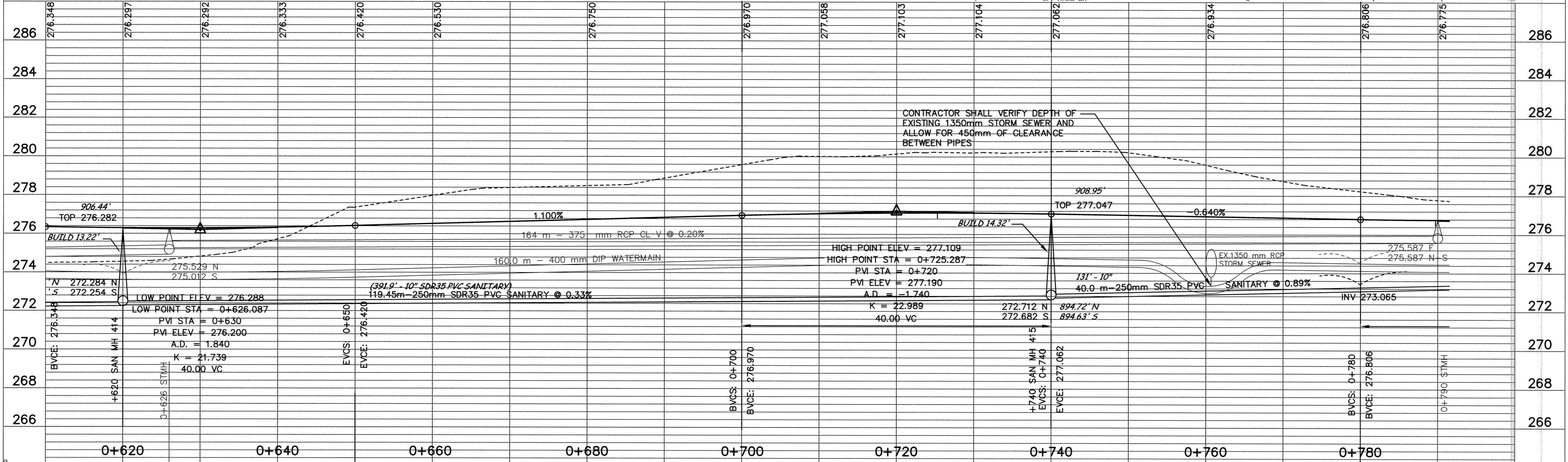
SEE SHEET C1-23



⊗ DENOTES 25mm WATER SERVICE RISER SEE DETAIL ON G4

CLEAR AND GRUB 0.1723 HA

CLEAR AND GRUB 0.0176 HA



CONTRACTOR SHALL VERIFY DEPTH OF EXISTING 1350mm STORM SEWER AND ALLOW FOR 450mm OF CLEARANCE BETWEEN PIPES

DESIGNED BY: AB JOB DATE: MARCH 1998
 DRAWN BY: [Signature] JOB NUMBER: 800110J
 APPROVED: [Signature] CAD DATE:
 CAD FILE: September 16, 1999 11:37:37 a.m.
 800110\Draws\NORTH_TYLER_05.DWG

I HEREBY CERTIFY THAT THIS PLAN, SPECIFICATION, OR REPORT WAS PREPARED BY ME OR UNDER MY DIRECT SUPERVISION AND THAT I AM A DULY REGISTERED PROFESSIONAL ENGINEER UNDER THE LAWS OF THE STATE OF MINNESOTA.
 DATE: _____ REG. NO. 15316

| NO. | DATE | BY | REVISION DESCRIPTION |
|-----|---------|----|--|
| 1 | 1-22-99 | PH | DELETED WM C.O. NO.1 |
| 2 | 9-16-99 | RM | REVISE SANITARY SEWER REVISE SANITARY ALIGNMENT |

1326 ENERGY PARK DRIVE
 ST. PAUL, MINNESOTA 55108
 (612) 644-4389
Howard R. Green Company
 CONSULTING ENGINEERS

CITY OF ELK RIVER
 EASTERN AREA
 PHASE I IMPROVEMENTS

STREET AND UTILITY IMPROVEMENTS
 TYLER STREET
 0+620 TO 0+780

SHEET NO.
C1-22