

☒ DENOTES 25mm WATER SERVICE RISER SEE DETAIL ON G4

STREET CONSTRUCTION LIMITS (TYP.)

NOTE:  
CONTRACTOR SHALL VERIFY LOCATION OF EXISTING GAS LINES PRIOR TO SANITARY SEWER CONSTRUCTION

# TYLER STREET

(8" PLUG) 200mm PLUG x 271.2  
(INV. 891.78) INV. 271.816

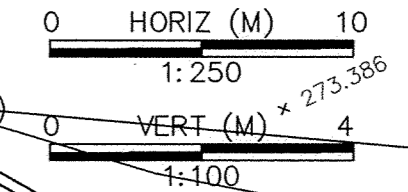
(37.7'-8" SDR35 PVC)

11.5m-200mm SDR35 PVC  
SANITARY @ 0.40%

MH 412

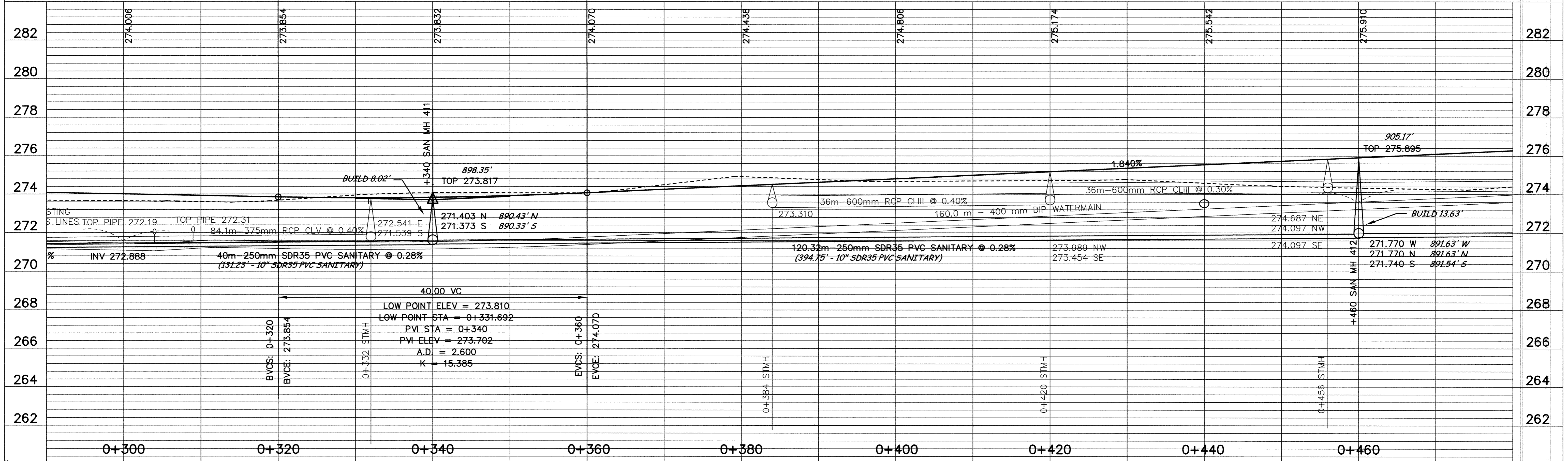
MH 411

CLEAR AND GRUB  
0.4420 HA



SEE SHEET C1-19

SEE SHEET C1-21



DESIGNED BY: AB JOB DATE: MARCH 1998  
 DRAWN BY: [Signature] JOB NUMBER: 800110J  
 APPROVED: [Signature] CAD DATE:  
 CAD FILE: February 08, 1999 11:28:34 a.m.  
 800110J\Drawg\NORTH\_TYLER\03.DWG

I HEREBY CERTIFY THAT THIS PLAN, SPECIFICATION, OR REPORT WAS PREPARED BY ME OR UNDER MY DIRECT SUPERVISION AND THAT I AM A DULY REGISTERED PROFESSIONAL ENGINEER UNDER THE LAWS OF THE STATE OF MINNESOTA.  
 DATE: \_\_\_\_\_ REG. NO.: 15316

NO.	DATE	BY	REVISION DESCRIPTION
1	1-22-99	PH	DELETED WM C.O. NO.1
1	1-22-99	PH	DELETED MH 412A

1326 ENERGY PARK DRIVE  
 ST. PAUL, MINNESOTA 55108  
 (612) 644-4389  
  
**Howard R. Green Company**  
 CONSULTING ENGINEERS

CITY OF ELK RIVER  
 EASTERN AREA  
 PHASE I IMPROVEMENTS

STREET AND UTILITY IMPROVEMENTS  
 TYLER STREET  
 0+300 TO 0+460

SHEET NO.  
**C1-20**