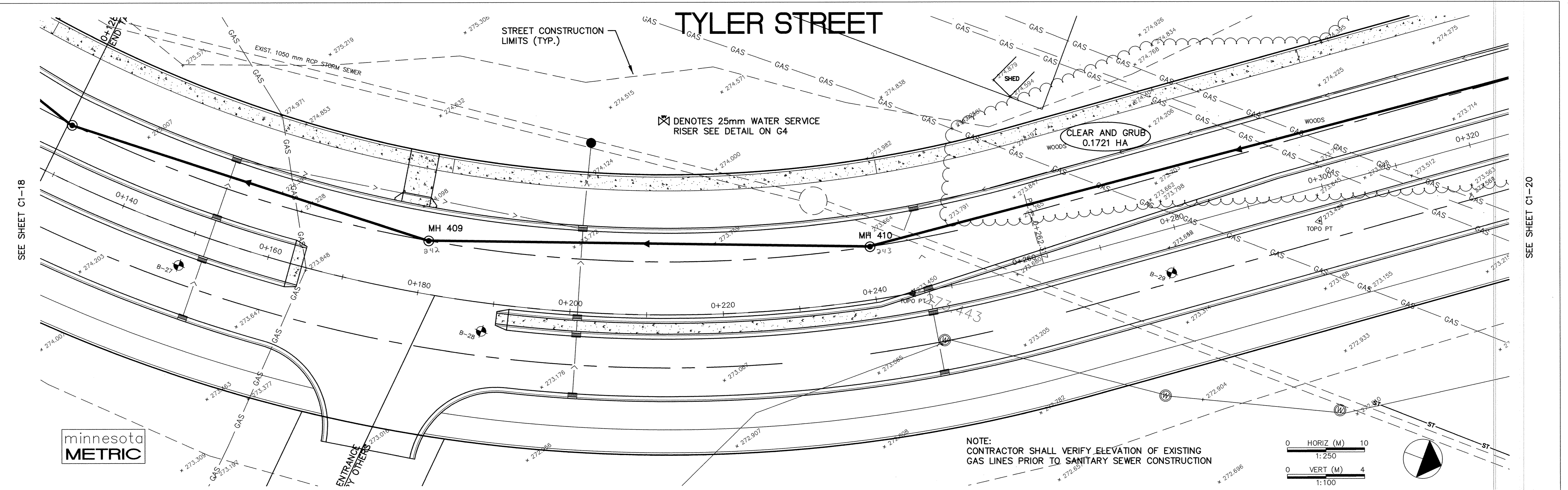


COI PRODUCTS • NEW HURON, MINNESOTA
 PRODUCED BY PART NUMBER 6522
 SHIELD PRODUCTS • NEW HURON, MINNESOTA
 PRODUCED BY PART NUMBER 6522
 SHIELD PRODUCTS • NEW HURON, MINNESOTA
 PRODUCED BY PART NUMBER 6522




282	275.222	275.070	274.918	274.766	274.614	274.462	274.310	274.158	274.006	282
280										280
278										278
276	903.15' OP 275.281		901.91' TOP 274.903			900.42' TOP 274.447				276
274			45.9m-375mm RCP CLV @ 0.50%			Build 11.10'				274
272	270.735 N 270.705 S	273.780 N 273.862 E	270.902 E 290.902 E	270.902 N 270.872 S	271.093 N 271.063 S	160.0 m - 400 mm DIP WATERMAIN 84.1m-375mm RCP CLV @ 0.40%		EXISTING GAS LINES TOP PIPE 272.19 TOI		272
270	(160'-10" SDR35 PVC SANITARY) 48.77m-250mm SDR35 PVC SANITARY @ 0.28%		(188.6'-10" SDR35 PVC SANITARY) 57.50m-250mm SDR35 PVC SANITARY @ 0.28%			EXIST. 1050 mm RCP STORM SEWER	60m-250mm SDR35 PVC SANITARY @ 0.28% (196.9'-10" SDR35 PVC SANITARY)	INV 272.888		270
268			EXIST. 1050 mm RCP STORM SEWER		273.489 E 273.550 S 269.838 N-W	43.1m-1050mm RCP CLV @ 0.28%	EXIST. 1050 mm RCP STORM SEWER			268
266										266
264										264
262										262
	0+140	0+160	0+180	0+200	0+220	0+240	0+260	0+280	0+300	

DESIGNED BY: AB JOB DATE: MARCH 1998
 DRAWN BY: [Signature] JOB NUMBER: 800110J
 APPROVED: [Signature] CAD DATE:
 CAD FILE: February 08, 1999 11:25:26 a.m.
 800110\Draws\NORTH_TYLER\02.DWG

I HEREBY CERTIFY THAT THIS PLAN, SPECIFICATION,
 OR REPORT WAS PREPARED BY ME OR UNDER MY DIRECT
 SUPERVISION AND THAT I AM A DULY REGISTERED
 PROFESSIONAL ENGINEER UNDER THE LAWS OF THE
 STATE OF MINNESOTA.
 DATE: _____ REG. NO.: 15316

NO.	DATE	BY	REVISION DESCRIPTION
1	1-21-99	PH	DELETED WM C.O. NO.1


Howard R. Green Company
 CONSULTING ENGINEERS
 1326 ENERGY PARK DRIVE
 ST. PAUL, MINNESOTA 55108
 (612) 644-4389

CITY OF ELK RIVER
 EASTERN AREA
 PHASE I IMPROVEMENTS

STREET AND UTILITY IMPROVEMENTS
TYLER STREET
 0+140 TO 0+300

SHEET NO.
C1-19